

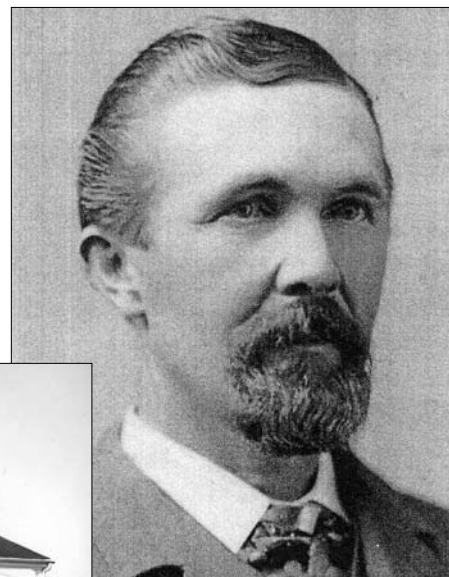
Shoreline

Contents...

- 4 *Bordeleau – ‘A Fantastic Day’*
- 6 *Spotlight on Collections*
- 7 *Memoirs of a Farmhouse*
- 11 . . . *A New Home for an Old House: The French House*
- 12 . . . *Glossary of Federal and Victorian Vernacular
Architecture in Historic Whitehaven*
- 17 . . . *Seaford’s Gubernatorial Mansion*
- 19 . . . *Two and One Half Miles in 300 Years*
- 21 . . . *Rackliffe House*
- 24 . . . *The 19th Century American Letter as Literature*
- 26 . . . *A Tough Man Markets Tender Chickens*
- 28 . . . *Read All About It: Newspapers as Mirrors of Local History*
- 30 . . . *Amy Pritchett Anderson Waddelow Fooks*
- 32 . . . *News, Events and Exhibits*
- 34 . . . *Volunteer Corner*



4
Bordeleau – ‘A Fantastic Day’



24
The 19th Century American
Letter as Literature



7
Memoirs of a Farm House

Volume 17 No. 6 June/July 2010

Director and Founder, Dr. G. Ray Thompson. *Archivist*, David Ranzan. *Research Assistant*, T. Aaron Horner. *Office Manager*, Donna T. Messick. *Receptionist*, Denise Horner. *Assistant*, Heather Burnham. *Archival Assistant*, Julie Messick. *Graduate Assistant*, Matthew Hollis.

This issue and back issues of the *Shoreline* may be purchased for \$15 each. Please contact us at 410-543-6312 or by e-mail at redhac@salisbury.edu for details. ©2010 Edward H. Nabb Research Center for Delmarva History and Culture at Salisbury University. All rights reserved. Reproduction in whole or in part without permission is prohibited. Any views or opinions expressed in this newsletter are solely those of the individual authors and do not represent those of the Nabb Center or Salisbury University. *Shoreline* is published by the Nabb Research Center, 1101 Camden Ave., Salisbury University, MD, 21801. Printed in the USA by the Publications Office, Salisbury University, Salisbury, MD.

About the Front Cover:

The photograph is of the grounds of Bordeleau Winery as it overlooks Wicomico Creek, in Wicomico County, Maryland. It was taken in May, during our 2010 fundraiser.