



# Shoreline

Vol. 10, Issue 12, December 2003



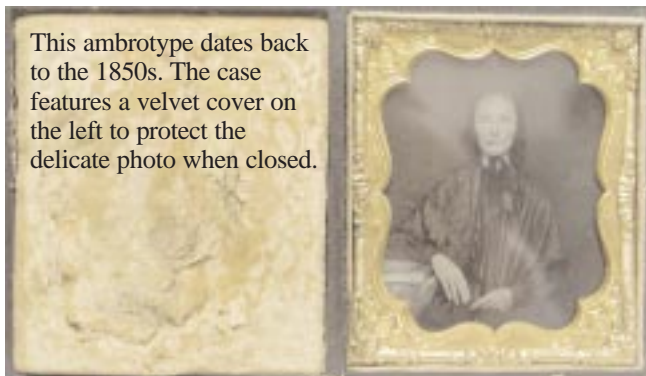
## Spotlight on Collections

The Nabb Center would like to share items from the Wicomico County Free Library collection of historical photographs from the 1950s. This collection is a unique ensemble of pictures that give a sense of Christmas holiday celebrations in downtown Salisbury. The photos show the beautiful adornments lighting up the town. Carvings of choir children can be seen on the balcony of the Wicomico County Courthouse and the nutcracker toy soldiers can be also be seen “guarding” the entrance to the Courthouse plaza. Santa Claus takes center stage as the people of the community hustle and bustle around him through the streets. Another favorite from the collection is the image of a young boy and girl sharing a holiday wreath while posing for the camera. These types of memories warm our hearts and help us to get in the mood for our own winter celebrations, which are right around the corner.



## Ambrotype Update

In the July 2003 *Shoreline*, we highlighted a donation by Elizabeth Short Cissel of Baltimore, a cased ambrotype. We incorrectly labeled the woman in the image as Isabella Ann Twilley. James Trader, great grandson of Twilley, informed us of our error and led us to more information on Anne Isabelle Twilley. Twilley was the daughter of a well-to-do family in the Rewastico Creek Mill area of then Somerset, but currently Wicomico County. In 1841 she married George Jackson Porter. They eventually settled in the Allen area. Check out *Genealogy of George & Elizabeth Porter* compiled by Wade T. Porter for more details about Twilley and her descendants. Thank you Mr. Trader for once again leading us to more accurate information about our collections.



This ambrotype dates back to the 1850s. The case features a velvet cover on the left to protect the delicate photo when closed.

## A Lower Delmarva Farmstead Circa 1800

Step back in time with this detailed depiction of life on Delmarva. Artist and Nabb Board member Richard B. Carter donated prints of this limited edition sketch to the Nabb Research Center. Due to the accuracy of the scene portrayed, Dr. Ray Thompson has even used it in his graduate research class. We are pleased to offer it for sale to our patrons. The black and white print is 17 1/2" x 18 1/2". Available for \$15, plus \$5 postage fee, it makes a unique gift for the upcoming holidays.



# Salisbury

UNIVERSITY  
Nabb Research Center for Delmarva History and Culture  
1101 Camden Avenue  
Salisbury, MD 21801-6861  
410-543-6312  
E-mail: [redhac@salisbury.edu](mailto:redhac@salisbury.edu)

non-profit org.  
U. S. postage  
PAID  
Salisbury, Maryland  
permit no. 65



## African-American Family History Workshop Saturday, January 17, 2004

Join Dr. Clara Small of Salisbury University in researching African-American family roots in the Delmarva region. Small will help the researcher navigate the roadblocks and the unique problems historians face when exploring African-American family histories and the special issues that are intimately connected to them.



The workshop will be from 9 a.m.-3 p.m. located in the Nabb Research Center on SU's East Campus. Time will be allotted for lunch. The price is \$40; Nabb members and SU students will receive a \$5 discount. A research methods handbook will be provided. For reservations and directions please contact Jeri Hurley (410-677-5404) or Carol Brady (410-548-4481) at the Center for Professional Development. For program information go to the calendar page of the Nabb Web site (<http://nabbhistory.salisbury.edu>).

## Family Genealogy Workshop Saturday, February 7, 2004

Dr. Ray Thompson of Salisbury University will present a workshop on the genealogical research of Delmarva families. Thompson will tell of the significance of oral history and the intricacies involved in deciphering Colonial handwriting and jargon. He will demonstrate how to use the best sources available in a "hands-on" manner and will also provide a handbook on research methods and sources.



The workshop will be an all-day event from 9 a.m.-3 p.m. with a break for lunch. It will be held at the Nabb Research Center; the price is \$40; Nabb members and SU students will receive a \$5 discount. For more information and to reserve a seat contact the center at 410-543-6312 or visit <http://nabbhistory@salisbury.edu>.



### Remembering

*The Nabb Center remembers the late Alfred V. Melson Sr. who passed away October 2. Al was a trusted board member and friend to the Center. He will be dearly missed by the Delmarva community.*



### Closings

The Nabb Center will be closed for winter break December 15-January 1. Enjoy the holidays!

*Photo courtesy of C. Robert Withey Collection*

### Architecture at Arlington On Display

The Arlington Foundation has given the Nabb Center an extension on the archaeological exhibit until spring. Come experience the uncovered historical artifacts and learn about the history of the people behind its construction.