



# Shoreline

Vol. 9, Issue 5, May 2002

## Pathways, Boundaries and Markers on Display at Nabb Research Center

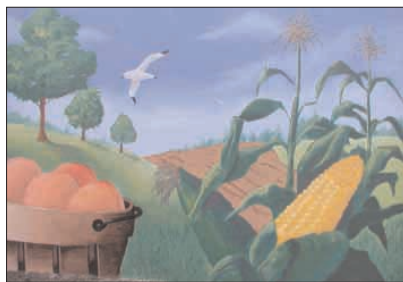
A celebration of the history of mapmaking and surveying will be exhibited at the Nabb Research Center through September 1, 2002. The display showcases a collection of maps and renderings that demonstrate the changing boundaries of the Chesapeake region from Augustine Hermann's early map to Mason and Dixon in the eighteenth century to today's aerial photography. Among the featured items are a set of eighteenth century surveyor's tools with a hand-carved ivory ruler and a beautiful hand-drawn plat map of Salisbury's Tony Tank subdivision done by local surveyor and historian, Richard Cooper. On Thursday, **May 16, 2002** at 2 p.m., the Nabb Research Center will host an open house to celebrate the display. The event will be highlighted by a presentation from SU Geography and Geosciences Professor M.E. Folkhoff. Folkhoff's talk, "Surveying the Past Today: Using a Theodolite to Crack a Walnut + or - Five Acres," will explore the challenges faced by today's geographers as they attempt to reveal the true land tenure system of the Lower Shore. Overlaying past property boundaries on modern maps seems impossible when today's computer technology demands precision never foreseen by early mapmakers. This multidisciplinary topic will be of interest to historians, geographers, archaeologists and surveyors alike. The event is free and open to the public.



Nabb Research Center graduate assistant Pamela Collins drew this beautiful Chesapeake map in oil pastels. The map shows the Mason-Dixon line and other important pathways, boundaries and markers.

## Heritage Mural on Display

In May 2000, Nabb Research Center graduate assistant Pamela Collins spearheaded the design and construction of a 494' x 8' wooden mural fence that now encompasses the Henson Hall construction site. Known as the SU Heritage Mural, this fence illustrates a chronological narration of SU's past, present and hopes for the future. To underscore the importance of this collaboration of history and art, the Nabb Research Center is co-sponsoring the SU Heritage Mural exhibit in the Guerrieri Center Atrium Gallery. The exhibit will showcase the time, talent and people who made this ambitious project a reality and will be on display from May 31 through June 14. Call the Nabb Research Center for more information and specific hours.



This panel of the Heritage Mural, titled "Peaches and Corn," focuses on the importance of Delmarva's agriculture history.



Due to the success of the Nabb Research Center's Sponsor-A-Book Program, the paperback books in the Center's Somerset County section will be sent offsite for hardback binding during the month of June. This includes almost all of the Somerset County paperbacks, such as, will, inventory, account and church record abstracts. We apologize for this inconvenience, but we believe this rebinding effort will greatly enhance the Nabb Research Center's library holdings. Please plan your research accordingly.

# Salisbury

UNIVERSITY

Nabb Research Center for Delmarva History and Culture  
1101 Camden Avenue  
Salisbury, MD 21801-6861  
410-543-6312  
E-mail: rcdhac@salisbury.edu

## 2002 Washburn Prize Winner Announced

The winner of this year's Wilcomb E. Washburn Student Prize in History is Katie Melissa Ross. The Wilcomb Washburn prize is a \$500 award made possible through an endowment created by the William H. Donner Foundation of New York in honor of the late Wilcomb E. Washburn, a distinguished historian of the Smithsonian Institution and resident of Somerset County, Maryland. Katie received her prize at the 2002 Honors Convocation.

A native of Churchville, Maryland, Katie is a SU junior and history major. Katie's winning paper, "Feminine Power and Widowhood, A Case Study of Parthenia Morris, Somerset County, Maryland," is an excellent essay which explores how women exercised power during the Colonial period of American history. Congratulations, Katie!



SU Junior Katie Ross is the winner of the Wilcomb Washburn Prize for 2002.

## Volunteers—Our Lifeline

The staff of the Nabb Research Center extends its sincere thanks to all of the volunteers who make the Center the outstanding resource that it is today. The endless time and talent of our volunteers has helped the Nabb Research Center move forward to make Delmarva's history and culture more accessible than ever. We especially thank Polly Batchelder, Faye Brooks, Judy Jaqueth, Ellaline Roy-Macaulay, Pat Taylor, Barbara Trader, Jane West, Lloyd and Lucy Whitehead who have so generously donated their time over the past year.

The Nabb Research Center is in the process of creating several databases that will facilitate historical research in a number of key areas. We are currently recruiting new volunteers to help us process and assemble information for these databases. If you would be comfortable working on a computer and doing data input from primary sources, please contact Director

Becky Miller for more information about volunteering at the Nabb Research Center.

*Thank You*