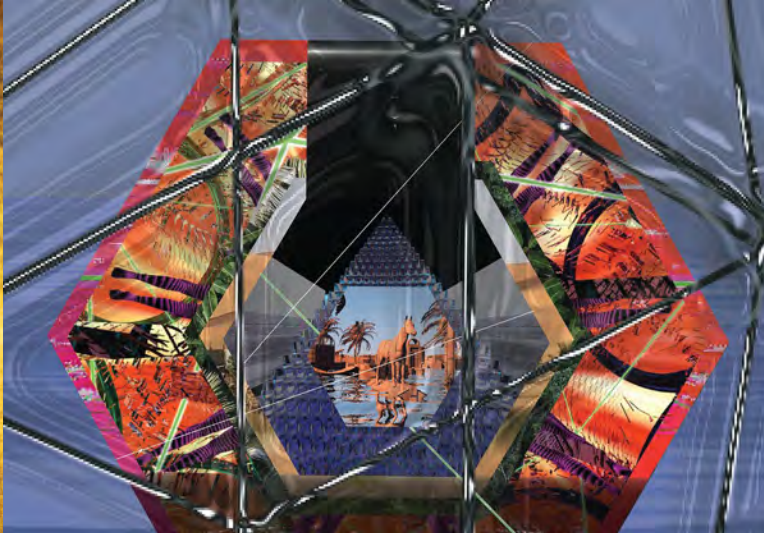


PANORAMA

Salisbury University's Guide to Cultural & Educational Events



LATINIDADES AND MORE

19 **OLAS: Building Bridges**
The Organization of Latin American Students celebrates more than 20 years of promoting Latin American cultures and communities

21 **Cassandro**
Gay amateur wrestler Saúl Armendáriz rises to international stardom after he creates the character "Cassandro" in this riveting film

7 **Furia Flamenca**
Experience the excitement and passion of flamenco music and dance

6 **Manuel Barrueco**
Legendary guitarist celebrates 50 years on stage

17 **Electric Liquid**
Through video projections, installation and sculpture, new media artist Johab Silva asks if we are ready to deal with a world shaped by water

26 **Heritage Celebrations**
Black History Month, International Women's Month, and Asian American and Pacific Islander Heritage



WELCOME

A MESSAGE FROM THE PRESIDENT

As we enter into the second half of the academic year, we continue to build off the excitement, discovery and artistic exploration of the fall.

Continuing with the year's cultural theme – Latinidades – our University dives deeper into the influence of Latin America and the impact those communities have made on our very own Eastern Shore. With page after page of exciting performances, artistic showcases and in-depth lectures, this issue of *Panorama* highlights a truly vibrant season of events at SU.

In step with the Latinidades theme, a truly unique experience this spring will be the salsa dance lessons led by the experts of rhythm and salsa dance duo Charlin and JonJon. Free and open to the public to attend, these lessons are for any skill level.

I am also incredibly excited by the return of Symphony 21 to our campus! Led by Salisbury native Daniel Bowen, Symphony 21 is a breathtaking display of classical instruments coupled with modern musical styles. Both educational and moving, Symphony 21 is an experience you won't want to miss.

February features our many celebrations of Black History Month. Filled with performances, lectures, film screenings and even dining experiences, SU explores and celebrates the meaningful cultural traditions of Black History Month. Developed and supported by SU's Office of Diversity and Inclusion and the Multicultural Alliance, these events take place all month long across our campus.

I couldn't be more excited to participate in these events this spring, and I look forward to seeing you throughout the year at one (or many) of our fantastic showcases!



Dr. Carolyn R. Lepre
President, Salisbury University



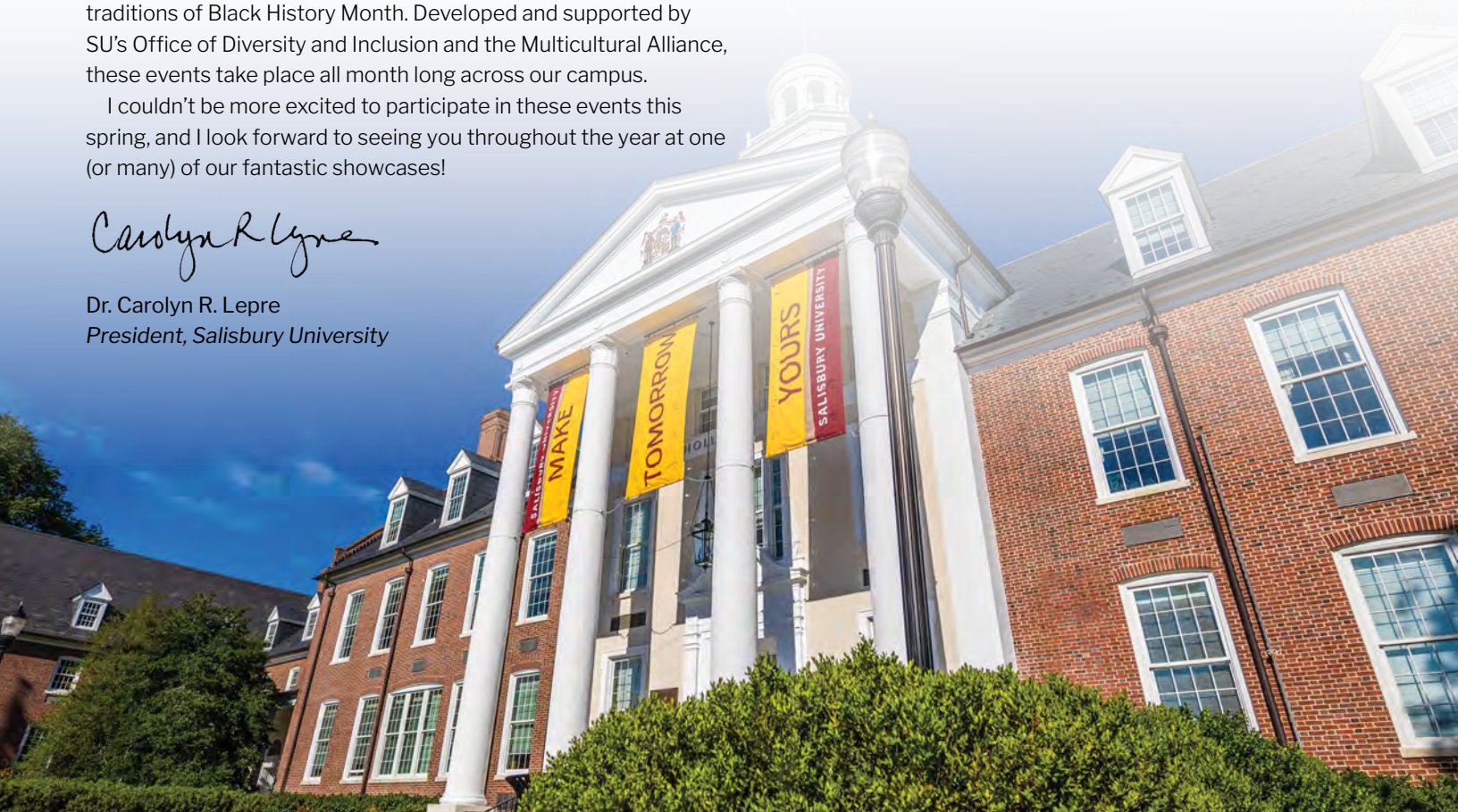
VISITORS ARE WELCOME

Salisbury University events are **open to the public** and we're excited to welcome you to our campus! **Please note that events in *Panorama* are subject to change**; to be sure you have the latest information before you come to campus for an event, visit the *Panorama* webpage and scroll to the Event Listings tab to double check dates, times and locations: salisbury.edu/panorama



ACCESSIBILITY

SU is an Equal Opportunity/AA/Title IX university and provides reasonable accommodation given sufficient notice to the University office or staff sponsoring the event or program. Each event listing includes contact information for the associated sponsor to arrange accommodations.



PARKING

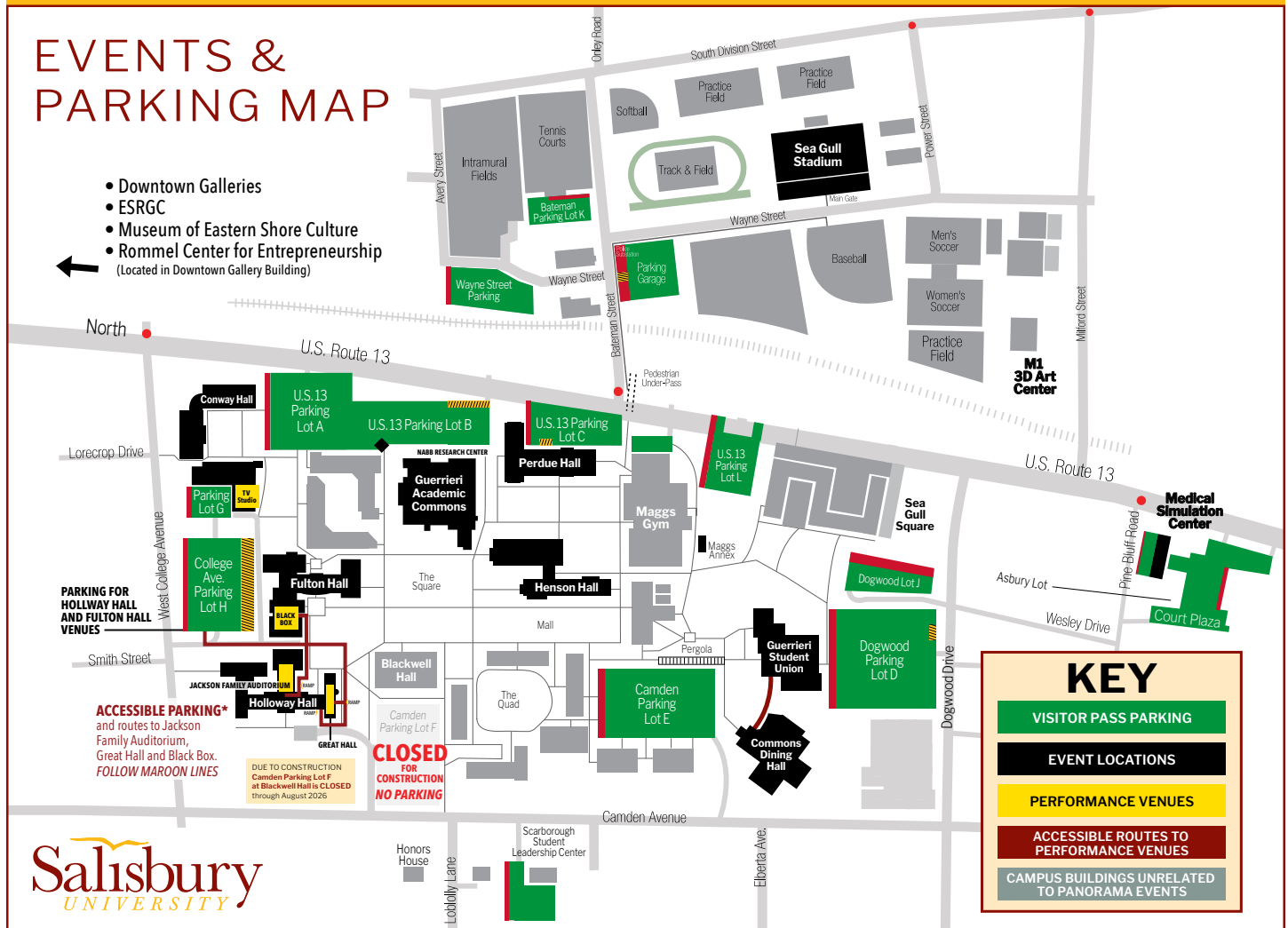
All visitors must request a **FREE visitor parking pass** to park on our campus.

You can get your parking pass authorization at salisbury.edu/visitor-parking or by scanning this QR code:



You can also call the **Parking Services Office at 410-543-6338**.

Please Note: Due to construction, **Camden Parking Lot F at Blackwell Hall is CLOSED** through August 2026. For events taking place in Holloway Hall and Fulton Hall, we suggest you park in College Avenue Parking Lot H. This lot also includes accessible routes to venues in these buildings.



WAYS TO STAY CONNECTED

Explore SU Know a student who is interested in attending SU? Currently, our Admissions team offers daily tours as well as Saturday open houses. Learn more at: salisbury.edu/visit The Admissions team is on hand from 8 a.m.-4:30 p.m. Monday-Friday to answer any questions you may have: admissions@salisbury.edu or **410-543-6161**.

Get Social With Us Check out a video tour on our YouTube channel: youtube.com/salisburyuniversity

View our playlists to learn more about SU, including spotlights on each of our academic programs and other areas of campus life. You can even take a virtual stroll through the Arboretum: salisbury.edu/arboretum Be sure to follow Salisbury University on Facebook and Instagram. **Go Gulls!** You can get the latest Sports news and connect with other Gull enthusiasts. Fans can follow the SU Sea Gulls on Facebook, Twitter and Instagram [@suseagulls](https://www.instagram.com/suseagulls)

CATEGORIES

PERFORMING ARTS

6

Cultural Affairs: Pianist Dynasty Battles; Guitarist Manuel Barrueco; Furia Flamenca; Brazilian Cia Armorial; Salsa Dance Lessons; Yo no me llamo; Music Workshop with Las Guaracheras; Las Guaracheras Salsa Music Performance; Symphony 21; D. Spaulding & the Den Dogs; ASH Trio; Duo Sorolla

Music, Theatre & Dance: PETER AND JUDY JACKSON MUSIC PROGRAM: Leonard Fu, Violinist; Singers' Showcase; Allegheny Ensemble; Celebration of Great Composers; Chris English: Blues in the Black Box; Faculty & Friends; Salisbury University Flute Day; Percussion Ensemble; World Drum Ensemble; Recital: Piano & Strings; Recital: Trenelle Dashiell, Soprano & Hunter Ness,

Bass-Baritone; Jazz Ensemble; Brass and Woodwinds Ensemble; Recital: Hannah Piasecki, Clarinet; Salisbury & University Chorales; Flute Ensemble; Salisbury Pops; PRESTO Concert; SSO Family Concert: Puppet Paradise with River City Puppets; SSO Symphony Pops: In the League with Grieg; Salisbury Youth Orchestra

BOBBI BIRON THEATRE PROGRAM: Head Over Heels; Heroes of the Fourth Turning

DANCE COMPANY: SU Dance Company Spring Concert; Salisbury Dance Festival; Dance on Screen; Dance Festival Meet & Greet the Artists

VISUAL ARTS & EXHIBITIONS

16

Art Department & SU Art Galleries: Climate Stories; Storytelling for Climate Change with Shane Hall; Wicomico River Stories with Gina Bloodworth & Shane Hall; Lynn Cazabon Visiting Artist Talk; Lionel Frazier White III Visiting Artist Talk; Johab Silva: Electric Liquid; 72nd Senior Exhibition: Fine Arts & Graphic Design; Laura West: A Walk Across the Ocean & Back; Nami Oshiro: Iyasasa; Mid-Atlantic Abstraction; Libby Rowe Visiting Artist Talk
Guerrieri Student Union Art Space: Tori Teiger, Emphyrean (Painting);

Isabel Wells, Veiled in Uncertainty (Painting); Kara Jordan, Fragments of Another World (Painting)

Museum of Eastern Shore Culture: Patrick Henry: Reflections on Home
Nabb Research Center for Delmarva History and Culture: The Bigger Picture of Aerial Photography; OLAS: Building Bridges; Artist Talk: Carole Boston Weatherford & Jeffrey Boston Weatherford

LITERARY ARTS & FILM

20

Cultural Affairs: Rosenwald, The Remarkable Story of a Jewish Partnership with African American Communities; Neptune Frost

Environmental Studies Colloquia: Migrations

Film at Fulton: Chicken for Linda; Three Colors: Blue; The Zone of Interest

Fulton Public Humanities: The Cremator; Captain Fantastic; El Sur

Modern Languages & Intercultural Studies Department: Madres paralelas (Parallel Mothers); Miucha, the voice of Bossa Nova (Miúcha, The Voice of

Bossa Nova); Yo no me llamo Ruben Blades (Ruben Blades Is Not My Name); Cassandra; Boca Chica

English Department: Robot Suicide: Death, Identity & AI in Science Fiction

SU Libraries & Bond Curriculum Resource Center: Annual African American Poetry Read-In

Writers on the Shore: Catherine Pierce; Randon Billings Noble; Rachel M. Hanson; Emily Rosko; Scarab Launch

LECTURES, SEMINARS, SYMPOSIUMS

23

Adventures in Ideas Humanities Seminar: The Russia-Ukraine Conflict in Historical & Global Perspective

Bosserman Center for Conflict Resolution: Season of Non-Violence; Lessons Learned from Phil Bosserman, Fred Rogers & Janusz Korczak; The Israeli-Palestinian Conflict: What Do Palestinians and Israelis Really Think?

Environmental Studies Colloquia: Study Abroad Experiences; Bridging Disciplines: Transdisciplinary Research & Teaching in the Brazilian Amazon; A Serpent in Eden: How Chessie the Sea Monster Swallowed Kent Island; Migrations

Fulton Public Humanities: Sister City International: PR; COVID-19 &

Americans' Mental Health; Themed Entertainment in the 21st Century

Fulton School of Liberal Arts: Fulton Faculty Colloquium

Modern Languages & Intercultural Studies Department: Francophone Lecture Series

Fulton Sustainability Committee Changing Climate/Changing World Lecture Series: Inequalities & Sustainability

Nabb Center for Delmarva History & Culture: Archaeology Month Lecture

PACE: Education & Engagement in Ukraine; Health, Human Rights & Migration: The Case of Haiti

Philosophy Department: 45th Annual Philosophy Symposium

HERITAGE MONTHS

26

BLACK HISTORY MONTH: Black History Month Kick-Off; All We Do Is Step, Stroll & Hop? What Is a Black Greek?; Michelle Scott: Onstage Entertainment, Off-Stage Labors: The Business of TOBA & Black Vaudeville; Soul Food Dinner; Be Color Brave, Not Color Blind; Neptune Frost; Rosenwald Schools on the Shore; Annual African American Poetry Read-In; Artist Talk: Transforming History into Art & Poetry

ASIAN AMERICAN AND PACIFIC ISLANDER HERITAGE MONTH: Gyotaku Paint Night; Buddha on the Silver Screen

INTERNATIONAL WOMEN'S MONTH: Eighth International Women's Day Conference; International Women's Month Guest Lecture by Edda L. Fields-Black; Las Guaracheras Salsa Performance & Workshop

FESTIVALS & SPECIAL EVENTS

30

Caribbean Student Association: Pre-Haitian Flag Day Celebration

Fulton School of Liberal Arts: Fulton Spring Arts Festival

Counseling Center: Take Back the Night; Out of the Darkness Campus Walk

PACE: Planning a Lower Shore 250; PACE Showcase; Lower Shore Nonprofit Summit; Civic Reflection Trainings

Office of Diversity & Inclusion: Multicultural Festival

OURCA: Student Research Conference

Shore Hatchery Competition

Summer Enrichment Academies

SU AROUND TOWN

33

Art Department: Sixth Annual Metal Menagerie

Fulton Feature Friday: Todd Smith & Friends; Blarney Pilgrims; Louise Anderson & Diana Wagner

Institute of Retired Persons

Modern Languages & Intercultural Studies Department: Community Conversation Hours in Spanish

Philosophy Department: Philosophy Café

CONTINUING THIS YEAR'S PANORAMA THEME:



LATINIDADES

This year, Salisbury University has chosen the cultural theme of **Latinidades** to showcase the profound influence Latin American and Latino people have across the U.S. and the globe. The Latino population in the U.S. is our nation's fastest growing and largest ethnic group, making up 19.1% of our total population, and this number is expected to grow to 25% in the next few years. **Latinidades** (/ˌlætɪnɪˈdædɛs/ plural) as a term can be translated as a **plurality of "latin-ness,"** encapsulating the rich and diverse cultural expressions of Latin American and Latino communities. Going beyond a single identity, it acknowledges the myriad of experiences, traditions and stories of resilience that shape the vibrant tapestry of Latino cultures.

Celebrating **Latinidades** encourages a nuanced exploration of shared heritage and individual strength, drawing attention to unique narratives found within each culture. This includes the voices and traditions of Indigenous and Afro-Latinos, often overshadowed by other perspectives. Embracing this widely influential theme over the course of the next year is an open invitation to explore the dynamic intersections of Latin American and Latino cultures and identities, fostering a deeper understanding and appreciation for the complexities that exist within this mosaic of communities that also make up the fabric of daily life in Delmarva.

Spanish

Este año, la Universidad de Salisbury ha elegido el tema cultural **Latinidades** para mostrar la profunda influencia que tienen los latinoamericanos y latinos en los EE. UU. y el mundo. La población latina en los EE. UU. es el grupo étnico más grande y de más rápido crecimiento de nuestra nación y representa el 19.1 % de nuestra población total, y se espera que este número crezca al 25 % en los próximos años. **Latinidades** (/ˌlætɪnɪˈdædɛs/ plural) como término, podría traducirse como una pluralidad de "latinidad" que resume las ricas y diversas expresiones culturales de las comunidades latinoamericanas y latinas. Al ir más allá de una única identidad, reconoce la gran cantidad de experiencias, tradiciones e historias de resiliencia que dan forma al vibrante tapiz de las culturas latinas.

Celebrar las **Latinidades** fomenta una exploración matizada del patrimonio compartido y la fortaleza individual, llamando la atención sobre narrativas únicas que se encuentran dentro de cada cultura. Esto incluye las voces y tradiciones de los indígenas y afrolatinos, que a menudo quedan eclipsadas por otras perspectivas. Adoptar este tema tan influyente en el transcurso del próximo año es una invitación abierta a explorar las intersecciones dinámicas de las culturas e identidades latinoamericanas y latinas, fomentando una comprensión y una apreciación más profundas de las complejidades que existen dentro de este mosaico de comunidades que también conforman el tejido de la vida diaria en Delmarva.

Portuguese

Este ano, a Salisbury University escolheu o tema cultural **Latinidades** para mostrar a profunda influência que os latino-americanos/latinos têm nos EUA e no mundo. A população latina nos EUA é o maior grupo étnico e o que cresce mais rápido em nosso país, representando 19,1% de nossa população total, e espera-se que esse número aumente para 25% nos próximos anos. **Latinidades** (/ˌlætɪnɪˈdædɛs/ plural) como termo, pode ser traduzido como uma pluralidade de "latinidade", encapsulando as expressões culturais ricas e diversas das comunidades latino-americanas/latinas. Indo além de uma única identidade, reconhece a infinidade de experiências, tradições e histórias de resiliência que moldam a vibrante tapeçaria das culturas latinas.

Celebrar as **Latinidades** incentiva uma exploração diferenciada da herança compartilhada e da força individual, chamando a atenção para narrativas únicas encontradas em cada cultura. Isso inclui as vozes e tradições indígenas e afro-latinas, muitas vezes ofuscadas por outras perspectivas. Abraçar esse tema amplamente influente ao longo do próximo ano é um convite aberto para explorar as interseções dinâmicas das culturas e identidades latino-americanas/latinas, promovendo uma compreensão e apreciação mais profundas das complexidades que existem nesse mosaico de comunidades que também compõem a estrutura da vida diária em Delmarva.

Haitian Creole

Ane sa a, Inivèsite Salisbury te chwazi tèm kiltirèl **Latinidades** pou montre enfliyans pwofon Ameriken Latin ak moun Latino gen atravè peyi Etazini an ak glòb la. Popilasyon Latino nan peyi Etazini an se nasyon ki pi rapid nou an nan kesyon agrandisman ak pi gwo gwoup etnik ki moute jiska 19.1% nan popilasyon total nou an, epi nimewo sa a espere grandi jiska 25% nan pwochen kèk ane ankò. **Latinidades** (/ˌlætɪnɪˈdædɛs/ pliryèl) kòm yon tèm, ta ka tradui kòm yon pliralite nan "latin-ness" ki anglobe ekspresyon kiltirèl ki rich epi ki divès nan kominote Latin Ameriken ak Latino yo. Ale pi lwen pase yon sèl idantite, yo rekonèt plizyè milyon nan eksperyans, tradisyon, ak istwa nan detèminasyon ki fòme tapèri solid la nan kilti Latino yo.

Selebre **Latinidades** ankouraje yon eksplorasyon ki gen divès sans nan eritaj pataje ak fòs endividyèl, desine atansyon sou narasyon inik yo, yo jwenn yo nan chak kilti. Sa a gen ladon vwa yo ak tradisyon Endijèn ak Afwo-Latino yo, souvan yo kouvri akoz yon seri lòt pèspektiv. Lè yo deside trete gwo tèm enfliyans sa a pandan kou a nan ane k'ap vini an se yon envitasyon ki ouvri pou yo ka obsève entèseksyon dinamik yo nan kilti Latin Ameriken ak Latino yo ak idantite yo, sa k'ap favorize yon konpreyansyon ki pi pwofon ak apresyasyon pou sa ki parèt pi konplèks yo ki egziste anndan mozaik kominote sila a sa ki fè tou fabrik lavi chak jou a nan Delmarva.



Events related to this theme are labeled with this **Latinidades** icon throughout **Panorama**.

PLEASE NOTE: MOST EVENTS IN THE PERFORMING ARTS SECTION REQUIRE TICKETS.

All are open to the public. Many are free, but not all.

Each event in this section is labeled to indicate **T**= Ticket Needed, **F**= Free, **\$**= Not Free

- All Cultural Affairs performances require a FREE TICKET. The salsa dance classes and music workshop are free and open to the public and do not require a ticket. The Symphony 21 concert is using a “pay what you can” model for tickets through symphony21.org. SU is not handling tickets for this event, but they are required.
- Music, Theatre and Dance Department events vary in price from free to \$25. Please see the Music, Theatre and Dance Price Chart at the end of this section for price information for each event or visit our box office where you can purchase tickets and get information: salisbury.edu/performingarts



Cultural Affairs

FREE TICKETS ARE REQUIRED for all performances in this section. For free required tickets: salisbury.edu/performingarts
For information: **410-548-3586** • salisbury.edu/culturalaffairs

PATRICIA WHITE WROTEN PIANO CONCERT SERIES

Features established and emerging concert pianists at the top of their craft.



Dynasty Battles

Monday, February 17 • 7 p.m.

Holloway Hall, Jackson Family Auditorium • **F|T**

Visionary pianist Dynasty Battles has a repertoire spanning Baroque to new music, and his unique approach to concert performance sometimes includes improvisation. In his SU debut, Battles plays George Walker's Sonata No. 1, alongside improvisations and Schubert Impromptus.

CLASSIC SERIES

Features established artists and projects widely recognized for their world-class artistry and singular interpretations of classical and historical forms, genres, and repertoire.

Guitarist Manuel Barrueco Celebrating 50 Years on Stage 🎸

Thursday, March 13 • 7 p.m.

Holloway Hall, Jackson Family Auditorium • **F|T**

The legendary Manuel Barrueco is internationally recognized as one of the most important guitarists of our time. His unique artistry has been continually described as that of a superb instrumentalist and a superior and elegant musician, possessing a seductive sound and uncommon lyrical gifts. *The Palm Beach Post* wrote: "Somewhere from the heavens, Segovia was surely smiling down ..."



GLOBAL EXPERIENCES SERIES

Features diverse artists, genres, forms and practices from around the world.



Furia Flamenca 🌐

Saturday, March 1 • 7 p.m.

Holloway Hall, Jackson Family Auditorium • F|T

Award-winning flamenco dance company Furia Flamenca brings you the excitement and passion of flamenco music and dance in this exhilarating "tablao"-style show. Dancers Estela Velez de Paredez, artistic director of Furia Flamenca, and Daniel Paredez, assistant director, are joined by guitarist and singer Juan L. Romero, director and founder of Fusion Jonda. Experience the fiery emotion of flamenco in this exciting and intimate performance.

Brazilian Cia Armorial: Celebrating 200 Years of Diplomatic Relations Between Brazil & the U.S. 🌐

Monday, March 10

Brazilian Folk Music Lecture: 6 p.m. • Performance: 7 p.m.

Holloway Hall, Great Hall • F|T

Cia Armorial performs Brazilian folk music featuring Marcello Linhos on viola caipira and vocals, Nelson Latif on seven-string guitar, and Marcelo Lima on mandolin. All these string instruments are typically Brazilian, especially the viola caipira, a plucked 10-string guitar and a symbol of Brazilian country music.

Sponsored by World Artists Experiences, Inc.; the Embassy of Brazil, Washington, DC; and the SU Office of Cultural Affairs.



NEW VISIONS SERIES



Features innovative artists and projects whose work redefines, defies, expands and/or creates new genres within our current contemporary context.

Symphony 21

Saturday, April 5 • 7 p.m.

Holloway Hall, Jackson Family Auditorium • F|T

This performance is "pay what you can," and you must get your ticket at: Symphony21.org

Symphony 21 is a creative arts movement that exposes youths and the community to modern approaches to music, technology and visual arts. This multimedia concert experience features a diverse ensemble of some of the world's most innovative musicians, synchronized visual animation and a modern cinematic orchestral sound. Founded by Salisbury native, composer and activist Daniel J. Bowen, Symphony 21's concert experiences offer a family friendly, interactive environment, aiming to inspire and unite the community through the power of music.

Co-sponsored by the Peter and Judy Jackson Music Program and the Fulton School of Liberal Arts.

Cultural Affairs

FREE TICKETS ARE REQUIRED for all performances in this section. For free required tickets: salisbury.edu/performingarts
For information: **410-548-3586** • salisbury.edu/culturalaffairs

EXPERIENCE SALSA!



Co-sponsored by the Office of Cultural Affairs and the Organization of Latin American Students (OLAS)

Salsa Dance Lessons 🌟

Tuesdays, March 4 & March 11 • 7-8 p.m.
Holloway Hall, Jackson Family Auditorium

Join us to dive into the essentials, embrace the infectious rhythm and experience the vibrant essence of salsa with salsa dance teachers Charlin and JonJon. Please wear comfortable shoes, clothing and don't forget your water bottle. All levels welcome, free and open to the public - no tickets required.

Please Note: Non-SU students under the age of 18 must be accompanied by a guardian.

Salsa Film Screening 🌟

Yo no me llamo Ruben Blades (Ruben Blades Is Not My Name)

Wednesday, March 12 • 7 p.m.
Fulton Hall 111 - Herman van Apeldoorn Film Center

Presented by the Department of Modern Languages and Intercultural Studies.

See this Spanish Film Festival selection on page 21.

Music Workshop with Las Guaracheras Salsa, Percussion & Colombian Pacific Music 🌟

Tuesday, March 25 • 7 p.m.
Guerrieri Student Union, Wicomico Room

Explore the rich fusion of Afro-Caribbean and Latin American rhythms that characterize the music of Las Guaracheras. All are welcome, free and open to the public - no tickets required.



LIVE PERFORMANCE

Las Guaracheras 🌟

Wednesday, March 26 • 7 p.m.
Holloway Hall, Jackson Family Auditorium • F|T

Celebrate International Women's Month with Las Guaracheras - an all-women salsa sextet from Cali, Colombia. With a motto of "strength, unity, love, sisterhood and music," their cultural and artistic objective is to uplift a female voice within Afro-Latin music and build a more inclusive, diverse and respectful cultural space for all. Their music communicates joy, memory and transformation through an explosive show that provokes dancing, singing and reflection.

THE LAB SERIES

Features adventurous, emerging performing artists creating new, original work that utilizes technology in its creation or delivery and sometimes involves our students in the process.

D. Spaulding & the Den Dogs

Saturday, April 12 • 7:30 p.m.
Conway Hall 318, TV Studio • F|T

D. Spaulding and the Den Dogs create eclectic songs about nosebleeds, gargoyles and their collective journey toward the ethereal plane. Their music draws from influences including art rock, shoegaze, classical and dream pop. Both groups consist of members Grayson English, Jessica English, Dan Moreno-Holt and Eric Shuster. The performance features live visuals by SU New Media Program students and sound tech by SU Music Technology Program students.



PETER & JUDY JACKSON CHAMBER MUSIC SERIES

Providing opportunities for live chamber music concerts to be heard and enjoyed on the Eastern Shore.

ASH Trio

Tuesday, April 1 • 7 p.m.
Holloway Hall, Great Hall • F|T

Formed in fall 2024, this new flute trio is named for its founding members: Lisa Adams, Jan Schreibman and Sally Hendon. The three met through the SU Flute Choir, and in this inaugural performance, they offer a unique program spanning the centuries from Beethoven to Beefink with the flute at its core.



Duo Sorolla 🎻

Tuesday, April 29 • 7 p.m.
Holloway Hall, Great Hall • F|T

After meeting in graduate school at the Peabody Conservatory, Ismar Gomes (cello) and Wan-Chi Su (piano) began a collaborative relationship that became Duo Sorolla. For this concert, they present their "South American Tour" program. In continuation of SU's Latinidades theme, the concert features works by Gabriela Lena Frank, Constantino Gaito, Manuel Ponce, Heitor Villa-Lobos and Juan Pablo Contreras.

Music, Theatre & Dance

For details & tickets: salisbury.edu/performingarts
 (ticket prices are on p. 13)

PETER & JUDY JACKSON MUSIC PROGRAM



Leonard Fu, Violinist

Wednesday, February 12 • 7:30 p.m.
 Holloway Hall, Great Hall • F|T

A laureate of major competitions such as the Joseph Joachim, Andrea Postacchini and Rodolfo Lipizer international violin competitions, emerging artist Fu presents "Infinity Within Bounds: Creating Layers and Narratives with Solo Violin." Enjoy this performance and discussion of works for violin only, with an emphasis on contemporary pieces by Lila Wildly Quillin, Paul Wiancko and Fu.

Sponsored by the Office of Cultural Affairs and Allegheny Ensemble.

Allegheny Ensemble

Wednesday, February 26 • 7:30 p.m.
 Holloway Hall, Great Hall • F|T

Presents "Fascinating Rhythm" with guests Amos Lawrence, violin; Yuri Tomenko, viola; and Cameron Raecke, viola, joining Sachiho Murasugi, violin, and Jeffrey Schoyen, cello. Works to be performed include Brahms Viola Quintet in G major, op. 111 and works by Gershwin. A Student Showcase is also featured.



Celebration of Great Composers Johann Strauss II – Dance Through Time with the Waltz King!

Sunday, March 2 • 3 & 5 p.m.
 Holloway Hall, Great Hall • F|T

Join us for a magical afternoon of music as we pay tribute to the legendary Johann Strauss II, the beloved Waltz King! This special annual recital features enchanting performances by a guest pianist and talented local young musicians. Immerse yourself in the world of waltzes, polkas and other dance music as we celebrate Strauss' influence on the art of composition. Whether you're a lifelong fan of classical music or a newcomer, this event promises to be a delightful journey through the rhythms of time.



Singers' Showcase

Wednesday, February 19 • 7:30 p.m.
 Holloway Hall, Great Hall • \$|T

SU music – vocal performance majors razzle-dazzle you with their prize-winning renditions of classical, musical theatre and commercial music repertoire in preparation for this year's National Association of Teachers of Singing student auditions.

Chris English: Blues in the Black Box

Friday, March 28
7:30 p.m.
Fulton Hall, Black Box
Theatre • \$|T



Dedicated to his craft and the spirit of the blues, Chris is a veteran blues artist and SU Jackson Music Program faculty member. Program includes a variety of acoustic and electric blues, and original compositions and songs from his newly released sixth album, *Old, New, Borrowed and Blues*, in an intimate setting.

Brass & Woodwinds Ensemble

Wednesday, April 2 • 7:30 p.m. • Holloway Hall, Great Hall • \$|T

Faculty & Friends

Wednesday, April 9 • 7:30 p.m. • Holloway Hall, Great Hall • \$|T

The annual tradition where Jackson Music Program colleagues Danielle Cummings and William Folger perform just for fun with special guests, including current students, past students, colleagues and friends.

Salisbury University Flute Day

Saturday, April 12 • 8:30 a.m.-4:30 p.m. • Fulton Hall 112

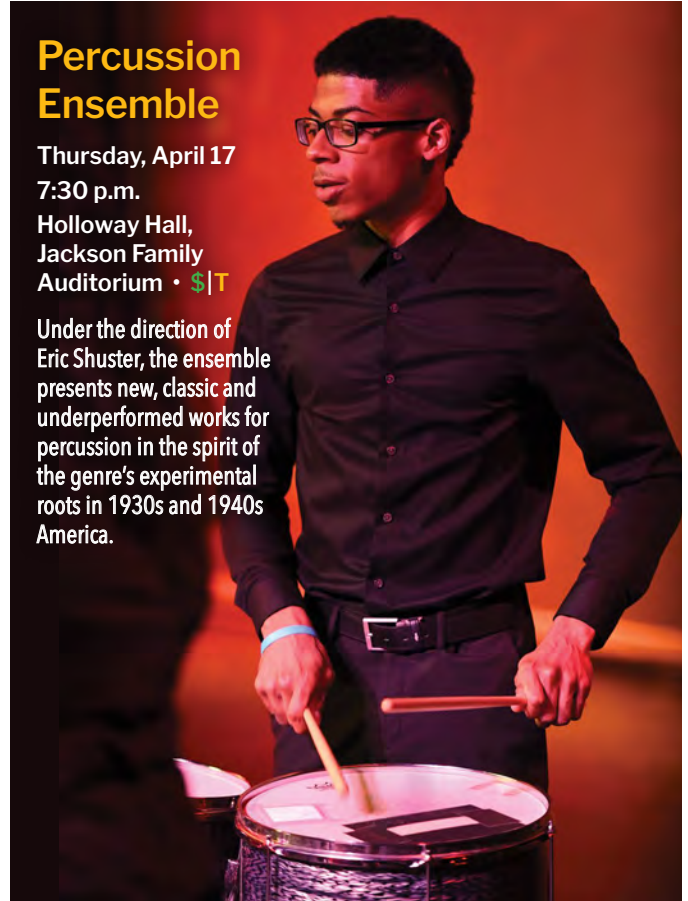
The SU Flute Studio presents its inaugural Flute Day with guest flutist Wendy Webb Kummer, director of the Pittsburgh Flute Academy. Enjoy full-group classes, small-class breakout sessions and a culminating performance to end the day's activities. Please visit the Jackson Music Program online for more information and registration - or contact flute instructor Lisa Adams at ltadams@salisbury.edu.



Percussion Ensemble

Thursday, April 17
7:30 p.m.
Holloway Hall,
Jackson Family
Auditorium • \$|T

Under the direction of Eric Shuster, the ensemble presents new, classic and underperformed works for percussion in the spirit of the genre's experimental roots in 1930s and 1940s America.



World Drum Ensemble

Friday, April 18 • 7:30 p.m.
Holloway Hall, Jackson Family Auditorium • \$|T

The World Drum Experience features Latin and African rhythms and classic songs from the '70s, '80s and '90s. The ensemble features afro beat, reggae, steel drums and other ethnic percussion instruments.



Music, Theatre & Dance

For details & tickets: salisbury.edu/performingarts
 (ticket prices are on p. 13)

Recital: Piano & Strings
 Friday, April 25 • 2 p.m.
 Holloway Hall, Great Hall • F|T

Recital:
Trenelle Dashiell,
 Soprano
 & *Hunter Ness,*
 Bass-Baritone



Trenelle Dashiell



Hunter Ness

Sunday, April 27 • 7:30 p.m. • Holloway Hall, Great Hall • F|T

Jazz Ensemble
 Thursday, May 1 • 7:30 p.m.
 Holloway Hall, Jackson Family Auditorium • \$|T

The SU Jazz Ensemble – a student and community collaboration – plays music from the great American songbook with vocalists Keily Jelly and Grace McCreary Bagley. Contemporary jazz, funk and fusion are featured, including new music by Director Jerry Tabor.



Salisbury & University Chorales Present Jubilate Deo by Dan Forest

Saturday, May 3 • 7:30 p.m.
 Holloway Hall, Jackson Family Auditorium • \$|T

The concert features a full orchestra and soloists, in anticipation of the 100th anniversary of Salisbury University in fall 2025.

Flute Ensemble

Sunday, May 4 • 2 p.m. • Holloway Hall, Great Hall • F|T

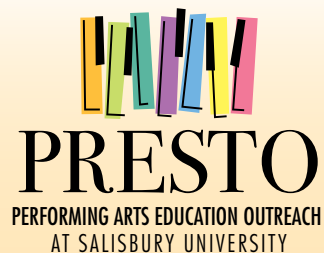
The SU Flute Ensemble presents its spring performance. The ensemble is comprised of students and community members playing a variety of classic and contemporary music for flute choir.

Salisbury Pops

Tuesday, May 6 • 7:30 p.m.
 Holloway Hall, Jackson Family Auditorium • \$|T

Recital: Hannah Piasecki, Clarinet

Wednesday, May 11 • 7:30 p.m. • Holloway Hall, Great Hall • \$|T



PRESTO

Learn more and register for fall classes: salisbury.edu/presto

Lessons February 10-May 2

PRESTO's spring semester begins February 10 for a 12-week session through May 2. PRESTO offers learners of all ages individual lessons in piano, strings, voice, guitar, percussion, and some wind and brass instruments.

PRESTO Concerts

Tuesday, May 13 • 5 p.m. & 7 p.m. • Holloway Hall, Great Hall • F|T

SALISBURY SYMPHONY ORCHESTRA

Family Concert: Puppet Paradise with River City Puppets Featuring Dylan Shelton, Puppeteer

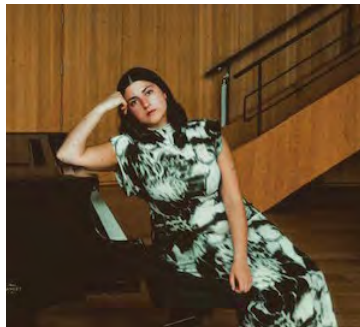
Friday, March 7 • 7:30 p.m.
Holloway Hall, Jackson Family
Auditorium • \$|T



Shelton is the founder of River City Puppets, a touring theatre that blends the arts of puppetry and storytelling. Shelton is a lead puppeteer for "Smartpath," an Emmy Award-winning web series for children. His puppetry has been featured in performances with the Cincinnati Opera and numerous symphony orchestras.

Symphony Pops: In the League with Grieg Featuring Lana Suran, Pianist

Saturday, May 10 • 7:30 p.m.
Holloway Hall, Jackson Family
Auditorium • \$|T



Suran is a distinguished Swedish pianist, celebrated as a leading Scandinavian pianist of her generation. Recognized by the Augsburgers Allgemeine as "simply an outstanding artist," Suran's performances are known for their deep emotional resonance and tonal nuance, demonstrating her profound understanding of music and ability to convey powerful emotions.

Salisbury Youth Orchestra

Thursday, May 15 • 7:30 p.m.
Holloway Hall, Jackson Family Auditorium • \$|T

Currently made up of members from eighth to twelfth grade, the group is a full orchestra, including strings, winds, brass and percussion. The experience of playing in a full orchestra is not offered in area schools. The conductor is Jeffrey Schoyen, an SU professor of music and the artistic director of Salisbury Symphony Orchestra.



Music, Theatre & Dance TICKETING INFORMATION

Tickets are required for ALL EVENTS.
See pricing information for individual events below.

To purchase in-person &
livestream tickets, visit:
salisbury.edu/performingarts



FREE For All, But Tickets Are REQUIRED

- Leonard Fu
- Allegheny Ensemble Concert
- Celebration of Great Composers
- Piano/Strings Recital
- Student Recitals
- PRESTO
- Flute Ensemble

General Public \$25, Senior \$20,
Faculty/Staff \$10

- Salisbury Symphony Orchestra
March & May Concerts

General Public \$20, Senior \$15,
Faculty/Staff \$10, Students \$5

- Head Over Heels

General Public \$15, Senior \$10,
Faculty/Staff/Students \$5

- Spring Dance Concert
- Heroes of the Fourth Turning

General Public & Senior \$15,
Faculty/Staff \$10/Students \$5

- Chris English

General Public \$10, Senior \$5,
Faculty/Staff Free

- Singers' Showcase
- Brass & Woodwinds Ensemble
- Faculty & Friends
- Percussion Ensemble
- World Drum Experience
- Jazz Ensemble
- Salisbury & University Chorales
- Salisbury Pops Concert

General Public \$10, Students \$5

- Salisbury Dance Festival

General Public \$5, Senior, Faculty/Staff &
Students \$3

- Salisbury Youth Orchestra

Music, Theatre & Dance

For details & tickets: salisbury.edu/performingarts
 (ticket prices are on p. 13)

BOBBI BIRON THEATRE PROGRAM

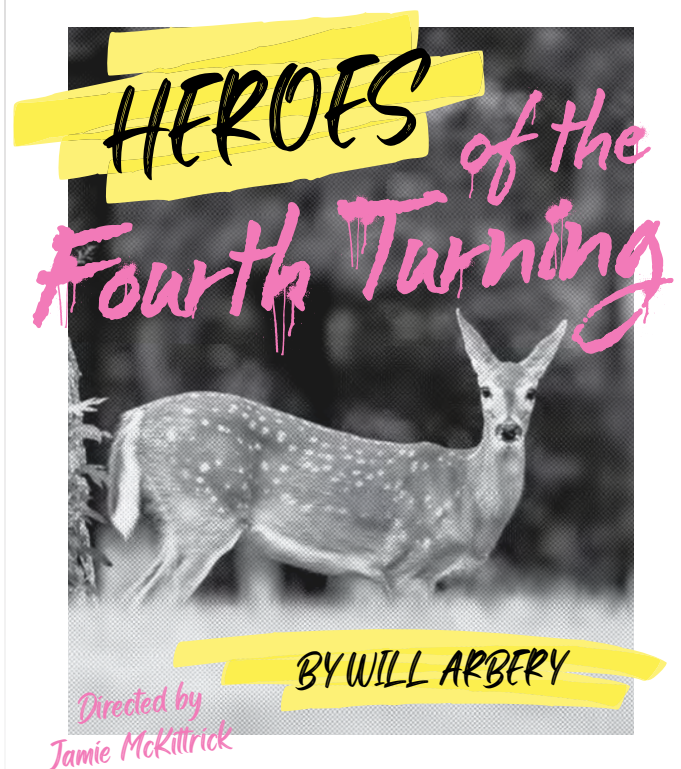
Head Over Heels

Music & Lyrics by The Go-Go's
 Conceived by & Original Book by Jeff Whitty
 Adapted by James Magruder
 Directed by Blake Harris
 Music Direction by William M. Folger

Thursday-Sunday, March 6-9*
 7:30 p.m. & *2 p.m.

Fulton Hall, Black Box Theatre • \$|T

Embark on a rambunctious journey with *Head Over Heels*, a hilarious musical fairy tale set to the tunes of the iconic band the Go-Go's, including the hit songs "We Got the Beat," "Our Lips Are Sealed," "Vacation" and Belinda Carlisle's "Heaven Is a Place on Earth." Join a royal family on an outrageous journey to save their kingdom, discovering themselves and love's true power along the way.



Heroes of the Fourth Turning

By Will Arbery
 Directed by Jamie McKittrick

Thursday-Sunday, May 1-4*
 7:30 p.m. & *2 p.m.

Fulton Hall, Black Box Theatre • F|T

As a celebratory reunion between college friends draws late into the night, a group of young conservatives spiral into spiritual crisis and political clashes. This haunting play explores personal and national conflicts with rapture and clarity, capturing the essence of a nation at odds with itself.

DANCE PROGRAM

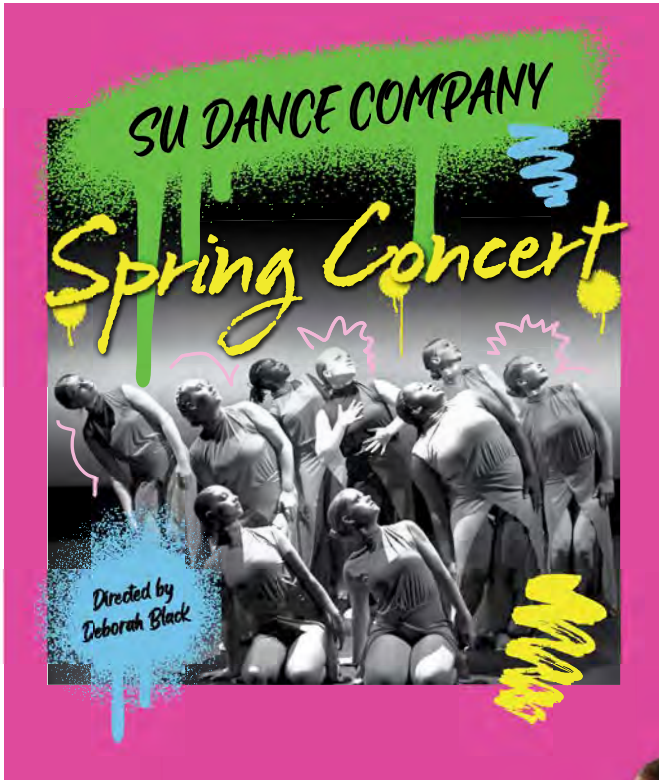
SU Dance Company Spring Concert

Directed by Deborah Black

Friday-Sunday, April 4-6* • 7:30 p.m. & * 2 p.m.

Fulton Hall, Black Box Theatre • \$|T

Features choreography by faculty and prominent guest artists.



Salisbury Dance Festival

Saturday-Sunday, April 12- 13*

7:30 p.m. & * 2 p.m.

Holloway Hall, Jackson Family Auditorium • \$|T

SU presents its inaugural festival celebrating all things dance on the Eastern Shore and beyond. Join us as we showcase SU's Dance Company, local dance studios, clubs and groups alongside professional choreographed works by Daniel Fetecua-Soto and his company *Pajarillo Pinta'o*.

Co-sponsored by the Fulton School of Liberal Arts.



Photo Credit: Melissa Kratzer



Dance on Screen

An Evening of Presented Dance Films

Thursday, April 10 • 7 p.m.

Holloway Hall, Great Hall

As part of Salisbury's inaugural Dance Festival, enjoy an evening of screen dances created by local and regional choreographers and artists.



Free and open to the public. This program contains nudity.



Pajarillo Pinta'o

Meet & Greet the Artists

Salisbury Dance Festival

Friday, April 11 • 7 p.m. • Holloway Hall, Great Hall

Meet and greet the visiting artists for Salisbury's inaugural Dance Festival! Daniel Fetecua-Soto, native of Bogotá, Colombia, and former soloist with the José Limón Dance Company, is the director of *Pajarillo Pinta'o*. Meet with company members of *Pajarillo Pinta'o*, enjoy some refreshments and participate in a traditional Colombian dance demonstration.

Free and open to the public.

Art Department & SU Art Galleries

For hours & visit details: suartgalleries.org

Climate Stories

**Lynn Cazabon, Leigh Davis, Sondra Arkin
& Ellyn Weiss/The Human Flood
& Lionel Frazier White III**

January 24-March 29
SU Art Galleries | Downtown

Exhibition Reception:

Friday, February 21 • 5-7 p.m.

Floods, migration, emotion, grief and the gift of life on Earth are the components of this group exhibition about climate change featuring artists' projects that explore our present state of weather emergencies and how we navigate them.

This exhibition is in partnership with the Environmental Studies Department.

Photo Credit: Pete Duvall, *Anything Photographic*



Lynn Cazabon Visiting Artist Talk

Thursday, February 20 • 5:30 p.m.
SU Art Galleries | Downtown

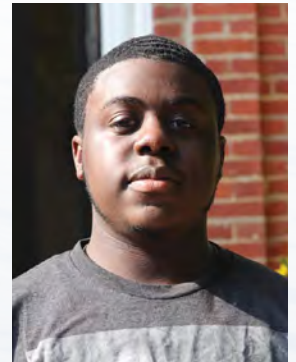
Cazabon is a multimedia artist whose projects employ participation as a strategy to deepen public engagement between environmental and social issues. Her project, *Emotional Climate*, made possible by a 2024 Fulbright Senior Scholar Award, includes short statements from people in the state of Queensland, Australia, expressing their emotions in response to climate change.



Lionel Frazier White III Visiting Artist Talk

Thursday, March 27 • 5:30 p.m.
Conway Hall 156

White is an interdisciplinary conceptual artist exploring themes of how forced and coerced labor affects family pathology, erasure, displacement, reassertion and gentrification. From the DC area, he is a passionate arts educator and earned his B.F.A. from The George Washington University Corcoran School of Art and Design.



Storytelling for Climate Change with Shane Hall

Wednesday, March 5 • 5:30 p.m.
SU Art Galleries | Downtown

Personal storytelling can help communities take up bold conversations and build more resilience in the face of climate change. Join us for this interactive workshop where you'll listen to personal "climate stories" and begin to tell your own.

Wicomico River Stories with Gina Bloodworth & Shane Hall

Saturday, March 29 • 1 p.m.
SU Art Galleries | Downtown

The place we now call Salisbury has always shaped – and been shaped by – the Wicomico River. Join our "mobile classroom" to explore the often-overlooked stories and features of Salisbury's downtown and waterfront.

Laura West: A Walk Across the Ocean & Back

January 24-February 28
 SU Art Galleries | Gallery 128, Conway Hall

Closing Reception:
 Thursday, February 6 • 5-7 p.m.

A tribute to the artist's Romanian experience during two Fulbright research fellowships and guided by the words of Native American Chief Seattle, "take only memories, leave only footprints," West's sculptural works are deeply rooted in tradition and explore unknown territories with a pioneering approach in technology.

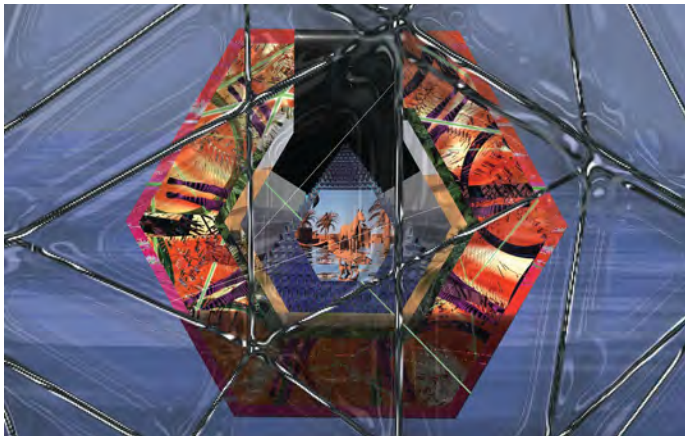


Johab Silva: Electric Liquid

January 31-March 29
 SU Art Galleries | Fulton Hall, University Gallery

Exhibition Reception:
 Friday, January 31 • 5-7 p.m.

This new media exhibition explores urban environments in nature and the role of water in them. Through video projections, installations and sculptures, Silva's personal experiences and research point to how this electric fluid plays in the fabric of human existence and ask if we are ready to deal with a world shaped by water.



Libby Rowe Visiting Artist Talk

Thursday, April 3 • 5:30 p.m.
 Conway Hall 156

Rowe's artistic work explores the sociological, physiological and psychological aspects of femininity. Her interdisciplinary art delves into ideas of identity and belonging, often examining how self-definitions are shaped by social and domestic constructs.



72nd Senior Exhibition: Fine Arts & Graphic Design

April 14-May 13

FINE ARTS
 SU Art Galleries | Downtown

GRAPHIC DESIGN
 Fulton Hall, University Gallery

Awards Reception:
 Friday, April 18 • 5-7 p.m.

Awards Reception:
 Friday, April 25 • 5-7 p.m.

Experience the culmination of graduating art majors' academic journeys as they present captivating capstone projects in the Senior Exhibition course under the guidance of Professor Jinchul Kim. This exclusive showcase provides a unique platform for students to demonstrate their artistic skills and knowledge through the curation of a professional art exhibit.

Art Department & SU Art Galleries

For hours & visit details: suartgalleries.org

Nami Oshiro: Iyasasa

June 13-August 9

SU Art Galleries | Fulton Hall, University Gallery

Artist Talk & Reception:

Tuesday, June 24 • 5-7 p.m.

Oshiro makes drawings, paintings and comics that play with absurdities in response to societal constructs like race and gender. Her style is influenced by her Okinawan-Japanese background and movements like ukiyo-e and shin hanga. "Iyasasa" is a cry used in traditional Okinawan folk songs. It is a chant of emphasis with no literal meaning. Nevertheless, it has been passed down in music through generations.

Mid-Atlantic Abstraction

June 20-August 2

SU Art Galleries | Downtown

Exhibition Reception:

Friday, June 20 • 5-7 p.m.

Exploring shape, form, color, gesture and emotive movements, the artists in this regional survey push the boundaries of contemporary art beyond representation of known visual reality toward a central stream of non-objective painting, sculpture and performance.

Image Credit: Tom Bunnell



Guerrieri Student Union Art Space

For information: salisbury.edu/gsu/artspace
410-543-6274

Guerrieri Student Union, Second Floor Lounge

Each month, the Guerrieri Student Union Art Space showcases the work of talented SU art students. In addition, the Art Space website features the current artist and their exhibition, as well as the exhibition schedule and a gallery of all the artists, their artwork and their price lists.

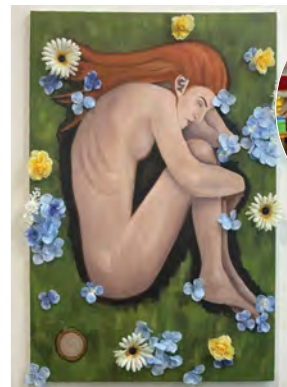


Tori Teiger

Empyrean

(Painting)

February 3-March 6



Isabel Wells

Veiled in Uncertainty

(Painting)

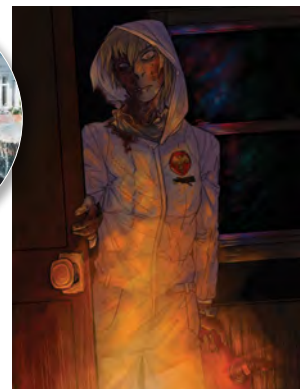
March 7-April 3



Kara Jordan

Fragments of Another World (Painting)

April 4-May 9



Nabb Research Center for Delmarva History & Culture

For information: salisbury.edu/nabb



The Bigger Picture of Aerial Photography

Opening January 27 • Monday-Friday • 10 a.m.-4 p.m.
Guerrieri Academic Commons, Thompson Gallery,
4th Floor

Using aerial photos from the Nabb Center archives, this exhibit explores the history of aerial photography from hot air balloons to present day. Learn about the many uses of aerial photography and understand just how important it is to see the world from above.

OLAS: Building Bridges

Opening January 27
Open During Guerrieri Academic Commons Hours
Guerrieri Academic Commons, 1st Floor Lobby

Reception & Discussion:
Wednesday, February 5 • 4:30 p.m.

The Organization of Latin American Students (OLAS) celebrates more than 20 years of promoting Latin American cultures and communities at SU through a bilingual exhibition. Featuring photographs, documents and interviews with alumni, it highlights OLAS' contributions to cultural education, outreach and diversity, inspiring student engagement with the vibrant community.

La Organización de Estudiantes Latinoamericanos (OLAS) celebra más de 20 años de promoción de las culturas latinoamericanas en la Universidad de Salisbury a través de una exhibición bilingüe. Fotografías, documentos y entrevistas con exalumnos, muestran las contribuciones de OLAS a la educación intercultural, la diversidad y la inclusión, inspirando la participación estudiantil en las comunidades latinas en el área.

Co-sponsored by Fulton Public Humanities, the Modern Languages and Intercultural Studies Department, and the Nabb Center for Delmarva History and Culture.



Artist Talk:

Transforming History into Art & Poetry

Thursday, February 27 • 5 p.m.
Guerrieri Student Union, Wicomico Room

As part of SU's Black History Month celebrations Carol and Jeffrey Boston Weatherford discuss the creative process behind their powerful book *KIN: Rooted in Hope*.

Sponsored by Fulton Public Humanities, Edward H. Nabb Research Center, SU Libraries, Bond Curriculum Resource Center, Art Department, Office of Diversity and Inclusion, Seidel School of Education, English Department, Office of Cultural Affairs, and Student Government Association.

See full listing on page 28.

Museum of Eastern Shore Culture

For information:
museumofeasternshorecultureatsu.org

Patrick Henry: Reflections on Home

Exhibition on View January 17-March 31

Attend the exhibition, opening reception and artist talk by one of the Eastern Shore's most influential artists.

See full listing on page 34.

Cultural Affairs

For information: **410-548-3586** or visit salisbury.edu/culturalaffairs

Rosenwald, The Remarkable Story of a Jewish Partnership with African American Communities

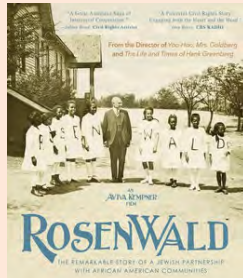
**A Film by Aviva Kempner
Film Screening & Discussion**

**Wednesday, January 29 • 7 p.m.
Fulton Hall 111 –
Herman van Apeldoorn Film Center**

A documentary on the story of how Jewish businessman and philanthropist Julius Rosenwald joined with Booker T. Washington and African American communities to build schools for underserved African American children during the early part of the 20th century. Event includes an introduction offered by Andre Nieto Jaime and post-screening discussion led by Clara Small.

Co-sponsored by the Beach to Bay Heritage Area and the Nabb Center for Delmarva History and Culture.

See the associated Rosenwald Schools on the Shore Panel on page 27.



Neptune Frost

**A Film by Saul Williams & Anisia Uzeyman
Film Screening & Discussion**

**Thursday, February 13 • 7 p.m.
Guerrieri Student Union, Wicomico Room**

See full listing in Black History Month section on page 27.



Environmental Studies Colloquia

For information: **410-548-3848**

Migrations

**Wednesday, April 30 • 7 p.m.
Guerrieri Academic Commons,
Assembly Hall**

Tom Horton and David Harp screen their new *Bay Journal* film, produced with collaborator Sandy Cannon Brown. This film tracks migrations of swans and eels, butterflies and shorebirds. It is about “the fundamental rhythms that sustain and enrich North America’s greatest estuary” – the *Chesapeake Bay*.

Co-sponsored by the Nabb Center for Delmarva History and Culture.



Film at Fulton

For information: **410-543-6229**

Fulton Hall 111 – Herman van Apeldoorn Film Center

This series fosters the collective viewing and discussion of exciting films on campus. Each film is chosen for its artistic and thematic resonance and is followed by a panel discussion.

All screenings are FREE and open to the public. No tickets required.

Chicken for Linda

**Directed by Sebastien
Laudenbach & Chiara Malta**

France/Italy, 2023. Not Rated.

Sunday, February 2 • 3 p.m.

Paulette feels guilty after unjustly punishing her daughter Linda and would do anything to make it up to her. Linda immediately asks for a meal of chicken with peppers, which reminds her of the dish her father used to make. David Johnson, English/film faculty, introduces this unique visual marvel of hand-painted animation with bright, color-blocked characters and a story that is an intoxicating blend of slapstick comedy, musical and family drama.



Three Colors: Blue

Directed by Krzysztof Kieslowski

France, 1993. Rated R.

Sunday, March 2 • 3 p.m.

Jim Burton, communication/film faculty, introduces his favorite film, the first part of the “Three Colors” trilogy. Juliette Binoche gives a tour de force performance as Julie, a woman reeling from the tragic death of her husband and young daughter. But *Blue* is more than just a blistering study of grief; it’s also a tale of liberation, as Julie attempts to free herself from the past while confronting truths about the life of her late husband, a composer.



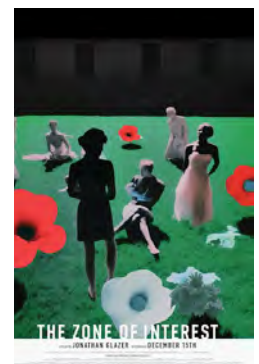
The Zone of Interest

Directed by Jonathan Glazer

U.K./Poland/U.S.A., 2023. Rated PG-13.

Sunday, April 6 • 3 p.m.

The plot of *The Zone of Interest* can be summarized in a misleadingly simple way: A24 says, “Auschwitz commandant Rudolf Höss and his wife Hedwig strive to build a dream life for their family in a house and garden beside [a concentration] camp.” This summary does little to prepare audiences for the film as revolutionary cinema: It faces the agony of the past, but with hope for humanity if audiences are willing to take it in. Fulton School Dean Maarten Pereboom and Elsie Walker, English/film faculty, co-host this screening.



Fulton Public Humanities

For information: **410-677-5070**

Reel Reflections: Film & Philosophy

Fulton Hall 111 - Herman van Apeldoorn Film Center

Can film teach us about philosophy? Can philosophy teach us about film? This series of screenings and discussions explore cinema through philosophical concepts and tie into the Philosophy Symposium's (see page 25) focus on philosophy of education.

Free and open to the public. No tickets required.

The Cremator

February 7 • 6 p.m.

Captain Fantastic

March 7 • 6 p.m.

El Sur

April 11 • 6 p.m.



Modern Languages & Intercultural Studies Department

For information: **410-543-6341**

SPANISH FILM FESTIVAL

Fulton Hall 111- Herman van Apeldoorn Film Center

Sponsored by the Modern Languages and Intercultural Studies (MDFL) Department, Fulton School of Liberal Arts, and a Spanish Film Club grant from Pragda, SPAIN arts and culture, and the Secretary of State for Culture of Spain.

Madres paralelas (Parallel Mothers)

Wednesday, February 12 • 7 p.m.

Pedro Almodóvar / Spain / 2021

Starring Penélope Cruz, Almodovar's *Parallel Mothers* is an unabashed story of cascading twists and turns and high family drama. The film is introduced by Sally Perret, MDFL faculty, and followed by a Q&A session.



Miúcha, the voice of Bossa Nova (Miúcha, The Voice of Bossa Nova)

Wednesday, February 26 • 7 p.m.

Liliane Mutti, Daniel Zarvos / Brazil, France, United States / 2022

Known as the sister of Chico Buarque, the pupil of Vinicius de Moraes, the second wife of João Gilberto, the musical partner of Antônio Carlos Jobim, and the vocal accompaniment to Stan Getz's saxophone, Miúcha was overshadowed by the male musicians in her life. Regardless, Miúcha managed to earn unprecedented success, becoming a symbol of female resilience and a musical legend forever. The film is introduced by Emily Story, history faculty, and followed by a Q&A session.



Yo no me llamo Ruben Blades (Ruben Blades Is Not My Name)

Wednesday, March 12 • 7 p.m.

Abner Benaim / Argentina, Colombia, Panama / 2018

Latin American icon Ruben Blades, whose "thinking man's salsa" has earned him praise as the Bob Dylan of Latin America, was at the center of the New York salsa revolution in the 1970s. His socially charged lyrics and explosive rhythms brought salsa music to an international audience. Blades has won 17 Grammys, acted in Hollywood, earned a law degree from Harvard and even ran for president of his native Panama. The film is introduced by Corinne Pubill, MDFL faculty, and followed by a Q&A session.



Cassandro

Thursday, April 3 • 7 p.m.

Roger Ross Williams / Mexico, United States / 2024

Based on the true story of Saúl Armendáriz, a gay amateur wrestler from El Paso, who rises to international stardom after he creates the character "Cassandro," the "Liberace of Lucha Libre." In the process, he upends not just the macho wrestling world, but also his own life. The film is introduced by Ricardo Vázquez, MDFL faculty, and followed by a Q&A session.



Boca Chica

Wednesday, April 23 • 7 p.m.

Gabriella A. Moses / Dominican Republic / 2023

Beautifully juxtaposing the realities and expectations of a young girl approaching womanhood in the Dominican Republic, *Boca Chica* shines a light on the insidious child sex trade and the lives it seeks to destroy. The film is introduced by Ethel Barja, MDFL faculty and followed by a Q&A session.



English Department

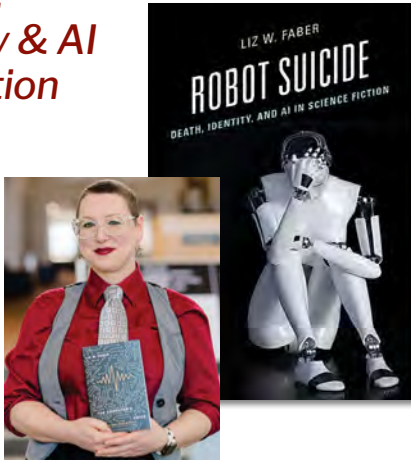
For information: **410-543-6445**

Dotterer Public Lecture In Literature *Robot Suicide: Death, Identity & AI in Science Fiction*

Liz Faber

**Thursday, April 24
7 p.m.
Conway Hall 153**

Faber discusses her recent work exploring how fictional robots hold up a mirror to our cultural perceptions about suicide and can help us rethink real-world policies regarding mental health. Ross Leasure (English) supplements the discussion, referencing texts not covered in *Robot Suicide* like Ian McEwan's *Machines Like Me* (2019).



SU Libraries & Bond Curriculum Resource Center

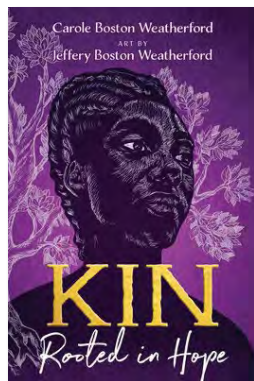
For information: salisbury.edu/libraries/crc

Annual African American Poetry Read-In Featuring Carole & Jeffery Boston Weatherford

**Wednesday, February 26 • 6 p.m.
Conway Hall, Bond Curriculum
Resource Center**

As part of SU's Black History Month celebrations, the Weatherfords are featured readers and share selections from their powerful book of poetry *KIN: Rooted in Hope*.

See full listing and sponsors in the Black History Month section on page 28.



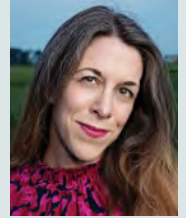
Writers on the Shore

For registration & information: **410-543-6445**

Catherine Pierce

**Wednesday, February 19 • 8 p.m.
Commons, Worcester Room**

Pierce is the Poet Laureate of Mississippi and the author of four books of poems, most recently *Danger Days*. A new poetry collection, *Dear Beast*, and an essay collection, *Foxes for Everybody*, are forthcoming in 2026. Her work has appeared in *The New York Times*, *The Best American Poetry*, the Pushcart Prize anthology, *The Nation* and elsewhere. A recipient of fellowships from the National Endowment for the Arts and the Academy of American Poets, she teaches at Mississippi State University.



Randon Billings Noble

**Wednesday, March 5 • 8 p.m.
Commons, Worcester Room**

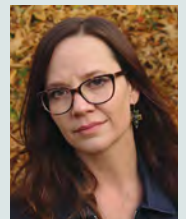
Noble is an essayist. Her collection *Be with Me Always* and her anthology of lyric essays *A Harp in the Stars* were published by Nebraska Press. Other work has appeared in the "Modern Love" column of *The New York Times*, *The Rumpus*, *Brevity* and *Creative Nonfiction*. She is the founding editor of the online literary magazine *After the Art* and teaches in West Virginia Wesleyan's Low-Residency M.F.A. Program and Goucher's M.F.A. in Nonfiction Program.



Rachel M. Hanson

**Wednesday, March 12 • 8 p.m.
Commons, Worcester Room**

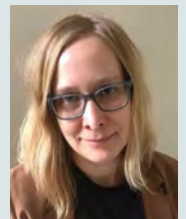
Hanson is the author of *The End of Tennessee: A Memoir*, and her nonfiction has won Best of the Net. Her work can be found in *Creative Nonfiction*, *The Iowa Review*, *Ninth Letter*, *Juked* and elsewhere. She is an assistant professor of English at the University of North Carolina - Asheville and is the executive director of the literary nonprofit organization Punch Bucket Lit.



Emily Rosko

**Wednesday, April 23 • 8 p.m.
Commons, Worcester Room**

Rosko is the author of three poetry collections: *Weather Inventions*, *Prop Rockery* and *Raw Goods Inventory*. She is the editor of *A Broken Thing: Poets on the Line* and poetry editor for *swamp pink*. She is a past recipient of the Wallace Stegner Fellowship at Stanford, the Ruth Lilly Fellowship from Poetry magazine and the Jacob K. Javits Fellowship. She teaches at the College of Charleston.



Scarab Launch

**Wednesday, April 30 • 8 p.m.
Holloway Hall, Great Hall**

SU students read selections from the newest issue of *The Scarab*, the student-run literary journal. Free copies of the issue are available. The event is hosted by this year's editor-in-chief, Donald Pasmore.

Bosserman Center for Conflict Resolution

For information: bossermancenter.com

Season of Non-Violence An Evening Featuring Members of the Gandhi & King Families

Thursday, January 30 • 6 p.m.
Guerrieri Academic Commons, Assembly Hall



This panel discussion celebrates the beginning of the "Season of Nonviolence" with Tushar Gandhi, the great-grandson of Mohandas Gandhi; Joel King, cousin of Martin Luther King Jr.; and Greg Foster, cousin of Coretta Scott King. The discussion focuses on nonviolent means of change in our modern world.



Sponsored by the Bosserman Center for Conflict Resolution and the Conflict Resolution Department.

Lessons Learned from Phil Bosserman, Fred Rogers & Janusz Korczak

Wednesday, April 2 • 6-8 p.m. • Conway Hall 152

SU alum Mark Brennan, Professor and UNESCO Chair on Global Citizenship Education for Sustainable Peace through Youth and Community Engagement at Penn State University, speaks on three influential people who championed peacebuilding and challenged others to become agents of change and peacebuilders. The multifaceted process of peacebuilding brings together scholarship, innovation and activism. This seminar explores their histories, cutting-edge research and evidence-based applications to impact children, youth and communities.



The Israeli-Palestinian Conflict: What Do Palestinians and Israelis Really Think?

Monday, April 14 • 6-8 p.m. • Conway Hall 152

What do average Palestinians and Israelis really think and want, and does it align with the media-political narratives of the conflict they live? Presenter Corey Gil-Shuster used his YouTube channel *The Ask* to trek across Israel and the West Bank of Palestine, asking the people what they think about the conflict.

Environmental Studies Colloquia

For information: **410-548-3848**

Study Abroad Experiences

Wednesday, February 5 • 7 p.m. • Henson Science Hall 243

Are you a student interested in studying abroad? Hear student stories and learn about winter term, summer term and semester-long opportunities for learning and travel!

Bridging Disciplines: Transdisciplinary Research & Teaching in the Brazilian Amazon

Tuesday, February 25 • 7 p.m. • Henson Science Hall 243

Jill Caviglia-Harris, economics and environmental studies faculty, discusses the challenges and opportunities of fostering transdisciplinary research in the Brazilian Amazon, drawing on her Fulbright experience teaching to students in Rondônia, Brazil.



A Serpent in Eden: How Chessie the Sea Monster Swallowed Kent Island

Wednesday, April 2 • 7 p.m. • Henson Science Hall, 243

In the 1970s and 1980s, waterfront communities around the Chesapeake Bay became fascinated by reports of a sea serpent known as 'Chessie' – while watermen denied the creature's existence. Eric Cheezum explores the reasons why, and what the monster's presence tells us about postwar cultural change in the region.

Co-sponsored by the Nabb Center for Delmarva History and Culture.

Migrations

Wednesday, April 30 • 7 p.m.
Guerrieri Academic Commons, Assembly Hall

Tom Horton and David Harp screen their new *Bay Journal* film, produced with collaborator Sandy Cannon Brown.

See full listing in the Literary Arts & Film section on page 20.

Changing Climate/Changing World Lecture Series: Inequalities & Sustainability

Mondays: January 27-May 19 (excluding March 17)
7-8:30 p.m. • Henson Science Hall 103

Hosted by the Fulton Sustainability Committee.

For more information contact Shawn McEntee:

sxmcentee@salisbury.edu

Adventure in Ideas: Humanities Seminar

For information: salisbury.edu/humanities-seminars

The Russia-Ukraine Conflict in Historical & Global Perspective

Saturday, February 22 • 10 a.m.- 2 p.m. • Conway Hall 179

As we mark the third anniversary of the most recent Russian invasion of Ukraine, this seminar explores the historical and global context for the conflict. SU Professor of History Gregory Ference and Fulbright Visiting Scholar Yuriy Petrushenko of Sumy State University examine the history of relations between the Ukrainian and Russian peoples, the conflict itself, and the implications of the war for the region, Europe and the world.

For information & to register: salisbury.edu/humanities-seminars • Reserve Tickets: 410-543-6229 • ciberkey@salisbury.edu

Tickets: \$30/\$50 for 2 • Continental breakfast and lunch are included.

Sponsored by the Fulton School of Liberal Arts and the Whaley Family Foundation.

Fulton Public Humanities

For information: salisbury.edu/public-humanities

Sister City International: PR

Thursday, February 27 • 7 p.m. • Conway Hall 152

Join the esteemed Tugce Ertem-Eray for a thought-provoking exploration into how public relations shapes public diplomacy. Through the lenses of regulation, production and representation within Sister City International, this lecture offers invaluable interdisciplinary insights for anyone interested in fostering global relationships, international communication and the art of diplomacy.

Co-sponsored by the Communication Department.



COVID-19 & Americans' Mental Health: A Persistent Crisis, Especially for Emerging Adults 18-29

Thursday, April 3 • 3 p.m. • Guerrieri Academic Commons, Assembly Hall

Join renowned psychologist Jeffrey Jensen Arnett as he explores the lasting mental health crisis in American adults since the COVID-19 pandemic, with emerging adults (18-29 years) especially affected. Drawing on national data from 2019 to 2024, Arnett addresses the real-life implications of rising anxiety and depression and how they impact our everyday lives. His talk highlights what we can do, both individually and collectively, to address this urgent mental health challenge.

Co-sponsored by the Psychology Department and Clarke Honors College.



Themed Entertainment in the 21st Century

Tuesday, April 8 • 7 p.m. • Conway Hall 179

Dave Cobb takes you into the world of themed entertainment, discussing his career creating theme parks (Warner Bros. World Abu Dhabi), rides (Men in Black: Alien Attack), immersive spaces (Star Trek: The Experience) and interactive board games. Learn what it takes to tell multi-media stories to a global audience.

Co-sponsored by the Communication Department.



Fulton School of Liberal Arts

For information: 410-543-6450

Fulton Faculty Colloquium

First Tuesday of the Month
3:30 p.m. • Conway Hall 152

Students, staff, faculty and community members are invited to this free showcase of Fulton faculty projects, with stimulating conversation, coffee, tea, cookies and giveaways.



■ Tuesday, February 4

Ignaciyas "Keetha" Soosaipillai (Conflict Analysis and Dispute Resolution): "Why Do Rebels Walk Away from Peace Negotiations: Negotiation Strategies of Sri Lanka's Liberation Tigers of Tamil Eelam"

Brian Polkinghorn (Conflict Analysis and Dispute Resolution): "Research Results on Worldwide Growth and Opportunity Trends Impacting Students Entering the Conflict Analysis and Intervention Field"

■ Tuesday, March 4

Michael McCarty (History and Asian Studies): "Tracing the Outbreak of a War in Medieval Japan"

Ross Leasure (English): "Seeing the Future in the Viking Age: One Sage's Saga Under [Re-] Construction"

■ Tuesday, April 1

Yuriy Petrushenko (PACE Visiting International Scholar): "Why Is Civic Reflection Important for Ukraine?"

Sarah Surak (Political Science): "You'll Never Waste Alone: A Political Theory of Garbage"

■ Tuesday, May 6

Bill Wolff (Art): "Public Art, Community and Cross-Cultural Collaboration"

Shane Hall (Environmental Studies): "War by Other Means: Environmental Violence in the 21st Century"

Institute for Public Affairs & Civic Engagement (PACE)

For information: salisbury.edu/pace

Education & Engagement in Ukraine: *Assessing the Present & Preparing for the Future*

Tuesday, February 25 • 6-7:30 p.m.

Guerrieri Academic Commons, Assembly Hall

Yuriy Petrushenko (SU 2024 Fulbright Scholar and head of the International Economic Relations Department, Sumy State University, Ukraine), Natalia Tsibuliak (associate professor, Berdiansk State Pedagogical University, Ukraine) and Brian Polkinghorn (distinguished professor and executive director of SU's Bosserman Center) discuss their experience with education and civic engagement in Ukraine since the beginning of the full-scale Russian military invasion. Eric Rittinger (Political Science Department) moderates the event.

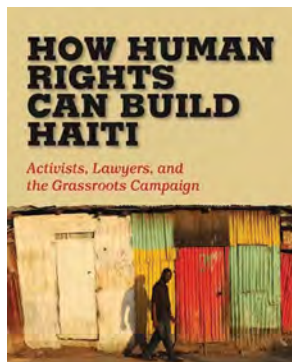
Co-sponsored by the Institute for Public Affairs and Civic Engagement (PACE), Conflict Analysis and Dispute Resolution Department, Bosserman Center, and Political Science Department.

Health, Human Rights & Migration: *The Case of Haiti*

Monday, April 14 • 6 p.m.

Guerrieri Student Union, Wicomico Room

Discussions about immigration to the U.S. often ignore how policy decisions – including U.S. foreign policy – prevent people from enforcing the basic human rights needed to remain in their home countries with a minimum of dignity and security. Featuring attorney Brian Concanon, the focus of the book *How Human Rights Can Build Haiti* explores how policy decisions can prevent the development of systems that provide public health, education, security and other necessities in vulnerable countries, which in turn force families to seek safety elsewhere. Discuss what we can all do to promote more effective responses, in the U.S. and abroad, especially in Haiti.



In partnership with Haitian Development Center of Delmarva and Wicomico County Health Department.

Modern Languages & Intercultural Studies Department

For information: **410-543-6341**

Francophone Lecture Series *Image & Myth in Sophie Deraspe's Antigone*

Tuesday, April 8 • 6:30 p.m. • Conway Hall 153

Audrey Evrard (Fordham University) explores the transposition of Sophocles' ancient Greek play to a modern-day refugee situation in Montreal. The talk includes a brief introduction by SU faculty member Arnaud Perret.

Co-sponsored by the Modern Languages and Intercultural Studies Department, the Fulton School of Liberal Arts, and the Clarke Honors College.



Nabb Center for Delmarva History & Culture

For information: salisbury.edu/libraries/nabb

Archaeology Month Lecture *Julie Markin, Director of Archaeology, Washington College*

Tuesday, April 8 • 6:30 p.m. • Conway Hall 156

Markin shares the latest regional archaeological investigations with a special focus on Native American sites.



Philosophy Department

For information: salisbury.edu/philosophy-symposium

45th Annual Philosophy Symposium *Attending to Others: Philosophical Orientations to Education*

Saturday, March 1 • 9 a.m.-3:30 p.m. • Conway Hall 153

When we are orienting our education, what should we be most attentive to? The natural world? Other cultures? Our humanity? The Philosophy Department invites Kyung-hwa Jung (Seoul National University) to discuss a philosophical orientation to courage in facing climate change and David Hansen (Teachers College, Columbia University, NY) to rethink cosmopolitanism and humanism as guides for education in our times.

BLACK HISTORY MONTH

2025 THEME: AFRICAN AMERICANS & LABOR

For information: **410-548-3586**

Black History Month Kick-Off

Friday, January 31 • 7 p.m.
Holloway Hall, Jackson Family Auditorium

Join the Office of Diversity and Inclusion and the Multicultural Alliance as they launch Black History Month with an unforgettable celebration. Experience and support the incredible Black talent within our community.

This is an event you won't want to miss!

Sponsored by the Office of Diversity and Inclusion and Multicultural Alliance.

Dining Experience: Soul Food Dinner

Friday, February 7 • 4:30 p.m. • Commons, Bistro
Tickets at the Door: \$17.25

Enjoy a menu that reflects the African American culture's innovative fusion of diverse culinary influences.

Sponsored by University Dining Services.

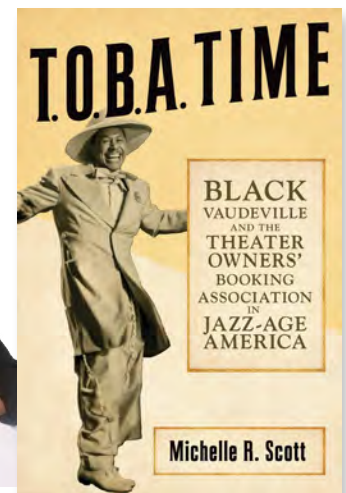
KEYNOTE LECTURE

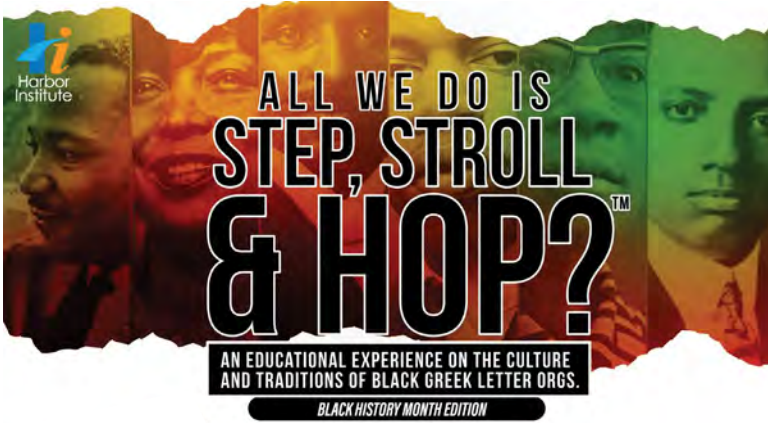
Onstage Entertainment, Off-Stage Labors: The Business of TOBA & Black Vaudeville

Thursday, February 6 • 7 p.m.
Guerrieri Student Union, Wicomico Room

Michelle Scott is a professor in the History, Africana Studies, and Gender, Women's + Sexuality departments at University of Maryland, Baltimore County and author of *TOBA Time: Black Vaudeville and the Theater Owners' Booking Association in Jazz Age America*. Scott discusses how the Black theatre industry's off-stage labor concerns evolved to combat increased national segregation. Light refreshments served.

Sponsored by the Office of Diversity and Inclusion, History Department, English Department, Student Government Association, and the Office of Cultural Affairs.





All We Do Is Step, Stroll & Hop? What Is a Black Greek?

Wednesday, February 5 • 7 p.m.
Guerrieri Student Union, Wicomico Room

Omega Psi Phi member and motivational speaker Rasheed Ali Cromwell discusses the history and culture of Black and multicultural sororities and fraternities. Although Black and multicultural Greek-letter organizations are internationally known for their step shows, Cromwell reveals their true purpose through an interactive, innovative, empowering and fun educational experience.

Sponsored by the Multicultural Alliance, National Pan-Hellenic Council, and Office of Diversity and Inclusion.

Be Color Brave, Not Color Blind Panel Discussion

Wednesday, February 12 • 7 p.m.
Guerrieri Student Union, Wicomico Room

Join members and leaders of SU student organizations for a revealing and inspiring conversation about the perils of color blindness and the importance of recognizing and celebrating ethnic and racial diversity.

Sponsored by the Multicultural Alliance, Student Government Association, and Office of Diversity and Inclusion.



Neptune Frost Film Screening & Discussion

Thursday, February 13 • 7 p.m.
Guerrieri Student Union, Wicomico Room

Watch and discuss the visually mesmerizing afro-futurist, science fiction musical film *Neptune Frost*, which touches on historical events and contemporary topics that intersect with African American labor history like the civil war in Rwanda, intersex identity, imperialism and neo-colonialism.

Sponsored by the Office of Cultural Affairs, Student Government Association and English Department.



Rosenwald Schools on the Shore Panel Discussion

Thursday, February 20 • 7 p.m.
Guerrieri Student Union, Wicomico Room

Moderated by Creston Long, director of the Edward H. Nabb Research Center for Delmarva History and Culture, Eastern Shore community members discuss the inspiring history of African Americans' collaboration with Jewish philanthropist Julius Rosenwald and African American educator Booker T. Washington to build and maintain schools for underserved African American children. Light refreshments provided.

Sponsored by Nabb Research Center, Office of Cultural Affairs, Student Government Association, and Office of Diversity and Inclusion.

For related programming on Rosenwald Schools, see the Rosenwald documentary film on page 20.



KIN: Rooted In Hope **Creative Labor in Archives Residency** **Poet & Author Carole Boston Weatherford &** **Illustrator Jeffery Boston Weatherford Residency**

Writer Carole Boston Weatherford and her son illustrator Jeffery Boston Weatherford transformed archival documents that told the deeply moving story of their family's enslavement and freedom into searing poems and stunning art in their most recent publication *KIN: Rooted in Hope*. As part of this special residency in celebration of Black History Month, the Weatherfords are featured readers at the Annual African American Poetry Read-in and present a talk on the historical research process behind the art and poetry of *KIN*, which utilized historical documents from the region in its formation.

Annual African American Poetry Read-In

Wednesday, February 26 • 6 p.m. • Conway Hall, Bond Curriculum Resource Center

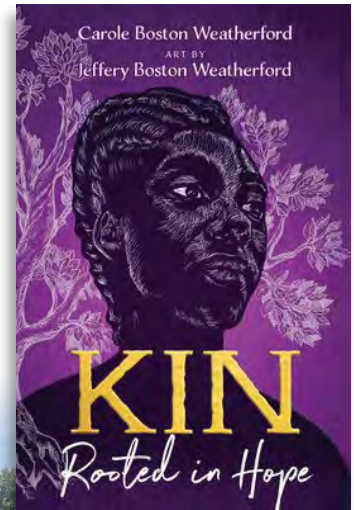
As featured readers, the Weatherfords share selections from their powerful book of poetry *KIN: Rooted in Hope*. Light refreshments provided.

Artist Talk: Transforming History into Art & Poetry

Thursday, February 27 • 5 p.m. • Guerrieri Student Union, Wicomico Room

The Weatherfords discuss their creative processes as an author and artist who used archival research to bring history alive in their most recent book *KIN: Rooted in Hope*. Creston Long, director of the Edward H. Nabb Research Center for Delmarva History and Culture, introduces them. Light refreshments provided.

Events sponsored by Fulton Public Humanities, Nabb Research Center, SU Libraries, Curriculum Resource Center, Art Department, the Office of Diversity and Inclusion, Seidel School of Education, English Department, Office of Cultural Affairs, and Student Government Association.



Asian American And Pacific Islander Heritage

Office of Diversity and Inclusion

For information: salisbury.edu/diversity

Gyotaku **Paint Night**

Tuesday, April 1
5:30-6:30 p.m.
Guerrieri Student Union,
Wicomico Room

Learn about a traditional Japanese artform called "Gyotaku." Robby Chin of SU's Office of Diversity and Inclusion, and owner of Eastern Shore Gyotaku, LLC, discusses the history and techniques of Gyotaku along with providing a guided tutorial for participants to make their own art to take home.



Buddha on the **Silver Screen**

Wednesday, March 26
6:30 p.m.
Fulton Hall 111 –
Herman van Apeldoorn
Film Center

Buddhism has fascinated film makers and lay persons for a very long time. Sharon A. Suh (professor of theology and religious studies, Seattle University) discusses the various ways race, gender and Buddhism have been portrayed in Asia and the global West. Her presentation features clips from some of the most iconic films about Buddhism.

Co-sponsored by Fulton Public Humanities.



International Women's Month

Salisbury University Women's Forum (SUWF)

For information: salisbury.edu/suwf

Eighth International Women's Day Conference *Together, Let's #Accelerate Action for Women's Equality*

Friday, March 7 • 12:30-4 p.m. • Commons, Worcester Room

'Accelerate Action' is a worldwide call to acknowledge the strategies, resources and activity that positively impact women's advancement, and to support and elevate their implementation.

This call to accelerate action could not be timelier. Many have commented on how exciting the conference's 10-minute presentations are. This exciting and fast-moving afternoon is like a tapa tasting of intellectual delights. Come for the whole afternoon or just pop in for a stimulating time.



International Women's Month Guest Lecture *Harriet Tubman, the Combahee River Raid and Black Freedom*

Edda L. Fields-Black

Thursday, March 13 • 7 p.m.
Guerrieri Student Union, Wicomico Room

Harriet Tubman's legendary life is widely known: her enslavement and the daring Underground Railroad escapes she led. But historian Edda L. Fields-Black discusses Tubman's crucial but overlooked daring Civil War exploits. Through her groundbreaking book, *COMBEE: Harriet Tubman, the Combahee River Raid, and Black Freedom during the Civil War*, she reveals the untold stories of those freed, their resilience and the lasting impact of Tubman's heroism.

Sponsored by the Office of Diversity and Inclusion, History Department, English Department, Nabb Research Center, and Office of Cultural Affairs.



Las Guaracheras Salsa Music Workshop

Tuesday, March 25 • 7 p.m.
Guerrieri Student Union,
Wicomico Room



Live Salsa Performance

Wednesday, March 26 • 7 p.m.
Holloway Hall, Jackson Family
Auditorium

Celebrate International Women's Month with Las Guaracheras – an all-women salsa sextet from Cali, Colombia.

See full listing on page 8.

Salsa

Caribbean Student Association

For information: involved.salisbury.edu/organization/caribbeanstudentassociation

Pre-Haitian Flag Day Celebration

Friday, May 9 • 5-8 p.m. • Sea Gull Square Lawn
(Rain Location: Guerrieri Student Union, Wicomico Room)

Celebrate the cultural heritage of Haiti with music, dancing, food and games at this special event presented by SU's Caribbean Student Association. Free and open to everyone on campus and in the community.



Fulton School of Liberal Arts

For information: 410-543-6450

Fulton Spring Arts Festival

Friday, May 2 • 11 a.m.-3 p.m.
Fulton Hall Fountain & Lawn
(Rain Location: Fulton Hall Lobby)

"Spring into Fulton" for the Fulton School of Liberal Arts celebration of visual and performing arts, humanities, and social sciences. This free event includes live music, dancing, art demonstrations and sales, giveaways, and more. Experience the best of our 18 academic majors, 40 minors and four graduate programs.



Counseling Center

For information: Cassidy Zeller
cezeller@salisbury.edu

Take Back the Night

Thursday, April 3 • 6 p.m.
Guerrieri Student Union, Wicomico Room

Join an evening of empowerment and support that raises awareness and works to prevent sexual violence. The event features resource tables, giveaways, a march, performances, speakers and an open mic where guests are able to speak out about their experiences.

Organized by the Take Back the Night Planning Committee.



Out of the Darkness Campus Walk

Friday, April 25 • 11 a.m.
Guerrieri Student Union, Wicomico Room

Out of the Darkness Campus Walks are the American Foundation for Suicide Prevention's (AFSP) signature event designed to engage communities in the fight to prevent suicide. Join the walk by registering at afsp.org/Salisbury. Register individually or start a team to raise funds and walk as a group. All money raised goes toward AFSP and their mission to prevent suicide.



Support the American Foundation for Suicide Prevention's mission to save lives and bring hope to those affected by suicide.

Institute for Public Affairs & Civic Engagement (PACE)

For information: salisbury.edu/pace

Planning a Lower Shore 250

Friday, February 7 • 8:30 a.m.-Noon
Guerrieri Student Union, Wicomico Room

Breakfast provided

Free registration required – For details, visit: salisbury.edu/pace

Join dozens of community organizations and campus members to help advance conversations around the Lower Shore 250, a celebration of our state's contributions to American history, against the backdrop of America's upcoming 250th anniversary. They are working under the themes of pride in the ideals of our nation's founding, reckoning with our failure to live up to those ideals and aspiration that together we can do better.

Civic Reflection Trainings

Tuesday, March 25 • 3:30-7:30 p.m.

Wednesday, March 26 • 8 a.m.-Noon

Friday, April 4 • 1-5 p.m.

Training events will be held on SU's campus in various locations. They are free and open to the public, but require pre-registration at least one week before the training date.

SCAN TO REGISTER



Join PACE for free training in leading civic reflections. Civic reflection is a conversation model that uses a shared source (such as a poem, image or film excerpt) to help groups of people think and talk more deeply about their shared world and differing values and commitments.

To learn more about Civic Reflection, visit the Center for Civic Reflection's homepage at civicreflection.org



PACE Showcase

Thursday, March 27 • 2-4 p.m.

Guerrieri Academic Commons, Assembly Hall

The PACE Showcase is a chance for our community and campus to celebrate some of the many partnerships between Maryland's Eastern Shore and SU. Learn about on-going partnerships, form new connections and meet people doing excellent public work in our area. Followed by a free pre-conference event for the Lower Shore Nonprofit Summit.

Free to campus and community. Light refreshments provided.



Lower Shore Nonprofit Summit: Together, for Good

Friday, March 28 • 8:30 a.m.-4:30 p.m.

Perdue Hall

Breakfast & lunch provided

For details, including registration fees, visit: salisbury.edu/pace

Enjoy a full day of professional learning and networking. The day will kick off with an inspiring keynote speaker, followed by a full day of educational breakout sessions and networking opportunities.

Sponsored by PACE, United Way of the Lower Eastern Shore and Community Foundation of the Eastern Shore.

Office of Diversity & Inclusion

For information & details: salisbury.edu/diversity

Multicultural Festival

Wednesday, April 30 • 3-6 p.m.
Guerrieri Student Union, Wicomico Room

Celebrate the diverse tapestry that makes up SU. Enjoy live music, a variety of free cultural food and prizes, and meet members of SU's student clubs and organizations. Free and open to the public. Community members, students, faculty and staff are welcome.



Office of Undergraduate Research & Creative Activity (OURCA)

For information: [410-546-1674](tel:410-546-1674)

Salisbury University Student Research Conference (SUSRC)

Friday, April 25 • 12:30-7:30 p.m.
Guerrieri Academic Commons, Assembly Hall

Learn more: salisbury.edu/susrc

This event showcases student research and creative activities conducted across campus as oral presentations, panel discussions and a poster session. Those interested in research and creative activities are strongly encouraged to attend.



Shore Hatchery Competition

For registration & information:
shorehatchery.salisbury.edu

REGISTRATION OPENS:
Monday, February 3
12:01 a.m.

REGISTRATION CLOSES:
Monday, March 10
11:59 p.m.

COMPETITION DATE:
Friday, April 25



The Philip E. and Carole R. Ratcliffe Foundation Shore Hatchery is a bi-annual Mid-Atlantic startup competition. The 13-year, \$2.9 million initiative began in 2013. Startups apply for a share of \$200,000 annually. The program's goal is to foster new businesses and jobs, aiming to benefit the region within three years.



Summer Enrichment Academies

For information: salisbury.edu/sea

SUMMER SESSIONS: June 23-August 15

REGISTRATION OPENS: Monday, March 3

SU's Summer Enrichment Academies (SEAs) once again offer educational programs for students in grades K to 12 for summer 2025. The one- or two-week academies provide an opportunity for students to participate in half- or full-day activities centered around the arts, science, leadership, health and communication.



Art Department

For information: llwest@salisbury.edu or wawolff@salisbury.edu

Sixth Annual Metal Menagerie

May 8-September 7 • Salisbury Zoo

Opening Reception: Thursday, May 8 • 4-6 p.m.

Salisbury University students, staff and faculty display their metal works during the exhibition "Metal Menagerie" at the Salisbury Zoo.



Fulton Feature Friday

For information: **410-548-3586**

Salisbury University in Downtown Salisbury

Select Fridays

Mogan's Oyster House in the Pearl Room

100 E. Main Street, Suite 111

Doors Open 5 p.m. • Show Starts 6 p.m.

Free and Open to the Public, All Ages, No Tickets Required

This monthly series features music from SU faculty, staff and friends.



Blarney Pilgrims

March 14

Celebrate St. Patrick's Day weekend with the Blarney Pilgrims, featuring Meri Holden on violin, Andy Dowell on flute, and Brad Stevens on hammered dulcimer, mandolin, octave mandolin and Celtic harp. Playing traditional and modern Celtic and American folk music, this mostly instrumental concert features a few sing-a-longs, so come prepared to raise your voice and your glass!

Todd Smith & Friends

February 21

Smith and his friends perform blues and rock-n-roll classics made famous by artists such as Howlin' Wolf, Muddy Waters, Little Walter, Junior Wells and others. Smith has been performing music since 1985 with various artists and has opened for and shared the stage with such acts as Little Feat, John Hiatt, James McMurtry, Shawn Mullins, Yes and more.



Louise Anderson & Diana Wagner

2 Women. 17 Instruments. What Could Go Wrong?!

April 11

Anderson and Wagner have merged their musical interests to create a wide-ranging harmonic journey using instruments from bass ukulele to banjo to harmonica and clarinet, as they take you from 19th century string bands to love songs of the 1920s and original compositions.

Institute of Retired Persons

For information: salisbury.edu/irp

Weekly Tuesday Meeting

2 p.m. • MAC Center • 909 Progress Circle, Salisbury

Targeted for adults aged 50 and above, the IRP has regular meetings every Tuesday at the MAC Center and offers programs that include a speaker series, kayaking, hiking and biking excursions. Membership is open to all at a small yearly fee.

Modern Languages & Intercultural Studies Department

For information: [410-543-6341](tel:410-543-6341)

Community Conversation Hours in Spanish: 🌐

Tuesdays: February 11-March 11 and April 1-29 • 5 p.m.
Hoppers • 1400 S. Salisbury Blvd. #6

This spring, organizers provide practice for the intermediate and advanced levels only with the help of Associate Professor Sally Perret and student worker Felipe Astorga.

Philosophy Department

For information: [410-677-5070](tel:410-677-5070)

Philosophy Café

Saturdays: February 8, March 8, April 12, May 10
9:30-11 a.m.

Newton Street Community Center
306 Newton Street, Salisbury

The Philosophy Café meets once a month during the school year, with a new question for every session. A friendly space for exploring diverse viewpoints, the Café aims to facilitate genuine dialogue, mutual understanding and self-reflection among the Salisbury community. Sessions are moderated by SU Philosophy Department faculty. Free and open to the public.



Museum of Eastern Shore Culture

For information & details: [410 677 0232](tel:410-677-0232) • museumofeasternshorecultureatsu.org

Patrick Henry: *Reflections on Home*

January 17-March 31 • Tuesday-Saturday • 11 a.m.- 4 p.m.
218 West Main St.

Opening Reception: Friday, January 17 • 5-7 p.m.

Artist Talk: Wednesday, January 22 • 6-8 p.m.

Local painter Patrick Henry has gained a reputation as one of the Shore's most influential artists. Born and raised just west of Ocean City, the natural backdrop of land and sea fueled his curious nature as a child. As an astute observer, he honed in on the intimate corners of this personal experience in relationship to the natural world. Decades later, his most recent series of paintings, "Reflections on Home," seeks to capture the romantic and nostalgic essence of a life spent navigating this landscape.



JANUARY 2025

SUNDAY	MONDAY	TUESDAY	WEDNESDAY	THURSDAY	FRIDAY	SATURDAY
			1	2	3	4
5	6	7	8	9	10	11
12	13	14	15	16	17 EXH: Patrick Henry: Reflections on Home Opening Reception, 5-7p.m., MESC, p. 34	18
19	20	21	22 Artist Talk: Patrick Henry: Reflections on Home, 6-8 p.m., MESC, p. 34	23	24 January 24-March 29, EXH: Climate Stories, DG, p.16 January 24-February 28, EXH: Laura West, CH128, p.17	25
26	27 EXH: Aerial Photo, GAC, Thompson Gallery, p.19 EXH: OLAS Building Bridges, GAC, p.19 Changing Climate Lecture Series, 7 p.m., HS103, p. 23	28 IRP Meeting (every Tues.) MAC Ctr., 2 p.m., p. 33	29 FILM: Rosenwald, 7 p.m., FH111, p. 20	30 Season of Non-Violence, 6-9 p.m., AH, p. 23	31 Black History Kick-Off, 7 p.m., JFA p. 26 EXH & Reception: Electric Liquid, 5-7 p.m., UG, p.17	

■ PERFORMING ARTS
 ■ VISUAL ARTS & EXHIBITIONS
 ■ LITERARY ARTS & FILM
 ■ LECTURES, SEMINARS, SYMPOSIUMS
 ■ HERITAGE MONTH EVENTS
 ■ FESTIVALS & SPECIAL EVENTS
 ■ SU AROUND TOWN

CALENDAR ABBREVIATIONS

EXH: Exhibition
 LEC: Lecture
 SYM: Symposium
 FCQ: Fulton Faculty Colloquium
 ENCQ: Environmental Studies Colloquia
 MESC: Museum of Eastern Shore Culture

FPH: Fulton Public Humanities
 AHS: Adventures in Humanities Seminar
 IRP: Institute of Retired Persons
 JCMS: Peter & Judy Jackson Chamber Music Series
 JFA: Holloway Hall, Jackson Family Auditorium
 GH: Holloway Hall, Great Hall

SR: Holloway Hall, Social Room
 BB: Fulton Hall, Black Box Theatre
 CW: Commons, Worcester Room
 CH: Conway Hall
 FH: Fulton Hall
 PH: Perdue Hall

HS: Henson Science Hall
 UG: Fulton Hall, University Gallery
 DG: Downtown Gallery
 GAC: Guerrieri Academic Commons
 AH: Guerrieri Academic Commons, Assembly Hall
 GSU: Guerrieri Student Union

Scan here for a FREE visitor parking pass:



FEBRUARY 2025



SUNDAY MONDAY TUESDAY WEDNESDAY THURSDAY FRIDAY SATURDAY

						1
2 FULTON FILM: <i>Chicken for Linda</i> , 3 p.m., FH111, p. 20	3 Shore Hatchery Registration Opens, 12:01 a.m., p. 32 Changing Climate Lecture Series, 7 p.m., HS103, p. 23 February 3-March 6, EXH: Tori Teiger, Painting, GSU, p. 18	4 FCQ: Soosaipillai & Polkinghorn, 3:30 p.m., CH152, p. 24	5 EXH: OLAS Building Bridges, Reception & Discussion, 4:30 p.m., GAC, p.19 ENCQ: Study Abroad Experiences, 7 p.m., HS243, p. 23 What Is a Black Greek? 7 p.m., GSU, Wicomico Rm., p.27	6 Laura West Closing Recept., 5-7 p.m., CH128, p.17 LEC: Onstage Entertainment, 7 p.m., GSU, Wicomico Rm., p. 26	7 PHIL/FILM: <i>The Cremator</i> , 6 p.m., FH111, p. 21 Soul Food Dinner, 4:30 p.m., Commons Bistro, p. 26 Planning a Lower Shore 250, 8:30 a.m.-Noon, GSU, Wicomico Rm, p. 31	8 Philosophy Café, 9:30-11 a.m., Newton Comm. Ctr., p. 34
9	10 Changing Climate Lecture Series, 7 p.m., HS103, p. 23 Spanish Conversation Hours, 5 p.m., Hoppers, p. 34	11	12 SPAN FILM: <i>Madres paralelas</i> , 7 p.m., FH111, p. 21 Leonard Fu Concert, 7:30 p.m., GH, p.10 Be Color Brave, Not Color Blind, 7 p.m., GSU, Wicomico Rm., p. 27	13 Neptune Frost, 7 p.m., GSU, Wicomico Rm., p. 27	14	15
16	17 Dynasty Battles Concert, 7 p.m., JFA, p. 6 Changing Climate Lecture Series, 7 p.m., HS103, p. 23	18 Spanish Conversation Hours, 5 p.m., Hoppers, p. 34	19 Singers Showcase, 7:30 p.m., GH, p.10 WOS: Catherine Pierce, 8 p.m., CW, p. 22	20 ART TALK: Lynn Cazabon 5:30 p.m., DG, p.16 PANEL: Rosenwald Schools, 7 p.m., GSU, Wicomico Rm., p. 27	21 Climate Stories Reception, 5-7 p.m., DG, p.16 FFF: Todd Smith, 6 p.m., Mogan's Oyster House, p. 33	22 Adventures in Ideas, 10 a.m.-2 p.m., CH179, p. 24
23	24 Changing Climate Lecture Series, 7 p.m., HS103, p. 23	25 Spanish Conversation Hours, 5 p.m., Hoppers, p. 34 Education/Engagement in Ukraine, 6-7:30 p.m., GAC, Assembly Hall, p. 25 LEC: Bridging Disciplines in the Brazilian Amazon, 7 p.m., HS243, p. 23	26 SPAN FILM: <i>Miúcha, The Voice of Bossa Nova</i> , 7 p.m., FH111, p. 21 African American Poetry Read-In, 6 p.m., CH, CRC, p. 28 Allegheny Ensemble, 7:30 p.m., GH, p.10	27 ART TALK: Carole Boston Weatherford & Jeffrey Boston Weatherford, 5 p.m., GSU, Wicomico Rm., p. 28 Sister City Intl: PR, 7 p.m., CH152, p. 24	28	

■ PERFORMING ARTS
 ■ VISUAL ARTS & EXHIBITIONS
 ■ LITERARY ARTS & FILM
 ■ LECTURES, SEMINARS, SYMPOSIUMS
 ■ HERITAGE MONTH EVENTS
 ■ FESTIVALS & SPECIAL EVENTS
 ■ SU AROUND TOWN

CALENDAR ABBREVIATIONS

EXH: Exhibition
 LEC: Lecture
 SYM: Symposium
 FCQ: Fulton Faculty Colloquium
 ENCQ: Environmental Studies Colloquia
 MESCC: Museum of Eastern Shore Culture

FPH: Fulton Public Humanities
 AHS: Adventures in Humanities Seminar
 IRP: Institute of Retired Persons
 JCMS: Peter & Judy Jackson Chamber Music Series
 JFA: Holloway Hall, Jackson Family Auditorium
 GH: Holloway Hall, Great Hall

SR: Holloway Hall, Social Room
 BB: Fulton Hall, Black Box Theatre
 CW: Commons, Worcester Room
 CH: Conway Hall
 FH: Fulton Hall
 PH: Perdue Hall

HS: Henson Science Hall
 UG: Fulton Hall, University Gallery
 DG: Downtown Gallery
 GAC: Guerrieri Academic Commons
 AH: Guerrieri Academic Commons, Assembly Hall
 GSU: Guerrieri Student Union

Scan here for a FREE visitor parking pass:



MARCH 2025



SUNDAY

MONDAY

TUESDAY

WEDNESDAY

THURSDAY

FRIDAY

SATURDAY

						<p>1</p> <p>Philosophy Symposium, 9 a.m. -3:30 p.m., CH153, p. 25</p> <p>Furia Flamenca, 7 p.m., JFA, p. 7</p>
<p>2</p> <p>FULTON FILM: Three Colors: Blue, 3 p.m., FH111, p. 20</p> <p>Celebration of Great Composers, 3 & 5 p.m., GH, p.10</p>	<p>3</p> <p>Summer Enrichment Academies Registration Opens p. 32</p> <p>Changing Climate Lecture Series, 7 p.m., HS103, p. 23</p>	<p>4</p> <p>FCQ: McCarty & Leasure, 3:30 p.m., CH152, p. 24</p> <p>Spanish Conversation Hours, 5 p.m., Hoppers, p. 34</p> <p>Salsa Dance Lesson, 7 p.m., JFA, p. 8</p>	<p>5</p> <p>WOS: Randon Billings Noble, 8 p.m., CW, p. 22</p> <p>Storytelling for Climate Change, 5:30 p.m., DG, p.16</p>	<p>6</p> <p>Theatre, Head Over Heels, 7:30 p.m., BB, p.14</p> <p>March 7-April 3 EXH: Isabel Wells Painting, GSU, p.18</p>	<p>7</p> <p>Int'l Women's Conf, 12:30-4 p.m., CW, p. 29</p> <p>Theatre, Head Over Heels, 7:30 p.m., BB, p.14</p> <p>PHIL/FILM: Captain Fantastic, 6 p.m., FH111, p. 21</p> <p>SSO, Family Concert: Puppet Paradise, 7:30 p.m., JFA, p.13</p>	<p>8</p> <p>Theatre, Head Over Heels, 7:30 p.m., BB, p.14</p> <p>Philosophy Café, 9:30-11 a.m., Newton Comm. Ctr., p. 34</p>
<p>9</p> <p>Theatre, Head Over Heels, 2 p.m., BB, p.14</p>	<p>10</p> <p>Cia Armorial Concert, 7 p.m., GH, p.7</p> <p>Changing Climate Lecture Series, 7 p.m., HS103, p. 23</p> <p>Shore Hatchery Registration Closes, 11:59 p.m., p. 32</p>	<p>11</p> <p>Spanish Conversation Hours, 5 p.m., Hoppers, p. 34</p> <p>Salsa Dance Lesson, 7 p.m., JFA, p. 7</p>	<p>12</p> <p>SPAN FILM: Yo no me llamo Ruben Blades, 7 p.m., FH111, p. 21</p> <p>WOS: Rachel M. Hanson, 8 p.m., CW, p. 22</p>	<p>13</p> <p>Manuel Barrueco Concert, 7 p.m., JFA, p. 6</p> <p>Edda Fields-Black Women's Month Guest Lecture, 7 p.m., GSU, Wicomico Room, p. 29</p>	<p>14</p> <p>Blarney Pilgrims, 6 p.m., Mogan's Oyster House, p. 33</p>	<p>15</p>
<p>16</p>	<p>17</p>	<p>18</p>	<p>19</p>	<p>20</p>	<p>21</p>	<p>22</p>
<p>23</p>	<p>24</p> <p>Changing Climate Lecture Series, 7 p.m., HS103, p. 23</p>	<p>25</p> <p>Salsa Music Workshop, 7 p.m., GSU, Wicomico Rm., p. 8</p> <p>Civic Reflection Training, 3:30-7:30 p.m., p. 31</p>	<p>26</p> <p>Civic Reflection Training 8 a.m.-Noon, p. 31</p> <p>Las Guaracheras Concert, 7 p.m., JFA, p. 8</p> <p>Buddha on the Silver Screen, 6:30 p.m., FH111, p. 28</p>	<p>27</p> <p>ART TALK: Lionel Frazier White III, 5:30 p.m., CH156, p.16</p> <p>PACE Showcase, 2-4 p.m., AH, p. 31</p>	<p>28</p> <p>Chris English Blues, 7:30 p.m., BB, p.11</p> <p>Nonprofit Summit, 8:30 a.m.-4:30 p.m., PH, p. 31</p>	<p>29</p> <p>Wicomico River Stories, 1 p.m., DG, p.16</p>
<p>30</p>	<p>31 Changing Climate Lecture Series, 7 p.m., HS103, p.23</p>					

■ PERFORMING ARTS
 ■ VISUAL ARTS & EXHIBITIONS
 ■ LITERARY ARTS & FILM
 ■ LECTURES, SEMINARS, SYMPOSIUMS
 ■ HERITAGE MONTH EVENTS
 ■ FESTIVALS & SPECIAL EVENTS
 ■ SU AROUND TOWN

CALENDAR ABBREVIATIONS

EXH: Exhibition
 LEC: Lecture
 SYM: Symposium
 FCQ: Fulton Faculty Colloquium
 ENCQ: Environmental Studies Colloquia
 MESC: Museum of Eastern Shore Culture

FPH: Fulton Public Humanities
 AHS: Adventures in Humanities Seminar
 IRP: Institute of Retired Persons
 JCMS: Peter & Judy Jackson Chamber Music Series
 JFA: Holloway Hall, Jackson Family Auditorium
 GH: Holloway Hall, Great Hall

SR: Holloway Hall, Social Room
 BB: Fulton Hall, Black Box Theatre
 CW: Commons, Worcester Room
 CH: Conway Hall
 FH: Fulton Hall
 PH: Perdue Hall

HS: Henson Science Hall
 UG: Fulton Hall, University Gallery
 DG: Downtown Gallery
 GAC: Guerrieri Academic Commons
 AH: Guerrieri Academic Commons, Assembly Hall
 GSU: Guerrieri Student Union

Scan here for a FREE visitor parking pass:



APRIL 2025

SUNDAY	MONDAY	TUESDAY	WEDNESDAY	THURSDAY	FRIDAY	SATURDAY
		1 FCQ: Petrushenko & Surak, 3:30 p.m., CH152, p. 24 Spanish Conversation Hours, 5 p.m., Hoppers, p. 34 Gytaku Paint Night, 5:30-6:30 p.m., GSU, Wicomico Rm., p. 28 Jackson Chamber Series: ASH Trio, 7 p.m., GH, p. 9	2 SEMINAR: Mark Brennan 6 p.m., CH152, p. 23 A Serpent in Eden, 7 p.m., HS243, p. 23 Brass & Woodwinds Ensemble, 7:30 p.m., GH, p.11	3 SPAN FILM: <i>Cassandro</i> , 7 p.m., FH111, p. 21 ART TALK: Libby Rowe, 5:30 p.m., CH156, p.17 COVID-19 & Mental Health, 3 p.m., AH, p. 24 Take Back the Night, 6 p.m., GSU, Wicomico Rm., p. 30	4 Civic Reflection Training, 1-5 p.m., p. 31 April 4-May 9, EXH: Kara Jordan Painting, GSU, p.18 SU Dance Company, 7:30 p.m., BB, p.15	5 SU Dance Company, 7:30 p.m., BB, p. 24 Symphony 21, 7 p.m., JFA, p. 7
6 FULTON FILM: <i>The Zone of Interest</i> , 3 p.m., FH111, p. 20 SU Dance Company, 2 p.m., BB, p.15	7 Changing Climate Lecture Series, 7 p.m., HS103, p. 23	8 Spanish Conversation Hours, 5 p.m., Hoppers, p. 34 Francophone Lecture, 6:30 p.m., CH153, p. 25 Themed Entertainment in the 21st Century, 7 p.m., CH179, p. 24 LEC: Archaeology: Julie Markin, 6:30 p.m., CH156, p. 25	9 Faculty & Friends, 7:30 p.m., GH, p.11	10 Dance on Screen, 7 p.m., GH, p.15	11 PHIL/FILM: <i>El Sur</i> , 6 p.m., FH111, p. 21 FFF: Louise Anderson & Diana Wagner, 6 p.m., Mogan's, p. 33 Salisbury Dance Fest Meet & Greet, 7 p.m., GH, p.15	12 D. Spaulding & the Den Dogs, 7:30 p.m., CH318, p. 9 Salisbury Dance Festival, 7:30 p.m., JFA, p.15 SU Flute Day, 8:30 a.m.-4:30 p.m., FH112, p.11 Philosophy Café, 9:30-11 a.m., Newton Comm. Ctr., p. 34
13 Salisbury Dance Festival, 2 p.m., JFA, p.15	14 April 14 - May 13, Senior Exhibition: Fine Arts & Graphic Design, UG & DG, p.17 LEC: The Israeli-Palestinian Conflict, 6 p.m., CH152, p. 23 The Case of Haiti, 6 p.m., GSU, Wicomico Rm., p. 25 Changing Climate Lecture Series, 7 p.m., HS103, p. 23	15 Spanish Conversation Hours, 5 p.m., Hoppers, p. 34	16	17 Percussion Ensemble, 7:30 p.m., JFA, p.11	18 Fine Arts Awards Reception, 5-7 p.m., DG, p.17 World Drum Ensemble, 7:30 p.m., JFA, p.11	19
20	21 Changing Climate Lecture Series, 7 p.m., HS103, p. 23	22 Spanish Conversation Hours, 5 p.m., Hoppers, p. 34	23 SPAN FILM: <i>Boca Chica</i> , 7 p.m., FH111, p. 21 WOS: Emily Rosko, 8 p.m., CW, p. 22	24 LECTURE: Liz Faber: <i>Robot Suicide</i> , 7 p.m., CH153, p. 22	25 OURCA Student Research Conf., 12:30-7:30 p.m., AH, p. 32 Out of the Darkness Walk, 11 a.m., GSU, Wicomico Rm., p. 30 Piano & Strings Recital, 2 p.m., GH, p.12 Graphic Design Awards Reception, 5-7 p.m., UG, p.17	26
27 Trenelle Dashiell & Hunter Ness Recital, 7:30 p.m., GH, p.12	28 Changing Climate Lecture Series, 7 p.m., HS103, p. 23	29 Spanish Conversation Hours, 5 p.m., Hoppers, p. 34 Jackson Chamber Series: Duo Sorolla, 7 p.m., GH, p. 9	30 WOS: Scarab Launch, 8 p.m., GH., p. 22 ENV FILM: <i>Migrations</i> , 7 p.m., AH, p. 20 Multicultural Festival, 3-6 p.m., GSU, Wicomico Rm., p. 32		Shore Hatchery Competition, Junior Achievement, p. 32	

■ PERFORMING ARTS
 ■ VISUAL ARTS & EXHIBITIONS
 ■ LITERARY ARTS & FILM
 ■ LECTURES, SEMINARS, SYMPOSIUMS
 ■ HERITAGE MONTH EVENTS
 ■ FESTIVALS & SPECIAL EVENTS
 ■ SU AROUND TOWN

CALENDAR ABBREVIATIONS

EXH: Exhibition
 LEC: Lecture
 SYM: Symposium
 FCQ: Fulton Faculty Colloquium
 ENCQ: Environmental Studies Colloquia
 MESC: Museum of Eastern Shore Culture

FPH: Fulton Public Humanities
 AHS: Adventures in Humanities Seminar
 IRP: Institute of Retired Persons
 JCMS: Peter & Judy Jackson Chamber Music Series
 JFA: Holloway Hall, Jackson Family Auditorium
 GH: Holloway Hall, Great Hall

SR: Holloway Hall, Social Room
 BB: Fulton Hall, Black Box Theatre
 CW: Commons, Worcester Room
 CH: Conway Hall
 FH: Fulton Hall
 PH: Perdue Hall

HS: Henson Science Hall
 UG: Fulton Hall, University Gallery
 DG: Downtown Gallery
 GAC: Guerrieri Academic Commons
 AH: Guerrieri Academic Commons, Assembly Hall
 GSU: Guerrieri Student Union

Scan here for a FREE visitor parking pass:



MAY 2025

SUNDAY	MONDAY	TUESDAY	WEDNESDAY	THURSDAY	FRIDAY	SATURDAY
				1 Jazz Ensemble, 7:30 p.m., JFA, p. 12 Theatre: Heroes of the Fourth Turning, 7:30 p.m., BB, p.14	2 Fulton Spring Arts Festival, 11 a.m.-3 p.m., Fulton Lawn, p. 30 Theatre: Heroes of the Fourth Turning, 7:30 p.m., BB, p.14	3 Salisbury & University Chorales, 7:30 p.m., JFA, p.12 Theatre: Heroes of the Fourth Turning, 7:30 p.m., BB, p.14
4 Flute Ensemble, 2 p.m., GH, p.12 Theatre: Heroes of the Fourth Turning, 2 p.m., BB, p.14	5 Changing Climate Lecture Series, 7 p.m., HS103, p. 23	6 FCQ: Wolff & Hall, 3:30 p.m., CH152, p. 24 Salisbury Pops, 7:30 p.m., JFA, p.12	7	8 Metal Menagerie Opening Reception, Salisbury Zoo, 4-6 p.m., p. 33	9 Pre-Haitian Flag Day Celebration, 5 p.m., Sea Gull Square, p. 30	10 Philosophy Café, 9:30-11 a.m., Newton Comm. Ctr., p. 34 SSO: Symphony Pops, 7:30 p.m., JFA, p.13
11 Recital: Hannah Piasecki, Clarinet, 7:30 p.m., GH, p.12	12 Changing Climate Lecture Series, 7 p.m., HS103, p. 23	13 PRESTO Concerts, 5 & 7 p.m., GH, p.12	14	15 Salisbury Youth Orchestra, 7:30 p.m., JFA, p.13	16	17
18	19 Changing Climate Lecture Series, 7 p.m., HS103, p. 23	20	21	22	23	24
25	26	27	28	29	30	31

■ PERFORMING ARTS
 ■ VISUAL ARTS & EXHIBITIONS
 ■ LITERARY ARTS & FILM
 ■ LECTURES, SEMINARS, SYMPOSIUMS
 ■ HERITAGE MONTH EVENTS
 ■ FESTIVALS & SPECIAL EVENTS
 ■ SU AROUND TOWN

CALENDAR ABBREVIATIONS

EXH: Exhibition
 LEC: Lecture
 SYM: Symposium
 FCQ: Fulton Faculty Colloquium
 ENCQ: Environmental Studies Colloquia
 MESC: Museum of Eastern Shore Culture

FPH: Fulton Public Humanities
 AHS: Adventures in Humanities Seminar
 IRP: Institute of Retired Persons
 JCMS: Peter & Judy Jackson Chamber Music Series
 JFA: Holloway Hall, Jackson Family Auditorium
 GH: Holloway Hall, Great Hall

SR: Holloway Hall, Social Room
 BB: Fulton Hall, Black Box Theatre
 CW: Commons, Worcester Room
 CH: Conway Hall
 FH: Fulton Hall
 PH: Perdue Hall

HS: Henson Science Hall
 UG: Fulton Hall, University Gallery
 DG: Downtown Gallery
 GAC: Guerrieri Academic Commons
 AH: Guerrieri Academic Commons, Assembly Hall
 GSU: Guerrieri Student Union

Scan here for a FREE visitor parking pass:





Fulton School of Liberal Arts
1101 Camden Avenue
Salisbury, MD 21801

For questions or to update your
mailing address, please email:
culturalaffairs@salisbury.edu



PETER AND JUDY JACKSON
CHAMBER MUSIC SERIES:

DUO SOROLLA 🌞

Tuesday, April 29 • 7 p.m.

See page 9 for details.