

# PANORAMA

A Cultural Events Publication  
of Salisbury University  
SPRING 2019



## The Kraken Quartet

A massive force of  
percussion and electronics  
p. 16

**The Living Art  
of Islamic Calligraphy**  
Reflect on the history and  
current state of Islamic  
calligraphy • p. 18



**Photographic Innovation  
and the Delmarva Peninsula**  
Art historian Kruglinski  
discusses the evolution of  
photography • p. 17

## A Practiced Eye: Robert Hines

The Ward Museum honors  
Hines' legacy as both  
an artist and a steward  
of nature • p. 9



# welcome

## A Message from the President

The Tibetan Monks are returning to Salisbury University! I've heard about this wonderful opportunity to watch the creation of a sand mandala on our campus, and I'm excited that it is happening just a few steps away from my office in Holloway Hall. I know I'll be taking a break from time to time to check its progress, and I hope you make time in your schedule as well.



We begin our semester in February with our annual African American History month celebration, featuring several thought-provoking lectures and our Soul Food Dinner. In March, Women's History Month is observed with the SU Women's Forum International Women's Day Conference,

Seeking Justice, Balancing the Scales, and the Fulton Public Humanities lecture on "British Women Spies of World War II."

Our Department of Music, Theatre and Dance has a busy April with its annual percussion festival, Bobbi Biron Theatre's *Peter and the Starcatcher*, and the SU Dance Company's Spring Concert, among other performances. April is a busy month for me as well; I hope you will join me and the campus community for my inauguration as SU's president.

I'm also looking forward to my first Ward World Championship Wildfowl Carving Competition and Art Festival in Ocean City. I've heard about the world-class carvers who compete and am looking forward to seeing their life-like creations. In addition to this contest featuring one of the oldest forms of folk art, visual arts on campus and downtown abound thanks to the Nabb Research Center and SU Art Galleries, which hosts several exciting exhibits, including several highlighting our very talented faculty and their students.



These are just a few of the many events I hope you'll add to your calendar. The Salisbury Symphony Orchestra, Center for Extended and Lifelong Learning classes, the Jackson Chamber Music Festival, the Changing Climate/Changing World lecture series – all this and more await you at SU. Take your pick of our offerings in *Panorama*, and I look forward to seeing you in the audience!

A handwritten signature in black ink, appearing to read "Charles A. Wight".

Charles A. Wight  
President, Salisbury University



# SPRING SEMESTER CULTURAL SERIES

In spring 2019, Salisbury University continues exploring the collaboration between art and science, which has the potential to create new knowledge and ideas beneficial to all. When intersecting, they open up new ways of seeing, experiencing and interpreting the world around us.

We begin our exploration with Bridgman Packer Dance, recipient of a 2017 New York Dance and Performance Award (The Bessies) for innovative mastery of "Video Partnering" work – the integration of live performance and video technology.

*Frogz!* put Imago Theatre on the international map, combining masks, dance and slapstick with witty social commentary on the human condition. *The New York Times* raved: "A mastery of mime, dance and acrobatics."

For the seventh time, the Tibetan monks from the famed Drepung Loseling Monastery are in residence at SU creating, with geometric shapes and thousands of grains of colored sand, an exquisite 5-foot mandala. The residency also features lectures, a lecture/demo on monastic life and a community mandala, allowing guests to experience the mandala creation process.

2017 Grammy Award-winning *The Crossing* is a professional chamber choir dedicated to new music. The evening features David Lang's Pulitzer Prize-winning *The Little Match Girl Passion*. The work has been described as "exquisite" by *The New York Times*.

In honor of African American History Month, the Lift Me Up! Mid-Atlantic Gospel Masters Tour features the Legendary Ingramettes and the Northern Kentucky Brotherhood Singers. This roof-raising program showcases gospel music traditions with commanding, spirit-filled performances that demonstrate the extraordinary depth of talent in American gospel music.

Other offerings include the Bridges to the World International Film Series and the Jackson Chamber Music Festival, featuring the Morgenstern Trio and the Russian String Orchestra, bringing its trademark virtuosity, high energy and warmth.

Join us for a demonstration of Chinese puppetry, Brazilian pianist André Mehmari and more.



Imago Theatre's Frogz! • p. 7



Chinese Puppet Workshop • p. 14

**Explore Our Beautiful Campus:** Of course we want you to attend our amazing cultural events, but we also invite you to visit our campus and just explore! SU is quickly amassing a collection of accolades for its beautiful grounds. Most recently, travel website Expedia naming SU among the "Most Beautiful College Campuses."

**Almost Everything Is Free:** SU is proud that most of our cultural offerings are free and open to the public. For events where a large audience is anticipated, attendees may be asked to pick up a free ticket in advance to ensure their seat, look for the **A** symbol. For those events that do require an admission, look for the **\$** symbol and turn to pages 29-30 for ticket information.



60th Bi-Annual Senior Exhibitions: Fine Arts • p. 19

**All the Details:** Looking for locations, contact phone numbers, websites or admission costs? You'll find it all in one place. Turn to pages 27-30 and find this information organized by event sponsor.

**Cultural Series Contact:** If you see this symbol at the end of the event description, that means the event is sponsored by the Cultural Affairs Office and you can get more information on these events by calling **410-543-6271**.

**Events Can Change:** As always, everything is subject to change. Visit the SU website for the press releases that include details about the event and the latest time, date and location information: **www.salisbury.edu**.



PRESTO Recitals • p.25

# january

## ONGOING

**Delmarva: People, Place & Time**  
Guerrieri Academic Commons,  
Niemann Gallery  
Open During Nabb Center  
Hours

NABB CENTER EXHIBIT: This self-guided exhibit highlights various aspects of Delmarva history, including Native Americans and early settlers, agriculture and water, military contributions, and an early 19th-century home.

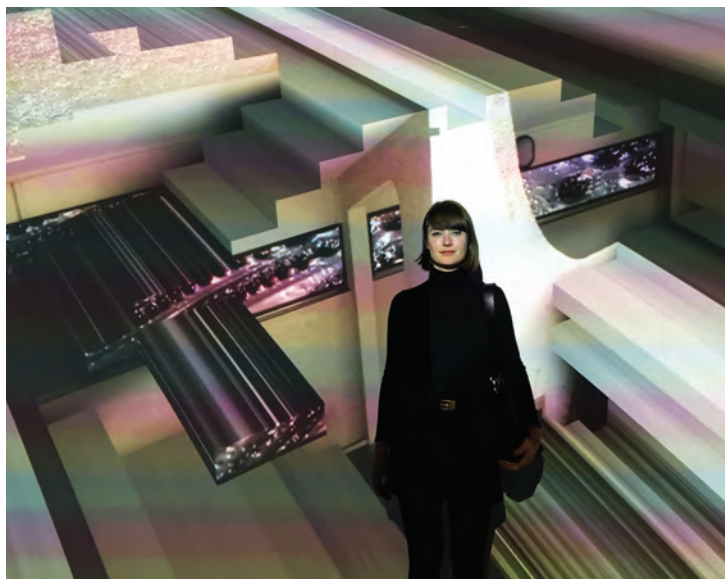


## THROUGH FEBRUARY 17

**A Century of Conservation:  
The 1918 North American  
Migratory Bird Treaty**

Ward Museum,  
Welcome Gallery

WARD MUSEUM EXHIBIT: As part of the 50th anniversary of the Ward Foundation, the Ward Museum celebrates the centennial of the 1918 Migratory Bird Treaty Act and its transformative relationship with the Chesapeake Bay through an exhibit focused on the landmark legislation. Uncover the local impact of the 1918 Migratory Bird Treaty Act through a wide array of antique decoys, sporting accessories and conservation ephemera. \$



## THROUGH MARCH 29

**Sabrina Ratté: Shifting Landscapes**  
Conway Hall 128, Electronic Gallery

Artist Talk: Thur., March 28, Conway Hall 156, 5:30 p.m.

SU ART GALLERIES EXHIBIT: From utopian architecture to painterly textures, Ratté investigates the fine line between the virtual and the physical realm. Her work includes single-channel videos, installations, sculptures, live performances and prints. Ratté visits SU from her studio in Paris to speak about her work.



## 28 MONDAY THROUGH APRIL 13

### Cultured

Fulton Hall, University Gallery  
Reception: Fri., March 8,  
6-8 p.m.

SU ART GALLERIES EXHIBIT: In the petri dish of art school, the ideas generated and work created are informed by the interactions of faculty and students. These interactions create a culture, a living, morphing body that is greater than the sum of its parts. While these cultures are fleeting, their effects can be seen in students' work long after they've left the art school dish. Former and current SU art students share their recent creative work, demonstrating the culture they continue to help create.

## 17 THURSDAY

**Discover SU:  
Brown & Church Carillon**

Blackwell Hall, 4:30-5:30 p.m.

CELL EVENT: Guided by  
William Folger, Music, Theatre  
and Dance Department.

RSVP appreciated:  
[www.salisbury.edu/cell](http://www.salisbury.edu/cell)



## 28 MONDAY THROUGH JULY 26

**If Objects Could Talk: The History Behind Eastern Shore Artifacts**

Guerrieri Academic Commons, Thompson Gallery  
Open During Nabb Center Hours  
Reception: Thu., Feb. 7, 6-7 p.m.

NABB CENTER EXHIBIT: Curated by SU junior Jaclyn Laman, this exhibit features over 30 objects from the Nabb Research Center collection. Each object in the exhibit comes from the Delmarva region and tells its own unique story. Learn about objects from right here in Salisbury, including the first electric lamp and the "Big Shoe" from the E. Homer White Shoe Co. Other objects featured include toys, pieces of furniture, paintings and much more.

Co-sponsored by the  
Honors College and the  
History Department.



Railroad derailment in Fruitland, MD, 1909.



## 28 MONDAY THROUGH JULY 26

### Captured in Time: Glimpses of the Eastern Shore through the Camera Lens

Guerrieri Academic Commons, 1st Floor Lobby  
Open During GAC Hours  
Reception: Thu., Feb. 21, 6-7 p.m.

NABB CENTER EXHIBIT: Explore the past through photographs from the Nabb Research Center Collection, including people, places and events of the Eastern Shore. The exhibit also highlights photography equipment and how it has evolved over time.



## 28 MONDAY MONDAYS THROUGH MAY 6

### Confronting Inequality/Achieving Sustainability

Fulton Hall 111, 7-8:30 p.m.

CHANGING CLIMATE/CHANGING WORLD LECTURE SERIES: The Fulton Sustainability Committee sponsors this weekly series, featuring SU faculty, guest speakers and community members who examine inequality and progress toward a sustainable world from socio-political, historical, environmental, economic and other perspectives. Questions of equity and building resilience or durable uses of environmental and social resources are explored from multiple perspectives. Presentations challenge assumptions, increase awareness of issues of inequality, sustainability and environmental justice as well as create opportunities to engage locally.

More information is available at [www.salisbury.edu/academic-offices/liberal-arts/lecture-series.aspx](http://www.salisbury.edu/academic-offices/liberal-arts/lecture-series.aspx).

# february

## 1 FRIDAY

### Crit Circle with Jayme McLellan

SU Art Galleries | Downtown, 7-9 p.m.

SU ART GALLERIES SPECIAL EVENT: Looking to get some feedback on your artwork? Local artists are invited to attend this special art critique event with curator, gallery director, educator and artist McLellan. She is the director and founder of Civilian Art Projects in Washington, D.C., and adjunct lecturer at Georgetown University. For 20 years, she has mentored artists on all aspects of professional practices and exhibition development.

*Spaces are limited; reservation required. For more information and reservations contact: [salisburyartgalleries@gmail.com](mailto:salisburyartgalleries@gmail.com) with "crit circle" in the subject line.*

## 1 FRIDAY

### SU @ the Beach: Improving STEM Outreach & Education via ThinSats & Augmented Reality

Ocean Pines Community Center, 3:30-5 p.m.

CELL SU FACULTY LECTURE SERIES: Featuring Steven Binz, Physics. This is the first of an ongoing Faculty Lecture Series running Fridays through April 19. \$

## 4 MONDAY

### Lighthouse Literary Guild: Understanding Poetry with Nancy Mitchell

Blackwell Hall, 4:30-6:30 p.m.

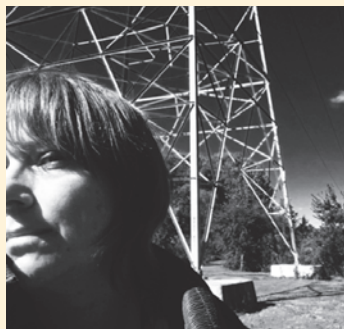
CELL CLASS: Discover the strategies to read, analyze and enjoy poetry with a Pushcart Prize-winning poet. \$

## 4 MONDAY

### Confronting Inequality/Achieving Sustainability

Fulton Hall 111, 7-8:30 p.m.

CHANGING CLIMATE/CHANGING WORLD LECTURE SERIES: Michael Lewis (ENVR): "How Did We Get Here? Historicizing Global Environmental Inequality and Sustainability"



## 4 MONDAY

### Children from the Hotel America (Lithuania)

Holloway Hall, Great Hall, 7 p.m.

BRIDGES TO THE WORLD INTERNATIONAL FILM SERIES:

The Bridges to the World International Film Series is a statewide, month-long initiative in recognition of the state's global reach and a reflection of those connections in Maryland.

From 1990, the film revolves around the lives of teenagers in Soviet Lithuania. The protagonists are fans of rock-and-roll music, which is banned in the USSR, and are interested in the hippie movement, secretly listening to Luxembourg radio. In Lithuanian with English subtitles. \$

Sponsored by World Artists Experiences and the International Division of Maryland's Office of the Secretary of State.



# february

## 5 TUESDAY

### **Domains of Caregiver Stress Among Parents of Children with Disabilities: Relations to Physical & Mental Health Outcomes**

Conway Hall 152, 3:30 p.m.  
FULTON FACULTY COLLOQUIA: Presented by Heidi Fritz, assistant professor of psychology. Featuring the research and creative work of faculty members from across the school, the colloquia celebrate both the work of individual faculty and the disciplinary diversity of the Fulton School.

## 5 TUESDAY

### **Chinese New Year Dinner Featuring Wong's Chinese Lion Dancers**

Commons, Bistro, 4:30-7:30 p.m.  
INTERNATIONAL DINNER SERIES: The Wong Chinese Lion Dancers are the lead dancers of the annual Chinese New Year Parade in Washington, D.C. 🌸 💰



## 6 WEDNESDAY

### **WEDNESDAYS THROUGH MARCH 13**

### **Lighthouse Literary Guild: Writing Your Travel Story with Mindie Burgoyne**

Blackwell Hall, 4:30-6 p.m.  
CELL CLASS: Delve into the practical aspects and creative components of storytelling with international travel writer Burgoyne. 💰



Photo Credit: Becky Oehlers Photography

## 6 WEDNESDAY

### **The Crossing**

Holloway Hall Auditorium, 7 p.m.  
CONCERT: Winner of the 2017 Grammy Award for Best Choral Performance, The Crossing is a professional chamber choir conducted by Donald Nally and dedicated to new music. It is committed to working with creative teams to make and record new, substantial works for choir – most often addressing social issues – with the possibility of changing the way we think about writing for choir, singing in choir, and listening to music for choir. The evening features a signature work, Lang's Pulitzer Prize-winning *The Little Match Girl Passion*, and highlights from the 2016 Jeff Quartets written by some of The Crossing's closest composer friends. 🌸

*This engagement is sponsored by the Office of Cultural Affairs and funded through the Mid-Atlantic Tour program of the Mid Atlantic Arts Foundation with support from the National Endowment for the Arts and the Maryland State Arts Council.*



## 7 THURSDAY

### **Taking Leave: How Fugitive Slaves Influenced the Debate Over the Future of Slavery**

Guerrieri Student Union, Wicomico Room, 7 p.m.  
FULTON PUBLIC HUMANITIES LECTURE: See page 6 for details.

## 7 THURSDAYS

### **THURSDAYS THROUGH FEBRUARY 28**

### **Lighthouse Literary Guild: Writing Your Memoir Level One with Pat Valdata**

Blackwell Hall, 6-8 p.m.  
CELL CLASS: Learn essential skills in writing, proofreading, editing and revising your memoir. 💰

## 7 THURSDAYS THROUGH MARCH 14

### **SU @ the Beach: Writing Your Memoir I with Emily Rich**

Ocean Pines Community Center, 9-10:30 a.m.  
CELL CLASS: *Delmarva Review's* Rich shares how to develop an engaging memoir. 💰

## 8 FRIDAY

### **Soul Food Dinner Featuring Bernard Sweetney**

Commons, Bistro, 4:30-7:30 p.m.  
INTERNATIONAL DINNER SERIES: See page 6 for details. 🌸 💰

## 8 FRIDAY

### **SU @ the Beach: Making the Past Personal: What Does DNA Tell Us About Our Ancestors?**

Ocean Pines Community Center, 3:30-5 p.m.  
CELL SU FACULTY LECTURE SERIES: Featuring Elizabeth Ragan, Anthropology. 💰

## 8 FRIDAYS THROUGH MARCH 15

### **Writing Your Memoir II with Emily Rich**

Ocean Pines Community Center, 10:30 a.m.-Noon  
CELL CLASS: *Delmarva Review's* Rich builds on existing skills to build a compelling memoir. 💰

# AFRICAN AMERICAN HISTORY MONTH

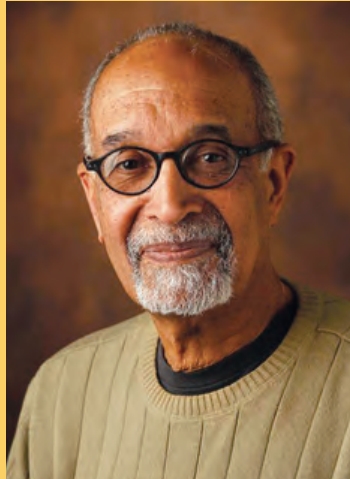
## 7 THURSDAY

### Taking Leave: How Fugitive Slaves Influenced the Debate Over the Future of Slavery

Guerrieri Student Union, Wicomico Room, 7 p.m.

LECTURE: Set in the context of the 1850 Fugitive Slave Law, Richard J.M. Blackett, Andrew Jackson Professor of History at Vanderbilt University, examines how fugitive slaves resisted the law and in doing so exacerbated a brewing conflict over the future of slavery.

Funded by the Fulton Public Humanities Program, Honors College, History Department, Multicultural Student Services, Nabb Center and Fulton School of Liberal Arts Dean's Office.



## 21 THURSDAY

### Birthright Citizens: A History of Race & Rights in Antebellum America

Perdue Hall 156, 7 p.m.

LECTURE: Through the extraordinary travels of a black Baltimorean who joined the Navy and sailed from Maryland to Brazil to San Francisco in the 1850s, Martha S. Jones, the Society of Black Alumni Presidential Professor and professor of history at Johns Hopkins University, speaks about how African Americans claimed, pursued and won legal rights before the Civil War.

Funded by the Fulton Public Humanities Program, History Department, Nabb Center and Fulton School of Liberal Arts Dean's Office.



## 8 FRIDAY

### Soul Food Dinner Featuring Bernard Sweetney

Commons, Bistro, 4:30-7:30 p.m.

INTERNATIONAL DINNER SERIES: Sweetney is a multi-instrumental jazz artist, having toured with Shirley Horn as well as Reuben Brown and Roberta Flack. 🌶️ 💰



## 8 FRIDAY

### Spoken Word & Open Mic Night

Guerrieri Student Union, Wicomico Room, 6 p.m.

PERFORMANCE: Performers from SU and surrounding areas perform spoken word performances on the theme of African American History Month.



## 28 THURSDAY

### Talking Black in America

Fulton Hall 111, 6 p.m.

FILM & PANEL DISCUSSION: The film *Talking Black in America* chronicles the incredible impact of African American English on American language and culture. Filmed across the United States, this documentary is a revelation of language as legacy, identity and triumph over adversity. A panel discussion with SU faculty follows the screening.

Funded by SU Libraries.



# february

**8** FRIDAY

**Feature Friday: Freedom Sing-Along**

**with John Wright & Wright Studio Vocalists**

The Brick Room,  
116 N. Division St.,  
6-7 p.m.

**CELL CONCERT:**  
Members of the SU  
community present  
live music. Must be  
21+ to enter.



**11** MONDAY

**The Band's Visit (Israel)**

Holloway Hall, Great Hall,  
7 p.m.

**BRIDGES TO THE WORLD INTERNATIONAL FILM SERIES:** Eight Egyptian musicians arrive by mistake in a small town in Israel's Negev Desert. With no transportation nor any hotels, the band settles at a restaurant offering them lodging.

Overcoming ethnic barriers, the Egyptians find diversion and companionship with the Israelis through a pervading undercurrent of shared melancholy. In Hebrew with English subtitles. See Feb. 4 for series details. ⚡



**11** MONDAY

**Confronting Inequality/Achieving Sustainability**

Fulton Hall 111, 7-8:30 p.m.

**CHANGING CLIMATE/CHANGING WORLD LECTURE SERIES:** Karl Maier (PSYC) & Sherry Maykrantz (CHHS): "The Biopsychosocial Ecology of Health Disparities and how Inequality 'Gets Under the Skin'"

**11** MONDAY

**MONDAYS THROUGH MARCH 18**

**Lighthouse Literary Guild: Poetry Writing with Nancy Mitchell**

Blackwell Hall, 4:30-6 p.m.

**CELL CLASS:** Examine the form and structure of poetry writing with a Pushcart Prize-winning poet. \$



**11** MONDAY

**THROUGH MAY 10 PRESTO & PRESTO Plus Lessons**

Locations & Times with Registration

**CELL CLASS:** PRESTO features individual vocal, instrumental and theatre lessons for all ages. PRESTO Plus features group piano and group guitar lessons for adults. \$

For classes, costs and registration:  
[www.salisbury.edu/music/presto](http://www.salisbury.edu/music/presto)

**12** TUESDAY

**Imago Theatre's Frogz!**

Holloway Hall  
Auditorium, 7 p.m.

*(School Performance: Wed., Feb. 13, 1 p.m.; Schools interested in bringing their students should call 410-543-6271 for more information.)*

**PERFORMANCE:** *Frogz!* put Imago on the international map. The simplicity and the charm of the show catapulted the production to two Broadway runs at the acclaimed New Victory Theatre in 2000 and 2002. The company's trademark style – which combines masks, dance and slapstick with witty social commentary on the human condition – is the direct result of over 30 years of study, development and practice. *Variety Magazine* called it "Felliniesque mayhem." *The New York Times* raved "A mastery of mime, dance and acrobatics." Recommended for "children" of all ages. ⚡



imago  
theatre  
**FROGZ!**

**13** WEDNESDAY

**Ryan Habermeyer Reading**

Perdue Hall 156, 8 p.m.

**WRITERS ON THE SHORE:**



Habermeyer is assistant professor in the SU English Department. His prize-winning stories and essays

twice have been nominated for the Pushcart Prize and published most recently in *Hotel Amerika*, *Bat City Review*, *Cimarron Review*, *Fiction International* and *Carolina Quarterly*. He is the author of the short fiction collection *The Science of Lost Futures* (BOA Editions, 2018).

**13** WEDNESDAY

**WEDNESDAYS THROUGH FEBRUARY 27**

**SU @ the Beach:**

**Shakespeare Revealed**

Ocean Pines Community Center, 1-2:30 p.m.

**CELL LECTURE SERIES:**

T. Paul Pfeiffer, SU theatre professor emeritus, explores Shakespeare's plays and sonnets to better understand his legacy. \$



## 15 FRIDAY

### SU @ the Beach: King James & the North Berwick Witch Trials of Scotland

Ocean Pines Community Center, 3:30-5 p.m.

CELL SU FACULTY LECTURE SERIES: Featuring T. Paul Pfeiffer, theatre professor emeritus. \$



## 18 MONDAY

### The Children of Genghis (Mongolia)

Holloway Hall, Great Hall, 7 p.m.

BRIDGES TO THE WORLD INTERNATIONAL FILM



SERIES: This 2017 drama follows a young boy in the Mongolian countryside as he trains for a horse race. In

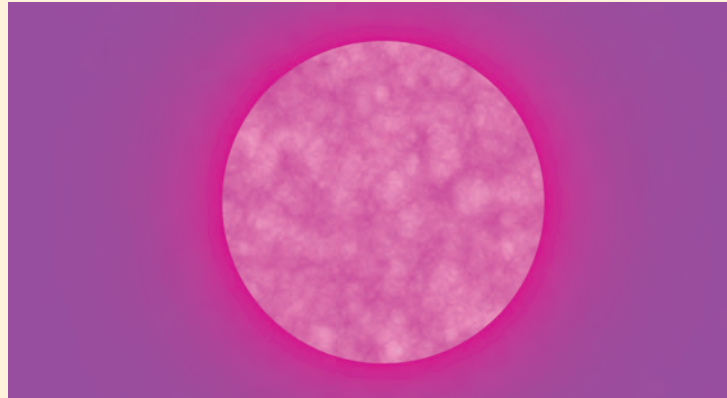
Mongolian with English subtitles. See Feb. 4 for series details. \*

## 18 MONDAY

### Confronting Inequality/Achieving Sustainability

Fulton Hall 111, 7-8:30 p.m.

CHANGING CLIMATE/CHANGING WORLD LECTURE SERIES: Environmental Justice Student Panel: Principles of Environmental Justice



## 15 FRIDAY

THROUGH MARCH 30

### Methods: 2019 Art Department Faculty Exhibition

SU Art Galleries | Downtown

Reception: 3rd Friday, February 15, 5-7 p.m.

SU ART GALLERIES EXHIBIT: The creative process often mirrors the scientific method: Artists make observations of the world around them, conduct experiments and then analyze those creative risks to form a conclusion or finished piece. The types of experiments art faculty make are often related to their teaching, either as fodder for instruction or as a spark lit by their time in the classroom. This exhibition includes SU art faculty's latest experiments from the studio and beyond.



## 19 TUESDAY

### Bridgman Packer Dance: Voyeur & Truck

Holloway Hall Auditorium, 7 p.m.

PERFORMANCE: Art Bridgman and Myrna Packer's innovative mastery of "Video Partnering" work – the integration of live performance and video technology – has been acclaimed for its highly visual and visceral alchemy of the live and virtual. With the paintings of Edward Hopper as a point of departure, *Voyeur* bears witness to fragmented moments of private lives. Through integration of live performance and video technology, an ordinary box truck in *Truck* evolves from the utilitarian into a reimagined space, a micro-world of visions and transformation. \*

*This engagement is sponsored by the Office of Cultural Affairs and funded through the Mid-Atlantic Tour program of the Mid Atlantic Arts Foundation with support from the National Endowment for the Arts and the Maryland State Arts Council.*

## 20 & 21

### Singers' Showcase

Holloway Hall, Great Hall, 7:30 p.m.

SU MUSIC CONCERT: Award-winning SU vocalists prepare for competition season with their biannual showcase.



## 21 THURSDAY

### Discover SU: Fulton Hall Arts & Music

Blackwell Hall, 4:30-5:30 p.m.

CELL EVENT: Guided by Kaitlyn Grigsby-Hall, Fulton Advancement and External Affairs.

RSVP appreciated: [www.salisbury.edu/cell](http://www.salisbury.edu/cell)

# february

## 21 THURSDAY

### Seeing Sound Series #6

Conway Hall 317, 7 p.m.

SU ART GALLERIES SPECIAL EVENT: Local band Dirt Woman rocks SU for the sixth iteration of the Seeing Sound Series. Live visuals will be created by SU new media students.



## 21 THURSDAY

### Birthright Citizens: A History of Race & Rights in Antebellum America

Perdue Hall 156, 7 p.m.

FULTON PUBLIC  
HUMANITIES LECTURE: See  
page 6 for details.

## 22 FRIDAY

### SU @ the Beach: Saving Lives through Medical Simulation

Ocean Pines Community  
Center, 3:30-5 p.m.

CELL SU FACULTY LECTURE  
SERIES: Featuring Henson  
Medical Simulation Center  
Director Lisa Seldomridge. \$

## 22 FRIDAY

THROUGH APRIL 14

### How We Live With Nature: Student Art Show

LaMay Gallery

Reception: Fri., Feb. 22, 5 p.m.

WARD MUSEUM EXHIBIT: The  
annual student art show  
showcases the artistic works  
of local students. The Ward  
Museum invites PreK-12  
students from Delmarva to  
submit their artwork for the  
show. This year's theme is  
"How We Live with Nature" in  
conjunction with a concurrent  
exhibit on cultural  
conservation landscapes as  
represented in the works of  
Robert Hines. \$

Entries are due by February 15.

## 22 FRIDAY

### The Life of Charles Albert Tindley & Hymns Which Touched Many Souls - Calvin Collins Senior Project Lecture Recital

Wicomico Presbyterian Church, 7 p.m.

SU MUSIC CONCERT: Born in Berlin,  
MD, in 1851, Tindley was a Methodist  
minister, a noted songwriter and  
composer of gospel hymns, and he is  
recognized as one of the founding  
fathers of American gospel music.



Charles Albert  
Tindley



## 22 FRIDAY THROUGH MAY 12

### A Practiced Eye: Robert Hines

Welcome Gallery

Reception: Fri., Feb. 22, 5-7 p.m.

WARD MUSEUM EXHIBIT: Hines was a wildlife artist who  
embodied the visual aspects of the federal conservation  
movement. This exhibit draws from an important collection  
of works donated to the museum by John and Frances  
Juriga of Elmyra, NY, longtime collectors, biographers and  
enthusiasts of Hines' work. As an illustrator, Hines was  
responsible for iconic and educational images of American  
wildlife throughout his decades of work with the U.S. Fish  
and Wildlife Service in the mid-20th century. His legacy is as  
both an artist and a steward of nature who strove to bring  
the beauty of nature to the American public so that they  
could better understand and therefore protect it. \$



## 23 SATURDAY

### Lift Me Up! Mid-Atlantic Gospel Masters: Ingramettes & Northern Kentucky Brotherhood Singers

Holloway Hall Auditorium, 7 p.m.

CONCERT: This roof-raising program showcases gospel music  
traditions of the mid-Atlantic region with commanding, spirit-  
filled performances that demonstrate the extraordinary depth  
of talent in American gospel music. For more than five decades,  
Evangelist Maggie Ingram and the Ingramettes have brought  
their music and ministry to congregations in the Tidewater and  
Piedmont. For late evangelist "Mama" Maggie Ingram, who led  
the group for over 50 years, music was always a family affair,  
with three generations represented in the group. The Northern  
Kentucky Brotherhood Singers is a jubilee-style, a cappella,  
sacred gospel quartet. Their music is rich and complex and  
arises out of a shared inner-city experience that stresses faith,  
learning and communicative arts. 🌟

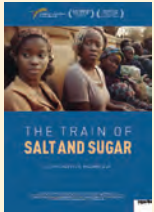
Sponsored by the Office of Cultural Affairs and funded through the Folk and  
Traditional Music Network of the Mid Atlantic Arts Foundation with support  
from the National Endowment for the Arts and the Maryland State Arts Council.

## 25 MONDAY

### The Train Carrying Salt & Sugar (Mozambique)

Holloway Hall, Great Hall, 7 p.m.

BRIDGES TO THE WORLD INTERNATIONAL FILM SERIES: During the final phase of the Mozambican Civil War, well-armed anti-government rebels cut off access to basic commodities in the African country. Caught in the middle, desperate civilians attempted



to survive, traveling hundreds of miles to trade locally produced salt for sugar in neighboring Malawi. In

Portuguese with English subtitles. See Feb. 4 for series details. 🚗

## 25 MONDAY

### Confronting Inequality/Achieving Sustainability

Fulton Hall 111, 7-8:30 p.m.

CHANGING CLIMATE/CHANGING WORLD LECTURE SERIES: Ellen Kang (SOC1): "The Resurgence of 'Small Agriculture': Food Deserts, Urban Farming and Sustainable Communities"

## 27 WEDNESDAY

### Building Community: We Can All Make a Difference

Henson Science Hall 103, 7 p.m.

PACE LECTURE: Learn how

you can make a positive impact in your community. Governor's Office on Service and Volunteerism Director Van Brooks shares



his experiences making change in Baltimore through nonprofit work and national service.



## 27 WEDNESDAY

### Designing Cost-Efficient Surveillance Systems for Early Detection of Invasive Species

Perdue Hall 156, 5:30 p.m.

ENVIRONMENTAL STUDIES COLLOQUIUM SERIES: Introduction of nonnative species can cause substantial harm to agricultural and natural resources. Resources for the Future Fellow Rebecca Epanchin-Niell discusses how bioeconomic models, which account for pest spread and control options, enable optimal allocation of surveillance resources across large landscapes and target pests to minimize long term costs from new invasive species introductions.

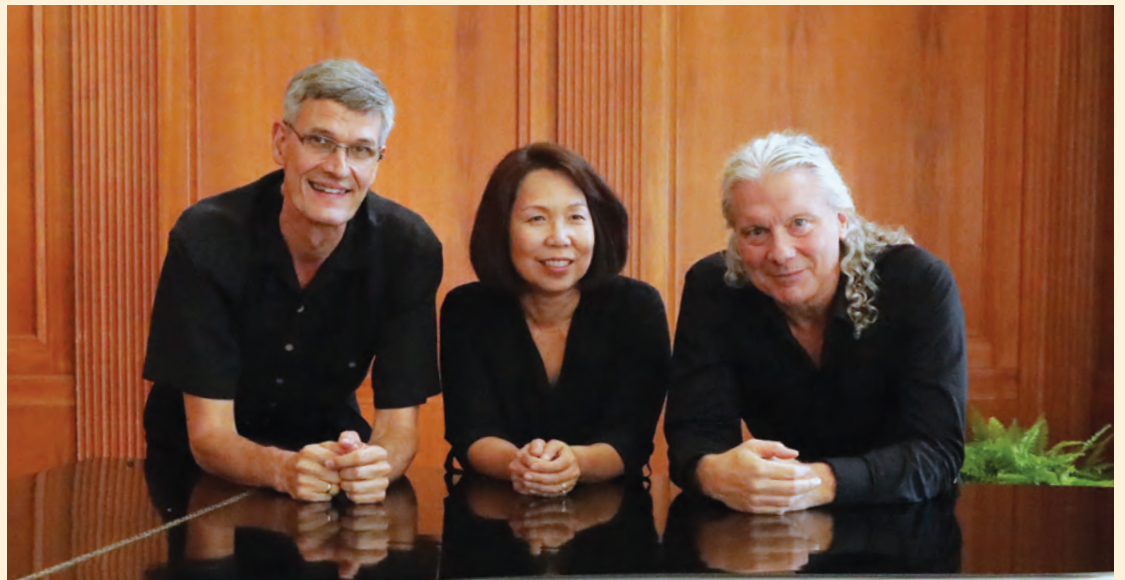
## 28 THURSDAY

### SU on the Road: Newseum Museum, Washington D.C.

Leave SU: 7:30 a.m.;

Return: 7:30 p.m.

CELL BUS TRIP: David Burns, Communication Arts, lectures on the bus. 💰



## 27 WEDNESDAY

### Allegheny Ensemble Presents Salut d'Amour

Holloway Hall, Great Hall, 7 p.m.

SU MUSIC CONCERT: This evening of French music features Edouard Lalo's Piano Trio No. 2 and a showcase of talented SU music students.

# march

## 1 FRIDAY

**SU @ the Beach: The Gut-Brain Connection: Its Role in Immunity, Mental Health & Behavior**

Ocean Pines Community Center, 3:30-5 p.m.

CELL SU FACULTY LECTURE SERIES: Featuring Jessica Clark, Biology. \$



## 2 SATURDAY

**Thoreau, Adventure, Anarchism & Zen with Donald Whaley**  
Conway Hall 179, 10 a.m.-3 p.m.

ADVENTURES IN IDEAS: HUMANITIES SEMINAR: History Professor Emeritus Whaley examines how Henry David Thoreau combined ideas from Buddhism, anarchism and adventure literature to create his philosophy. \$



## 2 SATURDAY

**SATURDAYS THROUGH MARCH 16**

**Editing Drone Video with Jesse Campbell**

Blackwell Hall, 9-10:30 a.m.

CELL CLASS: Learn the basics of editing and integrating drone footage in this three-week hands-on course. \$

## 4 MONDAY

**Film from Chile**

Holloway Hall, Great Hall, 7 p.m.

BRIDGES TO THE WORLD INTERNATIONAL FILM SERIES: The film will be announced in spring and is in Spanish with English subtitles. See Feb. 4 for series details. ☆

## INTERNATIONAL FRANCOFONIE MONTH

## 5 TUESDAY

**Comédie Surprise!**

Fulton Hall 111, 7 p.m.

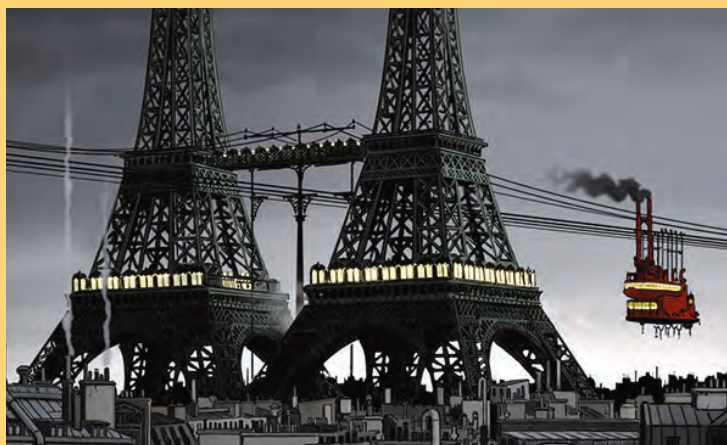
FILM: Get a good laugh in "version française." In French with English subtitles. Presented by Aurélie Van de Wiele, Modern Languages and Intercultural Studies Department.

## 7 THURSDAY

**Studying in France: A Student's Perspective**

Fulton Hall 111, 7 p.m.

COLLOQUIUM: French majors who have just spent a semester studying in Lyon share their experience. They discuss what they learned about themselves and how their outlook on life has changed by spending time in France. They also reflect on the importance of traveling, cultural awareness and diversity. Learn about how living abroad can transform you!



## 11 MONDAY

**Avril ou le monde truqué (April & the Extraordinary World)**

Conway Hall 153, 7 p.m.

FILM: In a dystopic France still ruled by the Bonapartes and where modern technology and progress are frowned upon, scientists seem to mysteriously vanish. April, the teenage daughter of two brilliant chemists, goes on a search to find her missing parents. In French with English subtitles. Presented by Arnaud Perret, Modern Languages and Intercultural Studies Department.

# WOMEN'S HISTORY MONTH EVENT

Sponsored by the Modern Languages and Intercultural Studies Department and the Fulton School of Liberal Arts Dean's Office.

## 13 WEDNESDAY

**French Conversation Hour**  
Hopper's Tap House, 5:30 p.m.  
SPECIAL EVENT: Led by Aurélie Van de Wiele, Modern Languages and Intercultural Studies Department, and upper-level SU French students. Open to high-intermediate and advanced speakers.

## 25 MONDAY

**French Conversation Hour**  
Conway Hall Café, 3 p.m.  
SPECIAL EVENT: Led by Arnaud Perret, Modern Languages and Intercultural Studies Department. Open to beginners and low-intermediate speakers.

## 27 WEDNESDAY

**Visages, Villages (Faces, Places)**  
Conway Hall 153, 7 p.m.  
FILM: Eighty-nine-year-old director Agnès Varda and young street artist JR travel throughout France to find subjects for JR's famous photographic mural portraits. Through interactions between this unexpected duo and the people they encounter, this documentary draws a complex and tender picture of modern-day rural France and its inhabitants. In French with English subtitles. Presented by Ryan Conrath, English Department.



Vera Atkins

## 5 TUESDAY

**"Courage, endurance & self-sacrifice of the highest possible order": British Women Spies of World War II**

Conway Hall 153, 7 p.m.

FULTON PUBLIC HUMANITIES LECTURE: In celebration of Women's History Month, examine the women who served as agents in the Special Operations Executive (SOE) during World War II. Allison Abra, associate professor at the University of Southern Mississippi, discusses how these women "set Europe ablaze" through sabotage and subversive warfare. A reception follows the lecture.

## 4 MONDAY

**Confronting Inequality/Achieving Sustainability**

Fulton Hall 111, 7-8:30 p.m.

CHANGING CLIMATE/CHANGING WORLD LECTURE SERIES: Shane Hall (ENVR): "Expanding Definitions of Violence in a Time of Climate Change"

## 5 TUESDAY

**Asian Peacebuilding: Theory & Practice**

Conway Hall 152, 3:30 p.m.

FULTON FACULTY COLLOQUIA: Presented by Keetha Soosapillai, associate professor of conflict analysis and dispute resolution. See Feb. 5 for series details.

## 5 TUESDAY

**Mardi Gras Dinner Featuring Such Fools**

Commons, Bistro, 4:30-7:30 p.m.

INTERNATIONAL DINNER SERIES: Such Fools are bound together on a quest for a meaningful musical experience amid the vast peninsula known simply as Delmarva. They are as diverse as their backgrounds. ☆ \$

Sunset Tylerton, Smith Island (Courtesy Dave Harp)



## 6 WEDNESDAY

**Island Out of Time Screening**

Perdue Hall 156, 6 p.m.

ENVIRONMENTAL STUDIES COLLOQUIUM SERIES: This film portrays the struggles of a family with whether to stay on the island where they've been for 300 years or leave for the mainland. Accompanied with readings from Tom Horton's book, *Island Out of Time*, which wrote of the same family 25 years ago. Smith Island, the setting beautifully portrayed in David Harp's photography, is Maryland's only offshore inhabited island. The Marshall family in the film includes Dwight, a top Bay waterman; Mary Ada his wife, known for her eight-layer chocolate cakes (the state dessert); and their four children who have already left the island physically, but not emotionally.



Photo Credit: Rick Maloof

## 6 WEDNESDAY

**Nancy Mitchell Reading**

Commons, Worcester Room, 8 p.m.

WRITERS ON THE SHORE: Mitchell is a 2012 Pushcart Prize winner and the author of three volumes of poetry, *The Near Surround* (Four Way Books, 2002,) *Grief Hut* (Cervena Barva Press, 2009) and *The Out-of-Body Shop* (Plume Editions in 2018.) She is co-editor of *Plume Interviews 1* (MadHat Press, 2016.) Her poems have appeared in *Agni*, *Green Mountains Review*, *Poetry Daily*, *Washington Square Review*, among other journals, and have been anthologized in *Last Call* (Sarabande Books), *The Working Poet* (Autumn House Press) and *Plume 3, 4, & 5*. She has been an artist in residence at Virginia Center for the Creative Arts in San Angelo and Auvillar, France, and at Spring Creek, Oregon State University. Mitchell teaches in SU's CELL program and serves as associate editor of special features for *Plume Poetry*.

# march

## 6 WEDNESDAY

### SU Trombone Day

Holloway Hall, Great Hall,  
7:30 p.m.

SU MUSIC CONCERT: Guest performer is Isrea Butler.



## 7 THURSDAYS

THURSDAYS THROUGH  
MARCH 28

### Lighthouse Literary Guild: Writing Your Memoir Level Two with Pat Valdata

Blackwell Hall, 6-8 p.m.

CELL CLASS: Learn essential skills in writing, proofreading, editing and revising your memoir. \$

## 8 FRIDAY

### SU Women's Forum International Women's Day Conference: Seeking Justice, Balancing The Scales

Commons, Worcester Room,  
2-5 p.m.

CONFERENCE: Seismic power shifts are occurring. We are all grappling with how to deal with these imbalances. Join in a lively discussion that deals with the topic of working for justice, especially as it affects women and those who identify as female. A dozen fast-paced presentations explore ideas that University members have to create and promote greater justice for all. Reception immediately follows.

Register at [www.salisbury.edu/suwf](http://www.salisbury.edu/suwf)



## 8 FRIDAY

### SU @ the Beach: Poetry Deconstructed: The Bones We Don't See

Ocean Pines Community Center, 3:30-5 p.m.

CELL SU FACULTY LECTURE SERIES: Featuring John Nieves, English. \$

## 8 FRIDAY

### Feature Friday: Red Letter Day

The Brick Room, 116 N.  
Division St., 6-7 p.m.

CELL CONCERT: Members of the SU community present live music. Must be 21+ to enter.

## 11 MONDAY

### Confronting Inequality/ Achieving Sustainability

Fulton Hall 111, 7-8:30 p.m.

CHANGING CLIMATE/CHANGING WORLD LECTURE SERIES: Jim Burton (CMAT): "Inequality and Sustainability Go to the Movies"



## 9 SATURDAY

### On The Double Featuring Duo MemDi, Violin & Piano

Holloway Hall Auditorium, 7:30 p.m.

SALISBURY SYMPHONY ORCHESTRA: Duo MemDi was founded by violinist Igor Kalnin and pianist Rochelle Sennet in summer 2010, when they served on the faculty at Blue Lake Fine Arts Camp in Michigan. The duo performs all repertoire by memory, as they believe that it allows them to connect with composers' ideas in a more profound and insightful way. They understand it as internalization and re-composing of the structural, harmonic and melodic elements of a particular work. Another focus of the duo is to increase diversity and inclusion in the world of classical music, and they have worked with living composers from various backgrounds. These two fundamental ideas created the name of the duo: Mem[ory] and Di[versity] - MemDi. Since its inception, the Duo performed a broad variety of repertoire by memory, including sonatas of Bartok, Beethoven, Brahms, Franck and Prokofiev, and numerous violin and piano showpieces. The duo has also commissioned a number of works, including Sonata No. 2 for Violin and Piano by the African-American composer James Lee III and Double Concerto for Violin, Piano and String Orchestra by the Uzbek woman composer Dilorom Saidaminova. They performed extensively in Europe, Asia and across the United States. \$





## 11 & 12

### Chinese Puppet Workshop Featuring Puppet Artist Chen Lihui Holloway Hall, Great Hall, 7 p.m.

*(Schools interested in having the puppet master visit their school call 410-543-6271 for more information.)*

**SPECIAL EVENT:** Puppet master Lihui, inheritor for the intangible cultural heritage of the Zhangzhou Puppet Troupe, shares the secrets of the Chinese puppet theatre. As keeper of the national intangible cultural heritage, Lihui won the Best Honorary Performance Award at the Spanish International Puppet Festival, the 13th Subotica International Children's Puppet Festival in Ethiopia and the Best Performing Arts Award for Best Handheld Art, Czech Republic. 🌟

*Sponsored by the Office of Cultural Affairs, World Artists Experiences and the Embassy of the Peoples Republic of China.*

## 12 TUESDAY TUESDAYS THROUGH APRIL 2

*(no class March 19)*

### SU @ the Beach: War of Words: Media Coverage of Conflicts & Causes from My Lai to #MeToo

Ocean Pines Community  
Center, 3:30-5 p.m.

CELL LECTURE SERIES:  
Featuring Dave Burns, SU  
Communication Arts. \$

## 13 WEDNESDAY

### St. Patrick's Day Dinner Featuring the Folk Heroes

Commons, Bistro,  
4:30-7:30 p.m.

INTERNATIONAL DINNER  
SERIES: SU celebrates Irish  
heritage and the many  
positive contributions that  
Irish people have made to  
American life. Enjoy the Irish  
tunes of Robin Cockey, Bob  
Hayman, Mick Haensler and  
Charlie Stegman. 🌟 \$

## 14 THURSDAY

### Olivia Kim Artist Talk

Conway Hall 156, 5:30 p.m.  
Residency: March 10-15

SU ART GALLERIES ARTIST  
TALK: Kim's art is inspired by  
the lightness of being. She  
specializes in body movement.  
Through her own direct  
experience of movement, Kim  
explores the visceral experience  
of her subjects. Her figurative  
sculptures seek to convey the  
ever-changing architecture of  
the human being.



## 15 FRIDAY

### SU @ the Beach: Detecting Fake from Factual: A Common Sense Approach to Consuming Mass Media

Ocean Pines Community  
Center, 3:30-5 p.m.

CELL SU FACULTY LECTURE  
SERIES: Featuring Dave Burns,  
Communication Arts. \$

## 20 WEDNESDAY

### SU on the Road: American Visionary Museum, Baltimore

Leave SU: 7:30 a.m.;  
Return: 7 p.m.

CELL BUS TRIP: \$

## 21 THURSDAY

### Discover SU: University Archives & Special Collections

Blackwell Hall, 4:30-5:30 p.m.

CELL EVENT: Guided by  
University Archivist Ian Post.

RSVP appreciated:  
[www.salisbury.edu/cell](http://www.salisbury.edu/cell)



## 25 MONDAY

### Confronting Inequality/ Achieving Sustainability

Fulton Hall 111, 7-8:30 p.m.

CHANGING CLIMATE/  
CHANGING WORLD  
LECTURE SERIES: Stephanie  
Bernhard (ENGL): "The  
'Anthropocene' Debate: How  
Should We Name  
Environmental Inequality?"

# march

## PETER & JUDY JACKSON CHAMBER MUSIC FESTIVAL

**25 MONDAY**

### The Morgenstern Trio

Holloway Hall, Great Hall, 7 p.m.

CONCERT: To name a piano trio after the popular 19th century German poet Christian Morgenstern was the inspiration of Catherine Klipfel, piano; Stefan Hempel, violin; and Emanuel Wehse, cellist, who met during their studies at the Folkwang Conservatory in Essen, Germany. After only two short years of working together, the Morgenstern Trio emerged on the German music scene by being awarded top prizes and awards, such as the prestigious U.S. Kalichstein- Laredo - Robinson Trio Award. This prize catapulted them onto the scene in the U.S. with performances at the Kennedy Center and Carnegie Hall, among other national locations. 🌟



**27 WEDNESDAY**

### Russian String Orchestra

Holloway Hall Auditorium, 7 p.m.

CONCERT: Moscow's finest young string ensemble, the Russian String Orchestra, formally known as Chamber Orchestra Kremlin, returns with its trademark virtuosity, high energy and warmth. Under the baton of founder and music director Misha Rachlevsky the Russian String Orchestra delivers impassioned performances that linger in the soul long after the last note resonates. They were awarded Critics Choice in London's *Gramophone*, Critics Choice in the *New York Times* and record of the year in Hong Kong. Experiencing the Russian String Orchestra will move your soul. See below for details on a Russian Dinner held in conjunction with the concert. 🌟

*Sponsored by the Office of Cultural Affairs and World Artist Experiences, Inc.*



**27 WEDNESDAY**

### Russian Dinner

Commons, Bistro,  
4:30-7:30 p.m.

INTERNATIONAL DINNER SERIES: This dinner is held in conjunction with the performance of the Russian String Orchestra, see above for details. 🌟 💰

**28 THURSDAYS  
THROUGH MAY 2**

### Writing Your Memoir I with Emily Rich

Ocean Pines Community  
Center, 9-10:30 a.m.

CELL CLASS: *Delmarva Review's* Rich shares how to develop an engaging memoir. 💰

**29 FRIDAYS  
THROUGH MAY 3**

### Writing Your Memoir II with Emily Rich

Ocean Pines Community  
Center, 10:30 a.m.-Noon

CELL CLASS: *Delmarva Review's* Rich builds on existing skills to build a compelling memoir. 💰

**29 FRIDAY**

### SU @ the Beach: Sculpture & Movement: Animating the Unmoving

Ocean Pines Community  
Center, 3:30-5 p.m.

CELL SU FACULTY LECTURE  
SERIES: Featuring Bill Wolff,  
Art Department. 💰

**30 SATURDAY**

### The Jerry Tabor Ear Alliance Conway Hall 316, 7:30 p.m.

SU MUSIC CONCERT:  
Featuring compositions by  
guitarist Jerry Tabor, the band  
plays contemporary jazz and  
fusion that bridges the divide  
between various modern  
musical styles. Tabor plays  
several of his solo guitar  
works and is joined by  
trumpet, piano, bass and  
drums in tightly woven  
ensemble interplay.

**29-31**

### Mid-Atlantic Ottoman Studies Workshop

Perdue Hall 362

Fri., 4 p.m.: Keynote Address; Sat.-Sun., 9 a.m.-4:30 p.m.

WORKSHOP: SU hosts the inaugural workshop, which provides an opportunity for leading scholars of Ottoman studies in the mid-Atlantic region to present their current research projects. For information contact Emin Lelic at [exlelic@salisbury.edu](mailto:exlelic@salisbury.edu).

*Sponsored by the Fulton School of Liberal Arts, Graduate Studies and Research Office, History Department, English Department and Philosophy Department.*



# april

## 1 MONDAY

### Confronting Inequality/Achieving Sustainability

Guerrieri Academic Commons, Assembly Hall, 7-8:30 p.m.

CHANGING CLIMATE/ CHANGING WORLD LECTURE SERIES:

Laura Pulido – educator, author and activist – explores racial inequality and environmental justice.



## 4 THURSDAY

### Hidden Stories of Objects from the Chesapeake Bay Maritime Museum Collection

Guerrieri Academic Commons, Nabb Center Classroom, 6:30 p.m.

NABB CENTER EVENT: Join Chesapeake Bay Maritime Museum Chief Curator Pete Leshar for detective stories about the unexpected history behind cultural and artistic objects. From a 19th-century painting to 20th-century folk sculpture, research in archival and journalistic sources has uncovered surprising cultural connections, which provide rich interpretive opportunities to connect these local and object-specific stories to broader themes in regional and American history – slavery and its legacy, natural resource exploitation and conservation, and themes of national expansion.

Co-sponsored by the History Department



## 4-6 5TH ANNUAL SALISBURY PERCUSSION FESTIVAL 2019 (SPF 19)

Holloway Hall Auditorium

SU MUSIC CONCERTS: This year celebrates music-making with modern technology and features guest artists The Kraken Quartet and new music by composer Quinn Collins.

### THURSDAY • 7:30 p.m.

#### An Evening of Percussion

Under the direction of Eric Shuster, the SU Percussion Ensemble's spring program features new music by Quinn Collins, a Philadelphia-based composer of rhythmically engaging acoustic and electroacoustic music who combines rigorous formal schemes and processes with rock energy.



### FRIDAY • 7:30 p.m.

#### The Kraken Quartet

A massive force of percussion and electronics, The Kraken Quartet is a genre-crossing group known for its highly energetic and engaging performances. Since their formation in 2012, the Austin-based group has been heralded for merging elements of math rock, minimalism, indie, post-rock, electronica and the avant-garde. The Kraken Quartet has been featured on festivals, including South by Southwest and Fast Forward Austin.



### SATURDAY • 7:30 p.m.

#### World Drum Experience

Under the direction of Ted Nichols, the new world music band features a mix of reggae, Afro-beat, Latin, contemporary rock and funk music.

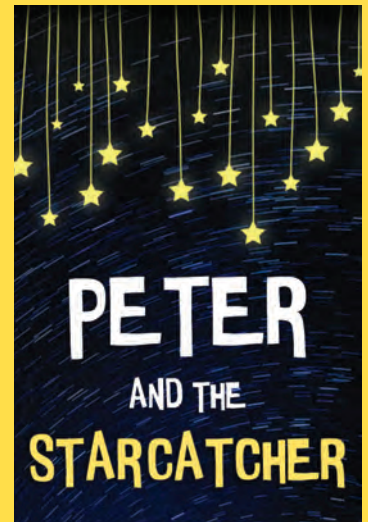


## 4-7\* & 11-14\*

### Peter & the Starcatcher

Fulton Hall, Black Box Theatre, 8 p.m. & \*2 p.m.

SU THEATRE: The Tony-winning, wildly theatrical adaptation of Dave Barry and Ridley Pearson's best-selling novel upends the century-old story of how a miserable orphan comes to be "The Boy Who Would Not Grow Up" (aka Peter Pan). From marauding pirates and jungle tyrants to unwilling comrades and unlikely heroes, *Peter and the Starcatcher* playfully explores the depths of greed and despair ... and the bonds of friendship, duty and love. Written by Rick Elice. Music by Wayne Barker. Directed by Matt Saltzberg. \$



## 4 THURSDAY

### SU on the Road: National Mall, Washington, D.C.

Leave SU: 7:30 a.m.;

Return: 8 p.m.

CELL BUS TRIP: \$

## 5 FRIDAY

### SU @ the Beach: Respectability Politics & (un)Civil Disobedience

Ocean Pines Community Center, 3:30-5 p.m.

CELL SU FACULTY LECTURE SERIES: Featuring April Logan, English. \$

## 6 SATURDAY

### Undercurrents 01

SU Art Galleries |  
Downtown, 7-11 p.m.

SU ART GALLERIES  
SPECIAL EVENT: This one-night spring festival celebrates underground art culture on the Eastern Shore. It features local bands Swell Fellas and Dirt Woman, rapper Devon Beck, a screening of surfer Simon Hetrick's recent film *EXPOSED* with footage by SU alumni Matt McQueeney, an exhibition by local artists, great food and drinks.



## 10 WEDNESDAY

### SU President Charles A. Wight Inauguration

Time & Location To Be Announced  
SPECIAL EVENT: SU celebrates the inauguration of President Charles A. Wight. Look for event details in the spring.



## 11 THURSDAY

### LGBTQ Film Festival: The Miseducation of Cameron Post

Fulton Hall 111, 7 p.m.

FULTON PUBLIC HUMANITIES FILM: Celebrate LGBTQ history and pride with a series of three award-winning independent films. Follow Cameron as she is sent to a gay conversion therapy center after getting caught with another girl in the back seat of a car on prom night. In the face of intolerance and denial, Cameron meets a group of fellow sinners. Together, this group of teenagers form an unlikely family as they fight to survive. A panel discussion and opening reception follow the film. See May 9 and June 13 for other films.

## 6 SATURDAY

### Jeffrey Todd Senior Recital

Holloway Hall, Great Hall,  
4 p.m.

SU MUSIC CONCERT



## 8 MONDAY

### Confronting Inequality/ Achieving Sustainability

Fulton Hall 111, 7-8:30 p.m.

CHANGING CLIMATE/CHANGING WORLD LECTURE SERIES: Sol Neely: "Unsettling Skepticism: Indigenous Phenomenology and Decolonial Sustainability in a Changing World"

## 11 THURSDAY

### Photographic Innovation and the Delmarva Peninsula

Guerrieri Academic Commons, Nabb Center Classroom,  
6 p.m.

NABB CENTER EVENT: SU professor and art historian Jennifer Kruglinski discusses the evolution of photography. Since its inception in France and Britain in the 1830s, photography has documented the surrounding world for artists and individuals alike. Once this innovative technology traveled to America, a new audience became enraptured by the possibilities presented by the fusion of art and technology in photography. Kruglinski discusses how this new technology allowed Delmarva residents of all economic groups to make their mark on history, from portraiture, to the documentation of news and events, to mementos of private lives all frozen in time with the click of a button and the close of the shutter.



## 11 THURSDAY THROUGH JULY 27

### David First: Dave's Waves Sonic Restaurant

Conway Hall 128,  
Electronic Gallery

Reception/Performance:  
Thur., April 11, 2 p.m.

SU ART GALLERIES EXHIBIT: Dave's Waves is an experiment in presenting experimental art, serving up uncompromising audio and video in a welcoming, lightly humorous environment that allows those unfamiliar with cutting-edge aesthetics to relax and immerse themselves in a unique experience. Its charms also extend to those already well versed in contemporary art practices.



## 11 THURSDAY

### New Music Salisbury

Holloway Hall, Great Hall,  
7:30 p.m.

SU MUSIC CONCERT



ANNUAL  
SPRING SHOWCASE

SU DANCE COMPANY

**11-14\***

**Spring Dance Concert**  
Holloway Hall Auditorium,  
8 p.m. & \*2 p.m.

SU DANCE COMPANY:  
The program features  
works by guest artists and  
resident faculty. Directed  
by Helen Myers. \$

## 12 FRIDAY

### SU @ the Beach: Harvesting Sunlight with Advances in Green Nanotechnology

Ocean Pines Community  
Center, 3:30-5 p.m.

CELL SU FACULTY LECTURE

SERIES: Featuring Lena  
Woodis, Chemistry. \$

## 12 FRIDAY

### Feature Friday: Sachi Murasugi & Jeff Schoyen

The Brick Room, 116 N.  
Division St., 6-7 p.m.

CELL CONCERT: Members of  
the SU community present live  
music. Must be 21+ to enter.

## 12 FRIDAY

### Brazilian Pianist & Composer

#### André Mehmari

Holloway Hall, Great Hall, 7 p.m.

WRITEN PIANO CONCERT

SERIES: From his youth,  
Mehmari's musical sensibility has  
known no borders, freely flowing  
between Chopin, Scott Joplin and  
Ernesto Nazareth. Now a  
renowned pianist and composer,  
he has forged a language of tremendous expressive power  
from the resources of Brazilian, jazz and classical music. He  
deploys his instinct for composition not only in the writing of  
new works and arrangements, but also in interpretation. Widely  
recognized in his native Brazil as an artistic leader of his  
generation, he has been awarded prizes both in Brazilian  
popular music and in classical music. ☆

*Sponsored by the Office of Cultural Affairs, World Artists Experiences and the Embassy of Brazil.*



Photographed by Frank Wing

## 12 FRIDAY

### The Living Art of Islamic Calligraphy

Fulton Hall 111, 4 p.m.

LECTURE: The  
preeminent ambassador  
of the art of Islamic  
calligraphy in America,  
Mohamed Zakariya,  
reflects on the history and  
current state of Islamic  
calligraphy, drawing  
extensively on his own  
experience, and shares  
some of his own work.  
Known for his design of  
the "Eid Greetings" U.S.  
postage stamps, he  
concentrates primarily on  
classical Arabic and  
Ottoman Turkish  
calligraphy.

*Sponsored by the Fulton Public  
Humanities Series. For  
information contact Emin Lelic at  
exlelic@salisbury.edu.*

## 13 SATURDAY

### National Cherry Blossom Festival Parade, Washington, D.C.

BUS TRIP: The festival marks the 107th  
celebration of the gift of the 3,000 cherry  
trees from Tokyo to Washington, D.C.  
See ticket information on p. 29. ☆ \$



## 14 SUNDAY

### From Russia with Music: Beautiful Stories & Heritage of Russian Composers

Holloway Hall, Great Hall,  
2 & 4 p.m.

SU MUSIC GREAT  
COMPOSERS SERIES:

This concert of local, young  
pianists, celebrates the  
heritage of Russian music with  
special guest Kat Souponetsky,  
a graduate of The Juilliard  
School, Curtis Institute of  
Music and Manhattan School  
of Music. Her works have been  
performed and broadcasted  
across the globe, and when  
not composing for the concert  
stage, she actively teaches  
piano, composition and music  
theory.



## 15 MONDAY

### Confronting Inequality/Achieving Sustainability

Fulton Hall 111, 7-8:30 p.m.

CHANGING  
CLIMATE/CHANGING  
WORLD LECTURE SERIES:  
James Hatley (ENVR/PHIL):  
"Buffalo Resilience in a  
Landscape of Ecocide"

# april

## 16 TUESDAY

**American Empire & Trump**  
Conway Hall 152, 3:30 p.m.  
FULTON FACULTY  
COLLOQUIA: Presented by  
Mike O'Loughlin, professor of  
political science. See Feb. 5  
for series details.

## 17 WEDNESDAY

**Water Markets: A High-Resolution View from California**  
Perdue Hall 156, 5:30 p.m.  
ENVIRONMENTAL STUDIES  
COLLOQUIUM SERIES: Anita  
M. Chaudhry, associate  
professor of economics at  
California State University,  
Chico, discusses water  
marketing, where farmers  
holding senior water rights  
can choose to lease their  
water rights to interested  
buyers. Using remotely  
sensed land use data to study  
farmer-level agricultural water  
sale decisions, Chaudhry  
explores how California  
farmers have responded to  
changes in state and local  
water transfer policies, price  
of crops and droughts in their  
water sale decisions.



## 18 THURSDAY

**Discover SU: Richard A. Henson School of Science & Technology**  
Blackwell Hall, 4:30-5:30 p.m.  
CELL EVENT: Guided by  
Henson School Interim Dean  
Mike Scott.  
RSVP appreciated:  
[www.salisbury.edu/cell](http://www.salisbury.edu/cell)



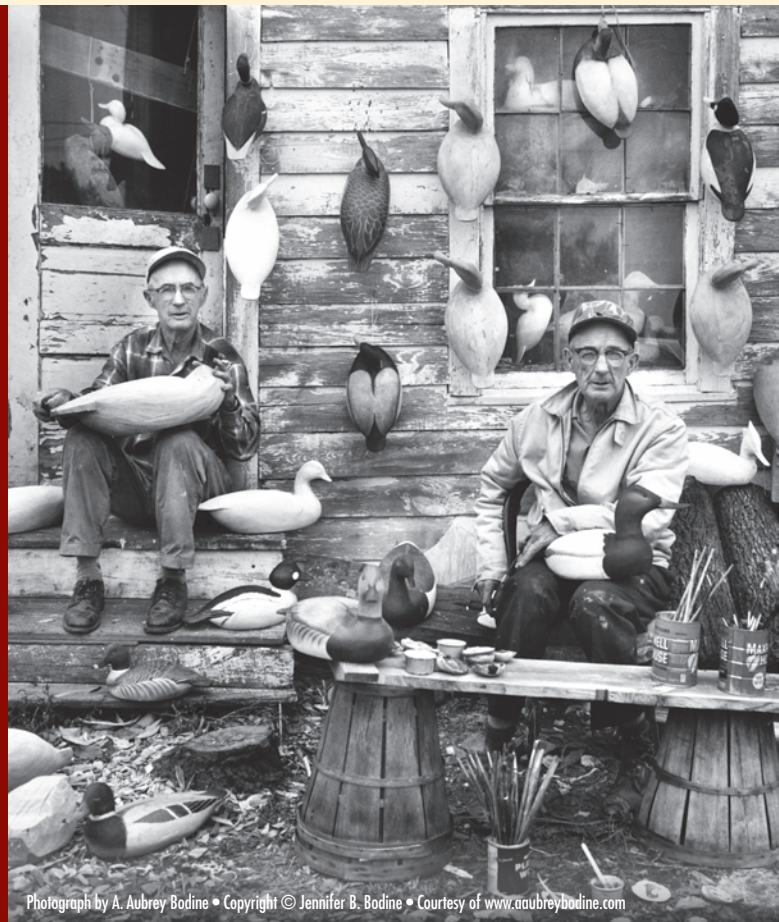
## 17 WEDNESDAY

**Melissa Crowe Reading**  
Commons, Worcester Room, 8 p.m.  
WRITERS ON THE SHORE: Crowe is the author of *Dear Terror*, *Dear Splendor* (University of Wisconsin Press, 2019). She teaches poetry and publishing and coordinates the M.F.A. program at University of North Carolina Wilmington and she is co-editor of *Beloit Poetry Journal*. She lives in Wilmington, NC.

## 19 FRIDAY THROUGH SEPTEMBER 15

**Chesapeake Visual Icons**  
LaMay Gallery  
Reception: Fri., April 19,  
5-7 p.m.

WARD MUSEUM EXHIBIT:  
The area surrounding the  
Chesapeake Bay has a distinct  
visual appeal that is centered in  
the iconic images of the Bay,  
its people, and the incredibly  
diverse bounty of both the  
water and land. From the arch  
of the Bay Bridge rising over  
the Chesapeake to the Ward  
Brothers in their workshop, this  
exhibit features historical  
pictures that have shaped the  
wider understanding of the  
Chesapeake. Paired with the  
historical images, contemporary  
photographers display works  
that feature the Chesapeake  
through both cultural and  
environmental perspectives,  
offering a powerful sense of  
where we've been and where  
we are. \$



Photograph by A. Aubrey Bodine • Copyright © Jennifer B. Bodine • Courtesy of [www.aubreybodine.com](http://www.aubreybodine.com)



## 19 FRIDAY THROUGH MAY 7

**60th Bi-Annual Senior Exhibitions: Fine Arts**  
SU Art Galleries | Downtown  
Awards Reception:  
Fri., April 26, 5-7 p.m.  
SU ART GALLERIES EXHIBIT

## 19 FRIDAY

**SU @ the Beach: Using Geology & Remote Sensing to Reconstruct Past Environments Along the Nanticoke River During John Smith's Voyage**  
Ocean Pines Community Center, 3:30-5 p.m.  
CELL SU FACULTY LECTURE SERIES: Featuring Brent Zaprowski, Geography and Geosciences. \$

# TIBETAN MONKS' RESIDENCY

## April 23-27

**Healing the Earth: A Sacred Art by the Tibetan Lamas of Drepung Loseling Monastery**  
Holloway Hall, Great Hall

For the seventh time, 11 Tibetan monks from the famed Drepung Loseling Institute, with blessings from His Holiness the Dalai Lama, are in residence at SU. ☸  
*Sponsored by the Office of Cultural Affairs and University Dining Services.*

### The Mystical Arts of Tibet: Mandala Sand Painting

*(Schools interested in bringing their students please call 410-543-6271 for more information.)*

■ TUESDAY • Noon

#### Opening Ceremony

The monks begin by consecrating the site of the mandala sand painting with approximately 30 minutes of chants, music and mantra recitation.

#### Drawing of the Lines

Immediately following the opening ceremony, the monks start drawing the line design for the mandala. This is very exacting work that takes about three hours to complete. Construction begins immediately following drawing of the lines.

■ TUESDAY • Noon-7 p.m.

WEDNESDAY-FRIDAY • 10 a.m.-7 p.m.  
& SATURDAY • 10 a.m.-Noon

#### Mandala Construction

Following the drawing of the lines, the monks lay on the colored sands, which is effected by pouring the sand from traditional metal funnels called chak-purs. Each monk holds a chak-pur in one hand, while running a metal rod on its grated surface; the vibration causes the sands to flow like liquid. The finished mandala is approximately 5 feet by 5 feet.

■ SATURDAY • Noon

#### Completed Mandala Viewing

■ SATURDAY • 2 p.m.

#### Consecration & Closing Ceremony

The monks dismantle the mandala, sweeping up the colored sands to symbolize the impermanence of all that exists. Half of the sand is distributed to the audience as blessings for personal health and healing.

■ SATURDAY • immediately following the Closing Ceremony; Salisbury City Park

#### Dispersal Ceremony

The remaining sand is carried in a procession by the monks, accompanied by guests, to a flowing body of water, where it is ceremonially poured to disperse the healing energies.

#### ASSOCIATED EVENTS

**23 TUESDAY**

**The Meaning of the Mandala Lecture**  
Holloway Hall, Great Hall, 7 p.m.

**24 WEDNESDAY**

**Monastic Life Lecture & Demo**  
Holloway Hall Auditorium, 7 p.m.

**25 THURSDAY**

**International Dinner Series: A Taste of Tibet**  
Commons, Bistro, 4:30-7:30 p.m.  
See April 25 for details. \$

**26 FRIDAY**

**Meditation for Focus & Stress Relief Lecture**  
Holloway Hall, Great Hall, 7 p.m.

**21 SUNDAY**

#### Easter Dinner

Commons, Bistro,  
4:30-7:30 p.m.

INTERNATIONAL DINNER  
SERIES ☸ \$

**22 MONDAY**

#### Confronting Inequality/ Achieving Sustainability

Fulton Hall 111, 7-8:30 p.m.

CHANGING  
CLIMATE/CHANGING  
WORLD LECTURE SERIES:  
Ryan Sporer (SOCl): "Living  
Off-Grid: A Reaction to a  
(Dis)Connected, Unsustainable  
and Unequal World"



**22-28**

#### Ward World Championship Education Conference

Roland E. Powell Convention  
Center, Ocean City, MD

WARD MUSEUM EVENT:  
Create award-winning  
carvings with World Champion  
and professional carvers. A full  
menu of one-, two-, three- and  
four-day classes are offered in  
conjunction with the Ward  
World Championship by such  
artists as Rich Smoker, Jerry  
Painter and more. \$

*Registration in advance is required;  
space is limited.*

**23 TUESDAY**

#### Passover Dinner

Commons, Bistro,  
4:30-7:30 p.m.

INTERNATIONAL DINNER  
SERIES: Please note, SU does  
not have a Kosher kitchen.

☸ \$

Look for information about "Jataka Tales"  
children's readings in the spring.



# april

## 24 WEDNESDAY

### Maryland Governor's Deputy Chief of Staff Jeannie Haddaway-Riccio

Guerrieri Academic Commons, Assembly Hall, 7 p.m.

#### FULTON ALUMNI LECTURE SERIES:

Haddaway-Riccio, deputy chief of staff for Governor Larry Hogan and SU alumna, discusses how her time as a student leader at SU prepared her for a career in government and politics. A native of the Eastern Shore, Haddaway-Riccio advises the governor on environmental policies and issues impacting the Chesapeake Bay.



## 25 THURSDAY

### Preserve the Baltimore Uprising: A Case Study in Public History Practice

Guerrieri Academic Commons, Assembly Hall, 5:30 p.m.

FULTON PUBLIC HUMANITIES LECTURE: Public historians strive to be both responsible and responsive. As scholars, we are responsible for upholding the highest standards of intellectual inquiry. As public servants, we are committed to responding to the needs, interests and desires of our audiences and stakeholders. Sometimes it is difficult to balance these two demands. In this talk, Denise Meringolo, associate professor at George Washington University, describes the processes, values and ethical considerations underlying the creation of Preserve the Baltimore Uprising, a crowd-sourced digital collection.

Sponsored by the Fulton Public Humanities Program and Fulton School Dean's Office.



## 25 THURSDAY

### A Taste of Tibet Dinner

Commons, Bistro, 4:30-7:30 p.m.

INTERNATIONAL DINNER SERIES: The dinner is held in conjunction with Tibetan Monk Residency, see page 20 for details. 🌸💰

## 26 FRIDAY

### Monique Thomas Senior Project Lecture Recital

Fulton Hall Room 112, 6 p.m.  
SU MUSIC CONCERT



Best in World, Decorative Miniature Wildfowl, Barn Owl by Ronnie Zint, Hillsboro, TX

## 26-28

### 49th Annual Ward World Championship Wildfowl Carving Competition & Art Festival

Roland E. Powell Convention Center, Ocean City, MD

Fri., 10 a.m.-5 p.m.

Sat., 9 a.m.-5 p.m. • Awards Ceremony, 5:30 p.m.

Sun., 10 a.m.-4 p.m.

WARD MUSEUM EVENT: Carvers and visitors from across the world convene for the most prestigious competition of contemporary wildfowl art. The event includes judging, benefit auction, classes, seminars, demonstrations, children's activities, and exhibitor booths of artisans and supplies. 💰

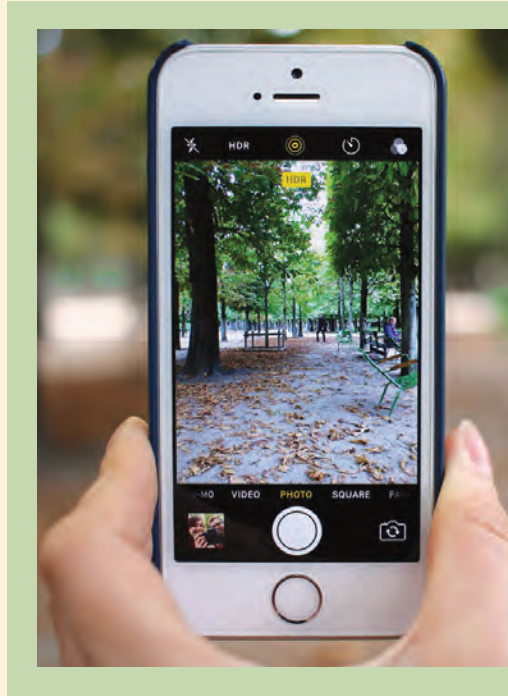


## 27 SATURDAY

**39th Annual Philosophy Symposium: The Laughing Animal**  
Conway Hall 153,  
9 a.m.-3 p.m.

**PHILOSOPHY SYMPOSIUM:** Aristotle famously defined laughter as an exclusively human trait, but how exactly is laughter, and humor more generally, a sign of what is either laudable or worrisome in our nature? Alumni, community members, faculty and current students come together for a day of inquiry, discovery and debate.

Featured presenters include Anca Parvulescu, Washington University in St. Louis, MO, author of *Laughter: Notes on a Passion*, and John Lombardini, William and Mary, author of *The Politics of Socratic Humor*. Explore the various philosophical, literary and political dimensions of our most joyous, uproarious, revolutionary trait.



## 27 SATURDAY

### Exploring Photography Workshop

Guerrieri Academic Commons,  
Nabb Center Classroom, 10:30 a.m.

**NABB CENTER EVENT:** SU professor and professional photographer Jeanne Anderton leads a workshop on the history and evolution of photography techniques. From smart phones to DSLRs, cameras have the same mechanics that enable the photographer to create their images. Explore the options available to photographers and how they might be more successful in taking photos. Included are discussions of composition, content, audience, software and alternates to digital photography. Participants are encouraged to participate in a photographic "scavenger hunt" with feedback and review of photos created.

*Open to all skill levels and camera types.*

*Limited number; registration required; call 410-543-6312 to register.*

## 29 MONDAY

### Confronting Inequality/ Achieving Sustainability

Fulton Hall 111, 7-8:30 p.m.

**CHANGING CLIMATE/CHANGING WORLD LECTURE SERIES:**  
Amal Ali (GEOG/URPL):  
"Urban Planning to Create Sustainable Communities"



## 29 MONDAY THROUGH MAY 17

### 60th Bi-Annual Senior Exhibitions: Graphic Design

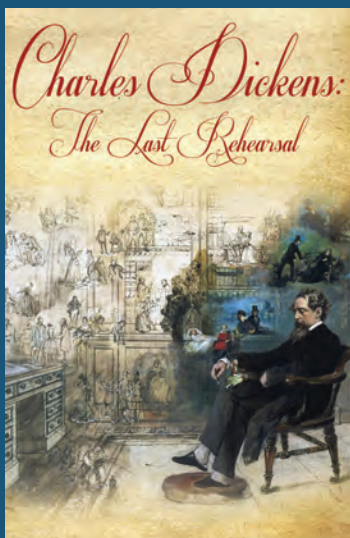
Fulton Hall, University Gallery  
Awards Reception: Fri., May 10, 5-7 p.m.  
SU ART GALLERIES EXHIBIT

## 27-28\*

### Charles Dickens: The Last Rehearsal

Fulton Hall, Black Box  
Theatre, 8 p.m. & \*2 p.m.

**SU THEATRE:** SU Theatre Professor Emeritus T. Paul Pfeiffer returns in the premiere performance of SU English Professor Emeritus Tony Whall's play in which the great author rehearses for his final reading, bringing to life many of his favorite characters and revealing, as he does, more of the drama of his own life than perhaps he imagines or intends. \$



# may

## 1 WEDNESDAY

### The Holocaust in History & Memory

Guerrieri Academic Commons, Assembly Hall, 7 p.m.

FULTON PUBLIC HUMANITIES LECTURE: To mark Holocaust Memorial Day, or Yom HaShoah, Maarten Pereboom, dean of the Fulton School of Liberal Arts, and Rabbi Arnold Bienstock discuss the persecution and genocide of the European Jews and other groups during the Nazi era, the legacy of these crimes against humanity, and the enduring challenges of racism and discrimination.

Sponsored by the Fulton Public Humanities Program and Fulton School Dean's Office.



## 1 WEDNESDAY

### Scarab Launch Featuring Amber Sparks

Perdue Hall 156, 8 p.m.

WRITERS ON THE SHORE:

Sparks is the author of the short story collection *The Unfinished World and Other Stories*, which has received praise from *The New York Times*, *The Washington Post* and *Paris Review*, among others. She is also the author of a previous short story collection, *May We Shed These Human Bodies*, as well as the co-author of a hybrid novella with Robert Kloss and illustrator Matt Kish, *The Desert Places*. She's written numerous short stories and essays that have been featured in various publications and across the web – find them at [amvernoellesparks.com](http://amvernoellesparks.com) and say hi on Twitter @amvernoelle. SU students also read work from the new issue of *The Scarab*.



## 1 WEDNESDAY

### Flavors of the Caribbean Islands Dinner Featuring the Steel Kings

Commons, Bistro, 4:30-7:30 p.m.

INTERNATIONAL DINNER SERIES: The Steel Kings Steel Drum Band was formed over 20 years ago by Terrence Cameron. His music and skills are well known throughout the U.S. and the Caribbean. The band's instrumentation consists of various types of steel drums, keyboard, vocals and other percussion instruments. ☆ \$

## 3 FRIDAY

### SU on the Road: Smith Island Boat & Walking Tour

Leave Crisfield City Dock: 9 a.m.;

Return: 4:30 p.m.

CELL BUS TRIP: Tour Smith Island with environmental writer and SU professor Tom Horton. Visit with residents, learn the history of Smith Island cake, and discuss the extraordinary environment and culture of this island in the Chesapeake. \$

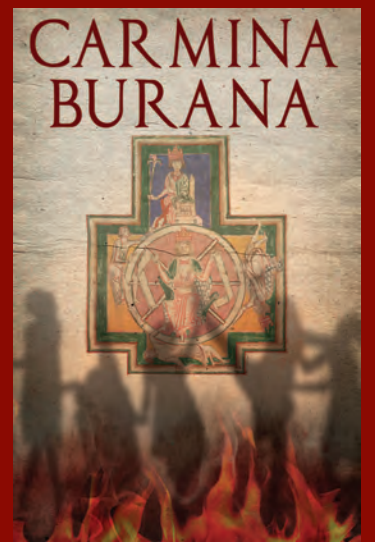
## 4 SATURDAY

### Salisbury & University Choroales Presents Carmina Burana

Holloway Hall Auditorium, 7:30 p.m.

SU MUSIC CONCERT: *Cantiones Profanae* (Songs from *Beuren Profane Songs*), a "scenic cantata," is one of the most renowned compositions of Carl Orff. The texts are from the 1847 edition of the *Benediktbeuren* (Benedictine Monastery) manuscript published by Johann Andreas Schmeller.

Performances feature the Salisbury Choroales, soloists, orchestra, children's choir and dancers. Directed by William M. Folger and John Wesley Wright. \$



## 5 SUNDAY

### Madrigal Choir

Holloway Hall, Great Hall, 4 p.m.

SU MUSIC CONCERT



## 6 MONDAY

### Confronting Inequality/Achieving Sustainability

Fulton Hall 111, 7-8:30 p.m.

CHANGING CLIMATE/CHANGING WORLD LECTURE SERIES: See Jan. 28 for details.

## 9 THURSDAY

### Jazz Ensemble

Holloway Hall Auditorium, 7:30 p.m.

SU MUSIC CONCERT

## 7 TUESDAY

### Salisbury Pops

Holloway Hall Auditorium, 7:30 p.m.

SU MUSIC CONCERT



## 9 THURSDAY

### **LGBTQ Film Festival: Women on Fire**

Fulton Hall 111, 7 p.m.

**FULTON PUBLIC HUMANITIES FILM:** The film follows Brooke Guinan, the first openly transgender firefighter in New York City. A character-driven documentary, the film follows Brooke as she sets out to challenge perceptions of what it means to be transgender in American today. See April 11 and June 13 for other films.

## 10 FRIDAY

### **Feature Friday: Dave Raizen and Jerry Schnickelfritz**

The Brick Room, 116 N. Division St., 6-7 p.m.

**CELL CONCERT:** Members of the SU community present live music. Must be 21+ to enter.

## 10 FRIDAY

### **PACE Showcase**

Guerrieri Academic Commons, Assembly Hall, 1-2:30 p.m.

**PACE SPECIAL EVENT:** SU's Institute for Public Affairs and Civic Engagement (PACE) highlights student and faculty engagement efforts, particularly those involving community action.



## 10 FRIDAY

### **Piano & Strings Concert**

Holloway Hall, Great Hall, 2 p.m.

SU MUSIC CONCERT



## 11 SATURDAY

### **Behind-the-Scenes Tour of the Nabb Research Center**

Guerrieri Academic Commons, Nabb Center Classroom, 10:30 a.m.

**NABB CENTER EVENT:** Join Exhibits and Artifacts Curator Janie Kreines for a behind-the-scenes tour of the Nabb Research Center facility, including the state-of-the-art storage rooms! This is a rare opportunity for participants to see artifacts that are not on view to the public.



## 11 SATURDAY

### **Rachmaninoff's Realm Featuring Ernest Barretta, Piano**

Holloway Hall Auditorium, 7:30 p.m.

**SALISBURY SYMPHONY ORCHESTRA:** Recognized, at a young age, as a pianist "in command of his instrument and the music at every intricate turn ... his technical expertise, stage presence and sensitivity to the music are truly inspiring in so youthful a pianist" (*McKeesport Daily News*), American pianist Barretta continues to enjoy success as both soloist and chamber musician. He has performed extensively throughout the U.S. and abroad, as soloist with the St. Petersburg Symphony in Russia, the National Gallery Orchestra of Washington, D.C. and the Mid-Atlantic Symphony Orchestra; this is his second appearance with the Salisbury Symphony Orchestra. Barretta additionally devotes a great deal of his time to teaching; the rewarding task of working with emerging talent is an important part of his life as a musician. He is currently on the piano faculty of the Juilliard School of Music, pre-college division, having served previously on the piano faculties of The Peabody Conservatory and Towson University. He also enjoys working as conductor and composer, and is music director of the several ensembles that make up the music program at St. Joseph, Fullerton, in Baltimore, MD. **\$**

# may

## 12 SUNDAY

### Lance Fisher & Saeshan Carter Joint Junior Recital

Holloway Hall, Great Hall,  
7 p.m.

SU MUSIC CONCERT

## 13 MONDAY

### Confronting Inequality/ Achieving Sustainability

Fulton Hall 111, 7-8:30 p.m.

CHANGING  
CLIMATE/CHANGING  
WORLD LECTURE SERIES:  
Wicomico Interfaith Partners  
Panel: Members of faith  
communities discuss  
inequality and sustainability.

## 14 TUESDAY

### The Fanatical Sabbatical: Lessons Learned from Publishing My First Book

Conway Hall 152, 3:30 p.m.

FULTON FACULTY  
COLLOQUIA: Presented by  
David Burns, associate  
professor of communication  
arts. See Feb. 5 for series  
details.

## 14 TUESDAY

### PRESTO Recitals

Holloway Hall, Great Hall,  
5 p.m. & 7 p.m.

CELL CONCERT: Students of  
the PRESTO music program  
perform.

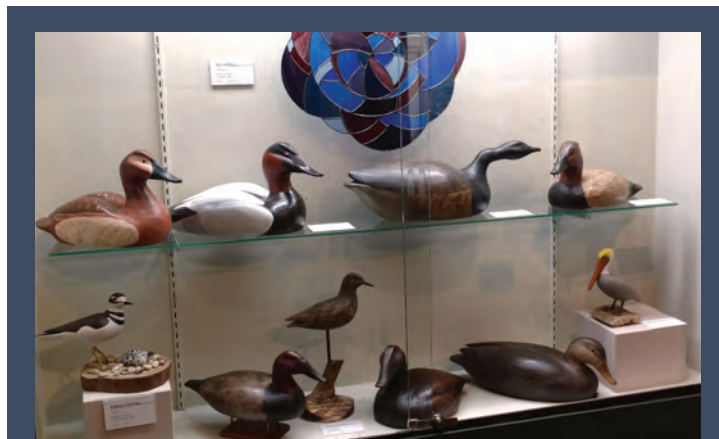


## 16 THURSDAY

### Youth Symphony Orchestra

Holloway Hall Auditorium,  
7:30 p.m.

SU MUSIC CONCERT



## 17 FRIDAY

### THROUGH SEPTEMBER 29

#### Skilled Service: The Volunteer Art Show

Welcome Gallery

Reception: Fri., May 17, 5-7 p.m.

WARD MUSEUM EXHIBIT: Many of the volunteers at the  
Ward Museum are accomplished artists themselves. The  
exhibit features a collection of works made using a variety  
of media and techniques by our dedicated volunteers. \$



## 16 THURSDAY

### Discover SU: SU Arboretum

Blackwell Hall, 4:30-5:30 p.m.

CELL EVENT: Guided by  
Will Lowery, Horticulture

RSVP appreciated:  
[www.salisbury.edu/cell](http://www.salisbury.edu/cell)



## 17 FRIDAY

### Salisbury Affordable Art Fair

SU Art Galleries | Downtown, 5-8 p.m.

SU ART GALLERIES SPECIAL EVENT: Looking to collect art but  
not sure where to start? Looking for a unique gift? Looking to  
support our local economy? Look no further! Join us for  
Salisbury's first art fair. Artists from around the region sell  
one-of-kind works of art at affordable prices!

## 19 SUNDAY

### SU Children's Choir

Holloway Hall Auditorium, 2:30 p.m.

SU MUSIC CONCERT: Under the direction of Alice Winfield. \$

# june

## 13 THURSDAY

### LGBTQ Film Festival:

#### Divine Divas

Fulton Hall 111, 7 p.m.

FULTON PUBLIC

HUMANITIES FILM: The



Divine Divas are the icons of the first generation of Brazilian transvestite artists in the 1960s. The film

shows the intimacy, the talent and the stories of a generation that revolutionized the sexual behavior and defied the morals of a time. See April 11 and May 9 for other films.

## 21 FRIDAY

THROUGH AUGUST 17

### Carl Goldhagen: The Long View - Selected Works 1970s to the Present

SU Art Galleries | Downtown  
Reception: 3rd Friday, June 21, 5-7 p.m.

SU ART GALLERIES EXHIBIT: Goldhagen, who taught at SU from 2003 to 2017, has maintained studios in NYC since the late 1970s and in Girdletree, MD, since 2010. This show is a survey of works illustrating Goldhagen's broad approach to art making in painting, photography, drawing and sculpture. His work has cycled through a number of styles over the years; pattern and decoration, landscape and figuration, most recently, his ongoing *Little House Series*.



# august



Art in Nature 2018 - Grand Champion • Wait for Me by Kathrin Swoboda

## 9-11

### Ninth Annual Art in Nature Photo Festival

Ward Museum

Fri.-Sat., 10 a.m.-5 p.m.

Sun., 10 a.m.-4 p.m.

WARD MUSEUM EVENT: Throughout the weekend, photographers of all skill levels are invited to participate in seminars and workshops offered by a selection of the region's top nature photographers. Additionally, photographers are encouraged to enter their photos in one of the competition's three levels: professional, amateur or youth.

# contacts & categories

All events are listed here by their sponsoring program/department. Find out the date of the event in which you are interested and look to the calendar for more information. Contact information is provided in case you have questions.

## Adventures In Ideas: Humanities Seminar • 410-543-6450

March 2 .....Thoreau, Adventure, Anarchism & Zen with Dr. Donald Whaley

## African American History Month • 410-548-3836

Feb. 7 .....Taking Leave: How Fugitive Slaves Influenced the Debate Over the Future of Slavery  
Feb. 8 .....Soul Food Dinner Featuring Bernard Sweetney  
Feb. 8 .....Spoken Word & Open Mic Night  
Feb. 21 .....Birthright Citizens: A History of Race & Rights in Antebellum America  
Feb. 28 .....Talking Black in America

## SU Art Galleries • 410-548-2547

### EXHIBITS

Through March 29 .....Sabrina Ratté: Shifting Landscapes  
Jan. 28-April 13 .....Cultured (Reception: March 8)  
Feb. 15-March 30 .....Methods: 2019 Art Department Faculty Exhibition (Reception: Feb. 15)  
April 11-July 27 .....David First: Dave's Waves Sonic Restaurant (Reception/Performance: April 11)  
April 19-May 7 .....60th Bi-Annual Senior Exhibitions: Fine Arts (Reception: April 26)  
April 29-May 17 .....60th Bi-Annual Senior Exhibitions: Graphic Design (Reception: May 10)  
June 21-August 17 .....Carl Goldhagen: The Long View - Selected Works 1970s to the Present (Reception: June 21)

### ARTIST TALKS

March 14 .....Olivia Kim (Residency: March 10-15)  
March 28 .....Sabrina Ratté

### EVENTS

Feb. 1 .....Crit Circle with Jayme McLellan  
Feb. 21 .....Seeing Sound Series #6  
April 6 .....Undercurrents 01  
May 17 .....Salisbury Affordable Art Fair

## Center for Extended & Lifelong Learning • 410-543-6090

March 2-15 .....Editing Drone Video with Jesse Campbell (Saturdays)

### SU ON THE ROAD

Feb. 28 .....Newseum Museum, Washington, D.C.  
March 20 .....American Visionary Museum, Baltimore  
April 4 .....National Mall, Washington, D.C.  
May 3 .....Smith Island Boat & Walking Tour

### SU @ THE BEACH

Feb. 1 .....SU Faculty Lecture Series: Improving STEM Outreach and Education via ThinSats & Augmented Reality  
Feb. 7-March 14 & ...Writing Your Memoir I with Emily Rich (Thursdays, 2 sessions)  
March 28-May 2  
Feb. 8-March 15 & ...Writing Your Memoir II with Emily Rich (Fridays, 2 sessions)  
March 29-May 3  
Feb. 8 .....SU Faculty Lecture Series: Making the Past Personal: What Does DNA Tell Us About Our Ancestors?  
Feb. 13-27 .....Shakespeare Revealed with T. Paul Pfeiffer (Wednesdays)  
Feb. 15 .....SU Faculty Lecture Series: King James & the North Berwick Witch Trials of Scotland  
Feb. 22 .....SU Faculty Lecture Series: Benefits of Employing High-Fidelity Mannequins for Clinical Simulations  
March 1 .....SU Faculty Lecture Series: The Gut-Brain Connection: Its Role in Immunity, Mental Health & Behavior  
March 8 .....SU Faculty Lecture Series: Poetry Deconstructed: The Bones We Don't See  
March 12-April 2 .....War of Words: Media Coverage of Conflicts & Causes from My Lai to #MeToo (Tuesdays)  
March 15 .....SU Faculty Lecture Series: Detecting Fake from Factual: A Common Sense Approach to Consuming Mass Media  
March 29 .....SU Faculty Lecture Series: Sculpture & Movement: Animating the Unmoving  
April 5 .....SU Faculty Lecture Series: Respectability Politics & (un)Civil Disobedience  
April 12 .....SU Faculty Lecture Series: Harvesting Sunlight with Advances in Green Nanotechnology

April 19 .....SU Faculty Lecture Series: Using Geology & Remote Sensing to Reconstruct Past Environments Along the Nanticoke River During John Smith's Voyage

### LIGHTHOUSE LITERARY GUILD

Feb. 4 .....Understanding Poetry with Nancy Mitchell  
Feb. 6-March 13 .....Writing Your Travel Story with Mindie Burgoyne (Wednesdays)  
Feb. 7-28 .....Writing Your Memoir with Pat Valdata (Thursdays, Level 1 1st session, Level 2 2nd)  
March 7-28  
Feb. 11-March 18 & ..Poetry Writing with Nancy Mitchell (Mondays)

### PRESTO MUSIC

Feb. 11-May 10 .....PRESTO & PRESTO Plus Lessons  
May 14 .....PRESTO Recital

### FEATURE FRIDAYS CONCERTS

Feb. 8 .....Freedom Sing-Along with John Wright & Wright Studio Vocalists  
March 8 .....Red Letter Day  
April 12 .....Sachi Murasugi & Jeff Schoyen  
May 10 .....Dave Raizen and Jerry Schnickelfritz

### DISCOVER SU TOURS

Jan. 17 .....Brown & Church Carillon  
Feb. 21 .....Fulton Hall Arts & Music  
March 21 .....University Archives & Special Collections  
April 18 .....Richard A. Henson School of Science & Technology  
May 16 .....SU Arboretum

## Changing Climate/Changing World Lecture Series • 410-543-6374

Jan. 28-May 6 .....Confronting Inequality/Achieving Sustainability (Mondays)

## Cultural Affairs Office • 410-543-6271

Feb. 6 .....The Crossing Concert  
Feb. 12 .....Imago Theatre's Frogz! Performance  
Feb. 19 .....Bridgman Packer Dance: Voyeur & Truck  
Feb. 23 .....Lift Me Up! Mid-Atlantic Gospel Masters:  
Ingramettes & Northern Kentucky Brotherhood Singers  
March 11 & 12 .....Chinese Puppet Workshop Featuring Puppet Artist Chen Lihui  
April 13 .....National Cherry Blossom Festival Parade 2019, Washington, D.C. Bus Trip

### TIBETAN MONKS' RESIDENCY

April 23-27 .....The Mystical Arts of Tibet: Mandala Sand Painting  
April 23 .....Opening Ceremony & Drawing of the Lines  
April 23-27 .....Mandala Construction  
April 27 .....Completed Mandala Viewing; Consecration & Closing Ceremony; Dispersal Ceremony  
April 23 .....The Meaning of the Mandala Lecture  
April 24 .....Monastic Life Lecture & Demo  
April 25 .....International Dinner Series: A Taste of Tibet  
April 26 .....Meditation for Focus & Stress Relief Lecture

### PETER & JUDY JACKSON CHAMBER MUSIC FESTIVAL

March 25 .....The Morgenstern Trio Concert  
March 27 .....Russian String Orchestra Concert

### WROTEN PIANO CONCERT SERIES

April 12 .....Brazilian Pianist & Composer André Mehmani Concert

### BRIDGES TO THE WORLD INTERNATIONAL FILM SERIES

Feb. 4 .....Children from the Hotel America (Lithuania)  
Feb. 11 .....The Band's Visit (Israel)  
Feb. 18 .....The Children of Genghis (Mongolia)  
Feb. 25 .....The Train Carrying Salt & Sugar (Mozambique)  
March 4 .....Film from Chile

### INTERNATIONAL DINNER SERIES

Feb. 5 .....Chinese New Year Dinner Featuring Wong's Chinese Lion Dancers  
Feb. 8 .....Soul Food Dinner Featuring Bernard Sweetney

March 5 .....	Mardi Gras Dinner Featuring Such Fools
March 13 .....	St. Patrick's Day Dinner Featuring the Folk Heroes
March 27 .....	Russian Dinner
April 21 .....	Easter Dinner
April 23 .....	Passover Dinner
April 25.....	A Taste of Tibet Dinner
May 1.....	Flavors of the Caribbean Islands Dinner Featuring the Steel Kings

### Environmental Studies Colloquium Series • 410-543-8105

Feb. 27 .....	Designing Cost-Efficient Surveillance Systems for Early Detection of Invasive Species
March 6 .....	Island Out of Time Screening
April 17.....	Water Markets: A High-Resolution View from California

### Fulton Alumni Lecture • 410-543-6450

April 24.....	Maryland Governor's Deputy Chief of Staff Jeannie Haddaway-Riccio
---------------	---

### Fulton Faculty Colloquia • 410-543-6450

Feb. 5 .....	Domains of Caregiver Stress Among Parents of Children with Disabilities: Relations to Physical and Mental Health Outcomes
March 5 .....	Asian Peacebuilding: Theory & Practice
April 16.....	American Empire & Trump
May 14 .....	The Fanatical Sabbatical: Lessons Learned from Publishing My First Book

### Fulton Public Humanities Series • 410-543-6245

Feb. 7 .....	Taking Leave: How Fugitive Slaves Influenced the Debate Over the Future of Slavery
April 12 .....	The Living Art of Islamic Calligraphy
Feb. 21 .....	Aboard the Constitution: Black Sailors & Citizenship at Sea
March 5 .....	"Courage, endurance & self-sacrifice of the highest possible order": British Women Spies of World War II
April 25.....	Preserve the Baltimore Uprising: A Case Study in Public History Practice
May 1 .....	The Holocaust in History & Memory

### LGBTQ FILM FESTIVAL

April 11 .....	The Miseducation of Cameron Post
May 9.....	Women on Fire
June 13 .....	Divine Divas

### History Department Event • 410-543-6245

March 29-31 .....	Mid-Atlantic Ottoman Studies Workshop
-------------------	---------------------------------------

### International Francophonie Month • 410-543-6341

March 5 .....	Comédie Surprise!
March 7 .....	Studying in France: A Student's Perspective
March 11 .....	Avril ou le monde truqué (April & the Extraordinary World) Screening
March 13 .....	French Conversation Hour
March 25 .....	French Conversation Hour
March 27 .....	Visages, Villages (Faces, Places) Screening

### Music, Theatre & Dance Department • 410-548-5588

#### MUSIC PROGRAM

Feb. 20 & 21 .....	Singers' Showcase
Feb. 22 .....	The Life of Charles Albert Tindley & Hymns Which Touched Many Souls: Calvin Collins Senior Project Lecture Recital
Feb. 27 .....	Allegheny Ensemble Presents Salut d'Amour
March 6 .....	SU Trombone Day
March 30 .....	The Jerry Tabor Ear Alliance
April 4-6 .....	5th Annual Salisbury Percussion Festival 2019 (SPF 19)
April 4.....	An Evening of Percussion
April 5: .....	The Kraken Quartet
April 6: .....	World Drum Experience
April 6.....	Jeffrey Todd Senior Recital
April 11 .....	New Music Salisbury

April 14 .....	From Russia with Music: Beautiful Stories & Heritage of Russian Composers
April 26 .....	Monique Thomas Senior Project Lecture Recital
May 4.....	Salisbury & University Chorales Presents Carmina Burana
May 5.....	Madrigal Choir
May 7 .....	Salisbury Pops
May 9.....	Jazz Ensemble
May 10.....	Piano & Strings Concert
May 12.....	Lance Fisher & Saeshan Carter Joint Junior Recital
May 16.....	Youth Symphony Orchestra
May 19.....	SU Children's Choir

### BOBBI BIRON THEATRE

April 4-7 & 11-14....	Peter & the Starcatcher
April 27-28 .....	Charles Dickens: The Last Rehearsal

### SU DANCE COMPANY

April 11-14 .....	Spring Dance Concert
-------------------	----------------------

### Nabb Center • 410-543-6312

#### EXHIBITS

Ongoing.....	Delmarva: People, Place & Time
Jan. 28-July 26 .....	If Objects Could Talk: The History Behind Eastern Shore Artifacts (Reception: Feb. 7)
Jan. 28-July 26 .....	Captured in Time: Glimpses of the Eastern Shore through the Camera Lens (Reception: Feb. 21)

#### EVENTS

April 4 .....	Hidden Stories of Objects from the Chesapeake Bay Maritime Museum Collection
April 11 .....	Photographic Innovation and the Delmarva Peninsula Lecture
April 27 .....	Exploring Photography Workshop
May 11 .....	Behind-the-Scenes Tour of the Nabb Research Center

### PACE (Institute for Public Affairs and Civic Engagement) 410-677-5045

Feb. 27 .....	Building Community: We Can All Make a Difference Lecture
May 10 .....	PACE Showcase

### Philosophy Department Event • 410-677-5070

April 27 .....	39th Annual Philosophy Symposium: The Laughing Animal
----------------	---

### Salisbury Symphony Orchestra • 410-543-8366

March 9 .....	On The Double Featuring Duo MemDi, Violin & Piano
May 11 .....	Rachmaninoff's Realm Featuring Ernest Barretta, Piano

### Salisbury University Women's Forum • womensforum@salisbury.edu

March 8 .....	International Women's Day Conference: Seeking Justice, Balancing The Scales
---------------	---

### Ward Museum • 410-742-4988

#### EXHIBITS

Through Feb. 17 .....	A Century of Conservation: The 1918 North American Migratory Bird Treaty
Feb. 22-April 14 .....	How We Live With Nature: Student Art Show (Reception: Feb. 22)
Feb. 22-May 12 .....	A Practiced Eye: Robert Hines (Reception: Feb. 22)
April 19-Sept. 15.....	Chesapeake Visual Icons (Reception: April 19)
May 17-Sept. 29.....	Skilled Service: The Volunteer Art Show (Reception: May 17)

#### EVENTS

April 22-28.....	Ward World Championship Education Conference
April 26-28.....	49th Annual Ward World Championship Wildfowl Carving Competition & Art Festival
Aug. 9-11 .....	Ninth Annual Art in Nature Photo Festival

### Writers On The Shore • 410-543-6250

Feb. 13 .....	Ryan Habermeyer
March 6.....	Nancy Mitchel
April 17 .....	Melissa Crowe
May 1 .....	Scarab Launch Featuring Amber Sparks

# general info, hours & costs

## To make your visit to SU enjoyable, here are a few helpful hints:

- Follow SU on social media for all the latest:



- INFORMATION: If you need more information, want to confirm a date or have questions:

- Call the cultural events hotline at 410-677-4685.
- Visit: [www.salisbury.edu/newsevents](http://www.salisbury.edu/newsevents)

- ARTS MINUTE: You can receive the SU Arts Minute weekly email. Just send an email requesting to join the mailing list to: [publicrelations@salisbury.edu](mailto:publicrelations@salisbury.edu)

- CULTURAL AFFAIRS EMAIL: You can receive the This Week at SU Cultural Affairs weekly email. Just send an email requesting to join the mailing list to: [culturalaffairs@salisbury.edu](mailto:culturalaffairs@salisbury.edu)

### Office of Cultural Affairs

For organization or event information call: 410-543-6271 or 410-548-5697  
[www.salisbury.edu/culturalaffairs](http://www.salisbury.edu/culturalaffairs)

Facebook: Cultural Affairs at Salisbury University  
Twitter: @SU\_CulAffairs  
[jekrell-salgado@salisbury.edu](mailto:jekrell-salgado@salisbury.edu)  
[culturalaffairs@salisbury.edu](mailto:culturalaffairs@salisbury.edu)

### ■ Cherry Blossom Festival Bus Trip

Sign up at Guerrieri Student Union Information Desk

- SU Students, Faculty, Staff & Alumni: \$35 (sign up begins Mon., March 11)
- Community: \$45 (sign up begins Mon., March 18)

Cost of tickets must be paid in full at the time of sign-up. No refunds for cancellations unless the seat is filled. Seats may not be transferred.

### ■ Cultural Laureate Program

SU students are invited to participate in the Cultural Laureate Program by attending at least five different select cultural events per semester. For information visit: [www.salisbury.edu/culturalaffairs/clp](http://www.salisbury.edu/culturalaffairs/clp)  
[culturalaffairs@salisbury.edu](mailto:culturalaffairs@salisbury.edu)

### Adventure in Ideas: Humanities Seminar Series

Cost (including continental breakfast and lunch) \$30  
*Sponsored by the Fulton School of Liberal Arts and the Whaley Family Foundation.*  
For more information contact the Fulton School Dean's Office, Donna Carey: 410-543-6450 or [dmcarey@salisbury.edu](mailto:dmcarey@salisbury.edu)

### SU Art Galleries

- University Gallery  
Located in Fulton Hall, just off the main lobby in Room 109  
410-548-2547
- SU Art Galleries | Downtown  
212 West Main Street  
Gallery Building  
410-548-2401
- Electronic Gallery  
Conway Hall 128

For SU Art Galleries hours, visit or call:  
[www.salisbury.edu/universitygalleries](http://www.salisbury.edu/universitygalleries)

### Center for Extended & Lifelong Learning

Blackwell Hall  
410-543-6090  
[CELL@salisbury.edu](mailto:CELL@salisbury.edu)  
[www.salisbury.edu/cell](http://www.salisbury.edu/cell)

### SU on the Road

- Washington, D.C., Newseum Museum: \$70
- American Visionary Art Museum, Baltimore: \$60
- Washington, D.C., National Mall: \$50
- Smith Island Boat & Walking Tour: \$180

### SU @ the Beach

- SU Faculty Lecture Series: \$8 per lecture
- Shakespeare Revealed: \$30
- War of Words: \$30
- Writing Your Memoir I with Emily Rich: \$60
- Writing Your Memoir II with Emily Rich: \$60

### Lighthouse Literary Guild

- Poetry Writing with Nancy Mitchell: \$60
  - Writing Your Memoir with Pat Valdata: \$80
  - Writing Your Travel Story with Mindie Burgoyne: \$60
- Editing Drone Video with Jesse Campbell: \$69

### Institute for Retired Persons

410-742-8310  
[www.salisbury.edu/irp](http://www.salisbury.edu/irp)

### International Dinner Series

Commons, Bistro, 4:30-7:30 p.m.  
Most meals have entertainment from 5-7 p.m.  
Cost (plus tax): \$14.20;  
children (5 & under) \$8.55

### Music, Theatre & Dance Department Ticketed Events

#### ADMISSION

- \$12 adults
- \$9 seniors 60+, SU alumni & all students (ID required)
- \$5 non-SU students
- \$3 with SU Gull Card
- Free for children under 12
- Groups of 10 or more call for reservations and pricing

#### SPECIAL NEEDS PATRONS

- Please call the Box Office in advance to request special seating

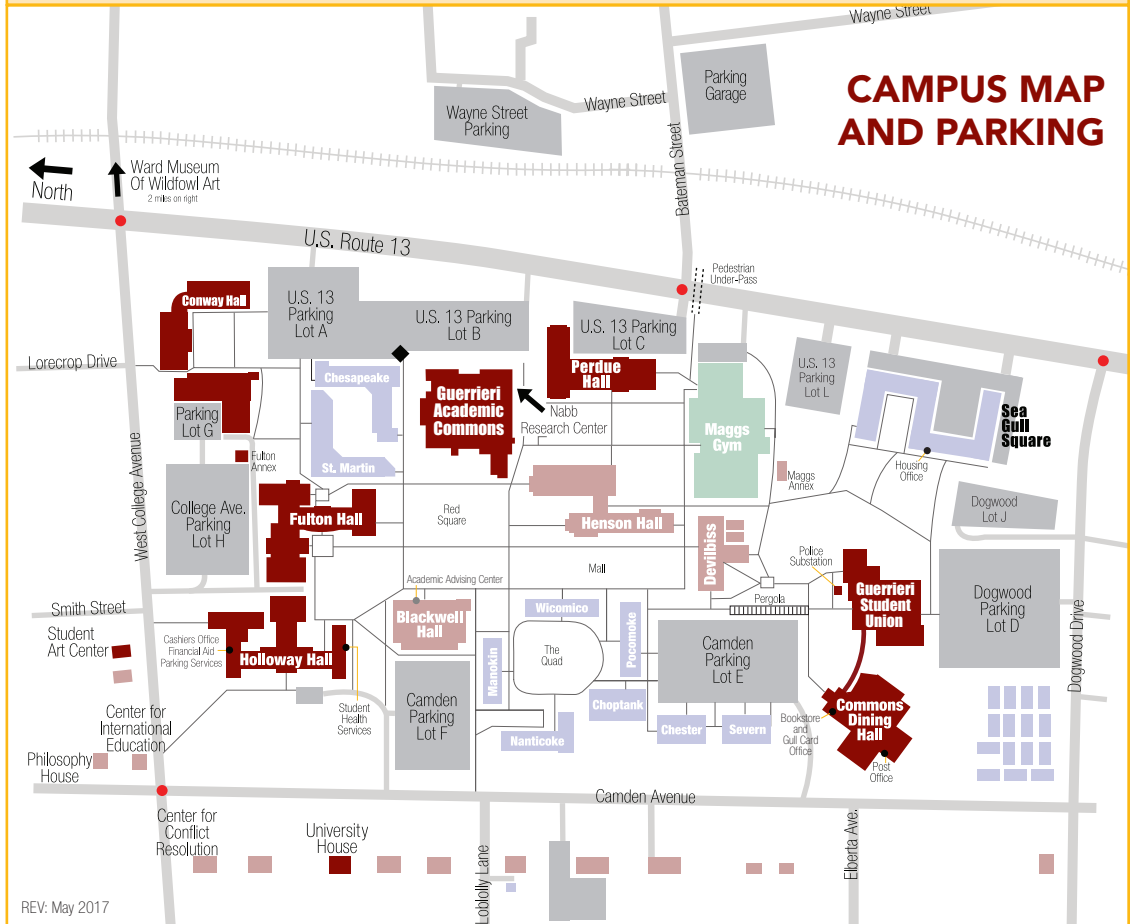
#### TO PURCHASE TICKETS

- Cash, Visa, MasterCard and checks payable to Salisbury University accepted
- Online 24/7  
[www.salisbury.edu/performingarts](http://www.salisbury.edu/performingarts)  
Ticket operations fee applied
- By Phone: 410-543-6228
- At the Box Office  
Fulton Hall 100  
Monday-Friday,  
10 a.m.-4 p.m.

#### PLEASE ARRIVE ON TIME!

- For Black Box Theatre performances, guests who already have tickets are encouraged to arrive 30 minutes prior to the scheduled curtain time. All late seating is at the discretion of theatre management.

The buildings highlighted in red are the facilities that most frequently host cultural events.  
Please note adjacent parking lots for ease of access. Visitors must display a **visitor parking pass**, which may be obtained free of charge from the Parking Services Office at 410-543-6338 or online at: [www.salisbury.edu/parking/visitors.html](http://www.salisbury.edu/parking/visitors.html)



REV: May 2017

**Nabb Research Center  
for Delmarva History & Culture**  
Guerrieri Academic Commons,  
Fourth Floor  
Mon.: 10 a.m.-6 p.m.  
Tues.-Fri.: 10 a.m.-4:30 p.m.  
Sat. (Feb. 8-May 18):  
10 a.m.-2 p.m.  
410-543-6312

**Salisbury Symphony Orchestra**  
ADMISSION:  
■ \$25 adults  
■ \$20 seniors 60+  
■ \$10 SU faculty/staff  
■ \$5 all students  
Visit [www.SalisburySymphonyOrchestra.org](http://www.SalisburySymphonyOrchestra.org)  
Click on the "Purchase Tickets" button  
Tickets also are available at the Guerrieri Student Union Information Desk  
410-543-8366

**Ward Museum of Wildfowl Art**  
909 S. Schumaker Drive  
Salisbury, MD; 410-742-4988  
HOURS  
■ Mon.-Sat.: 10 a.m.-5 p.m.  
■ Sun.: Noon-5 p.m.

ADMISSION  
■ SU Faculty, Staff & Students:  
Free (w/SU ID)  
■ Adults: \$7  
■ Seniors (60 & over): \$5  
■ Students (K-12): \$3  
■ College (w/college ID): \$3  
■ Adults (w/AAA card): \$6  
■ Family Rate (parents &  
children 18 & under): \$17  
WARD WORLD  
CHAMPIONSHIP ADMISSION  
■ Multi-Day Pass: \$10  
■ Seniors & Students: \$8  
■ Children under 12 free  
(with adult)  
■ Group rate for 6 or more:  
\$6 per person  
■ Living Legends Dinner  
Tickets: \$65 for members,  
\$75 for non-members

**The Women's Circle  
of Salisbury University**  
For organization and event  
information:  
410-677-0292  
[skgordy@salisbury.edu](mailto:skgordy@salisbury.edu)  
[www.facebook.com/suwomenscircle](http://www.facebook.com/suwomenscircle)

**Institute for Public Affairs  
and Civic Engagement (PACE)**  
PACE is a non-partisan institute  
committed to undergraduate  
learning that sparks interest in  
public affairs and civic  
engagement, and acts as a  
resource center for local  
government, nonprofits and  
public groups.  
[www.salisbury.edu/pace](http://www.salisbury.edu/pace)



**World Artists Experiences, Inc.**  
SU is affiliated with World Artists Experiences, Inc., a non-profit organization committed to developing the vital role of the arts in building bridges of international understanding. By providing educational experiences with world artists in schools, colleges and communities, WAE seeks to foster an appreciation for the rich diversity and cultural commonalities of the world's citizens. Learn more at [www.WorldArtists.org](http://www.WorldArtists.org). For information about being part of SU's Ambassador Program, call 410-543-6271. ★



**Delmarva Public Radio**  
With exciting new programs and a bold new format, Delmarva Public Radio has rededicated itself to providing the best news, music, arts and culture from Delmarva – and around the world.  
[delmarvpublicradio.net](http://delmarvpublicradio.net)



WSCL 89.5 Fine Arts & Culture  
WSDL 90.7 Rhythm & News

SU is an Equal Opportunity/AA/Title IX university and provides reasonable accommodation given sufficient notice to the University office or staff sponsoring the event or program. For more information regarding SU's policies and procedures, please visit [www.salisbury.edu/equity](http://www.salisbury.edu/equity).

Events are subject to change; for updates and corrections, visit: [www.salisbury.edu](http://www.salisbury.edu)

# BRIDGMAN | PACKER DANCE



**19** FEBRUARY  
TUESDAY

**Bridgman Packer Dance:  
Voyeur & Truck**  
Holloway Hall Auditorium,  
7 p.m.  
See p. 8 for details. 📍