

# PANORAMA

A Cultural Events Publication  
of Salisbury University  
SPRING 2017



**African American History**  
SU's annual celebration  
continues • see p. 9



**Art in Nature**  
Photographers of all  
levels compete  
Aug. 11-13



**Trombone Day**  
Metropolitan Opera  
Orchestra trombonist  
performs • March 7



**In Training**  
Media artist Liss LaFleur  
presents a solo exhibit  
March 30-June 10

# welcome

## A Message from the President

Salisbury University has one of the most active and varied cultural programs on the Eastern Shore ... and you are invited to take advantage of our offerings. As *A Maryland University of National Distinction*, SU prides itself on providing high-quality cultural opportunities to our students and community.

The Expressions of Spirituality series continues with two very different groups who embody the physical and mental discipline of their spiritual beliefs: the Shaolin Warriors, who share the artistry of martial arts, and the Tibetan Monks, who again will construct a mandala.

Our annual celebration of African American History Month focuses on education with a keynote lecture on "Cross-Cultural Education and African American Museums." Additional events hosted by the Nabb Center provide the perfect opportunity to check out the Patricia R. Guerrieri Academic Commons, including an exhibit highlighting "African American Education on the Eastern Shore" and a lecture on "Tracing African American Genealogy."

SU is proud to be the home of the acclaimed Salisbury Symphony Orchestra, and the always-active Department of Music, Theatre and Dance presents an engaging roster of spring performances – capped off by retiring theatre faculty Paul Pfeiffer's critically acclaimed, one-man play *Apology for the Life of an Actor*. SU Art Galleries continues to welcome cutting-edge art and artists to the Eastern Shore. Our Ward Museum of Wildfowl Art hosts its annual World Championship competition and a series of open houses to showcase its new facilities. Want to learn more about our University? Check out the Discover SU tour series organized by our Center for Extended and Lifelong Learning.

Browse through *Panorama* and find all that is waiting for you at Salisbury University. I hope to see you soon at one of our many events!



Janet Dudley-Eshbach, Ph.D.  
*President, Salisbury University*



# SPRING SEMESTER CULTURAL SERIES

In spring 2017, Salisbury University's Cultural Affairs Office continues exploring the artistic "Expressions of Spirituality," the relationship between spiritual expression, creativity and the arts.

For the sixth time, the Tibetan monks from the famed Drepung Loseling Institute will be in residence at SU to create a beautiful sand mandala. Created with geometric shapes and a multitude of ancient spiritual symbols, the sand-painted mandala is used as a tool for re-consecrating the earth and its inhabitants. From all the artistic traditions of Tantric Buddhism, that of painting with colored sand ranks as one of the most unique and exquisite.

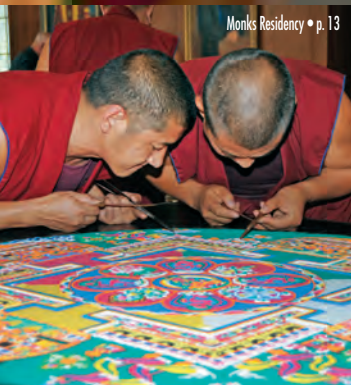
Amid the current turbulent climate of cultural and spiritual conflict that exists between the East and the West, Iranian/American ensemble Niyaz aims to

bridge the gap of understanding and tolerance through their music. Niyaz believes that music can open a universal line of communication to celebrate shared human values and a desire for unity. A ground-breaking new show, *The Fourth Light Project*, evolves from their latest release of the same name into a cutting-edge, immersive and multi-sensory experience.

Representing over a thousand years of Chinese martial arts culture, the legendary Shaolin Warriors perform many styles of Shaolin Kung Fu, as well as give a look at the daily life of the warriors and their Zen philosophy.

Meditation classes designed to promote relaxation, develop compassion, patience and forgiveness are available. Other participatory classes include a series of tribal belly dancing classes and energy-balancing yoga.

Other offerings include the Bridges to the World International Film Series, a statewide initiative in recognition of Maryland's global reach; the Peter and Judy Jackson Chamber Music Series; and the celebrated return of *Tango Lovers*, voted "The 2015 Best Musical Show of the Year" in New York.



Monks Residency • p. 13



Tango Lovers • Apr. 4



Shaolin Warriors • March 29

## Panorama Continues to Evolve!

Salisbury University's cultural events scene is bursting at the seams – and we want to help you find out what is happening. To make it even easier, in addition to our calendar format, you can now find a listing of all events by organizer with a contact phone number. Turn to pages 23-24 for this handy guide.

**Almost Everything Is Free:** SU is proud that most of our cultural offerings are free and open to the public. For events where a large audience is anticipated, attendees may be asked to pick up a free ticket in advance to ensure their seat, look for the **A** symbol. For those events that do require an admission, look for the **\$** symbol and turn to pages 25-26 for ticket information.

**All the Details:** Looking for locations, contact phone numbers, websites or admission costs? You'll find it all in one place. Turn to pages 23-26 and find this information organized by event sponsor.

**Cultural Series Contact:** If you see this symbol at the end of the event description **☪**, that means the event is sponsored by the Cultural Affairs Office and you can get more information on these events by calling **410-543-6271**.

**Events Can Change:** As always, everything is subject to change. Visit the SU website for the press releases that include details about the event and the latest time, date and location information:  
[www.salisbury.edu](http://www.salisbury.edu).



# january

Through January 22

## **Chincoteague Decoys: Tides & Time**

Ward Museum, LaMay Gallery

EXHIBIT: Celebrate Chincoteague decoys in the world of carving and in the heritage of the Eastern Shore. Experience the form and artistry of both antique and contemporary Chincoteague decoys. Learn about this unique island and its carvers. \$

Through February 12

## **Chincoteague Expressions: Artists in their Environment**

Ward Museum,  
Welcome Gallery

Artists living and working in modern-day Chincoteague showcase their work as it reflects the natural environment they call home and explore connections between the people and landscape of Chincoteague. \$

### **3 TUESDAY** Through May 31

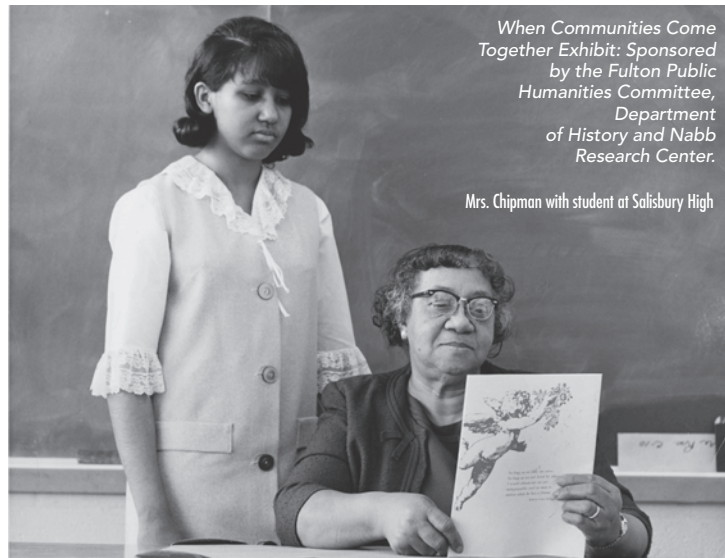
#### **The Stage Is Set: Leland Starnes & the Salisbury State Theatre**

Guerrieri Academic Commons, Thompson Gallery;  
Mon.-Fri. 10 a.m.-4 p.m.

Reception: Thu., Feb. 9, 6-8 p.m.

NABB CENTER EXHIBIT: This exhibit showcases the Salisbury theatre program in the 1970s under the direction of Leland Starnes. Through a variety of material, including photographs, production posters and design sketches, experience the theatrical creations that received rave reviews from the community and critics. Celebrate the hard work and dedication of many staff, faculty and students.

*Sponsored by the SU Libraries.*



*When Communities Come Together Exhibit: Sponsored by the Fulton Public Humanities Committee, Department of History and Nabb Research Center.*

*Mrs. Chipman with student at Salisbury High*

### **3 TUESDAY** Through May 31

#### **When Communities Come Together: African American Education on the Eastern Shore**

Guerrieri Academic Commons, 1st floor lobby

Reception: Thu., March 9, 6-7 p.m. • Film: Thu., March 9, 7-9 p.m.

NABB CENTER EXHIBIT: Examine the educational challenges and triumphs for African Americans on the Eastern Shore post-Civil War. Focusing on the Princess Anne Academy, Rosenwald Schools, the process of desegregation and Salisbury University, experience the trials and tribulations that students faced for decades. This exhibit celebrates African American History Month as well as Women's History Month by highlighting some of the educators who strived to improve the quality of education for African American students in their communities.



### **3 TUESDAY** Through August 31

#### **Delmarva: People, Place & Time**

Guerrieri Academic Commons, Niemann Gallery;  
Mon.-Fri. 10 a.m.-6 p.m., Sat. 10 a.m.-2 p.m.

NABB CENTER EXHIBIT: This self-guided exhibit highlights various aspects of Delmarva history, including Native Americans and early settlers, agriculture and water, family influences, an early 19th century home, and military history. Also features documents and artifacts from the University Archives, now part of the Nabb Research Center.

## 16 MONDAY 1st & 3rd Mondays of the Month

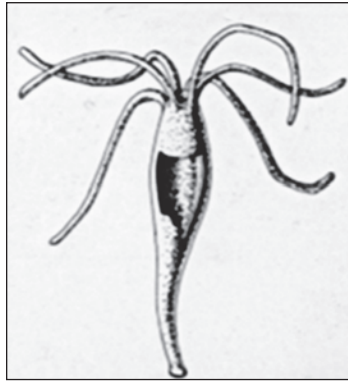
**Carving Club** • MAC Center, 909 Progress Circle

CLASS: Carve, learn, share and socialize – all skill levels welcome. Participation is free, but individuals must join the Ward Museum after their first class to continue.

## 21 SATURDAY

**Drop In Art: Scientific Illustration**  
Ward Museum, 10 a.m.-Noon

CLASS: Join illustrators Clark Carroll and Sherri Ward as they help families create scientific illustrations of native species and local organisms. Projects will be eligible to be submitted to the Ward Museum's annual Student Art Show, "Illustrating Nature."



## 21-22

**Tales of the Eastern Shore**  
Fulton Hall, Black Box Theatre, 2 & 4 p.m.

THEATRE: The Children's Theatre Ensemble, directed by Tom Anderson, shares folk stories and legends from the Eastern Shore. \$



## 26 THURSDAY

**Discover SU: Sustainability Initiatives at SU**  
4:30 p.m.

TOUR: SU is a vibrant learning community with many hidden treasures. Discover SU is a chance to learn more about the University. Each month, tour a specific area. This month's tour is led by Campus Sustainability and Environmental Safety Director Wayne Shelton.

Registration required:  
[www.salisbury.edu/cell](http://www.salisbury.edu/cell); location is sent with confirmation email.

## 27 FRIDAY

Through May 14  
**Scientific Illustration Artistry in the Age of Science**  
Ward Museum, LaMay Gallery  
Reception: Fri., Feb. 17, 5-7 p.m.

EXHIBIT: The field of scientific illustration offers beautiful renderings and visual explanations of scientific subjects from birds and butterflies to animals. Experience the breadth and beauty of illustrated flora and fauna depicted in prints and original work by old masters, as well as in original illustrations from contemporary artists. \$



# Food Systems & Sustainability

## 30 MONDAY

Select Mondays Through May 15

**Food Systems & Sustainability (IDIS 280)**  
Conway Hall 153, 7-8:30 p.m.

CLASS: SU faculty from a variety of disciplines, guest speakers and community members facilitate the exploration of the relevant, complex and at times volatile topics of food and sustainability in the 21st century. Areas of focus include food waste; food and culture; inequalities in the production, distribution and consumption of food; and the impact of local food systems on social and environmental sustainability. Become informed about opportunities in the community to put what you learn into action.

## 30 MONDAY

Through March 18

**Art Department Faculty Exhibition**

Fulton Hall,  
University Gallery

SU ART GALLERIES: View recent artwork created by the SU Art Department faculty.



# february

## 1 WEDNESDAY

### Dans la cour (In The Courtyard)

Fulton Hall 111, 7 p.m.

**TOURNÉES FRENCH FILM FESTIVAL:** When Antoine suddenly decides to end his music career, he is hired as the caretaker of an old Paris apartment building where he develops a friendship with Mathilde, a recently retired woman whose mental balance is deteriorating. French with English subtitles. Presented by Aurélie Van de Wiele, Modern Languages and Intercultural Studies Department.

*Tournées Film Festival is made possible with the support of the Cultural Services of the French Embassy in the U.S., the Centre National du Cinéma et de l'Image Animée, the French American Cultural Fund, Florence Gould Foundation and Highbrow Entertainment. Special thanks Fulton School Dean Maarten Pereboom for his support.*

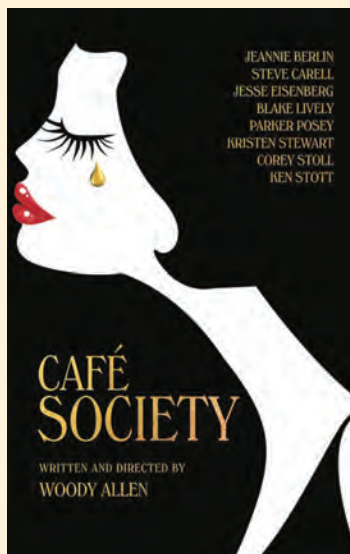


## 5 SUNDAY

### Cafe Society

Fulton Hall 111, 2:30 p.m.

**SALISBURY FILM SOCIETY:** Directed by Woody Allen, a New Yorker moves to Hollywood in the 1930s to work for his uncle, a powerful and well-connected agent. He soon falls for his secretary, unaware that she's secretly having an affair with his uncle. In time, disillusioned, he returns home to run a nightclub for his gangster brother. \$

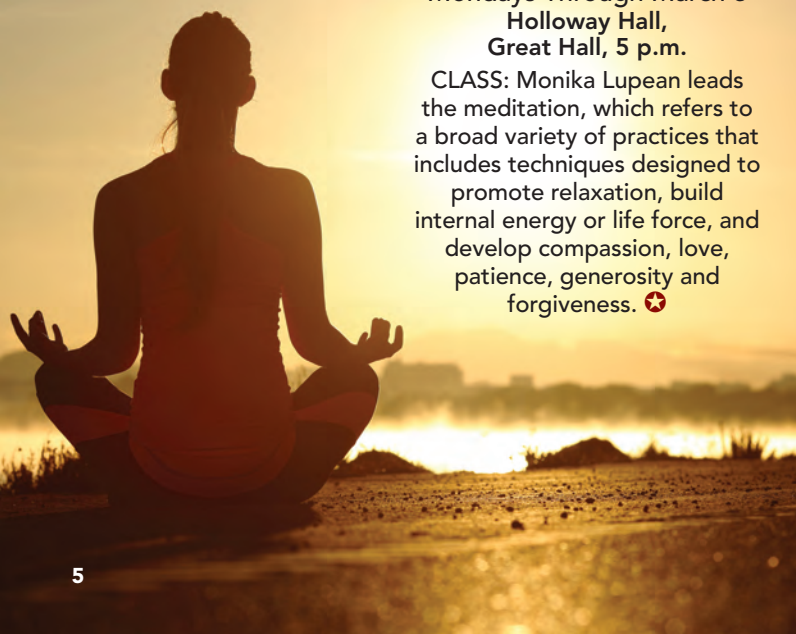


## 6 MONDAY

### Meditation

Mondays Through March 6  
Holloway Hall,  
Great Hall, 5 p.m.

**CLASS:** Monika Lupean leads the meditation, which refers to a broad variety of practices that includes techniques designed to promote relaxation, build internal energy or life force, and develop compassion, love, patience, generosity and forgiveness. ✪



## 6 MONDAY

### The Wind Journeys

Mondays Through March 6  
Holloway Hall, Great Hall, 7 p.m.

**BRIDGES TO THE WORLD INTERNATIONAL FILM SERIES:** (Colombia, Spanish with English subtitles) For most of his life, Ignacio traveled and played his accordion, a legendary instrument said to have belonged to the devil. He married and left the nomadic life behind, but after the death of his wife, he vows to never play the accursed accordion again and embarks on one last journey to return it to its rightful owner. ✪

*World Artists Experiences, Inc. and the International Division of Maryland's Office of the Secretary of State sponsor screenings of five international films chosen by the embassies of the respective countries in recognition of the state's global reach and a reflection of those connections in Maryland.*



## 7 TUESDAY

Every Tuesday

### eBird Tuesdays

Ward Museum, 9-10 a.m.

**CLASS:** Go birding every Tuesday at the Ward Museum starting in the museum's lobby with Ward education staff and SU faculty and students.

## 8 WEDNESDAY

### Study Abroad Experiences

Perdue Hall, Bennett Family Auditorium, 5:30 p.m.

**ENVIRONMENTAL STUDIES COLLOQUIUM SERIES:** Students share their study abroad experiences from the past year. Hear their stories and learn about possibly winter term, summer term and semester-long opportunities for learning and travel.



## 9 THURSDAY

Through March 17

### Nature/Nurture

SU Art Galleries  
Downtown Campus

**SU ART GALLERIES EXHIBIT:** This group exhibition explores the ways in which the natural world has been shaped and transformed by humans and in turn how the biology shapes our lives.



## 9 THURSDAY

### The Stage Is Set: Leland Starnes & the Salisbury State Theatre

Guerrieri Academic Commons, 4th Floor Lobby, 6-8 p.m.

NABB CENTER EXHIBIT

RECEPTION: See January 3 for exhibit details.

Sponsored by Department of Music, Theatre and Dance.



## 9 THURSDAY

### Les Adieux à la Reine (Farewell, My Queen)

Fulton Hall 111, 7 p.m.

TOURNÉES FRENCH FILM

FESTIVAL: When the news of the storming of the Bastille reaches Louis XVI and Marie-Antoinette, most of the aristocrats and their servants flee Versailles, but Sidonie Laborde, the Queen's reader, remains. French with English subtitles. Presented by Claire Kew, Modern Languages and Intercultural Studies. For series details see February 1.



## 10 FRIDAY

### From the Studio to the Classroom

Fulton Hall, University Gallery, 4 p.m.

SU ART GALLERIES

DISCUSSION: Art Department faculty host a panel discussion. Reception to immediately follow.

## 10 FRIDAY

### Soul Food Dinner Featuring Bernard Sweetney

Commons, Bistro, 4:30-7:30 p.m.

INTERNATIONAL DINNER

SERIES: Hailing from Delaware, Sweetney is a multi-instrumental jazz artist who has toured with Shirley Horn, Reuben Brown and Roberta Flack. \$ ☆

## 10-11\*

### Sound of Music Sing-A-Long

Holloway Hall Auditorium, 7 p.m. & \*2 p.m.

FILM & CONCERT: Look for details and costs. \$



## 11 SATURDAY

### Second Chance Jewelry Auction

Ward Museum, 6-8 p.m.

SPECIAL EVENT: Enjoy delicious cocktails and bid on gently used jewelry donated from the community. Entry to the auction is free and all proceeds benefit the Ward Foundation. Those interested in making a jewelry donation are encouraged to contact the Ward Museum.

## 13 MONDAY

### Meditation

Holloway Hall, Great Hall, 5 p.m.

CLASS: See February 6 for details. ☆



## 13 MONDAY

### Finding the Ancestors: Tracing African American Genealogy

Guerrieri Academic Commons, Nabb Research Center Classroom, 7 p.m.

NABB LECTURE: Aston Gonzalez, SU assistant professor of history, discusses how African Americans can learn about their genealogy through online sources, archival research and other means. He explores some of the common obstacles African Americans encounter when attempting to reconstruct their histories. Space is limited; call 410-543-6312 to register.

## 13 MONDAY

### The Beauty Inside

Holloway Hall, Great Hall, 7 p.m.

BRIDGES TO THE WORLD INTERNATIONAL FILM SERIES:

(Korea, Korean with English subtitles) The surprise sleeper hit of Cannes is a body-hopping romantic comedy that asks the question: Where does love begin? Every morning, Woo-jin wakes up in a different body. His age, gender and nationality may change, but the one constant in his life is E-soo – the woman he loves. She knows his secret and loves him anyway.

See February 6 for series details. ☆



# february



## 15 WEDNESDAY

### Russian Revolutionaries • Allegheny Ensemble Holloway Hall, Great Hall, 7 p.m.

CONCERT: Ernest Barretta, piano; Sachiko Murasugi, violin; Jeffrey Schoyen, cello; and guest Angela Marchese, soprano, perform music of Russian composers who challenged musical traditions and forged a unique, nationalistic style. The concert includes work for voice and piano by Rachmaninoff and the Shostakovich Piano Trio in e minor, op. 67.

## 15 WEDNESDAY

### La Cour de Babel (School of Babel)

Fulton Hall 111, 7 p.m.

TOURNÉES FRENCH FILM FESTIVAL: How to integrate into French society when you are a young immigrant newly arrived in Paris? The film is an inside look into the days of the special needs class at La Grange welcoming foreign students from all over the world. French with English subtitles. Presented by Derya Kulavuz-Onal, English Department. For series details see February 1.



## ADVENTURES IN IDEAS: HUMANITIES SEMINAR

## 18 SATURDAY

### Mysteries of Memory With Timothy Stock

Conway Hall 179, 10 a.m.-3 p.m.

Memory is so integral to our sense of self that we often fear losing it more than we do dying. Yet our experience of our own memories, at once unreliable and indispensable, is shrouded in mystery. Stock traces the history of the concept of memory as it adapts to philosophical revolution, scientific discovery and technological change, and he

explores how this history illustrates what we can know about the "treasure trove of the mind." \$



## 17 FRIDAY

Through April 2

### Illustrating Nature Student Art Show

Ward Museum,  
Welcome Gallery  
Reception: Fri, Feb. 17,  
5-7 p.m.

EXHIBIT: The annual non-competitive student art show features works from regional students in kindergarten through 12th grade. Held in conjunction with the exhibit "Scientific Illustration: Artistry in the Age of Science." Works will illustrate the natural world around from a scientific perspective.

Interested students can learn submission details at <http://bit.do/wardstudentart>. Submission deadline is Fri., Feb. 10.

## 17 FRIDAY

**Scientific Illustration  
Artistry in the Age of Science**  
Ward Museum, LaMay Gallery,  
5-7 p.m.

EXHIBIT RECEPTION: See January 27 for exhibit details.

## 18 SATURDAY

**Drop In Art Third Saturdays**  
Ward Museum, 10 a.m.-Noon

CLASS: Join a different artist every third Saturday for this family art program that is fun for all ages. Families can drop-in to make and take a fun art creation. All children should be accompanied by an adult.

## 20 MONDAY

**Meditation**  
Holloway Hall, Great Hall,  
5 p.m.

CLASS: See February 6 for details. ★



## 20 MONDAY

### Son of Saul

Holloway Hall, Great Hall, 7 p.m.  
BRIDGES TO THE WORLD INTERNATIONAL FILM SERIES: (Hungary, Hungarian with English subtitles) October 1944, Auschwitz-Birkenau. Hungarian Saul is a member of the group of Jewish prisoners forced to assist the Nazis. When he discovers the body of a boy he takes for his son, he decides to carry out an impossible task: save the child's body, find a rabbi to recite the mourner's Kaddish and offer the boy a proper burial. ★



## 21 TUESDAY

### Let's Talk About Learning: Children's Memories of How They Learn

Rhyannon Bemis, Psychology

Conway Hall 152, 3:30 p.m.  
FULTON FACULTY COLLOQUIA: Featuring the research and creative work of faculty members from across the Fulton School, the colloquia celebrate both the work of individual faculty and the disciplinary diversity of the school.

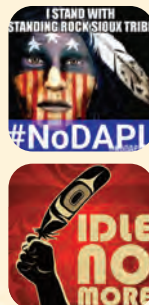
## 22 WEDNESDAY

### Pipelines & the Public Square

Conway Hall 153, 7 p.m.

#### ENVIRONMENTAL STUDIES COLLOQUIUM SERIES:

Janet Fiskio, Oberlin College, discusses recent movements like #nodapl and Idle No More open spaces for participatory democracy and utopian desire to emerge. Taking these and similar "choreographies of protest" to heart, consider the value of asking questions, causing trouble and dwelling in the presence of unbearable grief as one confronts and responds to events like global climate change and species extinction.



## 23 THURSDAY

### Discover SU: Preparing Thousands of Meals a Day

4:30 p.m.

TOUR: This month's tour is led by University Dining Service Director Owen Rosten.

Registration required: [www.salisbury.edu/cell](http://www.salisbury.edu/cell); location is sent with confirmation email. For series details see January 26.

## 23 THURSDAY

### Pierrot le fou

Fulton Hall 111, 7 p.m.

TOURNÉES FRENCH FILM FESTIVAL: Pierrot escapes his boring society and travels from Paris to the Mediterranean Sea with Marianne, a girl chased by hit-men from Algeria. They lead an unorthodox life, always on the run. French with English subtitles. Presented by Arnaud Perret, Modern Languages and Intercultural Studies Department. For series details see February 1.



## 23 THURSDAY

### Singer's Showcase

Holloway Hall, Great Hall, 7:30 pm

CONCERT

## 27 MONDAY

### Meditation

Holloway Hall, Great Hall, 5 p.m.

CLASS: See February 6 for details. ★

## 27 MONDAY

Through March 11

### Intermedia a go-go!

Conway Hall, Electronic Gallery  
SU ART GALLERIES EXHIBIT: SU students collaborate across media to create an interdisciplinary digital exhibition.



## 27 MONDAY

### Factory Girl

Holloway Hall, Great Hall, 7 p.m.

BRIDGES TO THE WORLD INTERNATIONAL FILM SERIES: (Egypt, Arabic with English subtitles) This

romantic drama tells of the events of the factory girl Hiam, a 21-year-old, poor girl, who works in a garment factory. She falls in love and is faced by the rigidity of the community toward her feelings. See February 6 for series details. ★

## 28 TUESDAY

### Mardi Gras Dinner

Featuring Such Fools Band

Commons, Bistro, 4:30-7:30 p.m.

INTERNATIONAL DINNER SERIES: Such Fools are bound together on a quest for a meaningful musical experience amid the vast peninsula known simply as Delmarva. They are as diverse as their backgrounds.

★ ★



## AFRICAN AMERICAN HISTORY MONTH THE CRISIS IN BLACK EDUCATION

Celebration Runs January through April

Co-sponsors: Office of Multicultural Student Services, Seidel School of Education and Professional Studies, Student Government Association, SU Faculty Learning Community on Teaching Diversity, and Fulton Public Humanities Program.

### 9 THURSDAY

#### Cross-Cultural Education and African American Museums

Guerrieri Center, Wicomico Room , 7 p.m.

KEYNOTE LECTURE: Deborah Salahu-Din discusses the historical significance of the opening of the Smithsonian Museum of African American History and Culture. In particular, she examines the important role the Smithsonian and other African American museums play in building cross-cultural bridges that can help resolve conflict and avert cultural clashes. Salahu-Din is a museum specialist with the Smithsonian's National Museum of African American History and Culture, developing academic content and identifying and collecting artifacts, photographs and graphics.



### 10 FRIDAY

**Soul Food Dinner**  
Featuring **Bernard Sweetney**  
Commons, Bistro,  
4:30-7:30 p.m.

INTERNATIONAL DINNER  
SERIES: See calendar listing for  
details. \$ 🇺🇸

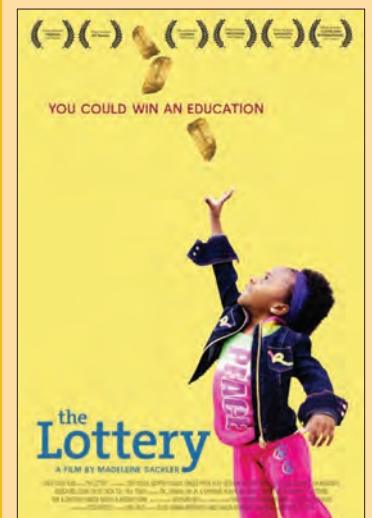
### 13 MONDAY

**Finding the Ancestors: Tracing  
African American Genealogy**  
Guerrieri Academic Commons,  
Nabb Research Center  
Classroom, 7 p.m.

NABB LECTURE: See calendar  
listing for details.

### 22 WEDNESDAY

**The Lottery**  
Fulton Hall 111, 7 p.m.  
FILM & DISCUSSION: The  
documentary chronicles four  
children's efforts to win  
admission to one of the best  
schools in New York by entering  
a lottery. Discussion follows  
the viewing.



## 23 THURSDAY

### Addressing the Crisis in Black Education Guerrieri Center, Wicomico Room, 7 p.m.

PANEL DISCUSSION: Anjali Pandey, Noliwe Rooks, Brandi Terrill and Christina Collins consider national obstacles to African American education, broadly defined, and possible solutions to them. Pandey, SU English Department, is an internationally recognized scholar of applied linguistics. Rooks, of Cornell University, is the author of three books and the forthcoming tentatively titled book *Cutting School: Apartheid Education and the Big Business of Unmaking Public Education*. Terrill, SU Teacher Education Department, is the co-principal investigator for the ENCHANT (Energizing New College Hopefuls through the Arts, Numerical Sciences and Technology) Project. Collins, lead researcher and policy analyst at the United Federation of Teachers, is author of *"Ethnically Qualified": Race, Merit and the Selection of Urban Teachers*.



Noliwe Rooks



Christina Collins



Anjali Pandey



Brandi Terrill

## 28 TUESDAY

### Student Perspectives on Black Education

Guerrieri Center, Wicomico Room, 6:30 p.m.

STUDENT PANEL DISCUSSION: SU student leaders Markiera Saunders, Donovan Mack, Amani Bouyer, Brian Anderson and Cearrah Sherman discuss their experiences with navigating K-12 education in private and public institutions, the challenges many African Americans face when pursuing a college degree and other educational opportunities, and SU's successful efforts to address diversity and inclusion with the aim of brainstorming ways SU students might help improve access to education for all members of their communities.



## RELATED EVENTS

### 3 JANUARY TUESDAY Through May 31

**When Communities Come Together:  
African American Education on the Eastern Shore**  
Guerrieri Academic Commons, 1st Floor Lobby  
Reception: Thu., March 9, 6-7 p.m.  
Film: Thu., March 9, 7-9 p.m.

EXHIBIT: See calendar listing for details.

### 4 MARCH SATURDAY

#### Multicultural Leadership Summit

Guerrieri Center, Wicomico Room, 8 a.m.-3 p.m.

SPECIAL EVENT: SU's Multicultural Student Services hosts this annual opportunity for local high school students to learn about the college application process and for college students to refine their leadership skills. \$

Admission is \$25 for non-SU students.

### 9 MARCH THURSDAY

#### Rosenwald: The Remarkable Story of a Jewish Partnership with African American Communities

Guerrieri Academic  
Commons,  
Assembly Hall, 7-9 p.m.

FILM: See January 3 for  
related events at the Nabb  
Research Center.

### 14 APRIL FRIDAY

#### African Heritage Dancers & Drummers

Holloway Hall Auditorium, 6:30 p.m.

PERFORMANCE: Experience the interpretation of rhythmic patterns and movement, with a brief overview of the historical and cultural context of specific African music forms relative to the diaspora.



# march

## 1 WEDNESDAY

### **Couleur de Peau: Miel (Approved for Adoption)**

Fulton Hall 111, 7 p.m.

**TOURNÉES FRENCH FILM FESTIVAL:** In this animated film, comic-book artist Jung returns to Seoul for the first time since he was abandoned at the age of 5 and adopted by a Belgian family. French and Korean with English subtitles. Presented by Chrys Egan, Communication Arts Department. For series details see February 1.

## 1 WEDNESDAY

### **Melinda Moustakis Reading**

Commons, Worcester Room, 8 p.m.

**WRITERS ON THE SHORE:** Moustakis is the author of *Bear Down*, *Bear North: Alaska Stories*, which won the Flannery O'Connor Award and was a 5 Under 35 selection by the National Book Foundation. She holds an M.A. from University of California, Davis and a Ph.D. from Western Michigan University. She is the recipient of a Hodder Fellowship from The Lewis Center of the Arts at Princeton University, an NEA Literature Fellowship in Fiction, a Kenyon Review Fellowship at Kenyon College, and is currently the Jenny McKean Moore Writer-in-Residence at George Washington University.



Melinda Moustakis



## 2 THURSDAY

### **American Experience: Dolley Madison Women's History Month Event**

Fulton Hall 111, 5 p.m.

**FILM & ROUNDTABLE:** Madison was a pivotal player in the early days of the American Republic. She survived two separate wars and maintained friendships with several prominent Americans, including the first 12 presidents. She was known as Queen Dolley and established the role of the president's wife, becoming arguably the first First Lady. The documentary follows from humble Quaker upbringing to her funeral, the largest for a woman that the nation had ever seen. Dean Kotlowski, a historian of presidential politics, and Kara French, a U.S. women's historian, discuss the progression of women as political actors from the age of Dolley Madison to the present. A reception follows.

*Sponsored by the Fulton Public Humanities Program.*

## 4-5\*

### **Lightroom: A Complete Digital Workflow for Photo Editing**

Ward Museum, 9 a.m.-5 p.m. & \*9 a.m.-1 p.m.

**CLASS:** The two-day class with Brian Zwit teaches how to use Lightroom to organize and get the best from images. Start with the basics, e.g., navigating Lightroom, selecting images and basic mouse gestures, and then cover the Library, Develop and Print modules in detail. \$



## 5 SUNDAY

### **Phoenix**

Fulton Hall 111, 2:30 p.m.

**SALISBURY FILM SOCIETY:** Nelly is a German woman who survived the horrors of a WWII concentration camp but is left disfigured. She sets out amidst the aftermath of postwar Berlin to locate her husband and finds him working at a cabaret club called Phoenix. Urged to leave him, Nelly stays, and as their relationship unfolds, she learns that he may have betrayed her to the Nazis. \$

## 6 MONDAY

### **Meditation**

Holloway Hall, Great Hall, 5 p.m.

**CLASS:** See February 6 for details. ☆

## 6 MONDAY

### **Film: Mexico**

Holloway Hall, Great Hall, 7 p.m.

**BRIDGES TO THE WORLD INTERNATIONAL FILM SERIES:** Look for details on a film from Mexico to be announced in the spring. See February 6 for series details. ☆

## 7 TUESDAY

### **Limits of Pax Britannica: Railway Crime & Criminals in Colonial India** **Aparajita Mukhopadhyay, History**

Conway Hall 152, 3:30 p.m.

**FULTON FACULTY COLLOQUIA:** See February 21 for series details.

## 7 TUESDAY

### **SU & UMES Third Annual Trombone Day**

Holloway Hall, Great Hall, 7:30 p.m.

**CONCERT:** The performance features Weston Sprott, trombonist with the Metropolitan Opera Orchestra.

## 9 THURSDAY

### **seed journeys & hidden legacies** **With Onajide Shabaka**

SU Art Galleries Downtown Campus, 5:30 p.m.

**ARTIST TALK:** A Reception immediately follows the talk.



# 11 SATURDAY

## Children's Concert: Really Inventive Stuff

Holloway Hall Auditorium, 3 p.m.

SALISBURY SYMPHONY ORCHESTRA: Really Inventive Stuff presents a fully staged, vaudeville-inspired, signature performance of Sergei Prokofiev's *Peter and the Wolf*. This timeless tale of boy versus wolf is guaranteed to engage and inspire imaginations of all ages as well as when The Professor, a whimsical Austrian sound scientist, appears and needs your help to complete the melody of Mozart's *The Toy Symphony*. Be prepared to play along as the audience becomes the missing instrument. \$



# 9 THURSDAY

## When Communities Come Together: African American Education on the Eastern Shore

Guerrieri Academic Commons, 1st Floor Lobby; 6-7 p.m.

NABB CENTER EXHIBIT

RECEPTION: See exhibit details on January 3.

# 9 THURSDAY

## Rosenwald: The Remarkable Story of a Jewish Partnership with African American Communities

Guerrieri Academic Commons, Assembly Hall, 7-9 p.m.

FILM: See January 3 for related events at the Nabb Research Center.

# 9 THURSDAY

## Saint Laurent

Fulton Hall 111, 7 p.m.

TOURNÉES FRENCH FILM FESTIVAL: Explore Yves Saint Laurent's life from 1967 to 1976, during which time the famed fashion designer was at the peak of his career. French with English subtitles. Presented by Victoria Pass, Department of Art. For series details see February 1.



# 10 FRIDAY

## Valuing Bird Biodiversity Using Citizen Science

Ward Museum, 3-6 p.m.

LECTURE & WORKSHOP:

President of the American Bird Association Jeff Gordon and SU Assistant Professor of Economics and Finance Sonja Kolstoe share research about the role of bird biodiversity in the economic impact of birding. Following their remarks, attendees can learn and get help with using the online citizen science tool, eBird, including how to upload life lists in Excel format.



Sonja Kolstoe



Jeff Gordon

# 15 WEDNESDAY

## Green Infrastructure & Sustainability: The Weaver Bird Arboretum & Apiary in Africa

Conway Hall 153, 7 p.m.

ENVIRONMENTAL STUDIES COLLOQUIUM SERIES:

Though we often think of green infrastructure in the context of urban areas, green infrastructure can be important in rural landscapes as well. Fulbert Namwamba from SU's Geography and Environmental Studies departments shares examples from recent restoration efforts on a farm in Kenya.



# march

## TIBETAN MONKS RESIDENCY

Healing the Earth: A Sacred Art by the Tibetan Lamas of Drepung Loseling Monastery

The Mystical Arts of Tibet Mandala Sand Painting

March 13-17 • Holloway Hall, Great Hall

For the sixth time, 11 Tibetan monks from the famed Drepung Loseling Institute, with blessings from His Holiness the Dalai Lama, are in residence at SU. ✪

Sponsored by the Office of Cultural Affairs and University Dining Services.

### 13 MONDAY

#### Opening Ceremony Noon

The monks begin by consecrating the site of the mandala sand painting with approximately 30 minutes of chants, music and mantra recitation.

#### Drawing of the Lines & Mandala Construction

Following Ceremony-5 p.m.

Immediately following the opening ceremony, the monks start drawing the line design for the mandala. This is very exacting work that takes about three hours to complete.

### 14-16

#### Mandala Construction

10 a.m.-5 p.m.

The monks lay on the colored sands, which is effected by pouring the sand from traditional metal funnels called chak-purs. Each monk holds a chak-pur in one hand, while running a metal rod on its grated surface; the vibration causes the sands to flow like liquid. The finished mandala is approximately 5 feet by 5 feet.

### 14 TUESDAY

#### A Taste of Tibet Dinner

Commons, Bistro, 4:30-7:30 p.m.

INTERNATIONAL DINNER SERIES: The dinner is held in conjunction with Tibetan Monk Residency. \$

### 17 FRIDAY

#### Mandala Construction

10 a.m.-Noon

#### Mandala Consecration Noon

#### Closing Ceremony 2 p.m.

The monks dismantle the mandala, sweeping up the colored sands to symbolize the impermanence of all that exists. Half of the sand is distributed to the audience as blessings for personal health and healing.

#### Dispersal Ceremony

Salisbury City Park, Immediately following the Closing Ceremony

The remaining sand is carried in a procession by the monks, accompanied by guests, to a flowing body of water, where it is ceremonially poured to disperse the healing energies.

### 16 THURSDAY

#### St. Patrick's Day Dinner Featuring the Folk Heroes

Commons, Bistro, 4:30-7:30 p.m.

INTERNATIONAL DINNER SERIES: SU celebrates Irish heritage and the many positive contributions that Irish people have made to American life. The evening features Irish favorites: soda bread and corned beef and cabbage. Enjoy the Irish tunes of the Folk Heroes Robin Cockey, Bob Hayman, Mick Haensler and Charlie Stegman while you dine. \$ ✪

### 16 THURSDAY

#### Discover SU: SU's Ward Museum 4:30 p.m.

TOUR: This month's tour is led by Ward Museum Executive Director Lora Bottinelli.

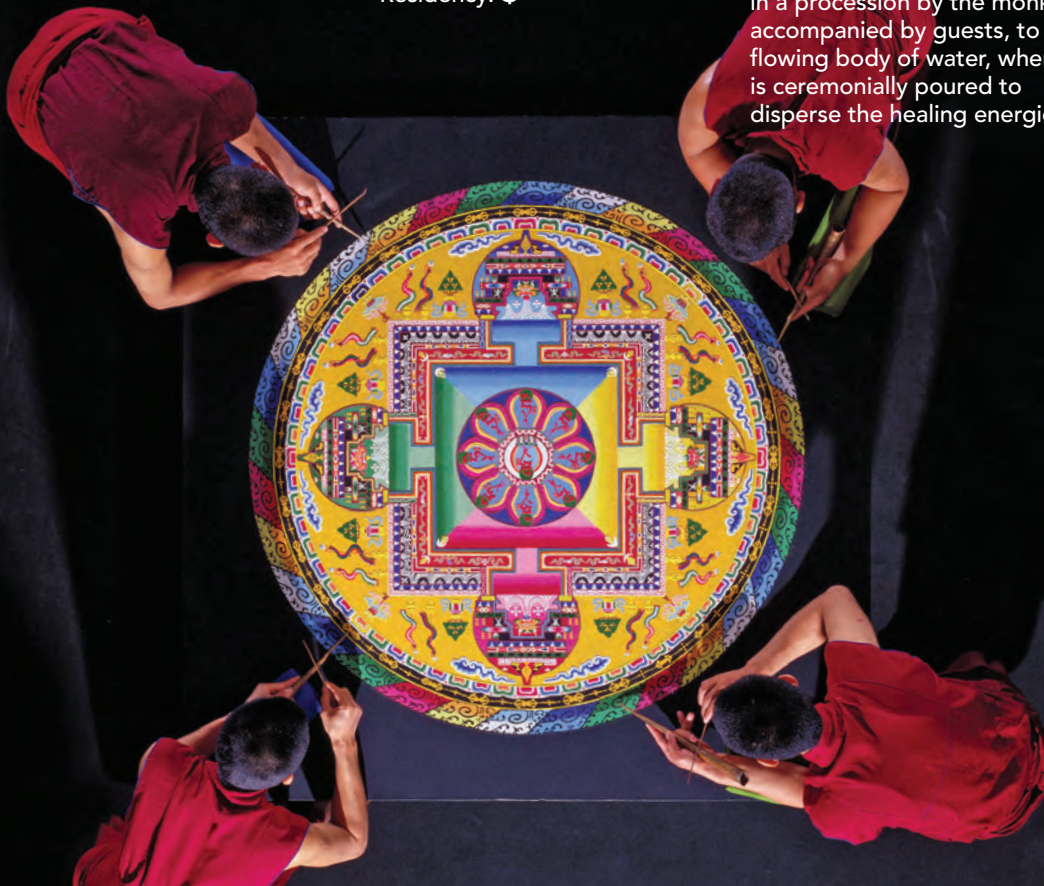
Registration required: [www.salisbury.edu/cell](http://www.salisbury.edu/cell); location is sent with confirmation email. For series details see January 26.

### 16 THURSDAY

#### Women's History Month Keynote Lecture

Guerrieri Center,  
Wicomico Room, 7 p.m.

LECTURE: Premilla Nadasen, Barnard College, discusses the efforts of women, who are doubly marginalized due to their class or employment, to organize to win greater sociopolitical recognition and a voice in the workplace. Her book *Welfare Warriors: The Welfare Rights Movement in the United States* analyzes how grass-roots welfare activists forged a distinctive brand of feminism out of the political and cultural circumstances of their lives and in the process remapped the contours of radical politics and influenced the contested terrain of welfare policy, and *Domestic Workers Unite!* discusses the history of domestic worker organizing in the U.S.



## 18 SATURDAY

### Drop In Art Third Saturdays

Ward Museum, 10 a.m.-Noon

CLASS: Join a different artist every third Saturday for this family art program that is fun for all ages. Families can drop-in to make and take a fun art creation. All children should be accompanied by an adult.

## 24 FRIDAY

### Wine Pairing at the Ward

Ward Museum, 6-8 p.m.

CLASS: Learn the fine art of pairing with the first lesson in the 2017 series. Learn from experts what to pair with tasty treats and dinners. \$

## 25 SATURDAY

### You Can Go Home Again Why Personal & Place Story Matters in Conversation

Ward Museum,  
8:30 a.m.-12:30 p.m.

WORKSHOP: A writing workshop with Drew Lanham. Look for details closer to the event. \$

## 29 WEDNESDAY

### Shaolin Warriors

Holloway Hall Auditorium, 7 p.m.

Free tickets (limit 2) available at the Guerrieri Center Information Desk beginning Mon., Feb. 27.

PERFORMANCE: Representing over a thousand years of Chinese martial arts culture, this fully choreographed stage production illuminates the remarkable skill, stunning artistry and death-defying martial-arts prowess of more than 20 Kung Fu masters. Beginning at a very young age, they are trained in mental and physical disciplines, perfecting the art of hand-to-hand and weapons combat, which allows them to perform unbelievable feats of athleticism that only seem possible in the movies. The production features many forms of Shaolin Kung Fu as well as a look at the daily life of the warriors and their Zen philosophy. ★ A



## 30 THURSDAY

Through June 10

### IN TRAINING

Conway Hall,

Electronic Gallery

Artist Talk & Reception:

Thu., March 30,

Conway Hall 153, 5:30 p.m.

SU ART GALLERIES EXHIBIT:

This solo exhibition of neon, sound, 3D printed objects and performance works is by media artist Liss LaFleur. It reflects over three years of research focused on the unsung feminist hero Claude Cahun.

## 30 THURSDAY

### Election Autopsy: A Historian Looks at the 2016 Election

Perdue Hall, Bennett Family  
Auditorium, 7 p.m.

PACE LECTURE: SU's Dean Kotlowski provides an historian's perspective on the events and results of the 2016 presidential election.

## 30 THURSDAY

### New Music Salisbury

Holloway Hall, Great Hall,  
7:30 p.m.

CONCERT

## 27 MONDAY

### Hugo Kauder Trio

Holloway Hall,  
Great Hall, 7 p.m.

PETER & JUDY

JACKSON

CHAMBER MUSIC

SERIES: Founder  
and oboist Ivan

Danko's idea to establish the ensemble with a unique combination of instruments originated while performing with violist Róbert Lakatos and pianist Ladislav Fanzowitz. The combination of oboe, viola and piano creates an interesting sound alternative to the typical piano trio and opens up an exceptional and innovative repertoire. In their search for suitable music, the Trio discovered Hugo Kauder. His birthplace in today's Czech Republic and the fact that these compositions contain elements of Central European folk music inspired the Trio to adopt the name the Hugo Kauder Trio. In an attempt to unveil lesser known works, the trio explores works by other persecuted composers and unknown authors of the 19th and 20th centuries. ★

Co-sponsored by World Artists Experiences, Inc.



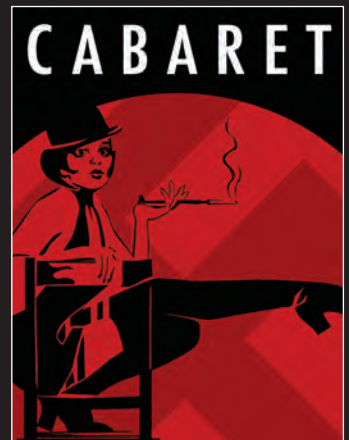
## 30-Apr. 3\* & Apr. 6-9\*

### Cabaret

Fulton Hall, Black Box  
Theatre, 8 p.m. & \*2 p.m.

SU THEATRE: Directed by T. Paul Pfeiffer. Music Direction by Dr. William Folger. Berlin: 1930. The denizens of the Kit Kat Klub dance away as the storm clouds gather. Led by the frivolous and quirky charms of Sally Bowles, the young English headliner, and under the trance of the Emcee, the dancing girls and the tiny orchestra, mounting tensions are kept outside. "In here, Life is Beautiful." But tranquility is fragile and the charm is shattered when forces at work in pre-Nazi

Germany eventually bring friendships and even love to its final solution. (Mature themes.) \$



# april

## ADVENTURES IN IDEAS: HUMANITIES SEMINAR



### 1 SATURDAY

**Cabaret in Context: Culture & Politics Between the Wars With Victoria Pass, Maarten Pereboom & Leanne Wood**  
Guerrieri Academic Commons 430K, 10 a.m.-3 p.m.

Explore the tumultuous politics and vibrant culture of Germany and Europe following the "Great War." Examine the musical and visual culture of Berlin's cabaret scene, and more broadly the tensions between old and new in Weimar, Germany. Presenters share the history of Kander and Ebb's musical *Cabaret*, both as a product of the 1960s and as a perennially provocative Broadway revival. \$

### 2 SUNDAY

**Lo and Behold, Reveries of the Connected World**  
Fulton Hall 111, 2:30 p.m.

SALISBURY FILM SOCIETY: Director Werner Herzog's film ponders the existential impact of the Internet, robotics, AI, the Internet of Things and more on human life. He chronicles the virtual world from its origins to its outermost reaches, exploring the digital landscape with the same curiosity and imagination he previously trained on earthly destinations as disparate as the Amazon, the Sahara, the South Pole and the Australian outback. \$

### 3 MONDAY

Mondays Through April 17  
**Belly Dancing**  
Holloway Hall, Great Hall, 5 p.m.

CLASS: Learn the basics of tribal belly dance from Rose Roma MacGregor, a Gypsy Caravan tribal belly dance-certified teacher. No experience necessary. Comfortable clothing is recommended. ★

### 3 MONDAY

Through April 22  
**56th Biannual Senior Exhibition of Fine Arts**  
Fulton Hall, University Gallery  
Awards Reception:  
Fri., Apr. 14, 5-7 p.m.  
SU ART GALLERIES EXHIBIT

### 4 TUESDAY

**Tango Lovers**  
Holloway Hall Auditorium, 7 p.m.

Cost: \$15; \$10 w/ SU student ID (limit 1 per student)  
Tickets available at the Guerrieri Center Information Desk beginning Fri., March 3.

DANCE: Back by popular demand! The group achieves harmony between tango salon and tango show styles and proposes a different perspective of the genre, showing its evolution over time. Its dynamism gets the audience to travel through different stories, making them feel identified by at least one of them. The first part of the show is inspired by the Golden Age of tango, mixing wardrobe, dance and songs to give the audience a taste of the rhythm of the city of Buenos Aires. The second part shows a modern view inspired by the vortex of big cities and the relationships among people while displaying avant-garde aesthetics. ★ \$

### 4 TUESDAY

**Black Activism Across Borders: The Global Dimensions of Solidarity**  
Conway Hall 153, 7:30 p.m.

GLOBAL CONNECTIONS, GLOBAL ENGAGEMENT LECTURE FORUM: Current campaigns to secure justice and equality for people of African descent parallel historical movements with similar aims. Assistant Professor of History Aston Gonzalez explains this history and new strategies to effect change.

Sponsored by the History Department.

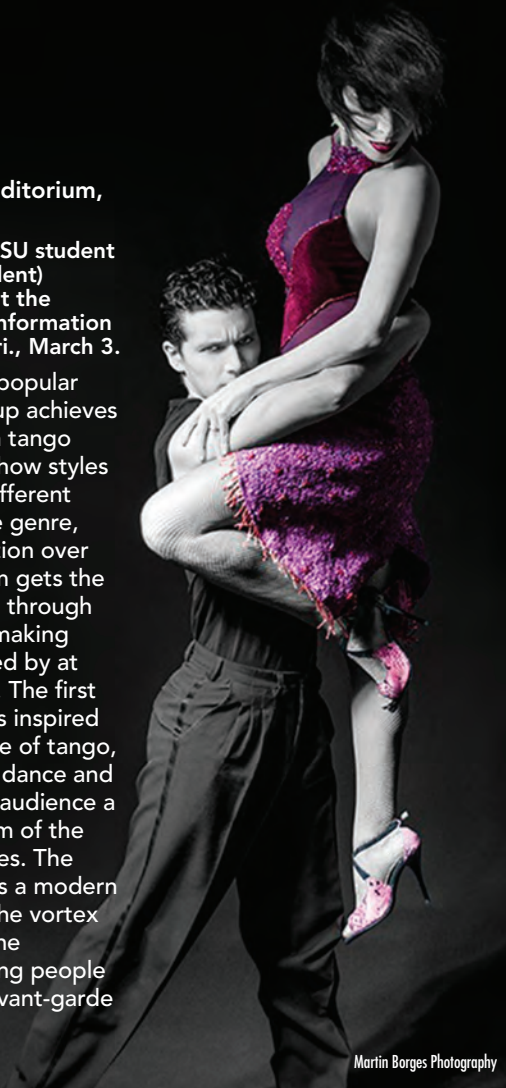
### 5 WEDNESDAY

**Kathryn Nuernberger Reading**  
Commons, Worcester Room, 8 p.m.

WRITERS ON THE SHORE: Nuernberger is the author of two poetry collections, *The End of Pink*, which won the James Laughlin Prize from the Academy of American Poets, and *Rag & Bone*, which won the Antivenom Prize from Elixir Press. She has received research fellowships from the American Antiquarian Society and The Bakken Museum of Electricity in Life to support the development of poems based on the history of science. She is an associate professor of creative writing at the University of Central Missouri, where she also serves as the director of Pleiades Press.



Kathryn Nuernberger



Martin Borges Photography



**6 THURSDAY**  
**Artist Talk with Amber Cowan**  
 SU Art Galleries Downtown Campus, 5:30 p.m.  
 SU ART GALLERIES: Cowan re-works vintage pressed glassware produced by some of the best known, but now-defunct, American glass factories and reincarnates them into opulent abstractions. Simultaneously subversive and patriotic, her objects contain the story of the rise, glory and demise of U.S. glassware manufacturing and its influence on society.

**7 FRIDAY**  
 Through July 30  
**Talents Unveiled**  
**A Volunteer Art Showcase**  
 Ward Museum, Welcome Gallery  
 EXHIBIT: Many of the volunteers at the Ward Museum are accomplished artists themselves. The exhibit features a collection of works made using a variety of media and techniques by our dedicated volunteers. \$

**11 TUESDAY**

**The Fourth Light Project**  
**Featuring Niyaz**  
 Holloway Hall Auditorium, 7 p.m.  
 Free tickets available at the Guerrieri Center Information Desk beginning Fri., March 10. Limit of 2 tickets per person.  
 CONCERT: Niyaz has created a 21st-century, global, trance tradition, seamlessly blending poetry and folk songs from their native Iran and surrounding countries with rich, acoustic instrumentation and state-of-the-art, modern electronics. By masterfully blending acoustic and electronic music, Niyaz appeals to fans of fantasy, global electronica, Middle Eastern music, sacred music and alternative world music. This ground-breaking new show evolves from their latest release of the same name into a cutting-edge, immersive and multi-sensory experience. ★ A



**8 SATURDAY**  
**37th Annual SU Philosophy Symposium • Just Kids? What Philosophy Can Do for Children & What Children Can Do for Philosophy**  
 Conway Hall 153, 9 a.m.-3:30 p.m.  
 Presentations in the morning, panel & open discussion in the afternoon

This symposium addresses questions about education, philosophy, children and their relationships, such as: Can children actually do philosophy? Should they? What can adults learn from children about philosophy? Does philosophy in schools benefit children, teachers and the wider community, and if so, how? The symposium features teachers and students who have been participating in the local Philosophy in Schools program. Speakers include Michael Burroughs, Rock Ethics Institute, Penn State University, and Philosophy Learning and Teaching Organization; Claire Katz, Texas A&M University; and Megan Laverty, Teachers College, Columbia University  
 Sponsored by the SU Philosophical Society, the SU Philosophy Department and SU alumni.

**10 MONDAY**  
**Belly Dancing**  
 Holloway Hall, Great Hall, 5 p.m.  
 CLASS: See April 3 for details. ★

**12 WEDNESDAY**  
**Landscape Simplification & Pollinators • Can We Design Agricultural Systems that Maintain Ecosystem Services?**  
 Perdue Hall, Bennett Family Auditorium, 5:30 p.m.  
 ENVIRONMENTAL STUDIES COLLOQUIUM SERIES: Claudio Gratton, Entomology Department, University of Wisconsin, talks about how increasing demands for food, and now fuel, have led to the "simplification" of the agricultural landscape, that is the removal of natural and semi-natural areas and the increase in monocultures of annual crops.

**6-8 Salisbury Percussion Festival 2017 (SPF 17)**  
 Holloway Hall Auditorium  
 FESTIVAL: A world of percussion with just about everything under the sun – let your senses absorb some "skin" treatment.

- **THURSDAY • 7:30 p.m.**  
**An Evening of Percussion**  
 CONCERT: Featuring the SU Percussion and World Drum ensembles.
- **FRIDAY • 7:30 p.m.**  
**SPF 17 Featured Artist**  
 CONCERT
- **SATURDAY • 2 p.m.**  
**Percussion Studio Recital**  
 CONCERT: Featuring SU students from the percussion studios of Ted Nichols and Eric Shuster.

# april

## 13 THURSDAY

Seeing Sound Series: Volume 2  
Kristen Anchor Presents

*Everyman as Anyman, or Putting On, On, On, On, On*  
Conway Hall 317, 5:30 p.m.

SU ART GALLERIES PERFORMANCE: Anchor interprets Esta Nesbitt's 1969 multimedia performance work demonstrating "the media bombardment surrounding 'everyman' today," as a live multi-channel video performance. Digital interpretation commissioned by the Smithsonian's Archives of American Art in 2015.



## 13 THURSDAY

### Passover Dinner

Commons, Bistro, 4:30-7:30 p.m.

INTERNATIONAL DINNER

SERIES: Please Note: SU does not have a Kosher kitchen. \$ \*

## 14 FRIDAY

### 56th Biannual Senior Exhibition of Fine Arts

Fulton Hall, University Gallery; 5-7 p.m.

SU ART GALLERIES EXHIBIT AWARDS RECEPTION



## 19 WEDNESDAY

### Forest Gnomes Enchanted Tea Party

Holloway Hall, Great Hall, 5 p.m.

Cost: \$18.95 per person (adult must accompany child)  
Tickets available at the Guerrieri University Center Information Desk beginning Mon., March 13.

SPECIAL EVENT: Explore our enchanted woodland forest – you should "gnome" there is magic in the woods. Sip on tea and Fairie Fizz while feasting on a selection of "snailwiches," desserts and other forest delights. Don your pointy hats and fairy wings as "Head Gnome" Ben Sota leads an afternoon filled with songs, dance and forest merriment. \* \$

## 15 SATURDAY

### Drop In Art Third Saturdays

Ward Museum, 10 a.m.-Noon

CLASS: Join a different artist every third Saturday for this family art program that is fun for all ages. Families can drop-in to make and take a fun art creation. All children should be accompanied by an adult.

## 16 SUNDAY

### Easter Dinner

Commons, Bistro, 4:30-7:30 p.m.

INTERNATIONAL DINNER  
SERIES: \$ \*

## 17 MONDAY

### Belly Dancing

Holloway Hall, Great Hall, 5 p.m.

CLASS: See April 3 for details. \*

## 18 TUESDAY

### Philosophy as Education: How Can It Help Our Communities?

Cristina Cammarano, Philosophy  
Conway Hall 152, 3:30 p.m.

FULTON FACULTY

COLLOQUIA: See February 21 for series details.

## 20 THURSDAY

Through May 20

### Time Lapse: New Work by Walter Zimmerman

SU Art Galleries Downtown Campus

EXHIBIT: View recent works by the current artist-in-residence with the SU Glass Program.



## 20 THURSDAY

### Discover SU: SU Art Galleries

4:30 p.m.

TOUR: This month's tour is led by Director of Galleries Elizabeth Kauffman.

Registration required:  
[www.salisbury.edu/cell](http://www.salisbury.edu/cell); location is sent with confirmation email. For series details see January 26.

## 20 THURSDAY

### Children's Literature Festival

Guerrieri Center, Wicomico Room, 4:30 p.m.

OPENING EVENT: For details on additional festival events as the date approaches, visit [www.salisbury.edu/childlitfestival](http://www.salisbury.edu/childlitfestival).

## 20-23\*

### Spring Dance Concert

Holloway Hall Auditorium, 8 p.m. & \*2 p.m.

SU DANCE COMPANY: The program features works by guest artists and resident faculty. \$



## 21 FRIDAY

### Artist Talk with Walter Zimmerman

SU Art Galleries Downtown Campus, 4 p.m.

ARTIST TALK: Reception immediately following the talk.

## 21 FRIDAY

### The Empathy of Song • Featuring Baritone William Willis Accompanied by Pianist Susan Zimmer

Holloway Hall, Great Hall, 7 p.m.

PETER & JUDY JACKSON CHAMBER MUSIC SERIES: Willis earned a B.A. in music - vocal performance at SU and an M.M. in vocal performance at the University of North Carolina at Greensboro. For two consecutive years, he placed in the top three in his category at the Maryland-Washington, D.C. National Association of Teachers of Singing Competition. At SU, Willis portrayed the Sorcerer in SU's first opera production *Dido and Aeneas*. At Greensboro, he performed several opera productions, including Warden Frank in *Die Fledermaus*, Mr. Gobineau in *The Medium* and Melchior in *Amahl and the Night Visitors*. He also has participated in Handel's *Messiah*, Bach's *Magnificat*, *The Boyfriend* and various other performances. 🌟



## 24 MONDAY

Mondays Through May 15

### Balancing Your Energy With Yoga Series

Holloway Hall Front Lawn, 5 p.m.

Rain: Holloway Hall Aud. Stage

CLASS: Join yoga instructor Madhumi Mitra for an hour-long open session of hatha yoga and chakra workout, blending hatha flow and dance. 🌟

## 24-30

### Ward World Championship Education Conference

Ocean City, MD

CLASSES: Learn to create award-winning carvings with World Champion and professional carvers. A full menu of four-day, three-day and two-day classes are offered in conjunction with the Ward World Championship. Exciting offerings available during the conference include classes from Rich Smoker, Del Herbert, Laurie Truehart and Jerry Painter. Visit [www.wardmuseum.org](http://www.wardmuseum.org) or call 410-742-4988, ext. 104 for costs and details. 💰

## 27 THURSDAY

### After Marriage: New Frontiers for LGBTQ Rights

Fulton Hall 111, 7 p.m.

GLOBAL CONNECTIONS, GLOBAL ENGAGEMENT LECTURE FORUM: SU faculty Kara French discusses the continuing fight for LGBTQ civil rights in the wake of Obergefell v. Hodges, the landmark 2015 Supreme Court decision that legitimized same sex marriage. Discuss transgender rights and activism, LGBTQ politics internationally, and the emerging asexuality movement. *Sponsored by the History Department.*

## 28-29

### SU Relay For Life Maggs Gym & Perdue Lawn, 6 p.m.-6 a.m.

SPECIAL EVENT: For more information visit [www.SUrelay.org](http://www.SUrelay.org).



## 28-30

### 47th Annual Ward World Championship Wildfowl Carving Competition & Art Festival

Roland E. Powell Convention Center Ocean City, MD

Friday, 10 a.m.-5 p.m.

Saturday 9 a.m.-5 p.m. • Award Ceremony 5 p.m.

Sunday 10 a.m.-4 p.m.

From highly decorative works of art to functional hunting decoys, some 1,200 wildfowl carvings, representing more than 150 species from around the world, can be viewed at the premiere, most prestigious competition in the world. Competitors of all levels – from youth to world champions – compete against their peers for the chance to win a portion of nearly \$60,000 in prize money.

Shop vendors offer world-class wildlife carvings, sculptures, paintings, folk art, jewelry, photography and much more. The Carvers Art Shop gives shoppers the opportunity to purchase original carvings from many of the shows competitors.

Take part in the live auction Saturday, which begins at 2 p.m. and offers one-of-a-kind works of art available to the highest bidder, with all the proceeds benefiting the Ward Museum. 💰

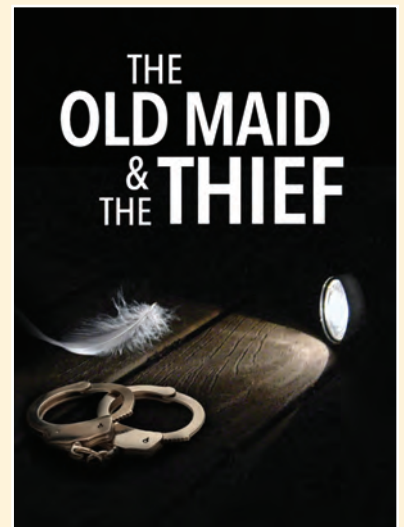
*Multi-day passes are available, which may be purchased at the door and at [www.wardmuseum.org](http://www.wardmuseum.org). Children 12 and under are free when accompanied by a paying adult. For more information, call 410-742-4988, ext. 106, or visit the Ward Museum website.*

## 27-30\*

### The Old Maid & The Thief Holloway Hall, Great Hall, 8 p.m. & \*2 p.m.

SU OPERA WORKSHOP: Gossip? Intrigue? Small town secrets? This 1939 comic opera, originally conceived for NBC Radio, has it all! Following her riveting portrayal of Sister Angelica's aunt (The Principessa) last season, mezzo-soprano Lucia Bradford returns to sing the role of The Old Maid (Miss Todd), performing alongside the award-winning vocalists of SU's Music Program.

Directed by John Wesley Wright, Tom Anderson and William M. Folger. 💰



## 1 MONDAY

### Balancing Your Energy With Yoga Series

Holloway Hall Front Lawn, 5 p.m.  
Rain: Holloway Hall Aud. Stage  
CLASS: See April 24 for details. 🌟

## 1 MONDAY

### 56th Biannual Senior Exhibition of Graphic Design

Fulton Hall, University Gallery  
Awards Reception:  
Fri., May 12, 5-7 p.m.  
SU ART GALLERIES EXHIBIT

## 3 WEDNESDAY

### Multicultural Festival

Guerrieri University Center,  
Pergola, 11 a.m.-3 p.m.  
(Rain Location: Wicomico Room)

The annual event features music, entertainment, and SU clubs information tables.

## 3 WEDNESDAY

### Flavors of the Caribbean Islands Dinner Featuring the Steel Kings

Commons, Bistro, 4:30-7:30 p.m.

INTERNATIONAL DINNER SERIES: The Steel Kings Steel Drum Band was formed over 20 years ago by traditional recording artist Terrence Cameron. His music and skills are well known throughout the United States and the Caribbean. The band's instrumentation consists of various types of steel drums, keyboard, vocals and other percussion instruments. 💰 🌟

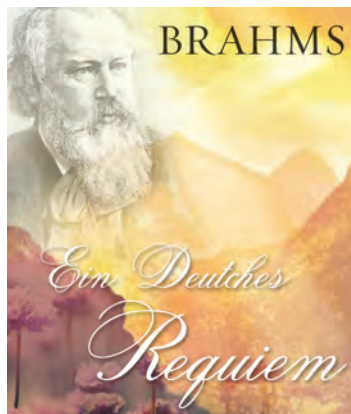


## 3 WEDNESDAY

### Amina Gautier Reading

Perdue Hall, Bennett Family Auditorium, 8 p.m.

WRITERS ON THE SHORE: Gautier is the author of three award-winning short story collections. *At-Risk* was awarded the Flannery O'Connor Award, The First Horizon Award and the Eric Hoffer Legacy Fiction Award. *Now We Will Be Happy* was awarded the Prairie Schooner Book Prize in Fiction, the International Latino Book Award, the Florida Authors and Publishers Association President's Book Award, a National Silver Medal IPPY Award, and was a Finalist for the William Saroyan International Prize. *The Loss of All Lost Things* was awarded the Elixir Press Award in Fiction and the Chicago Public Library's 21st Century Award.



## 6 SATURDAY

### Salisbury & University Chorales

Holloway Hall Auditorium,  
7:30 p.m.

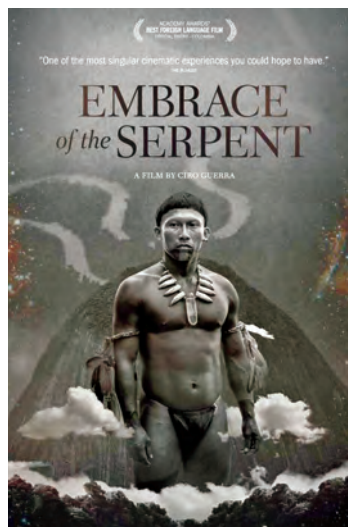
CONCERT: Artistic Director William M. Folger and the Salisbury and University Chorales perform Brahms' *Ein Deutsches Requiem*, featuring orchestra and guest soloists. 💰

## 6 SATURDAY

### Nabb Center Annual Fundraising Event

Harrington, Somerset County, MD, 4-7 p.m.

SPECIAL EVENT. Visit the private, historic home "Harrington" in Somerset County, MD, for an evening of good friends and good cheer. Tickets and reservation information available in spring. 💰



## 7 SUNDAY

### Embrace of the Serpent

Fulton Hall 111, 2:30 p.m.  
SALISBURY FILM SOCIETY: Filmed in stunning black and white, the film centers on Karamakate, an Amazonian shaman and the last survivor of his people, and the two scientists who, over the course of 40 years, build a friendship with him. The film was inspired by the real-life journals of two explorers who traveled through the Colombian Amazon in search of the psychedelic Yakruna plant. 💰

## 8 MONDAY

### Balancing Your Energy With Yoga Series

Holloway Hall Front Lawn, 5 p.m.  
Rain: Holloway Hall, Great Hall  
CLASS: See April 24 for details. 🌟

## 9 TUESDAY

### Salisbury Pops

Holloway Hall Auditorium,  
7:30 p.m.  
CONCERT

## 10 WEDNESDAY

### A Brief Relation of the State of Delmarva

Guerrieri Academic Commons, Assembly Hall, 7 p.m.  
NABB CENTER LECTURE: Economist and historian Phillip LeBel explores the age-old question of statehood for Delmarva.



## 11 THURSDAY

### Visiting Graphic Designer Erick Pfleiderer

Fulton Hall 111, 5 p.m.  
SU ART GALLERIES LECTURE: SU alumnus Pfleiderer started his career over 20 years ago, designing and coding websites. He has accumulated over 30 design awards for his work at various D.C.-area non-profits and design agencies. He serves as creative director at Taoti Creative. Hear his story and what he thinks it takes for young creatives to be successful in the design world today.

## 13 SATURDAY

**The Magic of the Flute • Sarah Jackson, Piccolo & Flute**  
Holloway Hall Auditorium, 7:30 p.m.

SALISBURY SYMPHONY ORCHESTRA: Jackson has held the position of piccolo for the Los Angeles Philharmonic since 2003. Prior to this, in 1993, she joined the Vancouver Symphony Orchestra. She is a much-sought-after piccolo and flute teacher, and she attracts students from around the world. Jackson is also an active chamber musician, soloist, clinician and freelance artist, and she has played for numerous films, CD recordings, and TV and radio broadcasts. \$



## 11 THURSDAY

**Jazz Ensemble**  
Holloway Hall Auditorium,  
7:30 p.m.  
CONCERT

## 12 FRIDAY

**56th Biannual Senior Exhibition of Graphic Design**  
Fulton Hall, University Gallery;  
5-7 p.m.  
SU ART GALLERIES EXHIBIT  
AWARDS RECEPTION

## 15 MONDAY

**Presidential Citizen Scholars: Informed & Engaged**  
Fulton Hall 111, 6 p.m.  
PACE LECTURE: Presidential Citizen Scholars from SU's Institute for Public Affairs and Civic Engagement (PACE) present their capstone civic engagement project. Students from multiple majors worked together to promote the campus bike-share program and developed resources to encourage healthy eating and wellness on campus. A reception follows.

## 19-20

**Apology of the Life of an Actor**  
Fulton Hall, Black Box Theatre,  
7:30 p.m.

SU THEATRE: Celebrate the artistic career of SU's T. Paul Pfeiffer. Written and acted by Pfeiffer, he presents "A Comic Representation of a Life in the Theatre in the Early 18th Century; Based on the Memoirs of Colley Cibber, Actor, Manager of the Drury Lane Theatre and Poet Laureate." Known as the "Father of Sentimental Comedy" and his adaptations of Shakespeare "to make him fitter for the stage," Cibber's sheer self-confidence drew biting criticism. Yet his sense of theatre was keen, and what he had to say about theatre and acting is as true today as it was in 1745. In his dressing room, Cibber prepares for his farewell performance as Lord Foppington – the role that earned him his reputation as an actor 55 years before. Surrounded by friends (the audience), he is in his element – revealing with malicious joy and an unerring sense of theatre his tempestuous relationships with his contemporaries and the theatre. \$

## 15 MONDAY

**Balancing Your Energy With Yoga Series**  
Holloway Hall Front Lawn, 5 p.m.  
Rain: Holloway Hall, Great Hall  
CLASS: See April 24 for details.  
⊕

## 16 TUESDAY

**Creating Space for Creative Spaces: Contemporary Artistic Responses to Neoliberal Capitalism in Spain**  
**Sally Perret, Modern Languages**  
Conway Hall 152, 3:30 p.m.  
FULTON FACULTY  
COLLOQUIA: See February 21 for series details.

## 16 TUESDAY

**PRESTO Students**  
Holloway Hall, Great Hall,  
5 p.m. & 7 p.m.  
CONCERTS

## 18 THURSDAY

**Discover SU: Arboretum**  
4:30 p.m.  
TOUR: This month's tour is led by Senior Horticulturist William Lowery.  
Registration required:  
[www.salisbury.edu/cell](http://www.salisbury.edu/cell); location is sent with confirmation email. For series details see January 26.

## 18 THURSDAY

**Youth Orchestra**  
Holloway Hall Auditorium,  
7:30 p.m.  
CONCERT



# may

## 19 FRIDAY

Through September 24

### Backyard Birds & Birdhouses

Ward Museum, LaMay Gallery  
Reception: Sat., May 20  
(in conjunction with the  
Delmarvalous Festival)

EXHIBIT: The beauty of nature is right outside your window. In rural and urban areas alike, migrating and residential birds bring a splash of color through the seasons. Birdhouses are equal in the variety of their design and vibrant colors. This exhibit showcases the diversity of backyard birds and birdhouses. \$

## 20 SATURDAY

### Delmarvalous Festival

Ward Museum

Look for details in the spring

This festival showcases the traditional lifeways and cultural traditions of Delmarva as interpreted by regional tradition bearers – ship builders, fishermen, vernacular artists, cooks and bakers, musicians, and more. Indoor and outdoor event includes activities and programs for all ages.



# june

## 1 THURSDAY

Through July 15

### Living on the Land

SU Art Galleries Downtown  
Campus

EXHIBIT: View this group exhibition curated by Jayme McLellan of Civilian Art Projects in Washington, D.C.



## 3-4

### Carve & Paint an Long-tailed Duck in Summer Plumage

Ward Museum, 8 a.m.-5 p.m.

CLASS: Work with Ward Museum World Champion Carver and Living Legend Rich Smoker to create a hunting-style decoy. Using hand or power tools, carve and paint this incredible arctic wonder. Starting with a body, head and tail plank, all parts will be carved, assembled and painted by the end of class. \$

## 10 SATURDAY

### Feast Salisbury!

Downtown Plaza, 6 p.m.

SU ART GALLERIES EVENT:

A creative, sit-down dinner outside on the Downtown Plaza features culinary delights offered by local chefs while raising money for the visual arts in Salisbury. Visit [suartgalleries.org](http://suartgalleries.org) for tickets and additional information. \$

*Sponsored by the Office of Community and Government Relations.*

## 15 & 17\*

THURSDAY & SATURDAY

### Party on the Pond

### A Ward Museum Open House

Ward Museum, 5-8 p.m. & \*10 a.m.-2 p.m.

SPECIAL EVENT: Enjoy fun and celebration, showcasing the museum's newly completed facilities, including the new Legacy Center. Imagine your next event – including children's events – at the Ward Museum while you enjoy live music, a sampling of hors d'oeuvres from local caterers and bakeries, and complementary cocktails.



## 19 MONDAY

Through August 12

### Untitled (domestic gestures)

Conway Hall,  
Electronic Gallery

SU ART GALLERIES EXHIBIT: Artist Tania Lou Smith combines humor, costume, composition and play in a series of performance videos detailing small acts of escape.

# july/august

## 1 JULY SATURDAY

Saturdays Through July 29

### Backyards & Birds Series

Ward Museum

Look for details in the spring CLASS: Build fixtures for your backyard, including birdhouses, rain barrels, bird feeders, and other decorative and useful features to create the ultimate area for relaxation and bird viewing. \$



## 14 JULY FRIDAY

### Beer Pairing at the Ward

Ward Museum, 6-8 p.m.

CLASS: Learn the fine art of pairing with the second lesson in the 2017 series. Learn from experts what to pair with tasty treats and dinners. \$



## 11-13\*

AUGUST

### Seventh Annual Art in Nature Photo Festival

Ward Museum; 10 a.m.-5 p.m., \*10 a.m.-4 p.m.

SPECIAL EVENT: Photographers of all levels are invited to submit their photos for the competition in one of the five categories: birds, landscape/scenery, macro/micro, black and white, and smart device. Designed to help improve all aspects of their photography, participants have the opportunity to attend a variety of lectures, seminars and workshops led by professional photographers.



## 4 AUGUST FRIDAY

Through January 14, 2018

### Retrievers: The Hunter's Best Friend

Ward Museum, Welcome Gallery

EXHIBIT: The Retriever in its many breeds have been the hunter's companion, performing essential tasks in the field for hundreds of years. This connection between dog and outdoorsman has been depicted in sporting art, recorded in literature and prized at canine competitions. The exhibit is being held in conjunction with the Golden Retriever Club of America's National Specialty held in Salisbury, September 2017. \$



## 7-10 AUGUST

### Photography Camp

Ward Museum, 9 a.m.-3 p.m.

CLASS: Look for details as the dates approach. \$

## 21-24 AUGUST

### Art Camp

Ward Museum, 9 a.m.-3 p.m.

CLASS: Look for details as the dates approach. \$

# contacts & categories

All events are listed here by their sponsoring program/department. Find out the date of the event in which you are interested and look to the calendar for more information. Phone numbers are provided in case you have questions.

## Adventures In Ideas: Humanities Seminar • 410-543-6450

- Feb. 18 .....Mysteries of Memory With Timothy Stock  
Apr. 1 .....Cabaret in Context: Culture & Politics Between the Wars  
With Victoria Pass, Maarten Pereboom & Leanne Wood

## African American History Month • 410-548-4503

- Jan. 3-May 31: When Communities Come Together: African American Education on the Eastern Shore Exhibit  
Feb. 9 .....Cross-Cultural Education and African American Museums Keynote Lecture  
Feb. 10 .....Soul Food Dinner Featuring Bernard Sweetney  
Feb. 13 .....Finding the Ancestors: Tracing African American Genealogy Lecture  
Feb. 22 .....The Lottery Film & Discussion  
Feb. 23 .....Addressing the Crisis in Black Education Panel Discussion  
Feb. 28 .....Student Perspectives on Black Education Student Panel Discussion  
March 4 .....Multicultural Leadership Summit  
March 9 .....Rosenwald: The Remarkable Story of a Jewish Partnership with African American Communities Reception & Film  
Apr. 14 .....African Heritage Dancers & Drummers Performance

## Children's Literature Festival • 410-543-6509

- Apr. 20

## Cultural Affairs Office • 410-543-6271

- Feb. 6-March 6 (Mondays) .....Meditation Class  
March 13-17 .....Tibetan Monks' Residency  
April 3-17 (Mondays) .....Belly Dancing Class  
March 29 .....Shaolin Warriors Performance  
Apr. 4 .....Tango Lovers  
Apr. 11 .....The Fourth Light Project Featuring Niyaz Concert  
Apr. 19 .....Forest Gnomes Enchanted Tea Party  
Apr. 24-May 15 (Mondays) .....Balancing Your Energy With Yoga Series

### BRIDGES TO THE WORLD INTERNATIONAL FILM SERIES

- Feb. 6 .....The Wind Journeys  
Feb. 13 .....The Beauty Inside  
Feb. 20 .....Son of Saul  
Feb. 27 .....Factory Girl  
March 6 .....Film Title TBA

### INTERNATIONAL DINNER SERIES

- Feb. 10 .....Soul Food Dinner Featuring Bernard Sweetney  
Feb. 28 .....Mardi Gras Dinner Featuring Such Fools Band  
March 14 .....A Taste of Tibet Dinner  
March 16 .....St. Patrick's Day Dinner Featuring the Folk Heroes  
Apr. 13 .....Passover Dinner  
Apr. 16 .....Easter Dinner  
May 3 .....Flavors of the Caribbean Islands Dinner Featuring the Steel Kings

### PETER & JUDY JACKSON CHAMBER MUSIC SERIES

- March 27 .....Hugo Kauder Trio  
Apr. 21 .....The Empathy of Song: Baritone William Willis Accompanied by Pianist Susan Zimmer

## Discover SU: Center for Extended & Lifelong Learning • 410-543-6089

- Jan. 26 .....Sustainability Initiatives at SU  
Feb. 23 .....Preparing Thousands of Meals a Day  
March 16 .....SU's Ward Museum  
Feb. 20 .....SU Art Galleries  
May 18 .....University Arboretum

## Environmental Studies Colloquium Series • 410-543-8105

- Feb. 8 .....Study Abroad Experiences  
Feb. 22 .....Pipelines & the Public Square  
March 15 .....Green Infrastructure & Sustainability: The Weaver Bird Arboretum & Apiary in Africa  
Apr. 12 .....Landscape Simplification & Pollinators: Can We Design Agricultural Systems that Maintain Ecosystem Services?

## Food Systems & Sustainability (IDIS 280) Classes • 410-543-6430

- Jan. 30-May 15 (Select Mondays)

## Fulton Faculty Colloquia • 410-543-6450

- Feb. 21 .....Let's Talk About Learning: Children's Memories of How They Learn -  
Rhyannon Bemis, Psychology  
March 7 .....Limits of Pax Britannica: Railway Crime & Criminals in Colonial India -  
Aparajita Mukhopadhyay, History  
Apr. 18 .....Philosophy as Education: How Can It Help Our Communities? -  
Cristina Cammarano, Philosophy  
May 16 .....Creating Space for Creative Spaces: Contemporary Artistic Responses to Neoliberal  
Capitalism in Spain - Sally Perret, Modern Languages

## Global Connections, Global Engagement Lecture • 410-543-6245

- Apr. 4 .....Black Activism Across Borders - The Global Dimensions of Solidarity  
Apr. 27 .....After Marriage: New Frontiers for LGBTQ Rights

## Music, Theatre and Dance Department • 410-548-5588

### MUSIC PROGRAM

- Feb 10-11 .....Sound of Music Sing-A-Long  
Feb. 15 .....Russian Revolutionaries - Allegheny Ensemble Concert  
Feb. 23 .....Singer's Showcase Concert  
March 7 .....SU & UMES Third Annual Trombone Day  
March 30 .....New Music Salisbury Concert  
Apr. 6 .....An Evening of Percussion  
Apr. 7 .....SPF 17 Featured Artist  
Apr. 8 .....Percussion Studio Recital  
Apr. 27-30 .....The Old Maid & The Thief  
May 6 .....Salisbury & University Chorales Concert  
May 9 .....Salisbury Pops Concert  
May 11 .....Jazz Ensemble Concert  
May 16 .....PRESTO Students Concerts  
May 18 .....Youth Orchestra Concert

### BOBBI BIRON THEATRE

- Jan 21-22 .....Tales of the Eastern Shore  
March 30-Apr. 3 & Apr. 6-9 .....Cabaret  
May 19-20 .....Apology of the Life of an Actor

### SU DANCE COMPANY

- Apr. 20-23 .....Spring Dance Concert

### **Nabb Center • 410-543-6312**

Jan. 3-Aug 31 .....Delmarva: People, Place & Time Exhibit  
Jan. 3-May 31 .....The Stage Is Set: Leland Starnes & the Salisbury State Theatre Exhibit  
Jan. 3-May 31 .....When Communities Come Together: African American Education on the Eastern Shore Exhibit  
Feb. 9 .....The Stage Is Set: Leland Starnes & the Salisbury State Theatre Exhibit Reception  
Feb. 13 .....Finding the Ancestors: Tracing African American Genealogy Lecture  
March 9.....Rosenwald: The Remarkable Story of a Jewish Partnership with African American Communities Reception & Film  
May 6 .....Nabb Center Annual Fundraising Event at "Harrington"  
May 10 .....A Brief Relation of the State of Delmarva Lecture

### **PACE (Institute for Public Affairs and Civic Engagement) 410-677-5045**

March 30 .....Election Autopsy - A Historian Looks at the 2016 Election Lecture  
May 15.....Presidential Citizen Scholars: Informed & Engaged Lecture

### **Philosophy Symposium • 410-677-5070**

Apr. 8 .....37th Annual SU Philosophy Symposium - Just Kids? What Philosophy Can Do for Children & What Children Can Do for Philosophy

### **Relay For Life • 410-543-6030**

Apr. 28-29

### **Salisbury Film Society • 410-543-ARTS (2787)**

Feb. 5 .....Cafe Society  
March 5 .....Phoenix  
Apr. 2 .....Lo and Behold, Reveries of the Connected World  
May 7 .....Embrace of the Serpent

### **Salisbury Symphony Orchestra • 410-543-8366**

March 11 .....Children's Concert - Really Inventive Stuff  
May 13.....The Magic of the Flute: Sarah Jackson, Piccolo & Flute

### **SU Art Galleries • 410-548-2547**

Jan. 30-March 18 .....Art Department Faculty Exhibition  
Feb. 9-March 17 .....Nature/Nurture Exhibit  
Feb. 10 .....From the Studio to the Classroom Discussion  
Feb. 27-March 11 .....Intermedia a go-go! Exhibit  
March 9 .....seed journeys and hidden legacies With Onajide Shabaka Artist Talk  
March 30-June 10 .....IN TRAINING Exhibit  
Apr. 3-22 .....56th Biannual Senior Exhibition of Fine Arts  
Apr. 6 .....Artist Talk with Amber Cowan  
Apr. 13 .....Seeing Sound Series: Volume 2 - Kristen Anchor Presents Everyman as Anyman, or Putting On, On, On, On, On Performance  
Apr. 20-May 20 .....Time Lapse: New Work by Walter Zimmerman Exhibit  
Apr. 21 .....Artist Talk with Walter Zimmerman  
May 1-20 .....56th Biannual Senior Exhibition of Graphic Design  
May 11 .....Visiting Graphic Designer Erick Pfeleiderer Lecture  
June 1-July 15 .....Living on the Land Exhibit  
June 10 .....Feast! Salisbury  
June 19-Aug. 12 .....Untitled (domestic gestures) Exhibit

### **Tournées French Film Festival • 410-543-6038**

Feb. 1 .....Dans la cour (In The Courtyard)  
Feb. 9 .....Les Adieux à la Reine (Farewell, My Queen)  
Feb. 15 .....La Cour de Babel (School of Babel)  
Feb. 23 .....Pierrot le fou  
March 1 .....Couleur de Peau: Miel (Approved for Adoption)  
March 9 .....Saint Laurent

### **Ward Museum • 410-742-4988**

Through January 22 .....Chincoteague Decoys: Tides & Time Exhibit  
Through February 12 .....Chincoteague Expressions: Artists in their Environment Exhibit  
Jan. 21 .....Drop In Art: Scientific Illustration  
Jan. 27-May 14 .....Scientific Illustration: Artistry in the Age of Science Exhibit  
Feb. 7 (Every Tuesday) ..eBird Tuesdays  
Feb. 11 .....Second Chance Jewelry Auction  
Feb. 17-April 2 .....Illustrating Nature Student Art Show  
Feb. 18 .....Drop In Art Third Saturdays  
March 4-5 .....Lightroom: A Complete Digital Workflow for Photo Editing Class  
March 10 .....Valuing Bird Biodiversity Using Citizen Science Lecture & Workshop  
March 18 .....Drop In Art Third Saturdays  
March 24 .....Wine Pairing at the Ward Class  
March 25 .....You Can Go Home Again - Why Personal & Place Story Matters in Conversation Workshop  
Apr. 7-July 30 .....Talents Unveiled: A Volunteer Art Showcase  
Apr. 15 .....Drop In Art Third Saturdays  
Apr. 24-30 .....Ward World Championship Education Conference  
Apr. 28-30 .....47th Annual Ward World Championship Wildfowl Carving Competition & Art Festival  
May 19-Sept. 24 .....Backyard Birds & Birdhouses Exhibit  
May 20 .....Delmarvalous Festival  
June 3-4 .....Carve & Paint an Long-tailed Duck in Summer Plumage with Rich Smoker  
June 15 & 17 .....Party on the Pond: A Ward Museum Open House  
July 1-29 (Saturdays) ..Backyards & Birds Series Class  
July 14 .....Beer Pairing at the Ward Class  
Aug. 4-Jan. 14, 2018...Retrievers: The Hunter's Best Friend Exhibit  
Aug. 7-10 .....Photography Camp  
Aug. 11-13 .....Seventh Annual Art in Nature Photo Festival  
Aug. 21-24 .....Art Camp

### **Women's History Month • 410-543-6450**

Jan. 3-May 31 .....When Communities Come Together: African American Education on the Eastern Shore Exhibit  
March 2 .....American Experience: Dolley Madison Film & Roundtable  
March 16 .....Women's History Month Keynote Lecture

### **Writers On The Shore • 410-543-6250**

March 1 .....Melinda Moustakis  
Apr. 5 .....Kathryn Nuernberger  
May 3 .....Amina Gautier

# general info, hours & costs

## To make your visit to SU enjoyable, here are a few helpful hints:

- Follow SU on social media for all the latest:



- INFORMATION:** If you need more information, want to confirm a date or have questions:

- Call the cultural events hotline at 410-677-4685.
- Visit: [www.salisbury.edu/newsevents](http://www.salisbury.edu/newsevents)

- ARTS MINUTE:** You can receive the SU Arts Minute weekly email. Just send an email requesting to join the mailing list to: [publicrelations@salisbury.edu](mailto:publicrelations@salisbury.edu)

- CULTURAL AFFAIRS EMAIL:** You can receive the This Week at SU Cultural Affairs weekly email. Just send an email requesting to join the mailing list to: [culturalaffairs@salisbury.edu](mailto:culturalaffairs@salisbury.edu)

### Office of Cultural Affairs

Holloway Hall 267  
For organization or event information call: 410-543-6271 or 410-548-5697  
[www.salisbury.edu/culturalaffairs](http://www.salisbury.edu/culturalaffairs)  
Facebook: Cultural Affairs at Salisbury University  
Twitter: @SU\_CulAffairs  
[jekrell-salgado@salisbury.edu](mailto:jekrell-salgado@salisbury.edu)  
[culturalaffairs@salisbury.edu](mailto:culturalaffairs@salisbury.edu)

### Cultural Laureate Program

Holloway Hall 260  
For information visit:  
[www.salisbury.edu/culturalaffairs/clp](http://www.salisbury.edu/culturalaffairs/clp)  
[culturalaffairs@salisbury.edu](mailto:culturalaffairs@salisbury.edu)

### International Dinner Series

Commons, Bistro  
4:30-7:30 p.m.  
Most meals have entertainment from 5-7 p.m.  
Cost (plus tax): \$12.98;  
children (5 & under) \$7.87

### Adventure in Ideas: Humanities Seminar Series

Cost (including continental breakfast and lunch) \$30  
*Sponsored by the Fulton School of Liberal Arts and the Whaley Family Foundation.*

For more information contact the Fulton School Dean's Office, Donna Carey:  
410-543-6450 or  
[dmcarey@salisbury.edu](mailto:dmcarey@salisbury.edu)

### Nabb Research Center for Delmarva History & Culture

Guerrieri Academic Commons,  
Fourth Floor  
Mon.: 10 a.m.-8 p.m.  
Tues.-Fri.: 10 a.m.-4 p.m.  
410-543-6312

### Salisbury Film Society

Doors open at 2 p.m. Program begins at 2:30 p.m.  
ADMISSION  
■ \$8 Salisbury Wicomico Arts Council members  
■ \$9 non-members  
■ Free students  
■ \$20 4-film season ticket

### SU Art Galleries

- University Gallery  
Located in Fulton Hall, just off the main lobby in Room 109
- Downtown Campus Gallery Building,  
212 West Main Street
- Electronic Gallery  
Conway Hall 128

For SU Art Galleries hours, visit or call:  
[www.salisbury.edu/universitygalleries](http://www.salisbury.edu/universitygalleries)  
410-548-2547

### Music, Theatre & Dance Department Ticketed Events

#### ADMISSION:

- \$12 adults
- \$9 seniors 62+, SU alumni & all students (ID required)
- One free with SU ID (Thursday nights ONLY - Reservation required)
- Groups of 10 or more call for reservations and pricing

#### CHILDREN'S THEATRE

##### ADMISSION:

- \$5 general admission
- One free adult with child

#### APOLOGY OF THE LIFE OF AN ACTOR ADMISSION:

- May 19: free
- May 20: Fundraiser & Gala - look for details and costs

#### SPECIAL NEEDS PATRONS

- Please call the Box Office in advance to request special seating

#### TO PURCHASE TICKETS

- Cash, Visa, MasterCard and checks payable to Salisbury University accepted
- Online 24/7  
[www.salisbury.edu/performingarts](http://www.salisbury.edu/performingarts)  
Ticket operations fee applied
- By Phone: 410-543-6228
- At the Box Office  
Fulton Hall 100  
Monday-Friday,  
10 a.m.-4 p.m.

#### PLEASE ARRIVE ON TIME!

- For Black Box Theatre performances, guests who already have tickets are encouraged to arrive 30 minutes prior to the scheduled curtain time. All late seating is at the discretion of theatre management.

### Ward Museum of Wildfowl Art

909 S. Schumaker Drive  
Salisbury, MD; 410-742-4988

#### HOURS

- Mon.-Sat.: 10 a.m.-5 p.m.
- Sun.: Noon-5 p.m.

#### ADMISSION

- SU Faculty, Staff & Students: Free (w/SU ID)
- Adults: \$7,
- Seniors (60 & over): \$5
- Students (K-12): \$3
- College (w/college ID): \$3
- Adults (w/AAA card): \$6
- Family Rate (parents & children 18 & under): \$17

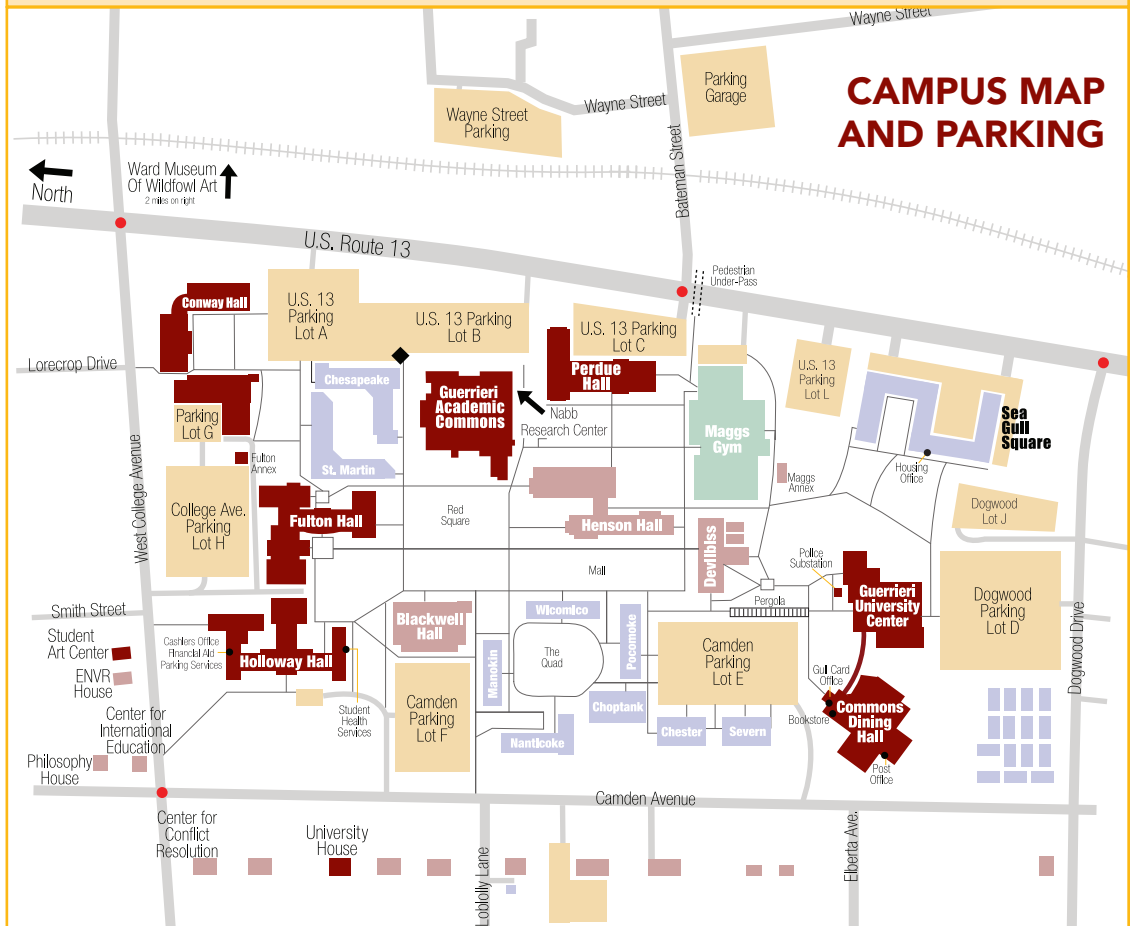
#### CLASSES & SPECIAL EVENTS

FEES: Education events are subject to change. For registration visit:

[www.wardmuseum.org](http://www.wardmuseum.org)

- March 4-5  
Lightroom: A Complete Digital Workflow for Photo Editing  
\$200 Ward members, faculty, students; \$225 general
- March 24  
Wine Pairing at the Ward  
\$25 per person or \$45 per couple Ward members  
\$30 per person or \$55 per couple general
- March 25  
You Can Go Home Again: Why Personal & Place Story Matters in Conversation  
\$100 for Ward members  
\$125 for general
- June 3-4  
Carve & Paint an Long-Tailed Duck in Summer Plumage  
\$160 Ward members  
\$200 general
- Saturdays, July 1-29  
Backyards & Birds Series  
Cost is per Saturday  
\$50 for Ward members  
\$65 for general
- July 14  
Beer Pairing at the Ward  
\$25 per person or \$45 per couple Ward members  
\$30 per person or \$55 per couple general

The buildings highlighted in red are the facilities that most frequently host cultural events.  
Please note adjacent parking lots for ease of access. Visitors must display a **visitor parking pass**, which may be obtained free of charge from the Parking Services Office at 410-543-6338 or online at: [www.salisbury.edu/parking/visitors.html](http://www.salisbury.edu/parking/visitors.html)



### Salisbury Symphony Orchestra

ADMISSION:

- \$25 adults
- \$20 seniors 60+
- \$10 SU faculty/staff
- \$5 all students

### CHILDREN'S CONCERT (3/11)

ADMISSION:

- \$10 adults (including SU faculty/staff)
- \$5 students 13+
- Free children 12 and under with an adult

Visit [www.SalisburySymphonyOrchestra.org](http://www.SalisburySymphonyOrchestra.org)  
Click on the "Purchase Tickets" button.  
410-543-8366

### The Women's Circle of Salisbury University

For organization and event information:

410-677-0292  
[skgordy@salisbury.edu](mailto:skgordy@salisbury.edu)  
[www.facebook.com/suwomenscircle](http://www.facebook.com/suwomenscircle)

### SU & Association for Lifelong Learning

SU's popular lifelong learning series partners with the Association for Lifelong Learning in Salisbury. Explore subjects of interest to Delmarva residents age 50 and over presented as multi-session classes.

For more information:  
[assocforll@hotmail.com](mailto:assocforll@hotmail.com)  
410-422-2041

### Delmarva Public Radio

With exciting new programs and a bold new format, Delmarva Public Radio has rededicated itself to providing the best news, music, arts and culture from Delmarva – and around the world.  
[delmarvpublicradio.net](http://delmarvpublicradio.net)



WSCL 89.5 Fine Arts & Culture  
WSDL 90.7 Rhythm & News

### Institute for Public Affairs and Civic Engagement (PACE)

PACE is a non-partisan institute committed to undergraduate learning that sparks interest in public affairs and civic engagement, and acts as a resource center for local government, nonprofits and public groups.

[www.salisbury.edu/pace](http://www.salisbury.edu/pace)



### World Artists Experience, Inc.

SU is affiliated with World Artists Experiences, Inc., a non-profit organization committed to developing the vital role of the arts in building bridges of international understanding. By providing educational experiences with world artists in schools, colleges and communities, WAE seeks to foster an appreciation for the rich diversity and cultural commonalities of the world's citizens. Learn more at [www.WorldArtists.org](http://www.WorldArtists.org). For information about being part of SU's Ambassador Program, call 410-543-6271.



World Artists Experiences, Inc.

SU is an Equal Opportunity/AA/Title IX university and provides reasonable accommodation given sufficient notice to the University office or staff sponsoring the event or program. For more information regarding SU's policies and procedures, please visit [www.salisbury.edu/equity](http://www.salisbury.edu/equity).

Events are subject to change; for updates  
and corrections, visit: [www.salisbury.edu](http://www.salisbury.edu)

# SHAOLIN WARRIORS

**29 MARCH**  
**WEDNESDAY**

Holloway Hall Auditorium, 7 p.m.  
Free tickets (limit 2) available at  
the Guerrieri Center Information  
Desk beginning Mon., Feb. 27. 📍

