

SALISBURY UNIVERSITY ATHLETICS

Salisbury
UNIVERSITY

POSITION PROFILE • 2026



TABLE OF CONTENTS

SEA GULL HIGHLIGHTS 4

BY THE NUMBERS 5

FACILITIES 6

SALISBURY UNIVERSITY OVERVIEW 9

SALISBURY UNIVERSITY PRESIDENT 11

SALISBURY, MARYLAND 12



Make Tomorrow Yours
Go to salisbury.edu

Salisbury University is a proud member of the University System of Maryland.

Salisbury University is an equal educational and employment opportunity institution.





SEA GULL HIGHLIGHTS

NCAA CHAMPIONSHIPS

- **Men's Lacrosse:**
2023, 2017, 2016, 2012, 2011, 2008, 2007,
2005, 2004, 2003, 1999, 1995, 1994
- **Field Hockey:**
2009, 2005, 2004, 2003, 1986
- **Women's Lacrosse:**
2021, 2014, 2013, 2010
- **Baseball:**
2021

INDIVIDUAL NATIONAL CHAMPIONSHIPS

- **Track and Field:** 20
- **Wrestling (defunct):** 6

ACADEMIC ALL-AMERICANS

- **All-Conference:** More than 1,500
- **All-American:** 54

SU OLYMPIAN

Being the most-awarded student-athlete in NCAA Division III history was not enough for Sea Gull track and field standout Luke Campbell '16. In 2021, the world watched as he competed for Germany (where he holds dual citizenship) in the 400-meter hurdles and 4X400-meter relay at the Tokyo Summer Olympics.

TOP STANDING

SU is consistently one of the top schools in the NACDA Learfield Directors Cup standings.





BY THE NUMBERS

- **647** student-athletes in the 2026-2027 academic year
- **23** varsity sports
- Top four student-athlete majors:
 - Business (marketing and finance tracks are most popular)
 - Exercise Science
 - Education
 - Nursing
- **~3:1** ratio of transfers in vs. transfers out
- **3.271:** Departmental GPA in spring 2026
- **4** Scholar Athletes of the Year in respective conferences in 25-26
- Most recent six-year graduation rate
 - All Athletes **78%**
 - All students **61%**
- Most recent National Champions
 - Kai Smith 100 and 200 in OTF – 2026
 - Men's Lacrosse in 2023
 - Women's lacrosse in 2021
 - Baseball in 2021
- **23** team national championships
- **26** individual championships
- **211:** Total conference championship titles since 1994
- **54** Academic All-Americans
- **800+** All-Americans
- **38** All-Americans in 2025-2026

FACILITIES

suseagulls.com/facilities



DONNIE WILLIAMS SEA GULL BASEBALL STADIUM

Donnie Williams Sea Gull Baseball Stadium is the home of the Salisbury University baseball team. The new facility opened in the spring of 2018 and was renamed after SU alumnus Donnie Williams in 2022. The playing surface is entirely made of FieldTurf, except for the dirt pitching mound. The new field allows for fewer rainouts and delays due to the quick-drying nature of FieldTurf.

Williams Stadium features a wraparound grandstand that includes a chairback section directly behind home plate for optimal views. The stadium also features an inning-by-inning LED scoreboard, batting cages, press box, permanent ticket booths and large, heated dugouts.

SU INDOOR AND OUTDOOR TENNIS CENTER

The Salisbury University Indoor Tennis Center and SU Tennis Center (outdoor) are home to the Salisbury University men's and women's tennis teams.

Salisbury's outdoor courts are located on Bateman Street, as part of the East Campus area, across from the track and Margie Knight Sea Gull Softball Stadium. There are 12 outdoor hard courts, six of which are lighted.

The Indoor Tennis Center features three courts and locker rooms and is located on Milford Street next to the University Fitness Center, which is on the corner of Wayne and Milford Streets.



SU TRACK & FIELD COMPLEX

The Salisbury University Track & Field Complex, resurfaced in 2003, features an eight-lane, 400-meter oval and has hosted a number of local and regional championship meets, including the Capital Athletic Conference (CAC) and Coast-to-Coast Athletic Conference (C2C) championships on several occasions. The Bermuda grass infield is one of the finest in the Mid-Atlantic region.

SU WEIGHT ROOMS

There are three different weight training rooms on the campus of Salisbury University. In the Maggs Physical Activities Center there is a weight room on the first floor and fitness room located on the second level. In 2003, a new weight room facility to be used by varsity student-athletes as well as the general student population was created. The University Fitness Center is located on the East Main Campus near the football and sports information offices.

GERRY DIBARTOLO SEA GULL SOCCER COMPLEX

Opened for the 2017 season, and rechristened in 2023 in honor of longtime men's soccer coach and athletic director Dr. Gerry DiBartolo, the Gerry DiBartolo Sea Gull Soccer Complex has created a new and exciting environment for the men's and women's soccer teams. The facility, which sits on the same footprint as the old SU Soccer Complex, saw the fields overhauled with new seeding and drainage, with each field moved slightly to the south, allowing for other construction projects.

The area between the fields is new as of 2017, featuring permanent bleachers with seat backs and a new press box and sound system.

At the south end of the complex, a team room building stands with permanent bathrooms, a team room for each team, a concession stand and a locker room for officials.

GREEN HILL COUNTRY CLUB

Green Hill Country Club is the home of the Salisbury University men's and women's golf teams. The club was established in 1927 with a nine-hole golf course, with an additional nine holes added in 1955. The 18-hole course measures 6,477 yards from regular tees, 6,929 yards from championship tees, and 5,975 yards from women's tees.



MAGGS PHYSICAL ACTIVITIES CENTER

The Maggs Physical Activities Center is home to the Salisbury University varsity athletic program and Physical Education department. The main gymnasium, on the lower level, is home to the men's and women's basketball teams and the women's volleyball team. The main gym can seat over 2,300 fans and features a press box, wireless internet, sound system and an electronic scoreboard.

A recent addition to Maggs Physical Activities Center is the Recovery Zone, which features 16 full sets of Normatec compression gear, massage guns and other tools for student-athlete recovery, heated recliners, and a projector that allows full teams to use the space for film sessions. Many student-athletes, teams, coaches, and staff at SU utilize these resources.

There are both men's and women's general locker rooms along with varsity locker rooms on the first floor. The first floor is also home to the SU Campus Recreation office and the strength and conditioning office. There is a weight room on the first level and a fitness center upstairs. Also on the first level is the dance studio, racquetball courts, the pool, the athletic training offices and treatment rooms, the SU equipment room, and the brand-new Recovery Zone.

MAGGS PHYSICAL ACTIVITIES CENTER SWIMMING POOL

The Maggs Physical Activities Center Swimming Pool is home to the Salisbury University men's and women's swimming teams.

The facility boasts a six-lane, 25-meter pool. There are men's and women's locker rooms available to be used by visiting teams and patrons.

MARGIE KNIGHT SEA GULL SOFTBALL STADIUM

Margie Knight Sea Gull Softball Stadium opened in March 2017 with a sellout crowd of 500, including nearly 100 alumni of the program as players, coaches and support staff who were on hand to throw out ceremonial first pitches.

On May 6, 2023, the stadium was renamed in honor of SU Athletics and NFCA Hall-of-Famer Margie Knight, who won 846 as head coach of the Sea Gull softball team from 1996-2020.

Knight Stadium features seating for 500, a permanent ticket booth and bathrooms, as well as seating area wireless internet access for fans. The playing surface features a clay infield and artificial turf outfield, along with large, heated dugouts.

Other amenities include a press box, four batting cages and a conveniently located home and visiting bullpen.

Knight Stadium has hosted the NCAA Tournament on six occasions (2022-24 Regional/Super Regional).

SEA GULL STADIUM

Sea Gull Stadium is home to the SU field hockey, football, men's and women's lacrosse teams. The stadium, which holds a seating capacity of 5,000, was originally built in 1980 and has undergone two major upgrades.

The stadium received a new playing surface in the summer of 2007 when A-Turf replaced the grass field. Along with a new surface, lights were installed in the fall of 2007. The installed lights allowed the teams to play night games and practices throughout the year, offering ease in scheduling.



DEPARTMENT ORGANIZATION

Athletics & Campus Recreation

DIRECTOR OF ATHLETICS & CAMPUS RECREATION

- Sport Oversight of Football, Field Hockey, Men's Basketball, Men's Lacrosse
- Program Management Specialist
- Account Clerk
- Head Coaches
- Sports Information Assistants
- Head Athletic Trainer & Assistant Athletic Trainers
- Sports Performance Assistants

ASSOCIATE DIRECTOR OF ATHLETICS AND CAMPUS RECREATION

- Senior Women's Administrator
- Compliance, Internal Operations
- Sport Oversight of Men's and Women's Golf, Women's Soccer, Men's and Women's Tennis, Volleyball, and Cheer

ASSISTANT DIRECTOR OF ATHLETICS AND CAMPUS RECREATION

- Director of Fitness and Sports Performance
- Sport Oversight of Baseball, Men's and Women's Cross Country, Men's and Women's Track and Field, Men's Soccer

ASSISTANT DIRECTOR OF ATHLETICS AND CAMPUS RECREATION

- Operations and Facilities
- Sport Oversight of Women's Basketball, Softball

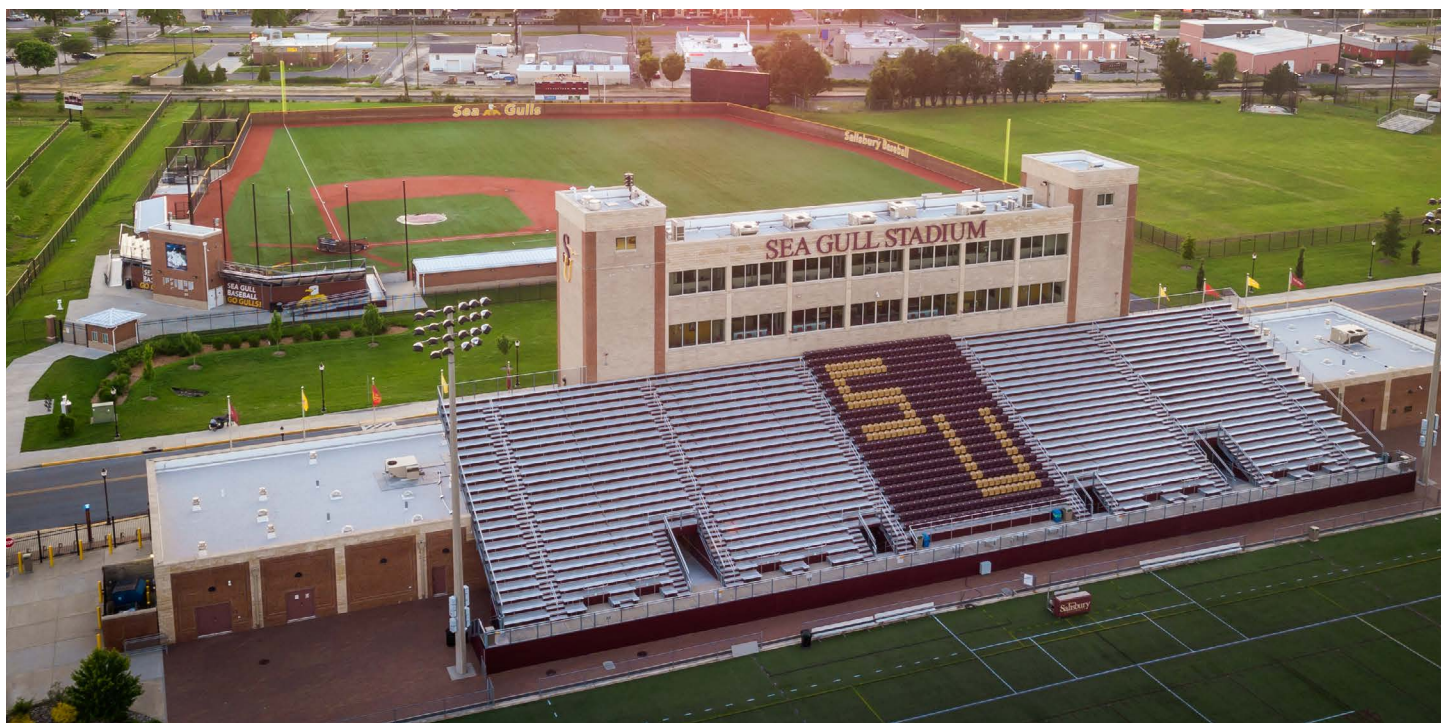
ASSISTANT DIRECTOR OF ATHLETICS

- Communications & Sports Information
- Sport Oversight of Women's Lacrosse, Men's and Women's Swimming

EQUIPMENT SPECIALIST/ DIRECTOR OF EAST CAMPUS FACILITIES

CAMPUS RECREATION

- Aquatics
- Club Sports
- Fitness Programs
- Intramurals
- Indoor/Outdoor Tennis Centers
- University Fitness Center



SALISBURY UNIVERSITY OVERVIEW

Salisbury University sets success in motion. As a student-centered, public regional comprehensive University, SU provides a high-quality undergraduate education, along with excellent graduate and certificate programs. Located on Maryland's Lower Eastern Shore, the friendly campus has a powerful sense of community and "just right size" feel, and our beautiful grounds are a nationally recognized arboretum.

At SU, anyone can "Make Tomorrow Yours." We are known for our:

- Warm and Friendly Environment
- Faculty and Staff Who Open Doors for Students
- Opportunities for Students
- Affordability and Return on Investment

ENROLLMENT

Over 7,200 students attended SU in the 2024-25 academic year, with over 6,400 undergraduate and 700 graduate students.

With a student-to-faculty ratio of 14:1, the University fosters close engagement between students and faculty, and brings together talented students from across campus in collaborative research, professional development, and experiential learning opportunities. Students come from 36 states and 37 foreign countries.

RESOURCES

SU has sound financial footing, with a Fiscal Year 2026 budget of approximately \$227 million. For the 2025-26 academic year, tuition and fees are estimated to be \$11,306 for in-state undergraduate students and \$22,810 for out-of-state.

SU's Business, Economic and Community Outreach Network (BEACON) has estimated the University's regional economic impact at some \$600 million.



COMMUNITY

SU is a campus of more than 1,600 staff and 600 full- and part-time faculty. These dedicated and devoted faculty and staff value a culture of collaboration and shared governance, and a creative and engaged student population that is increasingly comes from various backgrounds.

SU graduates join a growing network of nearly 65,000 alumni worldwide, working for corporations including Amazon, JPMorgan Chase & Co., NASA, Perdue Farms, Under Armour, and the Walt Disney Co., to name just a few. The average salary of recent graduates is \$58,000.

The University houses several centers of excellence, including:

- Charles A. Wight Center for Equity, Justice, & Inclusion
- Institute of Public Affairs & Civic Engagement
- Dave & Patsy Rommel Center for Entrepreneurship
- Business Economic & Community Outreach Network
- Mid-Atlantic Sales & Marketing Institute
- Edward H. Nabb Research Center for Delmarva History & Culture
- Bosserman Center for Conflict Resolution
- Eastern Shore Regional GIS Cooperative
- Eastern Shore Child Care Resource Center

STRATEGIC PLAN GOALS

SU is guided by a [Strategic Plan](#) developed through broad collaboration. The plan reflects analysis and discussion with faculty, staff, students, and other constituents. The five overarching goals are:

1. Enrich Academic Success and Student Development
2. Inspire a Campus Culture of Inclusive Excellence, Support, and Collaboration
3. Support Access, Affordability and Academic Excellence
4. Deepen Engagement with Our Community
5. Enhance Environmental, Social, and, Economic Sustainability

ACADEMICS

The University seeks to provide all of its students rich opportunities, a broad worldview, and a balance of challenge and support to use their talents to shape the future. SU offers 52 bachelor's degrees, and 17 master's and doctoral programs, with several online options. Believing that affordable access to public higher education is essential, the University's highest purpose is to empower students with the knowledge, skills, and core values that contribute to active citizenship and gainful employment in an interdependent world.

SU is home to seven schools and colleges:

- College of Health and Human Services
- Glenda Chatham & Robert G. Clarke Honors College
- Charles R. & Martha N. Fulton School of Liberal Arts
- Richard A. Henson School of Science and Technology
- Franklin P. Perdue School of Business
- Samuel W. & Marilyn C. Seidel School of Education
- Graduate School

RANKINGS & ACCOLADES

- Since 2011, SU students have won more than 100 national and international fellowships, including the National Science Foundation Greater Research Fellowship, Charles B. Rangel Scholarship, Barry M. Goldwater Scholarship, Critical Language Scholarship, David L. Boren Scholarship, and Gates Cambridge Scholarship, including 41 Fulbright Students
- SU is consistently named among the best universities in the U.S. by guides including *U.S. News & World Report*, *The Princeton Review* and *Forbes*.
- *U.S. News & World Report*, *Money*, *Kiplinger's Personal Finance*, *Forbes* and *Washington Monthly* have named SU among the best college values in the nation.
- *U.S. News & World Report* has named SU's M.B.A. and nursing programs among the nation's best online graduate programs.
- SU's Patricia R. Guerrieri Academic Commons has twice been named a "Best College Library" (top 25 in the U.S.) by *The Princeton Review*.
- *The Princeton Review* and *U.S. Green Building Council* have named SU among the nation's top 50 "Green Colleges."
- SU is home to 23 varsity athletics programs, with 23 NCAA Division III team championships and 24 individual national championships.



SALISBURY UNIVERSITY PRESIDENT

DR. CAROLYN RINGER LEPRE

Dr. Carolyn “Lyn” Ringer Lepre became Salisbury University’s 10th president on July 15, 2022. She came to the Delmarva Peninsula from Radford University in Virginia, where she formerly served as interim president.

At Salisbury, she has set goals of increasing enrollment and retention rates; creating a plan to increase the sense of belonging across campus; making SU a top 25 campus in *U.S. News & World Report* rankings; placing a greater emphasis on study abroad and study away programs; creating a facilities plan to attract students and support high-quality educational experiences; restructuring the SU budget to ensure the University’s spending is the most strategic it can be; adding new varsity sports; creating 100 new endowed scholarships as part of fundraising efforts for the University’s 100th anniversary in 2025; and continuing to tell the SU story through its “Make Tomorrow Yours” brand.

Lepre began her academic career as a faculty member at California State University, Chico; the University of Tennessee, Knoxville; and Marist College in Poughkeepsie, NY. During her tenure at Marist, she served as chair of the Department of Communication and director of the college’s Honors Program. In 2013, she was named assistant dean of Marist’s School of Communication and the Arts, advancing to interim dean in 2014 and then dean in 2016.

She joined Radford as provost and vice president for academic affairs in 2020. In that position, she collaborated with the academic leadership team and the student-centered faculty and staff to advance critical initiatives designed to foster the delivery of high-quality academic programs and experiences, and support the University’s strategic plan.

These endeavors included launching the Academic Success Center; launching a distinctive new general education curriculum, which empowers students to be in control of their coursework from day one and provides an individualized path

to degree completion; establishing a stand-alone School of Nursing; establishing a partnership with the Appalachian School of Law that created dual-degree programs; and developing three online fast-track degree programs (R.N.-to-B.S.N., M.B.A., and M.S.N.).

In addition to her academic work, Lepre has extensive professional experience in the communication industry, having worked for various national publications and media outlets. Her research has focused on media representation of gender and diversity, health communication and mass communication education, and she has published more than 40 book chapters, refereed journal and conference articles. She also is the co-author of *U.S. Media and Diversity* (Wiley-Blackwell), now in its third edition.

Lepre earned her B.A. in English and journalism at Miami University (OH), her M.S. in journalism from Ohio University and, her Ph.D. in mass communication from the University of Florida.



PRESIDENT’S CABINET

- Provost and Senior Vice President for Academic Affairs
 - Associate Provost and Acting Vice President of Academic Affairs
- Vice President of Administration and Finance
- Vice President of Student Affairs
- Vice President of Advancement and Alumni Engagement and Executive Director, SU Foundation, Inc.
- Vice President of Inclusion, Access, and Belonging
- Chief of Staff and Vice President of Public Affairs, and Strategic Initiatives
- General Counsel

THE SALISBURY SEVEN

During SU President Carolyn Ringer Lepre’s inaugural State of the University Address she outlined the pursuit of specific goals and initiatives aligned with seven priorities – the Salisbury Seven:

1. We will invest in the people who deliver on our promises to students
2. We will provide a rigorous, student-centered academic program led by world-class educators on a world-class campus
3. We will maintain a continual commitment to access, opportunity, equity, and foster a strong sense of belonging
4. We will pursue strategic growth to meet the needs of the Eastern Shore, Maryland, and the nation, while staying true to our identity as a student-focused institution
5. We will be recognized for innovative, high-impact practices and for educating the whole student for a lifetime of leadership and service
6. We will secure resources to support SU programs, students, and culture
7. We will strengthen our institutional identity and reputation

SALISBURY, MARYLAND

Perfectly located between Atlantic Ocean beaches and the Chesapeake Bay, the City of Salisbury is the largest city on the Eastern Shore of Maryland and the economic and cultural hub of the Delmarva Peninsula. *U.S. News & World Report* has rated Salisbury among the nation's top 20 Fastest Growing Cities and Safest Places to Live, and in the top 100 Best Places to Live. Realtor.com has called Salisbury the No. 1 Best College Town for Families.

SU boasts a strong relationship with the city and its leaders, and contributes to an engaged community fostering an exciting downtown revitalization. The city is home to an arts and entertainment district, the Salisbury Zoo, and City Park, and is surrounded by a region known for its charming small towns and refreshing outdoor activities. The city and campus are close to Ocean City, MD, and two hours from the metropolitan areas of Washington, Baltimore and Philadelphia.





Salisbury
UNIVERSITY

Make Tomorrow Yours

.....
Go to salisbury.edu



Salisbury University is a proud member of the University System of Maryland.

Salisbury University is an equal educational and employment opportunity institution.

