

# EMERGENCY INFORMATION

## FIRE EMERGENCY

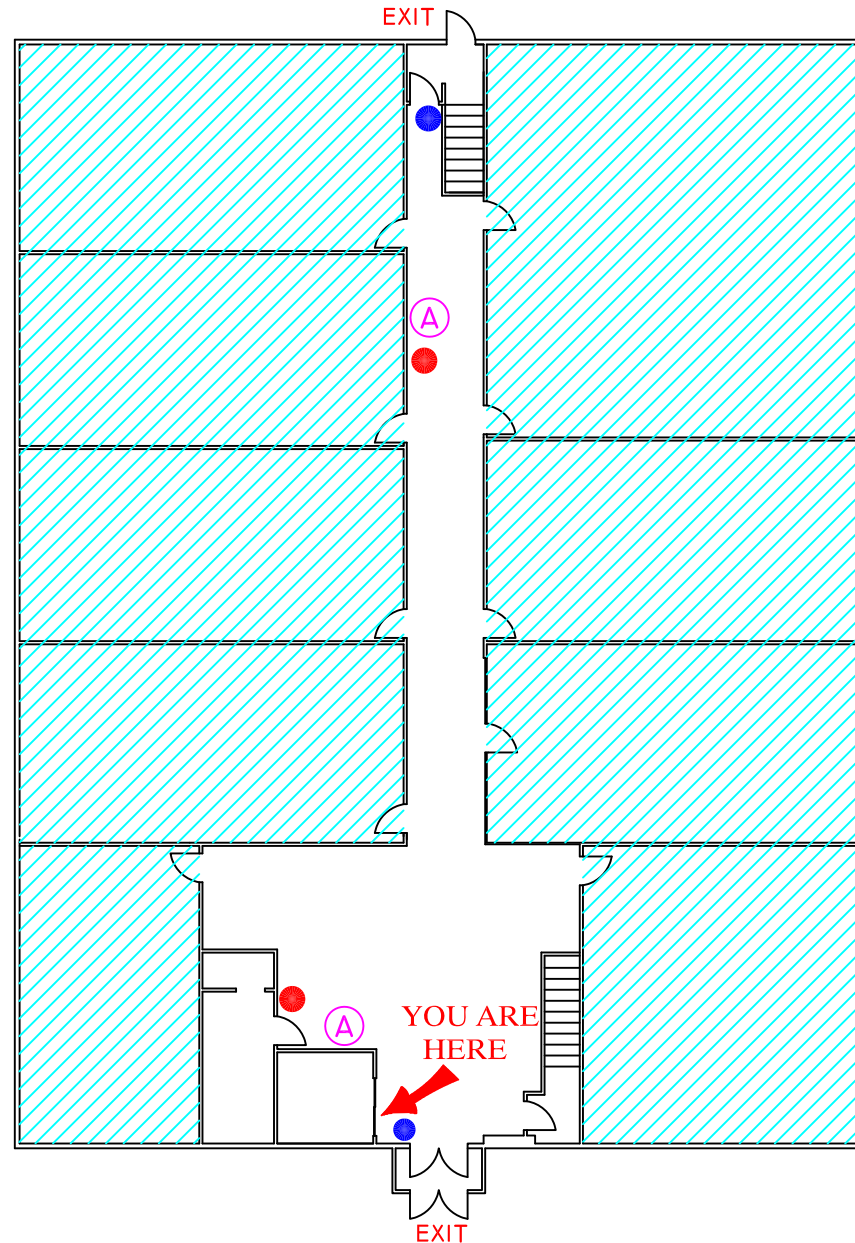
WHEN ALARM SOUNDS, TURN OFF POTENTIALLY HAZARDOUS ELECTRICAL EQUIPMENT, AND WALK TO THE NEAREST EXIT. INDIVIDUALS IN WHEELCHAIRS ON THE SECOND FLOOR SHOULD REMAIN WITHIN THE FIRE EXIT STAIRWELL UNTIL FIREFIGHTERS ARRIVE TO ASSIST THEM. DO NOT USE ELEVATORS DURING A FIRE EVACUATION. MOVE TO THE EVACUATION ASSEMBLY AREA AND REMAIN THERE UNTIL NOTIFIED "ALL CLEAR". PLEASE REMEMBER THAT YOU MIGHT NOT BE ABLE TO RE-ENTER THE BUILDING.





## SEVERE WEATHER

WHEN NOTIFIED OF SEVERE WEATHER, SEEK SHELTER ON THE LOWEST BUILDING LEVEL IN AREAS WITHOUT GLASS. THESE AREAS ARE ILLUSTRATED WITH BLUE LINES. REMAIN THERE UNTIL NOTIFIED "ALL CLEAR" BY CAMPUS POLICE, A BUILDING MANAGER, OR THE LOCAL WEATHER STATION. DO NOT GO OUTDOORS UNTIL THE WEATHER EVENT HAS SUBSIDED.

## MEDICAL EMERGENCY

IF A MEDICAL EMERGENCY OCCURS, CALL 911 AND PROVIDE AS MUCH INFORMATION AS POSSIBLE TO THE OPERATOR. STAY ON THE LINE UNTIL THE OPERATOR INDICATES YOU MAY HANG UP. THE 911 OPERATOR WILL CALL UNIVERSITY POLICE AND INFORM THEM OF THE EMERGENCY.



LEGEND	
	FIRE EXTINGUISHER
	PULL STATION
	A.E.D. (AUTOMATED ELECTRONIC DEFIBRILLATOR)
	SHELTER IN PLACE

  
EVACUATION  
ASSEMBLY  
AREA

UNIVERSITY FITNESS - SALISBURY UNIVERSITY