


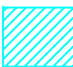
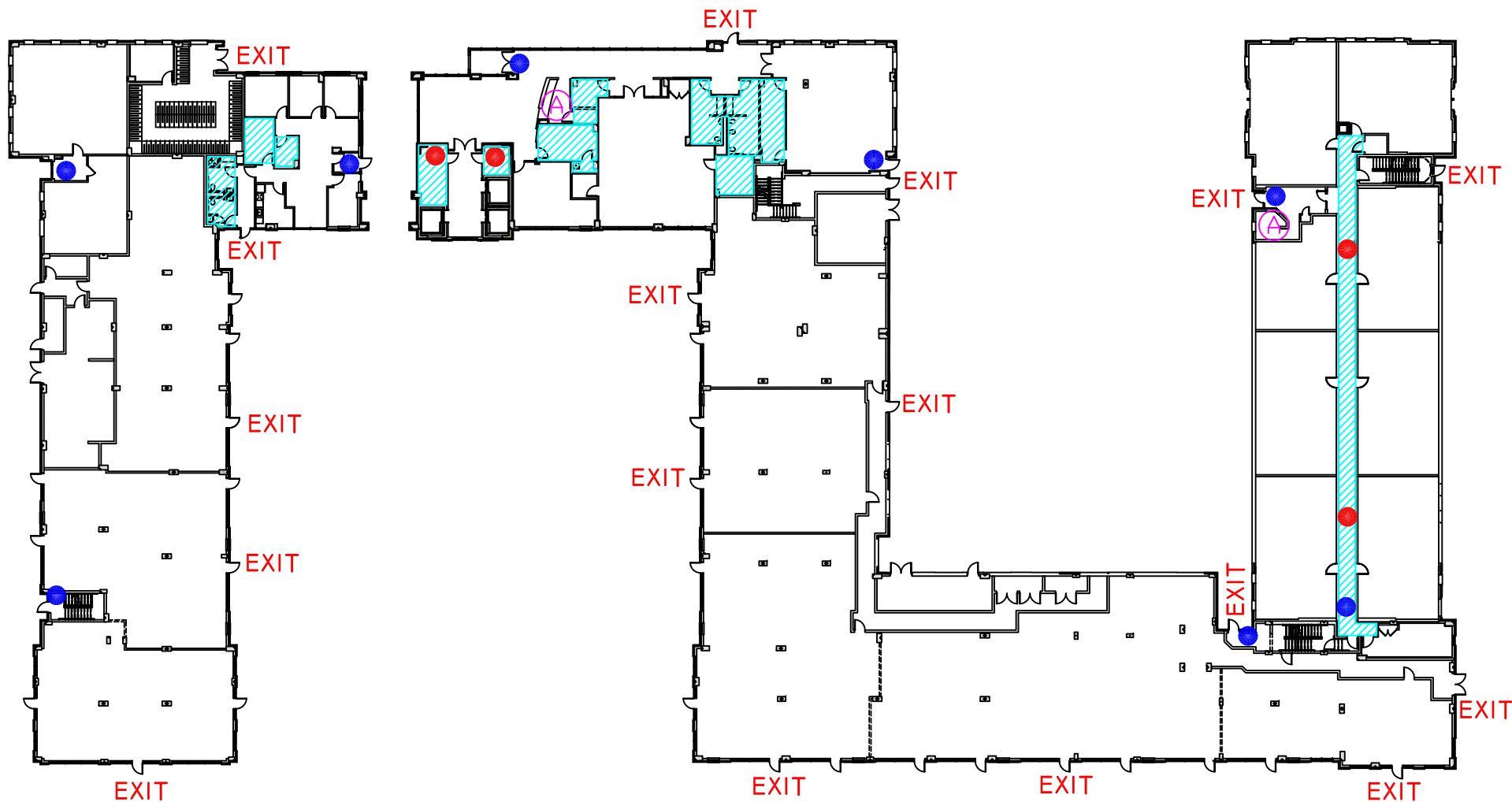


EMERGENCY INFORMATION

LEGEND	
	FIRE EXTINGUISHER
	PULL STATION
	A.E.D. (AUTOMATED ELECTRONIC DEFIBRILLATOR)
	SHELTER IN PLACE



FIRE EMERGENCY

WHEN ALARM SOUNDS, TURN OFF ANY POTENTIALLY HAZARDOUS ELECTRICAL EQUIPMENT, CLOSE THE DOOR AND WALK TO THE NEAREST EXIT. PROCEED TO THE DESIGNATED CHECK-IN SPOT OUTSIDE THE BUILDING. A RESIDENT ASSISTANT (RA) WILL BE WEARING A SAFETY VEST, HAVE A FLASHLIGHT AND A RESIDENT ROSTER. REPORT TO THE RA AS SOON AS POSSIBLE AND REMAIN IN THE CHECK-IN SPOT UNTIL YOU ARE NOTIFIED CONDITIONS ARE "ALL CLEAR".

SEVERE WEATHER

WHEN NOTIFIED OF SEVERE WEATHER, SEEK SHELTER IN AREAS WITHOUT GLASS. IN PUBLIC ACCESS AREAS THESE ARE ILLUSTRATED WITH BLUE LINES. REMAIN THERE UNTIL NOTIFIED "ALL CLEAR" BY CAMPUS POLICE OR A BUILDING MANAGER. DO NOT GO OUTDOORS UNTIL THE WEATHER EVENT HAS SUBSIDED.

MEDICAL EMERGENCY

IF A MEDICAL EMERGENCY OCCURS, CALL 911 AND PROVIDE AS MUCH INFORMATION AS POSSIBLE TO THE OPERATOR. STAY ON THE LINE UNTIL THE OPERATOR INDICATES YOU MAY HANG UP. THE 911 OPERATOR WILL CALL UNIVERSITY POLICE AND INFORM THEM OF THE EMERGENCY.

SEA GULL SQUARE - SALISBURY UNIVERSITY