

## Fall 2021 Newsletter

### **Fall 2021 Newsletter Contents**

[Announcing New SSW Faculty & Staff Appointments and Promotions](#)

[Director of the MD Governor's Office of the Deaf and Hard of Hearing Visits SU](#)

[Jillian Amodio speaks at MD Community Action Partnership Virtual Human Services Conference](#)

[Faculty and Students attend the CSWE Conference in Orlando](#)

[Read about Our Students in Their Field Experience](#)

[NASW-MD Biennial Student Conference](#)

#### *Organizations & Clubs:*

[Phi Alpha Honor Society Fall Inductees](#)

[Asian Student Social Workers \(ASSW\)](#)

[Nia Mentoring Initiative](#)

[School of Social Work Alumni Network](#)

#### *Upcoming SSW Events:*

- [Phi Alpha Induction - Friday, December 10<sup>th</sup> 2pm](#)
- [Virtual Graduation Celebration - Saturday, December 11<sup>th</sup> 10am](#)
- [Field Office Spring Internship and Career Fair – February 22<sup>nd</sup> 4-6pm](#)

***Follow us on Social Media!***



#susocialwork

<https://www.salisbury.edu/socialwork>

# Announcing New SSW Faculty & Staff Appointments and Promotions

**Salisbury**  
UNIVERSITY

SCHOOL OF SOCIAL WORK



The School of Social Work  
welcomes Dr. Becky Anthony  
as BASW Program Chair!

Dr. Becky Anthony (She/Her) is an Associate Professor and current BASW program chair in the School of Social Work at Salisbury University. She teaches courses within both the BASW and MSW programs focused on privilege and oppression, human sexuality, and multiple courses focused on social work practice. Her social work practice and research are focused on three areas: social justice, human sexuality, and technology.

**Salisbury**  
UNIVERSITY

SCHOOL OF SOCIAL WORK



The School of Social Work  
welcomes Heather Diehl  
as MSW Program Chair!

Heather Diehl is a Clinical Assistant Professor in the School of Social Work. Her clinical social work training is in hospice and end-of-life care. Heather is a military spouse, and volunteers as a professional mentor to military spouses re-entering the workforce. Her research interests are around the challenges of dual careers in military-connected households.

**Salisbury**  
UNIVERSITY

SCHOOL OF SOCIAL WORK



The School of Social Work  
welcomes Melissa Lynn  
as Administrative Assistant!

My name is Melissa Lynn and I just accepted the Administrative Assistant II position. I moved here from South Bend, Indiana and have 7 years of higher education experience.

**Salisbury**  
UNIVERSITY

SCHOOL OF SOCIAL WORK



The School of Social Work  
welcomes Dr. Bibiana Koh  
as Associate Professor!

Bibiana D. Koh, PhD, LICSW (MN) received her PhD in Family Social Science at the University of Minnesota, and her MSW at Smith College School for Social Work. Dr. Koh was previously at Augsburg University in Minneapolis, MN for nine years where she was appointed by the university as the Batalden Scholar in Applied Ethics (2018-2021).

**Salisbury**  
UNIVERSITY

SCHOOL OF SOCIAL WORK



The School of Social Work  
welcomes Dan Green  
as Assistant Professor!

Dan Green is an assistant professor and clinical social worker here at Salisbury University School of Social Work. His work primarily focuses on understanding the role of social stigma on access and use of healthcare services. Dan enjoys and takes immense responsibility in teaching and mentoring future social workers as they become leading advocates and clinicians dedicated to social justice.

**Salisbury**  
UNIVERSITY

SCHOOL OF SOCIAL WORK



The School of Social Work  
welcomes Stephen Oby  
as Assistant Professor!

Stephen is a practicing social worker with 15 years of experience in the helping professions, primarily serving children and families. He completed his PhD at the University at Albany in New York State this spring and is thrilled to be joining Salisbury University's School of Social Work starting in the fall semester.

**Salisbury**  
UNIVERSITY

SCHOOL OF SOCIAL WORK



The School of Social Work  
welcomes Alexis Broom  
as Graduate Assistant!

I am in my last year of the MSW program at SU and am married to my husband, Andy and a dog mom to our pup, Remi! I enjoy traveling, Spanish tapas, and am semi-fluent in American Sign Language.

**Salisbury**  
UNIVERSITY

SCHOOL OF SOCIAL WORK



The School of Social Work  
welcomes Allison Lewis  
as Graduate Assistant!

Allison is a Salisbury University MSW Student.  
See the light in each other & be the light for each other.

**Salisbury**  
UNIVERSITY

SCHOOL OF SOCIAL WORK



The School of Social Work  
welcomes Lilly Walton  
as Graduate Assistant!

I graduated from Towson in spring '20 and spent a year as a Case Manager for youth with a mental health diagnosis. I'm so excited for this new chapter at the School of Social Work as a GA this fall!

**Salisbury**  
UNIVERSITY

SCHOOL OF SOCIAL WORK



The School of Social Work  
welcomes Ryan Messatzzia  
as SUDWE Program Manager!

Dr. Ryan Messatzzia has been hired as the Project Director for the Substance Use Disorder Workforce Expansion (SUDWE) grant. He has 20 years of experience in substance use disorder treatment and education and has worked as an adjunct with the Social Work Department since Fall 2012.

**Salisbury**  
UNIVERSITY

SCHOOL OF SOCIAL WORK



The School of Social Work  
welcomes Carrie Bailey  
as Title IV-E Coordinator and Trainer!

Carrie Bailey is a Licensed Clinical Social Worker She currently provides mental health therapy to individuals in Maryland and Delaware. She previously worked in child welfare for the Cecil County Department of Social Services for 15 years as a worker and then a supervisor for In-Home programs.

Carrie received her undergraduate degree in Family Studies from Towson University in 2005. She is a former Title IV-E student and received her MSW from Salisbury University in 2012.

Carrie lives in Chesapeake City, MD with her husband and three sons, ages 4, 6, and 7.

## Director of the MD Governor's Office of the Deaf and Hard of Hearing Visits SU

Kelby Brick, the Director of the Maryland Governor's Office of The Deaf and Hard of Hearing came to Salisbury University for a day long visit on September 30, 2021. Dr. Ellen Schaefer-Salins, the advisor to the Deaf Studies Minor, showed him around the university. He learned about the Deaf Studies Minor through the professors that teach American Sign Language (ASL) and the courses on deaf culture, deaf history, and services for the deaf and hard of hearing. These professors include Ellen Schaefer-Salins, Jonathan Blackmon, Eddy Morrison, and Laura Dreany-Pyles. He also met with top administrators at SU including Provost Karen Olmstead, Dean Kelly Fiala of CHHS, and Dean Maarten Pereboom of the Fulton School. The Director of the School of Social Work, Jennifer Jewell, and the Chair of the Department of Modern Language and Intercultural Studies, Corinne Pubill, the two programs that sponsor the minor, also met with Director Brick. And he was very excited to meet and use ASL with the students in the Deaf Studies Minor.

In the evening Director Brick convened a Town Hall for the Deaf Community on the Eastern Shore. He spoke about important issues such as the need for more accessible medical services for deaf people and the need for more qualified ASL interpreters locally. Approximately 60 people attended in person and over Zoom and asked questions to Director Brick about issues impacting people who are deaf and hard of hearing.

It was a very good day where Director Brick learned about Salisbury University and the Deaf Studies Minor, students, faculty, and administrators learned more about deaf culture and the needs of the deaf community on the Eastern Shore.

*Submitted by Dr. Ellen Schaefer-Salins*



Kelby Brick is pictured above with Deaf Studies Minor Students and pictured right with Dr. Ellen Schaefer-Salins (on the right) of the School of Social Work.



Jillian Amodio speaks at MD Community Action Partnership  
Virtual Human Services Conference



Jillian Amodio, BASW Student

*Eastern Shore Higher Education Center*

I had the pleasure of speaking at the Maryland Community Action Partnership Virtual Human Services Conference on October 12th. My presentation titled Supporting the LGBTQ Community by Addressing Implicit Bias in Service Delivery was designed to raise awareness about implicit bias and how it causes inequitable care and service for the LGBTQ community. I also addressed ways to combat the effects of implicit bias and to ensure a more diverse, accepting, and well-informed approach to service.

This session provided a deeper understanding of what implicit bias means and how it affects service delivery for the LGBTQ population. We explored what implicit bias means, how it might be displayed, and the consequences it may bring to members of the LGBTQ community who are receiving services. We looked at ways to overcome and address implicit bias personally and in a broader organizational sense. We addressed some of the barriers and common issues that this population may contend with. We gained clarity on concepts such as pronoun use, gender neutral or more diverse forms, common terminology, the gender continuum, and best practices that can enhance service to this population. We looked at case studies, statistics, and analyzed individual practices to see areas of strength and weakness.

*Submitted by Jillian Amodio*

## Faculty and Students attend the CSWE Conference



School of Social Work faculty and students visited Orlando for the Annual Program Meeting of the Council on Social Work Education.

Our presenters included:

- Dr. Stephen Oby
- Dr. Ellen Schaefer-Salins
- Dr. Mary Hylton
- Dr. Amanda Hill
- Dr. Kim van Vulpen
- Dr. Jennifer Jewell
- Dr. Becky Anthony
- Ms. Anita Monyei

Also in attendance were Kathleen Arban, Jessie West, Tina Diamonte-Mock and CUSP students Jazmine Brown and Jasmine Lloyd.

*Go Team!*



COUNCIL ON SOCIAL WORK EDUCATION

MSW online student, Anita Monyei (pictured right) completed a research study focusing on the needs of parents/caregivers of children with Reactive Attachment Disorder (RAD). The study aimed to understand the diverse needs around emotions, social support, and resources for parents/guardians. On November 6, 2021 Anita was able to present the findings of her research study at the CSWE conference in Orlando, Florida. The E-poster presentation was available to anyone attending CSWE.

Anita was able to attend an opportune conference networking with knowledgeable instructors, practitioners, and professors in the field of Social Work. During her semesters at SU, part of her field study found her working with Dr. van Vulpen, who nurtured and cultivated Anita's love for research. This led Anita to pursue an opportunity to speak to a wider audience on her research study on the vital misunderstanding of RAD from the perspective of a caregiver.

SU was able to find grants to support Anita in attending the CSWE in Florida, where she got an opportunity to meet the SU Director of Social Work and other remarkable Social Work professors from SU, who were presenting their body of work at the conference as well. Anita stated that "attending CSWE was a great opportunity to network with social workers from all over the United States and to learn about new research findings in the field of social work." It was an experience Anita will cherish as she continues her research towards improving the field of social work.



COUNCIL ON SOCIAL WORK EDUCATION



Students in Field Placement this fall in the Social Work 420/640 Seminar Class are gaining a variety of experiences to enhance their learning. Students have placements in the Tri-State area ranging from case management activities with developmentally disabled individuals, to assisting clients dealing with domestic violence, assisting people prepare for employment and independent living, and helping vulnerable families with children who live in high-risk neighborhoods. Agencies such as Bester Community of Hope, Frederick County Public Schools, Eastern Panhandle Empowerment Center, Optimal Health Care, Potomac Case Management and ARC of Washington County have paired students with Field Supervisors who closely work with students to develop the Core Competencies social workers need to help people learn how to take better care of each other.

Students have described many eye-opening learning experiences, some of which they and their supervisors planned through the creation of their Learning Contracts, and some of which have occurred spontaneously as the result of providing care to the people we serve. One student has already been inspired to explore more macro systemic approaches in policies affecting her clients, while another has offered constructive suggestions for improvements to residential services provided to her clients. Another student has built rapport, trust and understanding with his clients through weekly group activities, while another has collaborated with her clients and community partners to explore enhanced services for Spanish-speaking clients and prepare to open a new school program next year.

As the students participate in this very practical "hands-on" learning approach, they are demonstrating their excitement at what it feels like to engage in helping work with people, while learning to internalize the professional values of the NASW Code of Ethics, and the Council on Social Work Education's Core Competencies. Students have described both the thrill and heart-breaking challenges that professional helpers face daily, and with good support from their Field Supervisors and Salisbury University staff are learning how to be professional helpers, so that their clients can develop their own capacities and strengths in order to create healthier happier communities.

*Submitted by Eddie Van Metre  
Field Liaison*



Debbie Aperance (pictured above), a BASW SU Social Work Intern, prepares her riders for instruction in horseback riding. As they summon up their bravery for an adventure, each rider responds to the peaceful nature of his or her horse and the calming environment at the farm. At 4STEPS our staff and horses work to enhance the lives of children and adults with physical, emotional, and behavioral challenges by providing therapeutic horseback riding and equine assisted activities.

*Submitted by Sandra Winter  
Field Supervisor at 4STEPS Therapeutic Riding Center*



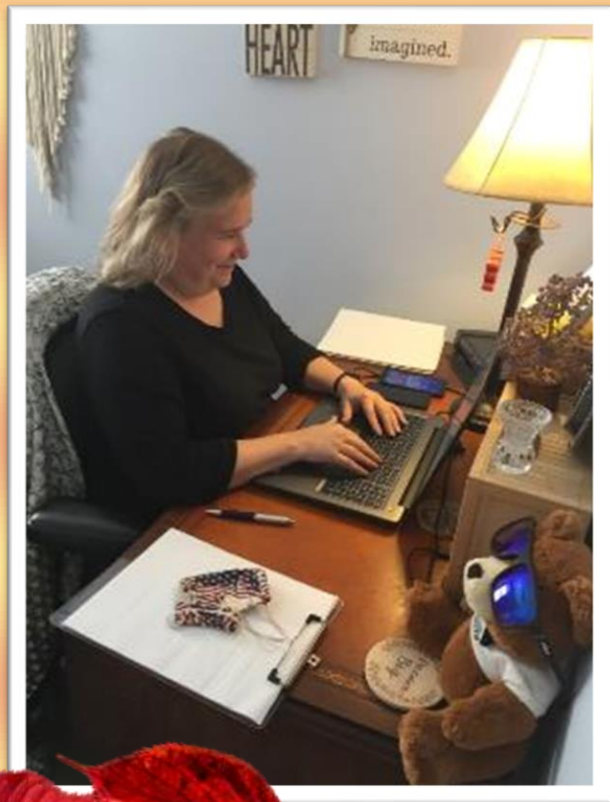
My current internship is at University of Maryland Capital Region Health. I am in the population health department and focus on providing resources to patients in order to decrease their chances of readmission into the hospital. This is primarily through conducting needs assessments and connecting patients with community organizations to assist in whatever their needs may be such as food, transportation, paying for prescriptions or ensuring the patient has a primary care doctor. Another part of my internship is conducting post discharge follow up calls to ensure the patient is adjusting well back at home and following all post discharge instructions.

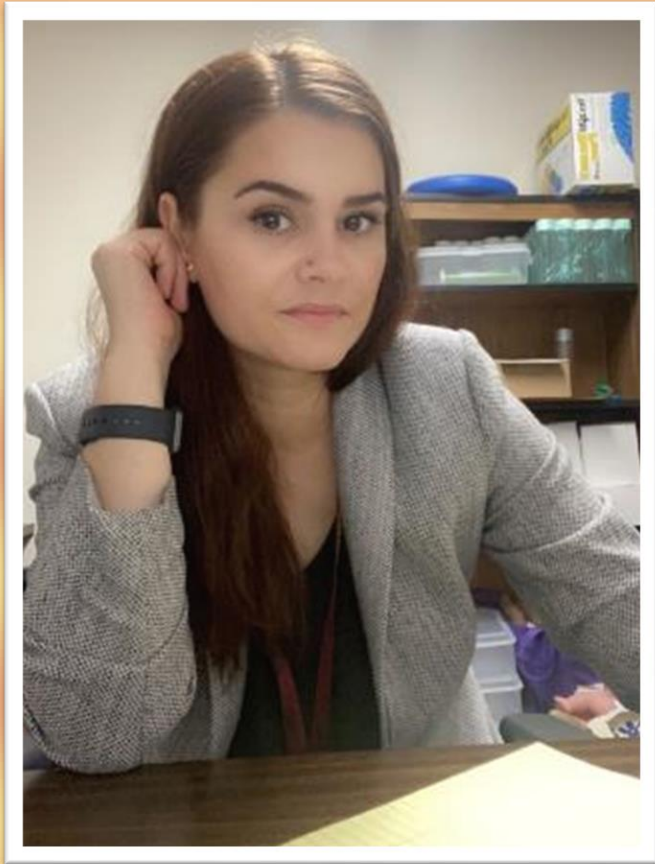
The staff that I work with have been amazing. They are incredibly welcoming and are always available for mentorship and assistance. My supervisor makes an effort to ensure that during my internship, I get a realistic experience. I find myself incredibly lucky to have been placed at this organization.

*Submitted by Charlotte Floyd (pictured left)  
MSW Generalist Student*

I have had the pleasure of supervising Ms. Nikki Smith (pictured right), as she works towards her Masters in Social Work from Salisbury University. I have supervised Social Work students previously and the common denominator is their lack of confidence in their innate skills to communicate and engage clients in therapy. Although Nikki is no exception to this pattern, she has continued to grow as a Clinician and as a Social Worker in the few short months she has been with us. She is currently providing individual therapy to four (4) ongoing clients and will increase her caseload as appropriate. She is also prepared an outline for a group which will start in January, assisting clients in this "Post Covid" world. This is something we are very excited about here at Journeys Holistic Therapy Group!

*Submitted by June Becker  
Field Supervisor at Journeys Holistic Therapy Group*





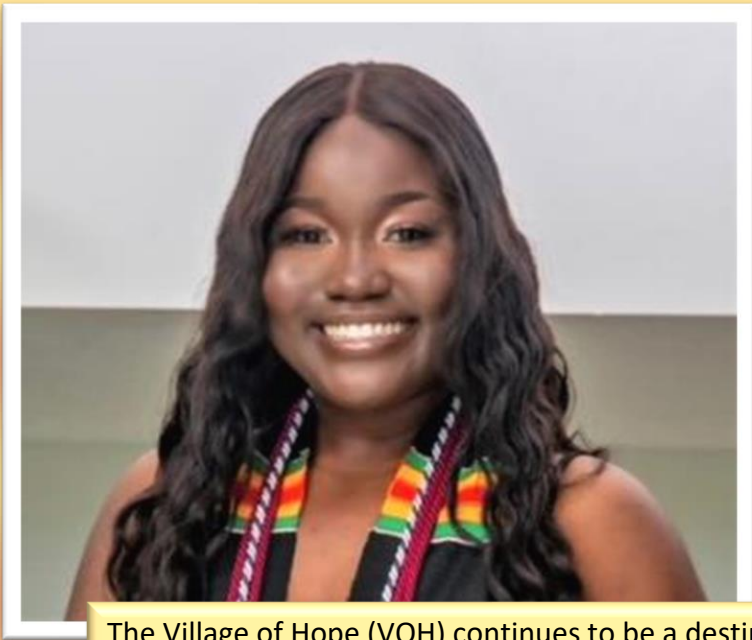
Learning is characterized by taking on new skills and information, which is then infused with the existing knowledge to achieve functionality. Knowledge, skills and information are acquired procedurally through learning experiences. Being able to be in the process of learning diverse skills and listen to advice will benefit me to gain knowledge during my internship period as well into my future career. I believe that the ability to look beyond personal attributes to ensure quality delivery will be a vital skill in my future career in social work. The internship will be an excellent opportunity to learn, interact with different people and cultures, and experience the work environment. I will not only gain invaluable people skills but also increase my technical knowledge and comprehension of the work environment.

This year I am interning at Lower Shore Mental Health Consultation Program, a great opportunity to improve my skills as a Social Worker and to experience childhood consultation. Our agency is providing services such as:

- Conduct on-site observations at childcare centers and schools
- Develop a plan with strategies to support the child in the classroom, while aiming to reduce challenges associated with behavior, regulation, attachment, and initiative
- Support early childhood professionals, parents, and caregivers with information and education to navigate perceived challenges
- Make referrals to services including, but not limited to OT, Speech, PT, Diagnostic Testing

The internship will be an excellent opportunity to learn, interact with different people and cultures, and experience the work environment. I will not only gain invaluable people skills but also increase my technical knowledge and comprehension of the work environment.

*Submitted by Cristina Mahmood (pictured left)  
MSW Specialized Practice Student*



The Village of Hope (VOH) continues to be a destination site for interns studying social work and other disciplines.

Two interns studying social work at Salisbury University (SU) are working with our Lead Case Manager, Ms. Romanda Hutt, and Case Manager, Ms. Paula Beachley, to gain practical experience in a human/social services organization. Both will assist staff and work with our Steps to Success participants until May 2022. Hillary Agyemang (pictured above), who is pursuing a Masters of Social Work degree will graduate Fall 2022; Kayla Cox (pictured below) is enrolled as a student in the Bachelor of Social Work program at SU.

As always, the VOH staff welcome and appreciate all of the assistance and support our interns provide during their time with us and the collaborative relationship we maintain with their professors and advisors.

*Submitted by Romanda Hutt  
Field Supervisor at Village of Hope*





My intern's name is Stefanie Cullum (pictured left). She is a bachelor's level social work student at Salisbury. She is interning at Brunswick High and Middle school this year as a CASS worker (Community Agency School Services Coordinator). She has dived into the role by supporting me in all mental health awareness initiatives to include sharing resources with students at lunch shifts on suicide awareness/crisis resources, bullying prevention and assisting in our Unity/Kindness Day events. She also assists in leading our mindfulness club at BHS and researching resources in the community for needy families. She took on the holiday assistance project this year and shares available resources for this year with our entire team and neediest families.



Stefanie has also begun to take on some cases, starting the initial referral process, connecting with families and helping to link them to appropriate resources such as therapy, financial assistance, food banks, clothing drives etc. She has created a monthly parent newsletter to share with families in our community as well. In addition to all this, she is learning how to facilitate and lead social/emotional groups at both middle and high school levels. We are very thankful to have her on board as a railroader and appreciate all her help!

*Submitted by Lysie Romanek*

*Field Supervisor at Brunswick High & Brunswick Middle School*

James M. Bennett High School interns Paxton Thomas, master's level, and Ashley Palestis, bachelor's level, (both pictured right) have been educating students about various topics as the school year starts. During September the duo created and provided educational awareness to our high school students regarding substance abuse and Wicomico County's Go Purple Movement. Most recently they provided information on Anti-Bullying in accordance with the school's Social Emotional Learning Curriculum.

*Submitted by Laura Bradford*

*Field Supervisor James M. Bennett High School*





As of October 10, 2021, Mark Lee has completed the first 45-hours of classroom training as part of the Basic Mediation Training conducted by Community Mediation Maryland. The full training consists of: 45 hours of initial classroom training (completed); Observation of two mediations (completed); Co-mediation of two mediations (scheduling); A personal evaluation/strategy session (after 2 co-mediations); and five-hours of follow-up training (in November).

Mark is also actively participating in creating a Peace Order Mediation Program partnership with Cecil County District Court. He currently attends court on Tuesday mornings to learn about Peace Orders and help determine how CCCMC can support community members and resolve conflicts associated with Peace Orders. He is also researching Peace Orders on the MD Judiciary website.

A group photo of Mark's Basic Mediation Training class is shown left. Mark is 2nd from left in the back row.

*Submitted by Kathy Glace  
Field Supervisor at Cecil County Community  
Mediation Center*

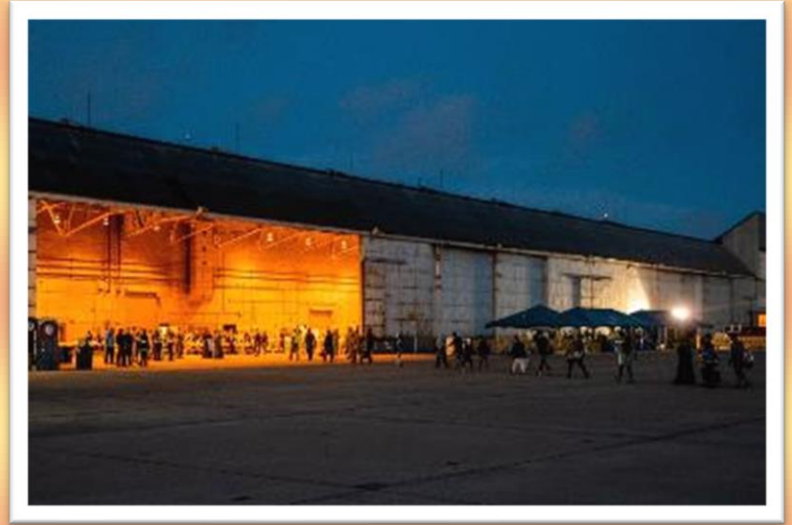
In the Substance Use Disorder Clinical Care (SUDCC) within the Embedded Behavioral Health Clinic, we provide outpatient substance use disorder and other behavioral health care. Our services include assessments, treatments, and aftercare, for service members and other beneficiaries within an integrated medical and behavioral health model to enhance health and readiness. Our providers utilize national best practices to optimize care delivery, treatment outcomes, and force conservation for service members and other beneficiaries.

In SUDCC, I work alongside the Army Substance Abuse Program (ASAP) and Directorate of Emergency Services (DES) to collect and review Serious Incident Reports (SIR) and Military Desk Blotters on substance use related incidents which will ensure we provide immediate services to our community members who may suffer from a substance use disorder. Also, I schedule patient's appointments, conduct initial substance use and behavioral health assessments, update SUDCC case tracker, manage the scheduling for Prime for Life course, and discuss cases with providers.

The people in my field placement, fellow students, faculty and staff, and external field supervisor have been very supportive and continue to encourage me throughout the social work program, which is a wonderful feeling.

*Submitted by Antwan Robinson (pictured right)  
MSW Specialized Practice Student*





Tom Jennings (pictured above left, center) is placed with the American Red Cross in Rota, Spain. Tom's most recent work has been a little bit outside the norm. The Rota Naval Station took in over 2600 Afghan refugees. The American Red Cross was heavily involved in that operation, with all of our staff and volunteers committed to the evacuation. We had teams at the flight line round the clock, while more teams helped feed the Afghans. The attached photo is from one of many meal shifts that Tom worked. The evening photo is Afghans arriving at our terminal.

*Submitted by Paul Butler  
Field Supervisor at American Red Cross*

Grassroots Crisis Intervention Center is thrilled to have David Foster (pictured right) join our team as a social work intern this year. David's primary role is as the Site Coordinator at our Day Resource Center, which allows them to develop many different social work skills throughout their working hours. The Day Center is open to the community and the bulk of guests are people experiencing homelessness or housing instability. We provide a food pantry, clothing pantry, computer access, laundry, showers, a medical clinic, a library, mail pick-up, space for socialization, and onsite case management. David works directly with clients to help them access resources at the Day Center and provides case management for those experiencing housing crises, such as pending evictions and being temporarily displaced from housing. David also provides support to the Day Center volunteers, assisting with scheduling, training for their roles, and onsite assistance during their shifts.



*Submitted by Tina Field*

*Field Supervisor at Grassroots Crisis Intervention Center*



I am currently placed at Lighthouse Counseling Christian Ministry in Berlin MD. This is an employment-based internship. Here I work with all ages on individual therapy and group therapy as well. At Lighthouse I can connect with clients and build my own client base. It has been an amazing opportunity to help others with mental health and addiction related issues. I have been able to expand my knowledge on working with clients in a private practice and how to best serve my community.

*Submitted by Brittany Evans (pictured left)*

*BASW Student*



I am pleased to say that it has been a pleasure to have Brittany Evans as an intern. Brittany brings to the table a strong personality and performance record in the clinical setting. Brittany is currently carrying a caseload of 6 with a goal to reach 10 by the end of the semester. She uses her creativity to lead activities with individuals and groups. Brittany has had the opportunity to see diversified population groups with diverse spiritual beliefs. She has demonstrated knowledge of basic social work skills and models the principles of NASW when she is with her clients. Brittany is balancing dual roles in our clinical setting. She is responsible for the individual client sessions as well as tasks she performs in the daily operations of the clinic. Britany has been an asset to Lighthouse Christian Counseling, and I look forward to more amazing talents from her as she grows in her career.

*Submitted by Debbie Remines*

*Field Supervisor at Lighthouse Counseling Christian Ministry*



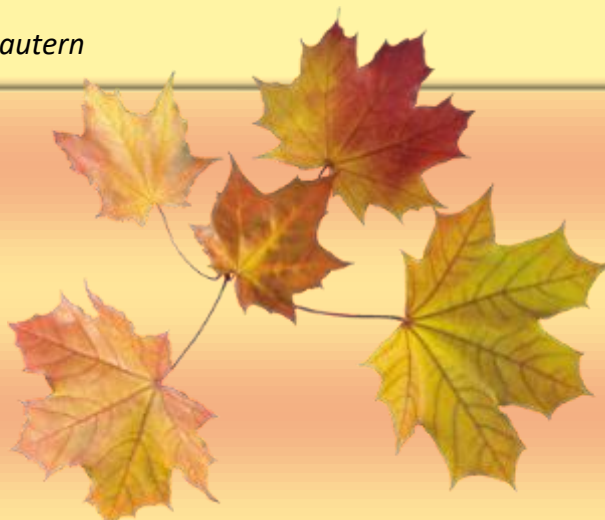
Cole Rollins (pictured above) has been with the USO for five months. Prior to his internship, Cole volunteered at the Deployment Processing Center (DPC) to learn the processes and procedures for assisting military members. He dove into every hands-on aspect of providing morale, food, drink, and self-care items to military members. This enhanced his knowledge of the Deployment Processing Center and its mission.

Upon starting the position, Cole kept busy with operations at the DPC. These operations drastically ramped up during the last week of August when Operation Allies Refuge began and the military support requirements at the DPC skyrocketed. Cole was an outstanding member of the team during this time. The USO turned into a rest area for hundreds of soldiers, US and German, along with interpreters, maintenance workers and bus drivers.

Cole maintains a focus on military members and takes it upon himself to serve them with snacks and beverages, and assists them with other needs as they arise. Cole has come out of his comfort zone many times and has been a valued member at the DPC on the Rhine Ordinance Barracks.

*Submitted by Patrick Keena*

*Field Supervisor at USO Kaiserslautern*





The Lower Shore Early Childhood Mental Health Consultation (ECMHC) Program has welcomed 3 interns Sean Bellgowan, Chloe Birch and Cristina Mahmood (pictured above) to the agency. The interns have already hit the ground running conducting observations in various childcare settings and working to develop techniques and strategies to support the early childhood population.

Our program conducts classroom observations of children (birth - 5) to get a glimpse of how they interact in the environment with their teachers, peers, how they navigate transitions and other occurrences throughout the day.

Recommendations are made to teachers, parents/caregivers on how to support the overall social, emotional development of the child in the areas of self-regulation, behavior concerns, attachment and initiative. We provide referral information for services such as PT, OT, Speech Language (SLP) and further diagnostic testing.

As our agency name encompasses the term mental health these are things we DO NOT do:

- Assess or diagnose children for mental health disorders
- Provide direct or 1:1 services to children in the classroom
- Provide therapeutic services (Physical Therapy, Speech Language, Occupational, Play/Expressive, Individual or Family therapy or counseling)
- Conduct testing for Autism Spectrum or Developmental Delays

*Submitted by Janelle Parker*

*Field Supervisor at Lower Shore Early Childhood Mental Health Consultation*



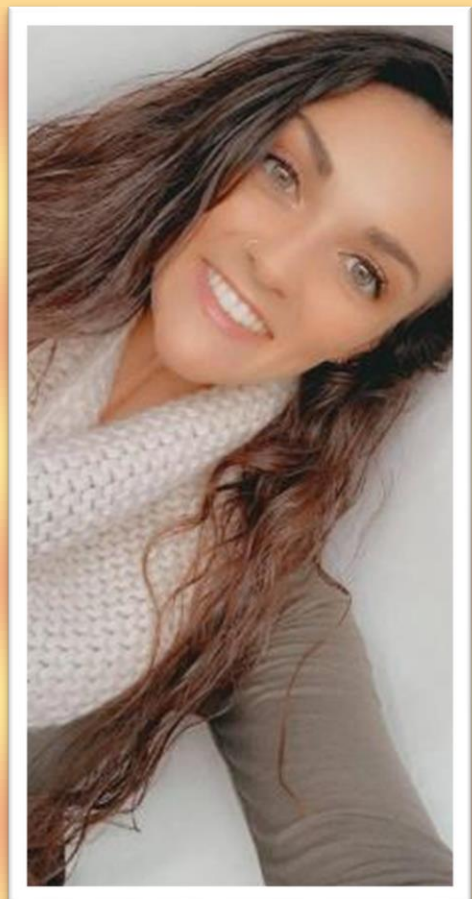
The Perry Point Homeless Domiciliary (DRRTP) is a rehabilitation program for the reintegration of homeless Veterans back into the community. Veterans can stay up to 180 days, if clinically indicated based on treatment goals. Veterans must have ability to work both physically and mentally at some capacity with a clear goal of eventual competitive employment. Any medical or psychiatric issues including substance abuse or other barriers to employment should be stabilized prior to referral (i.e., does not require inpatient hospitalization; does not need intensive monitoring or care of medical or psychiatric conditions). The focus of the program is on gradual community reintegration, learning independent functioning skills, and finding permanent housing. My role as an intern is to function as an assistant to the staff Social Worker and I have been assigned my own caseload. Responsibilities include doing Psychosocial Assessments, Treatment Plans, and Weekly Integrated Summaries. I will provide psychotherapy, case management, direct services such as assistance with benefits and community resources.

*Submitted by Gina O'Callaghan (pictured left)  
MSW Specialized Practice Student*

Courtney Cummings (pictured right) has been interning with Serenity Health, LLC, since August of 2021. Over the last two months Courtney has coordinated care with numerous community agencies including Parole and Probation, Mental Health Providers, Medical Providers, and additional referral agencies. Courtney's current internship responsibilities include overseeing a case load of 60 clients, which includes providing intake and annual assessments (biopsychosocial), creating and updating treatment plans, providing direct care (individual sessions), evaluation of stability in treatment, and providing recommendations and referrals.

Since starting the internship, Courtney has expanded her knowledge to include Methadone and pregnancy. Courtney has been involved with Pregnancy Groups, which are facilitated by Christiana Care Union Hospital Labor and Delivery nurses, individual counseling sessions with pregnant clients, and with a Pregnancy and Child Development Study through the University of Delaware.

*Submitted by Lisa Joyce  
Field Supervisor at Serenity Health, LLC*



Early 2020, social work agencies across the country faced incredibly difficult decisions about staffing, service delivery, and short-term planning. For the Religious Coalition's Emergency Shelter, those decisions were compounded by the critical needs that their client population faces. Fortunately, this agency received funding from the local government to house half of the shelter's clientele in a nearby hotel, reducing the risk of virus transmission. I have had the privilege of providing case management for these clients since August of 2021.

Having knocked on every client's door in the hotel, introduced myself, or dropped off a letter, I'm beginning to experience success in scheduling case management meetings. While my clients face significant barriers to finding long-term housing solutions, they also bring formidable and unconventional strengths to their case plans. One client has utilized her time in the hotel to build up a following for her illustrative work and has been selling drawings online to raise money for an apartment. Another client, diagnosed with a terminal illness, has worked hard with Religious Coalition to advocate to the Housing Authority for a housing placement, so he can "live his last days in (his) own home." I'm just beginning to get to know the resilient, determined, and gracious people who make up the "hotel clients." I'm looking forward to playing a part in their stories.

*Submitted by Andrew Moss (pictured right)  
MSW Generalist Student*



It is ironic that my pathway to macro social work began with my dad who was a dairy farmer. My dad liked people. He delighted in learning about their lives. He also served his beloved community through the web of relationships that connect and bind people together. This perspective has been very influential in my professional life, most of which has been spent leading community-based nonprofits. However, a few years ago, I stepped out of direct service to focus on community change, advocacy, and systemic challenges.

For my specialist year in field, I have a tremendous opportunity to develop my practice in these areas. I am tackling several projects within Talbot County Government. Working with our Emergency Operations Center, I am assisting with the mandatory five-year update to the Hazard Mitigation Plan and in undertaking an After Action Review of the county's coordinated response to COVID-19. My grassroots community perspective and network of relationships will be assets with these initiatives. Under the auspices of the county's Local Management, I am spearheading several racial equity initiatives including a community of practice program, trainings to educate and engage interested community in equity work and developing new resources to support community members in being agents of change in their spheres of influence. It is an honor to be able to be part of efforts like these that have real impact on the lives of my neighbors.

*Submitted by Nancy Andrew (pictured left)  
MSW Specialized Practice Student*





Our MSW Intern, Meg Cayer (pictured above & below), has participated in many opportunities, experiences, and activities here at The Family Center of Queen Anne's County. Here are just a few ...

- Attended a Field Trip to Family Affair Farm in Easton
- Participated in a Parent Cafe
- Assisted in Child Development Classrooms
- Observed a "Circle of Security" Parenting Class
- Attended an Advisory Board Meeting with Director
- Created bulletin boards for the Center
- Attended a staff meeting, in house case review, and service coordination meeting

In November she will participate in Make A Difference Day, attend a Home Visit with our In Home Interventionist/Home Visitor, and help plan and participate in many other activities planned for the center.

*Submitted by Jennifer Crossley*

*Field Supervisor at The Family Center of Queen Annes County*





We are excited to have Valerie Perez Vega (pictured above) join our team at Adolescent and Family Services for her 2021-2022 Field Placement. Adolescent and Family Services is an Integrated Behavioral Health Outpatient Center, providing both therapy and psychiatric treatment for children and adolescents, ages 4-18, and their families. We are one of several programs offered through the Anne Arundel County Health Department with two offices located in Glen Burnie and Annapolis. Ms. Perez Vega has started her internship by receiving a caseload of both English and Spanish speaking families with various treatment needs. She will be providing individual and family therapy to her families and collaborating with our staff of social workers, professional counselors, nurse practitioners, and psychiatrists along the way. She has already completed several psychosocial assessments and treatment plans for our patients as part of their journey through the therapeutic process. Ms. Perez Vega will also be participating in the Strengthening Families program which is an evidence-based, 14 session program, providing training in parenting and children's social and life skills. The program helps participants build a healthy and positive family relationship and works to prevent substance use disorders and risky behaviors. It's unique in that it focuses on the entire family at one time. We are proud to share that our Strengthening Families program is a recipient of one of the NACCHO's 2021 Innovative Practice Awards.

Ms. Perez Vega also helped our program celebrate Hispanic Heritage Month during the month of October. She created a festive display for our bulletin boards for all to enjoy! Our Spanish speaking families are extremely appreciative for her support and recognition.

*Submitted by Jennifer Wiejaczka  
Field Supervisor at Anne Arundel County Health Department*



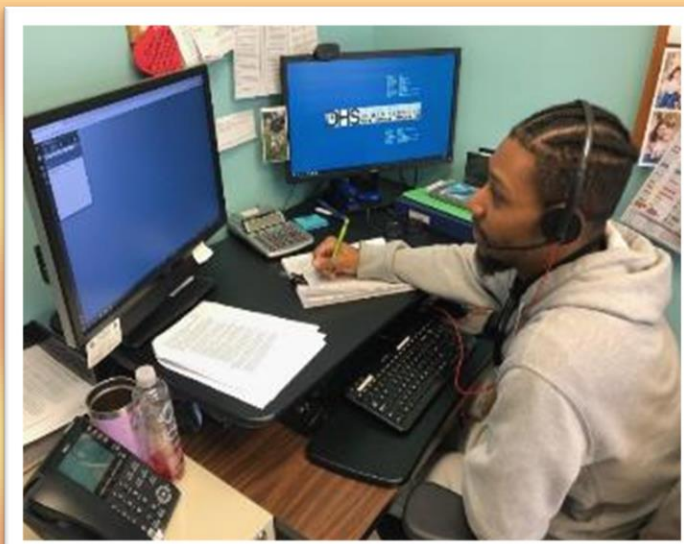
CPS Intern Michael Wilmot getting ready to go on a home visit



Adult Services Intern Gere Greene entering contacts into CJAMS

The Somerset County Department of Social Services is hosting five Salisbury University Interns this academic year. Our interns are getting experience in all areas of services to include Intake and Screening and the new statewide APS/CPS IVR Hotline, shadowing CPS workers to do assessments of child abuse and neglect concerns, supervising family visits involving children in foster care as well as working with our vulnerable adults within the community. Though there were concerns with the lack of space and lack of opportunities for the interns due to the on-going effects of the pandemic, we were able to work out schedules to ensure we do not have too many interns at once that we cannot appropriately social distance and our staff have been very accommodating in making sure they work with the interns to ensure they have experiences shadowing in the field. We are excited to, once again, partner with the University as we believe that the experiences students can get from a DSS internship can definitely assist them in deciding what it is that they want to focus on and what population they think they will best serve once they graduate.

*Submitted by Lori Engle  
Field Supervisor at Somerset County DHS*



Intake & Screening Intern Markeith Faniel using our IVR hotline to take a CPS referral





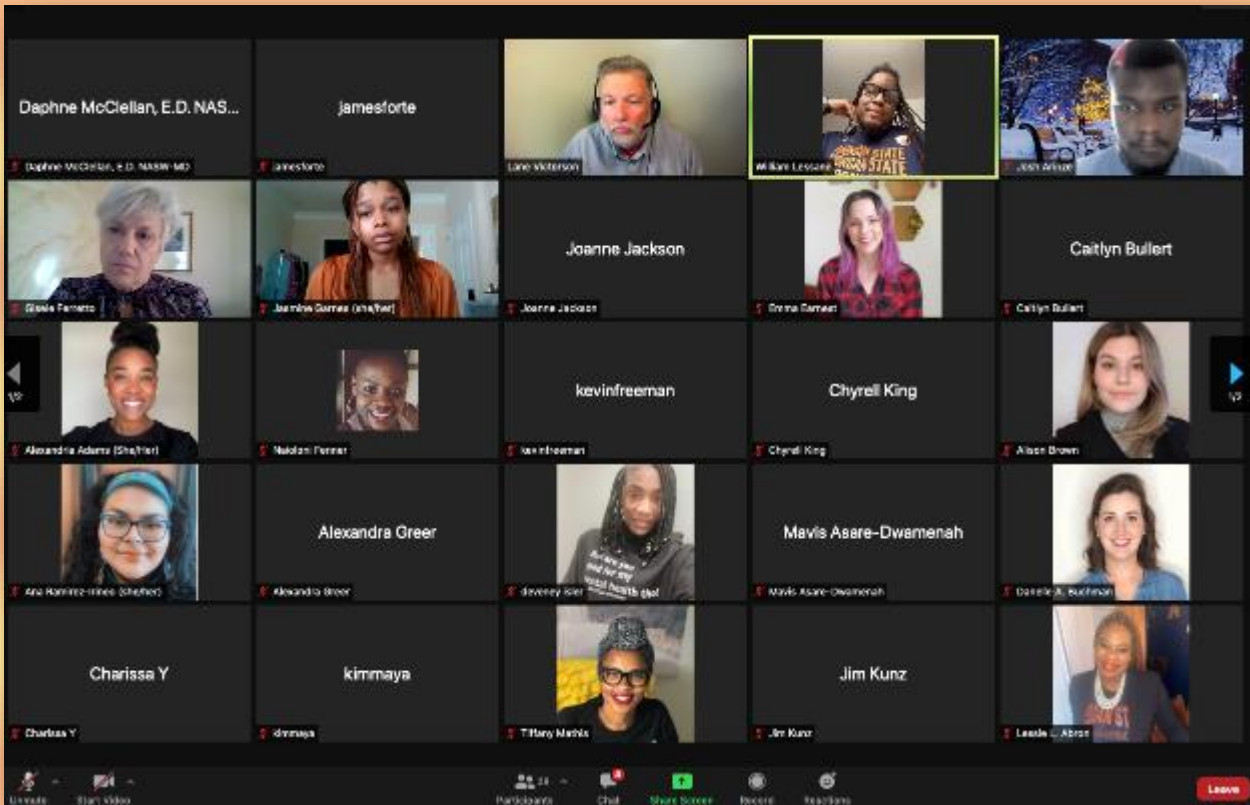
My MSW field placement is with Gaudenzia Park Heights in Baltimore City, Maryland. Gaudenzia is a residential treatment facility for substance use disorder w/without co-occurring mental illness. Many of our clients take the first step to recovery by voluntarily checking themselves in for treatment, while others may come from the correctional system or they may be court ordered for treatment. I am interning in the intermediate care facility (ICF). When clients arrive at Gaudenzia most start in a seven-day detox and then roll over to ICF for up to twenty-eight days. Once a client completes the program, they will either receive long-term care at one of our facilities, they may do an intensive outpatient program, or they may go home.

Interning at Gaudenzia is an excellent learning opportunity and I am grateful that I can be a part of their team. The entire staff has been very welcoming, and they are all willing to answer all my questions. I enjoy meeting the clients and being a source of encouragement for them. As an intern I meet with the clients to do their biopsychosocial assessment as well as other assessments. I attend their community meetings and will be doing group therapy with the clients once a week. I never saw myself working with this population, but it is a rewarding experience when you know you have helped someone. I have worked with clients from the assessment process to completing their program. Everyday is another learning opportunity that I look forward to.

*Submitted by Dawn Rasmussen (pictured above)*  
*MSW Specialized Practice Student*



## NASW-MD Biennial Student Conference



Salisbury University School of Social Work students participated in the virtual National Association of Social Work-Maryland Chapter (NASW-MD) student conference on Saturday November 6th. The keynote presenter was Lane Victorson, the Director of Community Organizing / Neighborhood Fellows at the University of Maryland School of Social Work. He illustrated the use of the SHARP framework (structural oppression, historical context, analysis of role, reciprocity and mutual, and power) to understand the historical events and processes including racist zoning practices, corporate decisions to relocate manufacturing jobs, and white flight that have resulted in multigenerational poverty in Baltimore. Executive Director, Daphne McClellan provided an overview of social work licensure and related advocacy by NASW-MD. A panel on social work practitioners talked about career opportunities in the areas of private practice, school social work, child welfare, international social work, and geriatric social work. The event ended with opportunities to meet graduate school representatives from five different programs including ours at Salisbury University.

*Professor Jim Forte, SSW Representative to NASW-MD*



“The purpose of Phi Alpha Honor Society is to provide a closer bond among students of social work and promote humanitarian goals and ideas. Phi Alpha fosters high standards of education for social workers and invites into membership those who have attained excellence in scholarship and achievement in social work.”

The following students will be inducted into the Chi Eta Chapter of Phi Alpha Honor Society in December 2021:

*BASW Students:*

Key’Ayja Alston-Dashiells, Salisbury University  
Crystal Draper, USMH  
Parker Gesford, USMH  
Kaitlyn Jones, Salisbury University  
Johnay Kibler, Salisbury University/UMES  
Mark Lee, Cecil College  
Kristianne Leibley, USMH  
Kaitlin Magaw, Cecil College  
Katelyn Stokes, UMGC

*MSW Students:*

Nelson Andrade, UMGC  
Sara Applin, Salisbury University  
Jordan Atwell, Salisbury University  
Caley Bennett, Salisbury University/Online  
Jessica, Clark-Parrick, Salisbury University  
Katharine Crook, ESHEC  
Rani Gutting, ESHEC  
Callie Hentz, Salisbury University  
Margaret Lohr, Salisbury University  
Judith McNeely, UMGC  
Taylor Myers-Morgan, Salisbury University  
Briana Pedroza, UMGC  
Kerry Price, Salisbury University  
Mary Scruggs, UMGC  
Marciana Senires, Salisbury University  
Colin Simms, Salisbury University/Online  
Afi Toulassi, Salisbury University  
Jaleesa Young, Salisbury University

*Congratulations!*



For more information about the Phi Alpha Honor Society visit:

<https://www.salisbury.edu/socialwork>

<https://phialpha.org>



We are very thrilled to announce that Asian Student Social Workers (ASSW) has it's very first Executive Board. Executive Board members who were elected are:

- Miriam Wall -- President
- Deepika Sharma -- Vice President
- Haley Armacost -- Social Media/Events
- Kyarah Pete -- Secretary/Treasurer

The new board members will meet this month to discuss strategic planning and team building.

*For more information about ASSW:*

Email: Dr. Sook Hyun Kim ([shkim@salisbury.edu](mailto:shkim@salisbury.edu))

Twitter: @AsianWorkers

Website: [Asian Student Social Workers](http://Asian Student Social Workers)

## Nia Mentoring Initiative



NIA Mentoring Initiative mentees from both Social Work and Nursing come together to volunteer at the BGCS - Cambridge!

Special thanks to Jayla Jones & Clifton McEachin (pictured left) for enriching our community!



NIA mentee, Joshua Nicolas (pictured left), celebrates completing his BSN.

Joshua is taking a position at Tidal Health as an Emergency Department nurse.

The NIA Mentoring Initiative within the School of Social Work is named after the fifth Kwanzaa principle, Nia, which focuses on developing community support and personal purpose. The initiative focuses on the success and retention of students of color. It provides a forum for exploring the unique college experiences of students of color attending a predominately white institution. NIA mentees are paired with mentors who model exemplary service to the community. NIA has grown by leaps and bounds over the last three years. Recently, the initiative expanded to incorporate students of color from the School of Nursing. NIA currently has 14 committed undergraduate and graduate students, seven (7) dedicated community mentors, and three (3) faithful faculty advisors/mentors.

For more information about the NIA Mentoring Initiative, contact Dr. Alessia Owens-King at [apowens@salisbury.edu](mailto:apowens@salisbury.edu).

## School of Social Work Alumni Network



The School of Social Work celebrated Homecoming Weekend with an Alumni Social at the Brick Room in Salisbury on Friday, October 22nd. Alumni came from as far as Washington D.C. to connect with faculty and fellow colleagues. It was a great time catching up with everyone and hearing about all of the exciting things our alumni have been doing since graduation! We hope to see you at our next event! Join the Salisbury U School of Social Work Alumni Facebook group to stay up to date on our happenings!

<https://www.facebook.com/groups/2159621824342195>



The School of Social Work is excited to announce the creation of two Alumni Awards to be given annually starting in March 2022. We are currently accepting nominations for our Distinguished Alumni and Rising Professional Alumni Awards. For more information on the award criteria, please visit our new Alumni & Friends website <https://www.salisbury.edu/academic-offices/health-and-human-services/social-work/alumni-friends.aspx>

To submit a nomination or self-nomination by January 15th, click here:

[https://salisbury.co1.qualtrics.com/jfe/form/SV\\_3t6yR6FjAxHFXCK](https://salisbury.co1.qualtrics.com/jfe/form/SV_3t6yR6FjAxHFXCK)

Are you a graduate of the Salisbury University School of Social Work? Click the Facebook button to join the Alumni Group:



# Graduating Students:



Students, Friends and Family are invited to watch our Virtual Graduation Celebration on Saturday, December 11<sup>th</sup> at 10am live on our [YouTube](#) channel!

## Field Office Spring Internship and Career Fair



Is your social work agency looking for student interns or employees? Join Salisbury University's School of Social Work Field Education Office as we host a virtual internship and career fair!

**Thursday, February 24th 4-6pm EST**

*This is a virtual (Zoom) event.  
Registration is required.*

[Register Now](#)