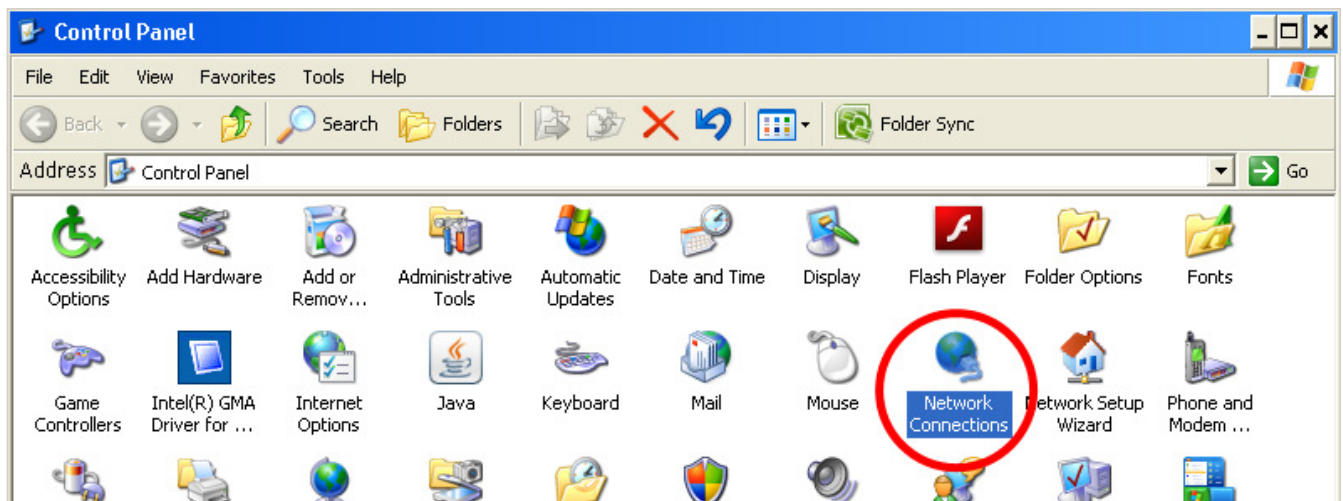


# Secure Wireless Network Access

*How to configure your Windows XP PC to access the "SU-Secure" wireless network*

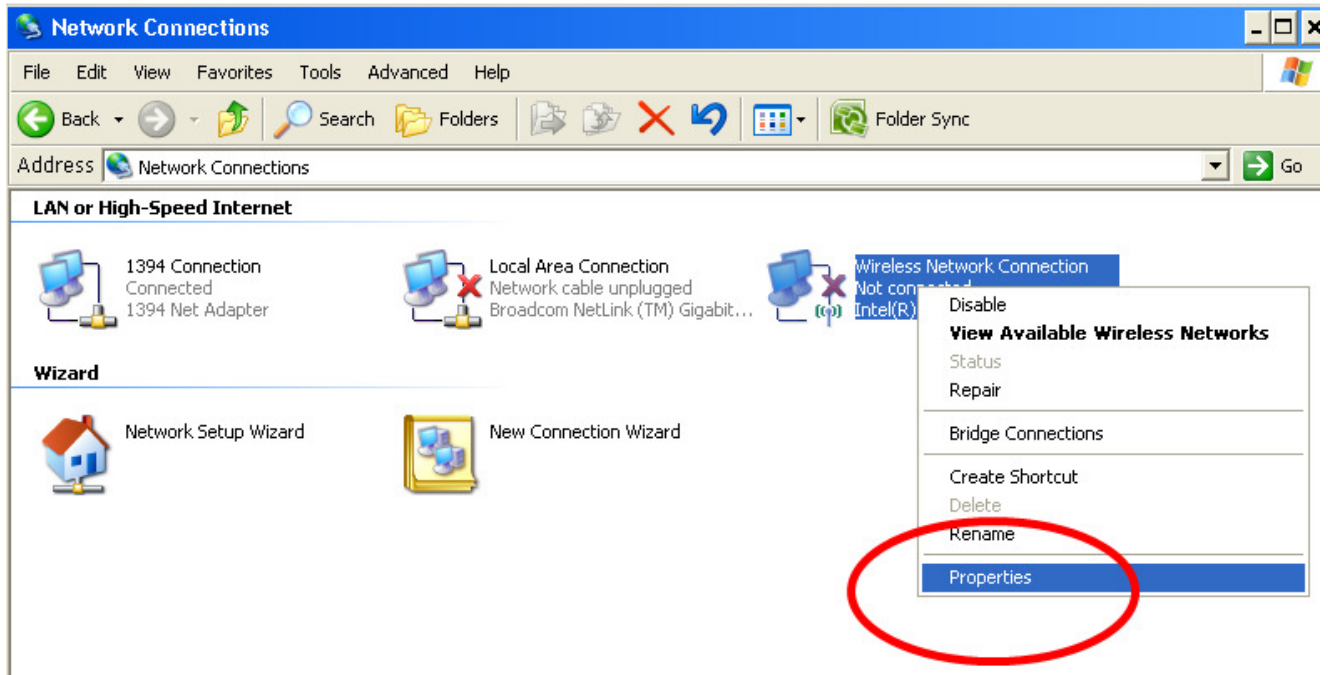
## Step 1

Open the control panel and select "Network Connections". To access the control panel, click the START button and select Control Panel.



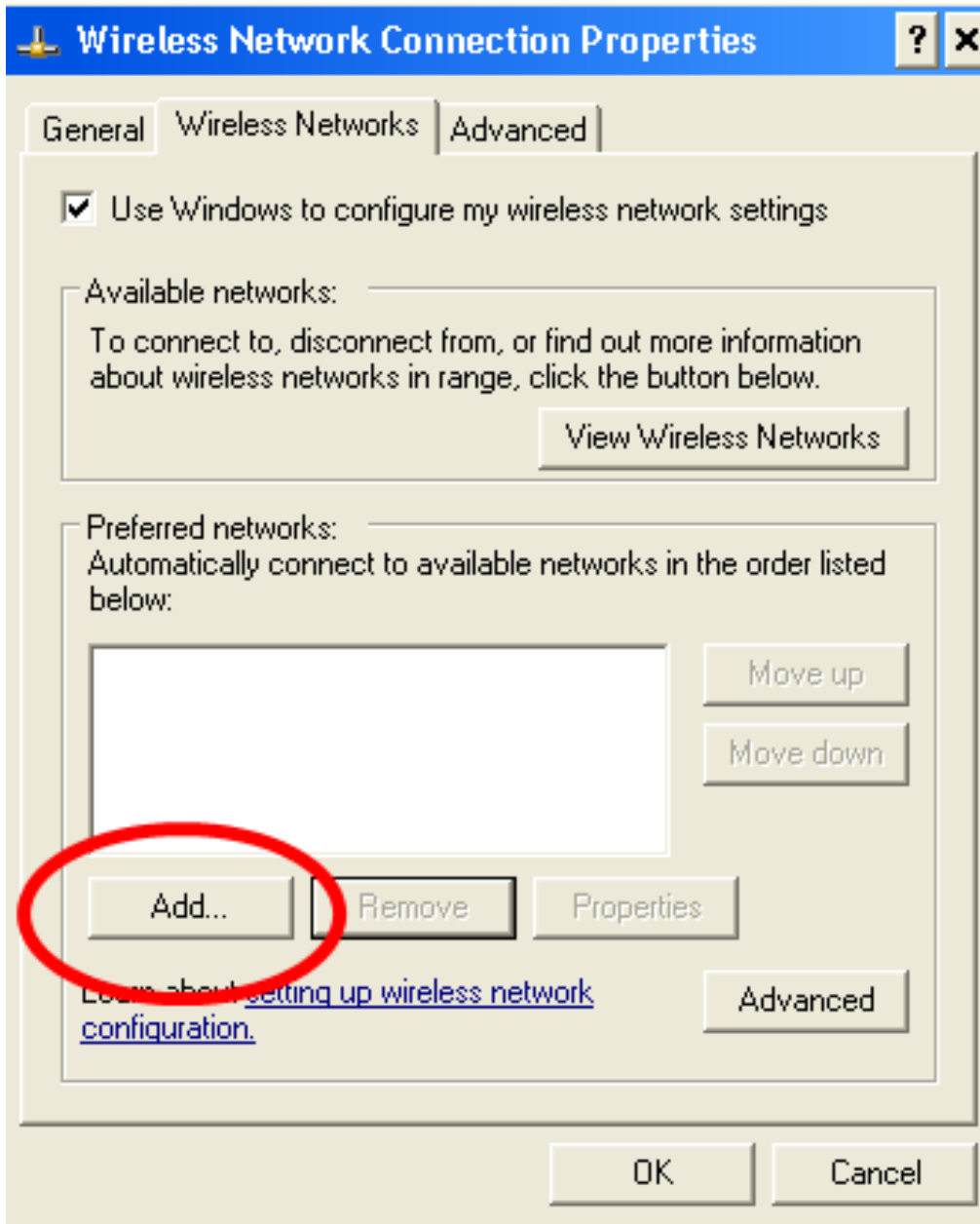
## Step 2

Right click your wireless network icon and select “Properties”



### Step 3

Select the "Wireless Networks" tab and click the "add" button



## Step 4

Type the name "SU-Secure" for the network name and use the settings outlined below. Then click the Authentication tab.

**Wireless network properties** [?] [X]

Association | **Authentication** | Connection

Network name (SSID):

Connect even if this network is not broadcasting

Wireless network key

This network requires a key for the following:

Network Authentication:

Data encryption:

Network key:

Confirm network key:

Key index (advanced):

The key is provided for me automatically

This is a computer-to-computer (ad hoc) network; wireless access points are not used

OK Cancel

## Step 5

Select the EAP type listed below, select the first checkbox, and click properties

**Wireless network properties** ? X

Association | **Authentication** | Connection

Select this option to provide authenticated network access for wireless Ethernet networks.

Enable IEEE 802.1x authentication for this network

EAP type: Protected EAP (PEAP

Properties

Authenticate as computer when computer information is available

Authenticate as guest when user or computer information is unavailable

OK Cancel

## Step 6

Fill in the settings below and select the configure button. NOTE: If you DO NOT have the “thawte Primary Root CA” in your list below, you can download it on our website: <http://www.salisbury.edu/resnet/wireless.html>

The screenshot shows the "Protected EAP Properties" dialog box. The "When connecting:" section has the following settings: "Validate server certificate" is checked; "Connect to these servers:" is checked with "wlan.salisbury.edu" entered in the text box; "Trusted Root Certification Authorities:" list has "thawte Primary Root CA" checked; "Do not prompt user to authorize new servers or trusted certification authorities." is unchecked. The "Select Authentication Method:" section has "Secured password (EAP-MSCHAP v2)" selected in the dropdown, "Configure..." button, "Enable Fast Reconnect" checked, "Enable Quarantine checks" unchecked, and "Disconnect if server does not present cryptobinding TLV" unchecked. "OK" and "Cancel" buttons are at the bottom.

**Protected EAP Properties**

When connecting:

- Validate server certificate
- Connect to these servers:  
wlan.salisbury.edu
- Trusted Root Certification Authorities:
  - Thawte Personal Premium CA
  - Thawte Premium Server CA
  - thawte Primary Root CA
  - Thawte Server CA
  - Thawte Timestamping CA
  - UTN - DATACorp SGC
  - UTN-USERFirst-Client Authentication and Email
- Do not prompt user to authorize new servers or trusted certification authorities.

Select Authentication Method:

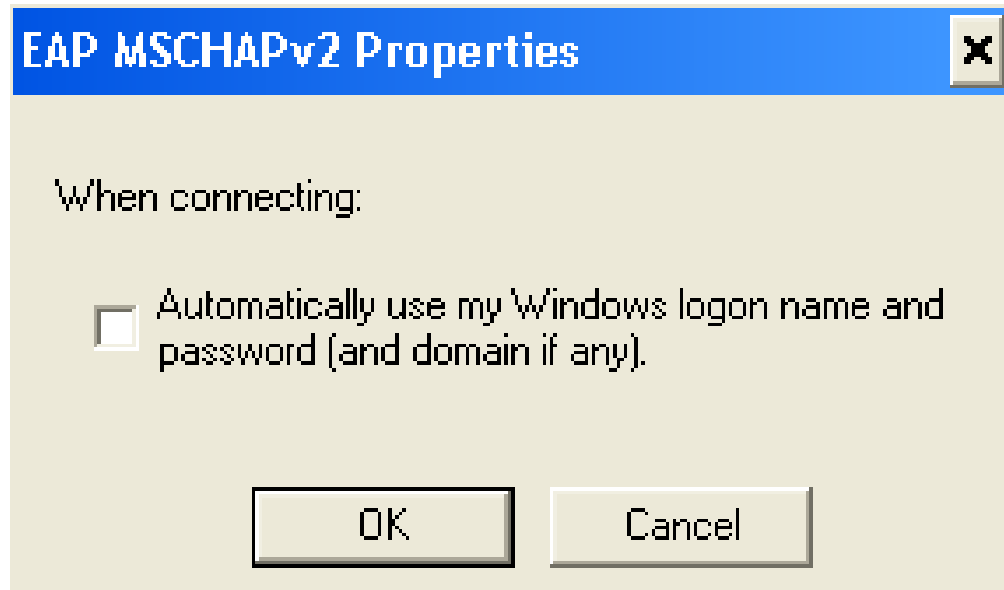
Secured password (EAP-MSCHAP v2) Configure...

- Enable Fast Reconnect
- Enable Quarantine checks
- Disconnect if server does not present cryptobinding TLV

OK Cancel

## Step 7

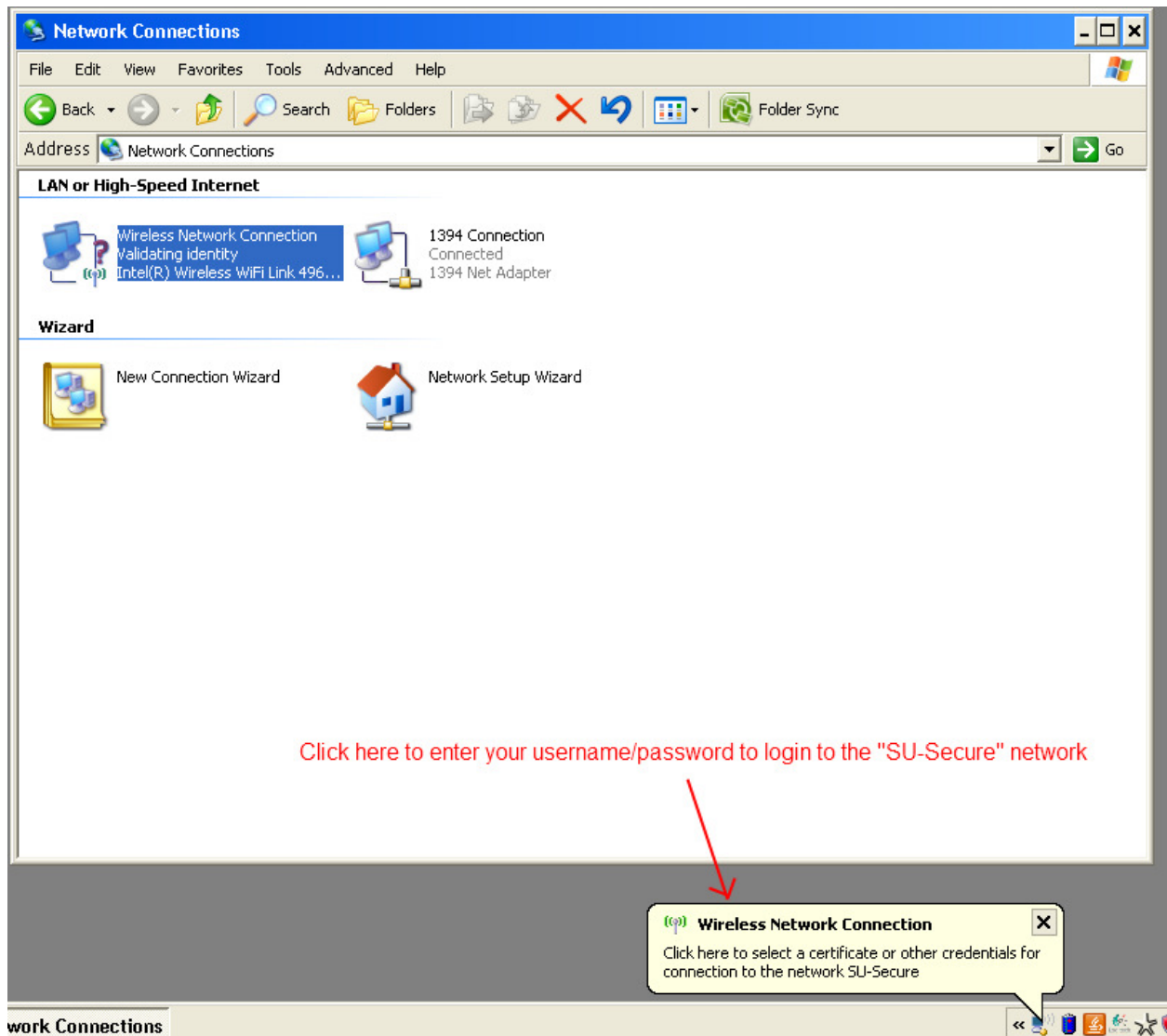
Uncheck the box below



After clicking "OK" on the above box, click "OK" again on the Protected EAP Properties window (displayed in Step 6). Click "OK" again on the Wireless Network Properties window (displayed in Step 5). At this point, all your settings are saving and you can proceed in connecting to the network.

## Step 8


A text bubble will pop up on the bottom right corner of your screen...Click the box to bring up the username/password window so you can enter your login credentials. If you do not see this box, just try to connect to the "SU-Secure" wireless network.



## Step 9

Once you attempt to connect to the “SU-Secure” wireless network, you will get a login box similar to the one shown below. Your User Name and Password are the same that you would use to login to a lab machine on-campus. DO NOT enter anything into the “Logon domain” box. If you wish, you can check “Save this user name and password for future use” so you do not have to enter this information in again until your password expires and is changed.

### Enter Credentials



User name:

Password:

Logon domain:

Save this user name and password for future use

OK Cancel