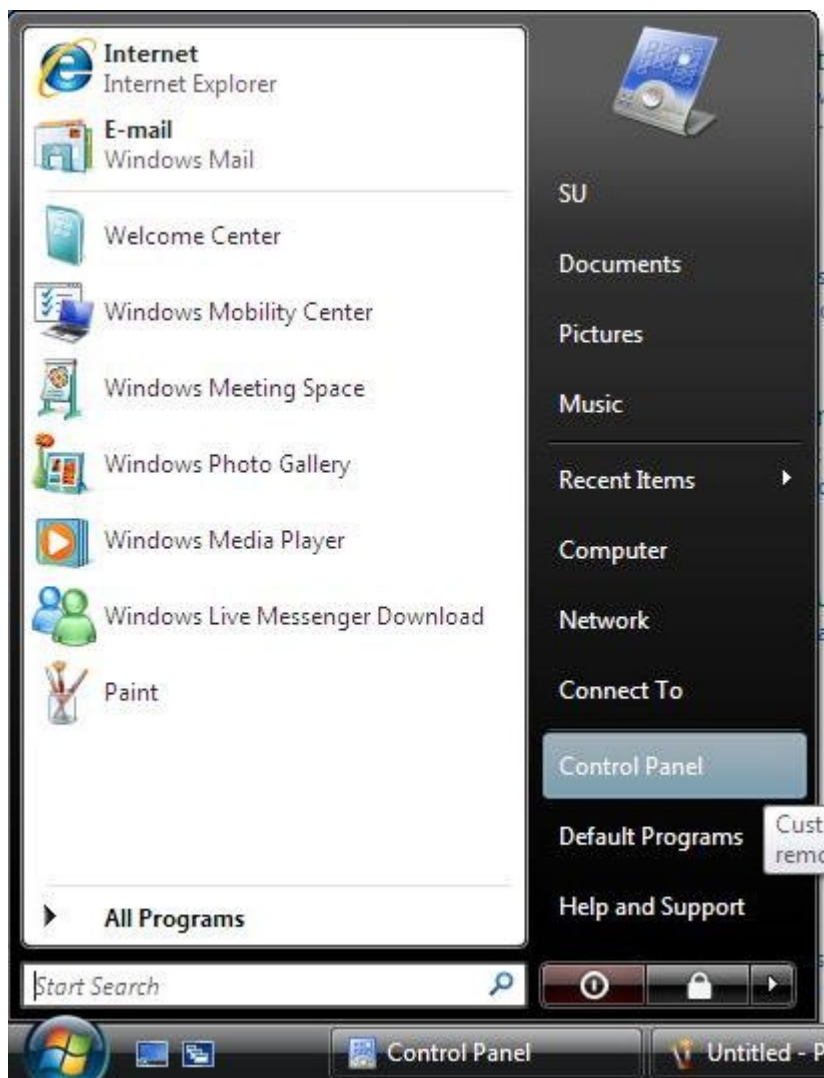


# Secure Wireless Network Access

*How to configure your Windows Vista PC to access the "SU-Secure" wireless network*

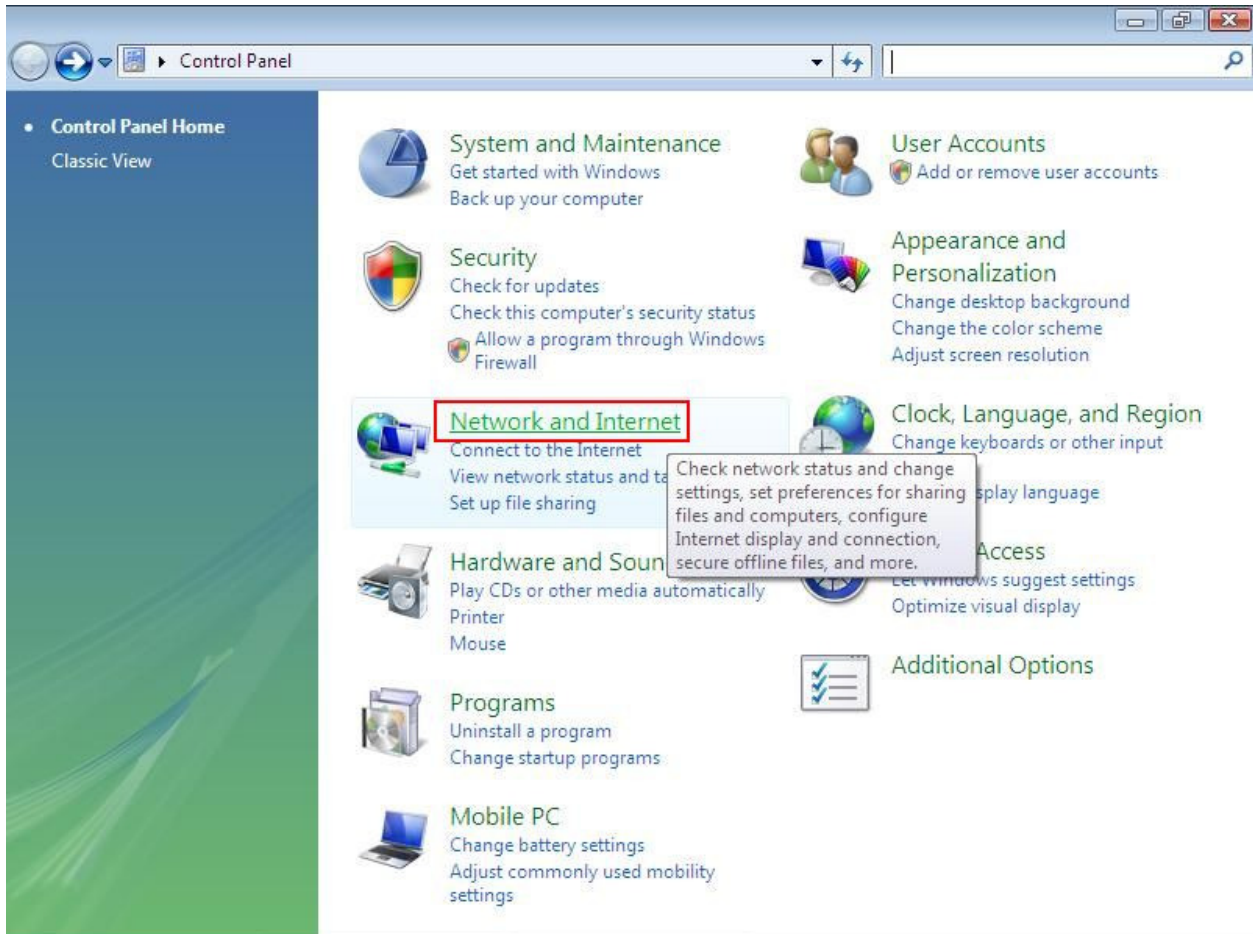
## Step 1

Click the START button and select Control Panel.



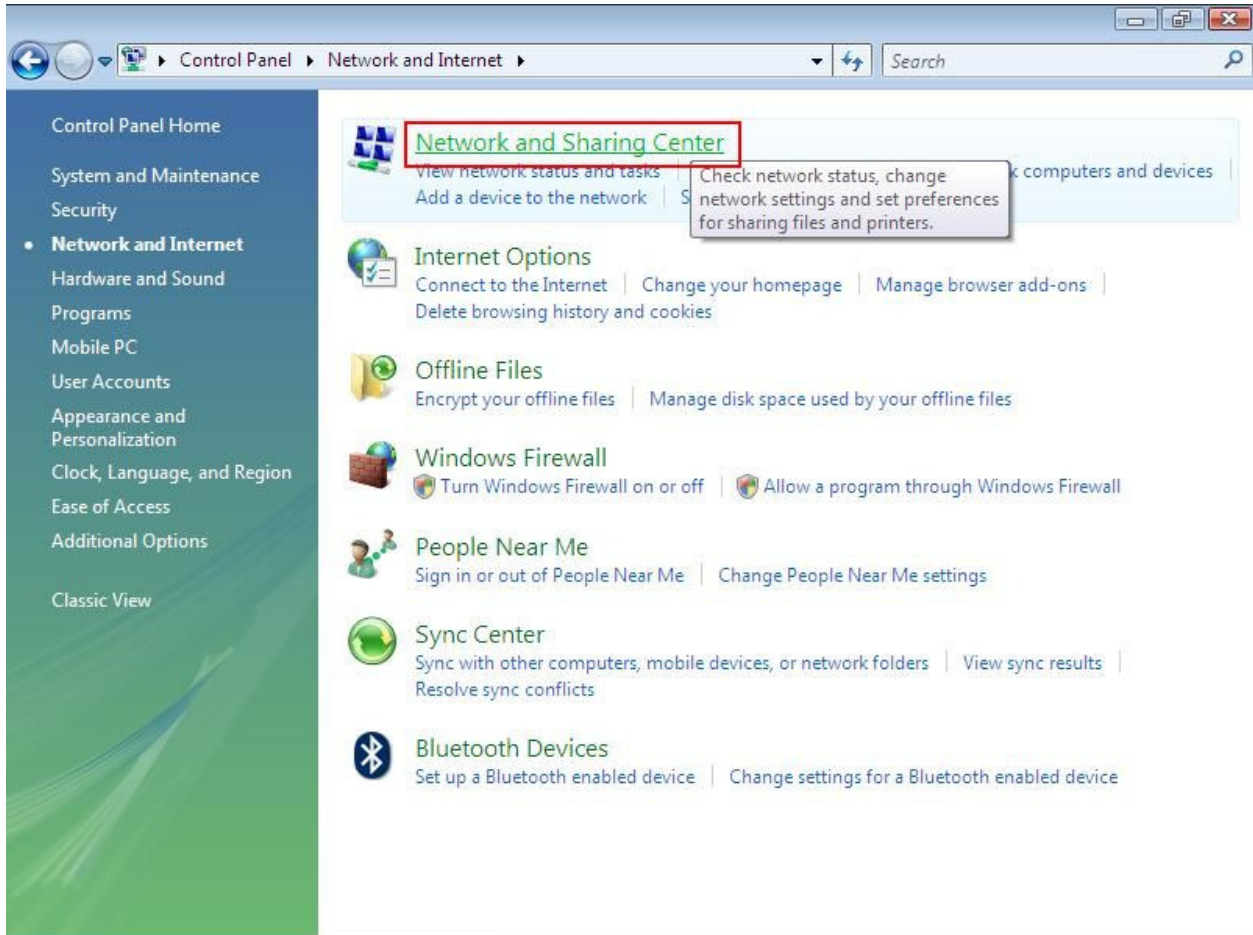
## Step 2

Select "Network and Internet" from the list.



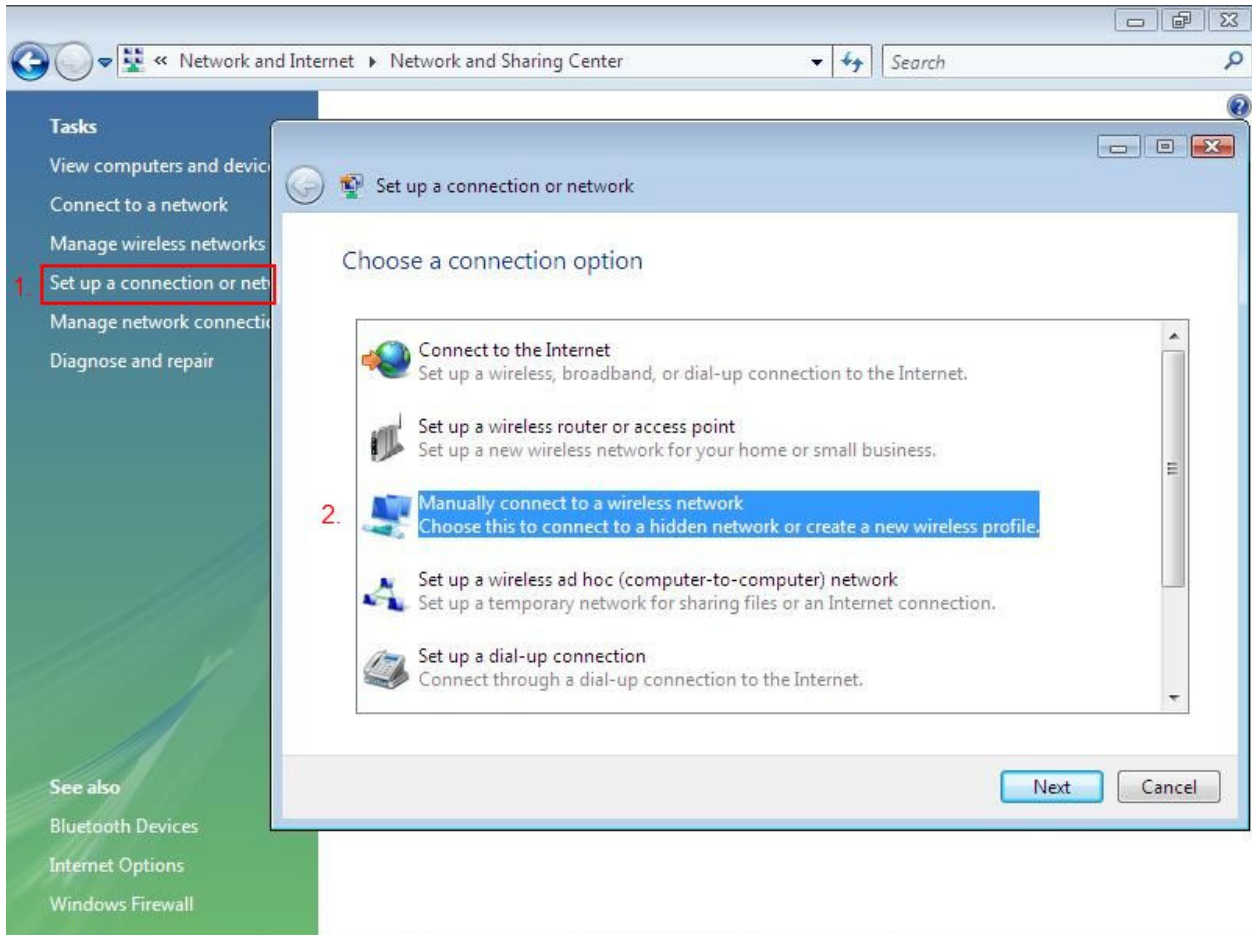
### Step 3

Select "Network and Sharing Center".



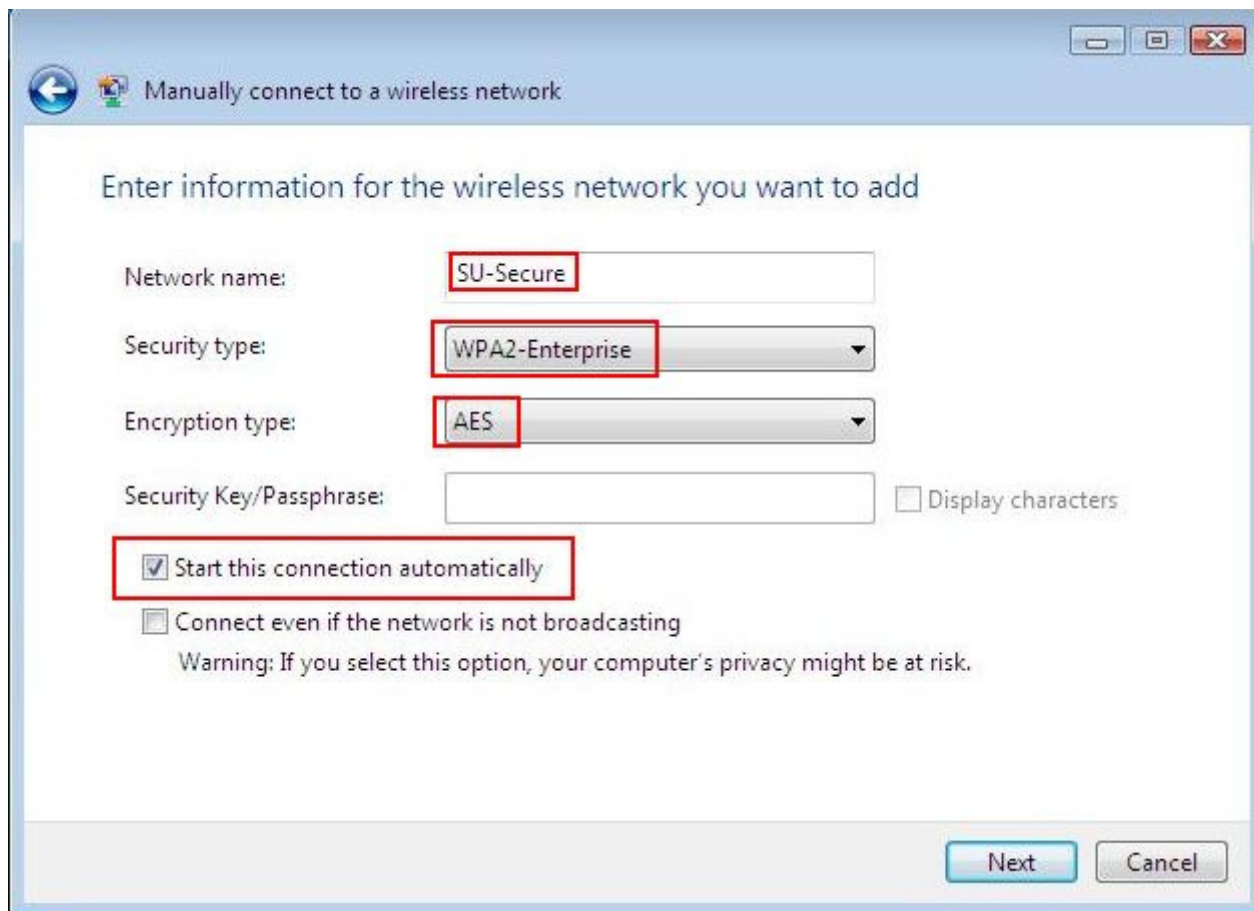
## Step 4

On the left under TASKS, select “Set up a connection or network”. Then select “Manually connect to a wireless network”.



## Step 5

Fill out the information as shown below, then click Next.



Manually connect to a wireless network

Enter information for the wireless network you want to add

Network name:

Security type:

Encryption type:

Security Key/Passphrase:   Display characters

Start this connection automatically

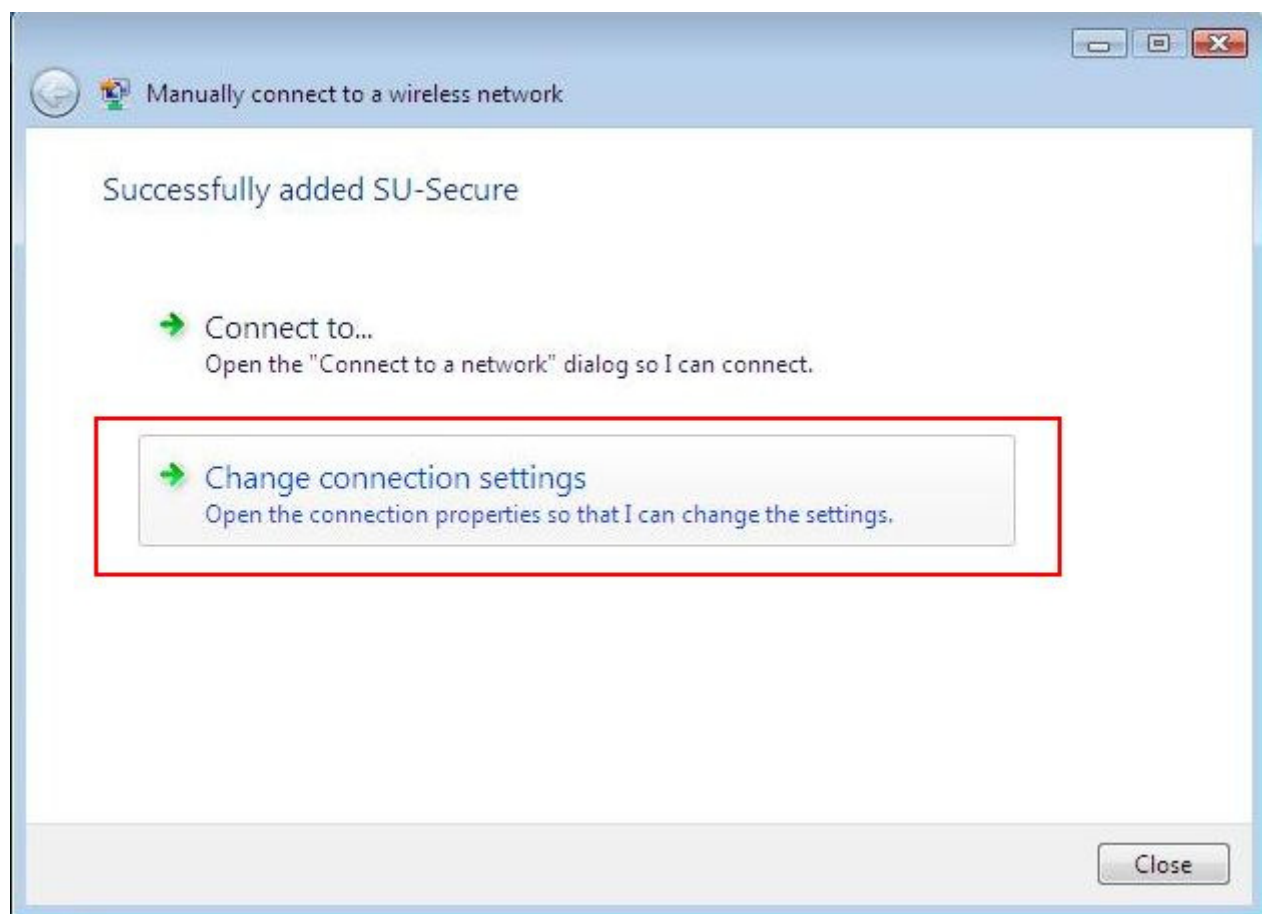
Connect even if the network is not broadcasting

Warning: If you select this option, your computer's privacy might be at risk.

Next Cancel

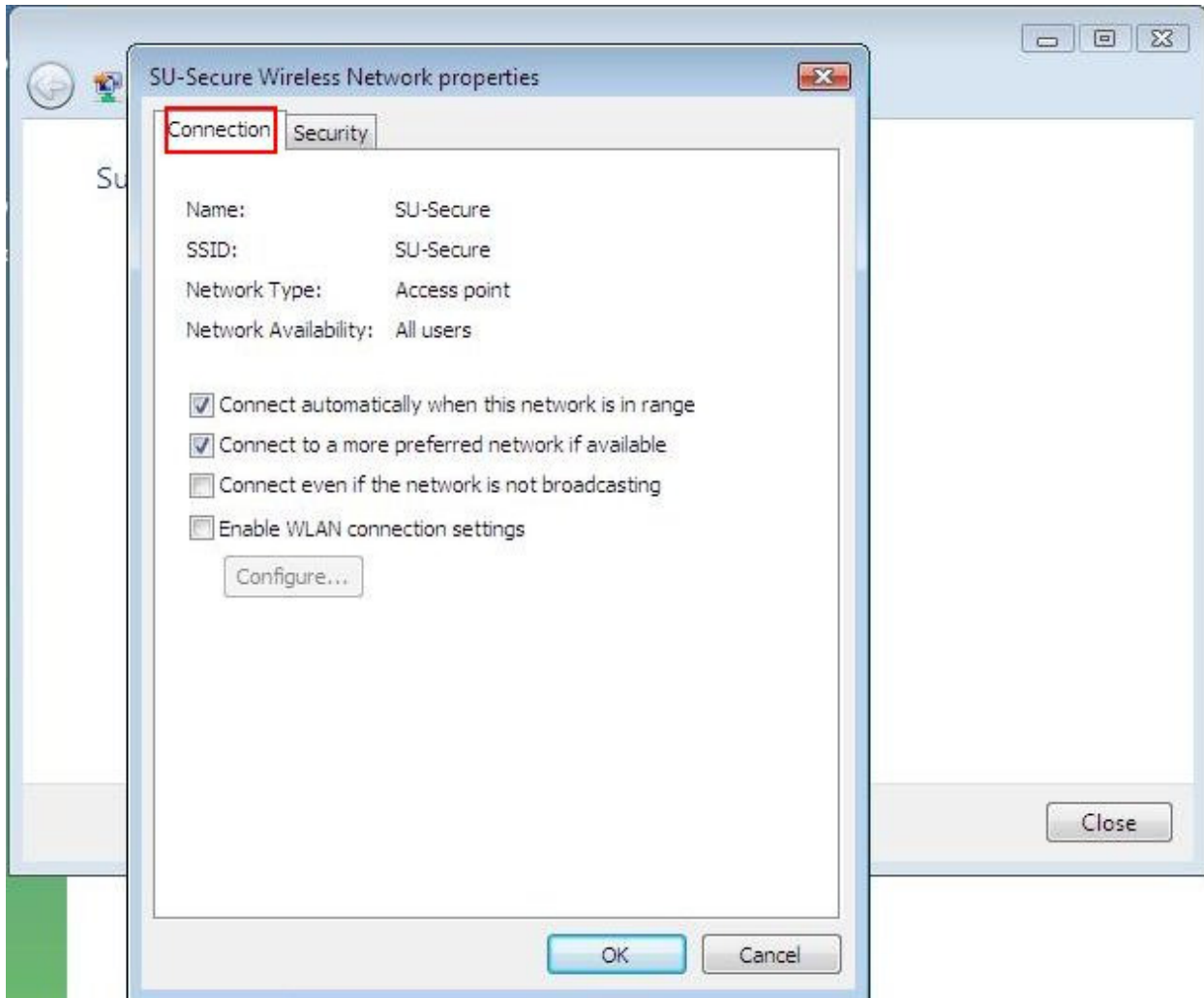
## Step 6

Select "Change connection settings".



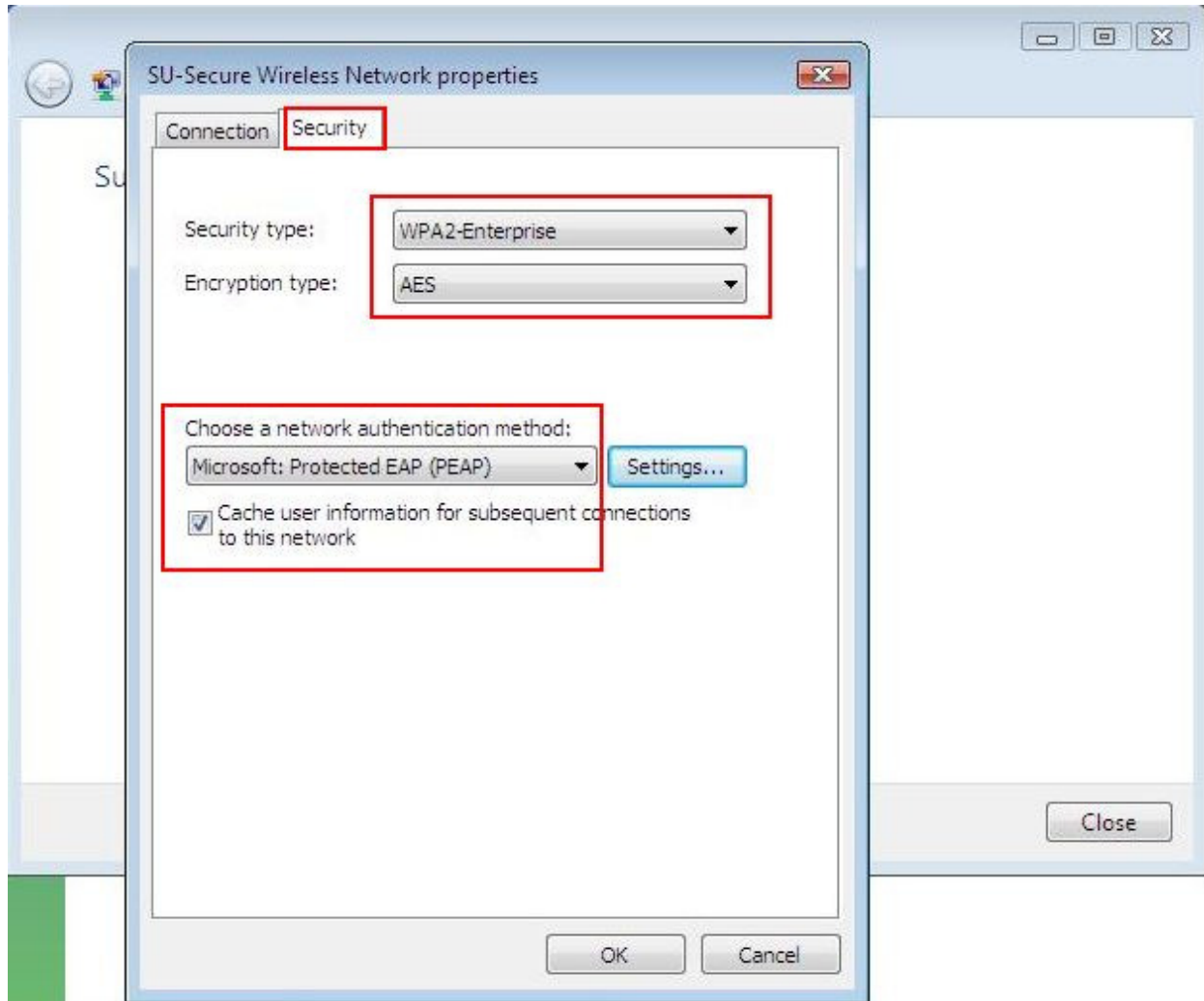
## Step 7

In the connection tab, make sure the options are checked as shown below. When done, click the Security tab and proceed to the next step.



## Step 8

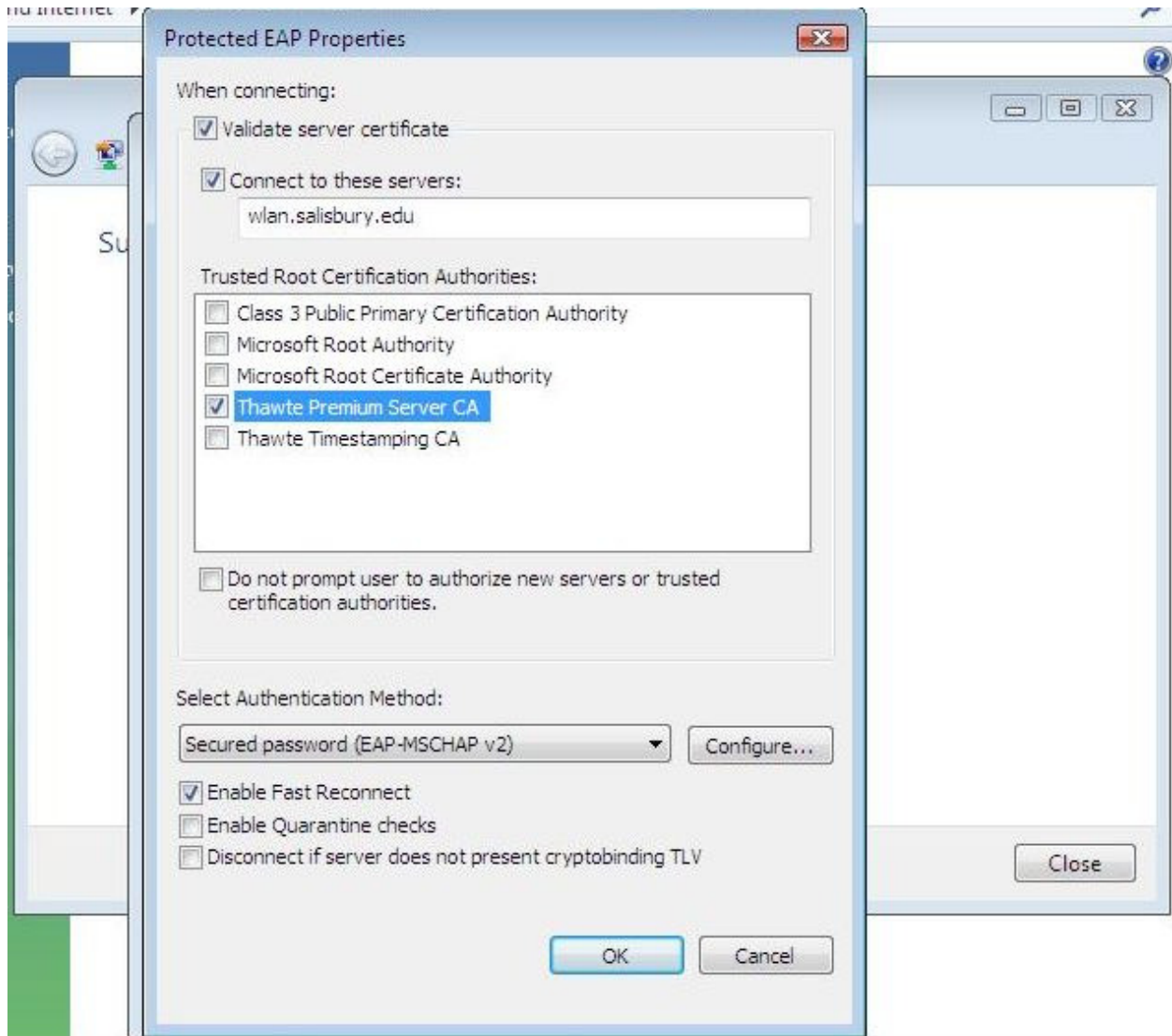
Once you are in the Security section, select the options that are shown below. When finished, click the “Settings” button next to the “Choose a network authentication method” and proceed to the next step.



## Step 9

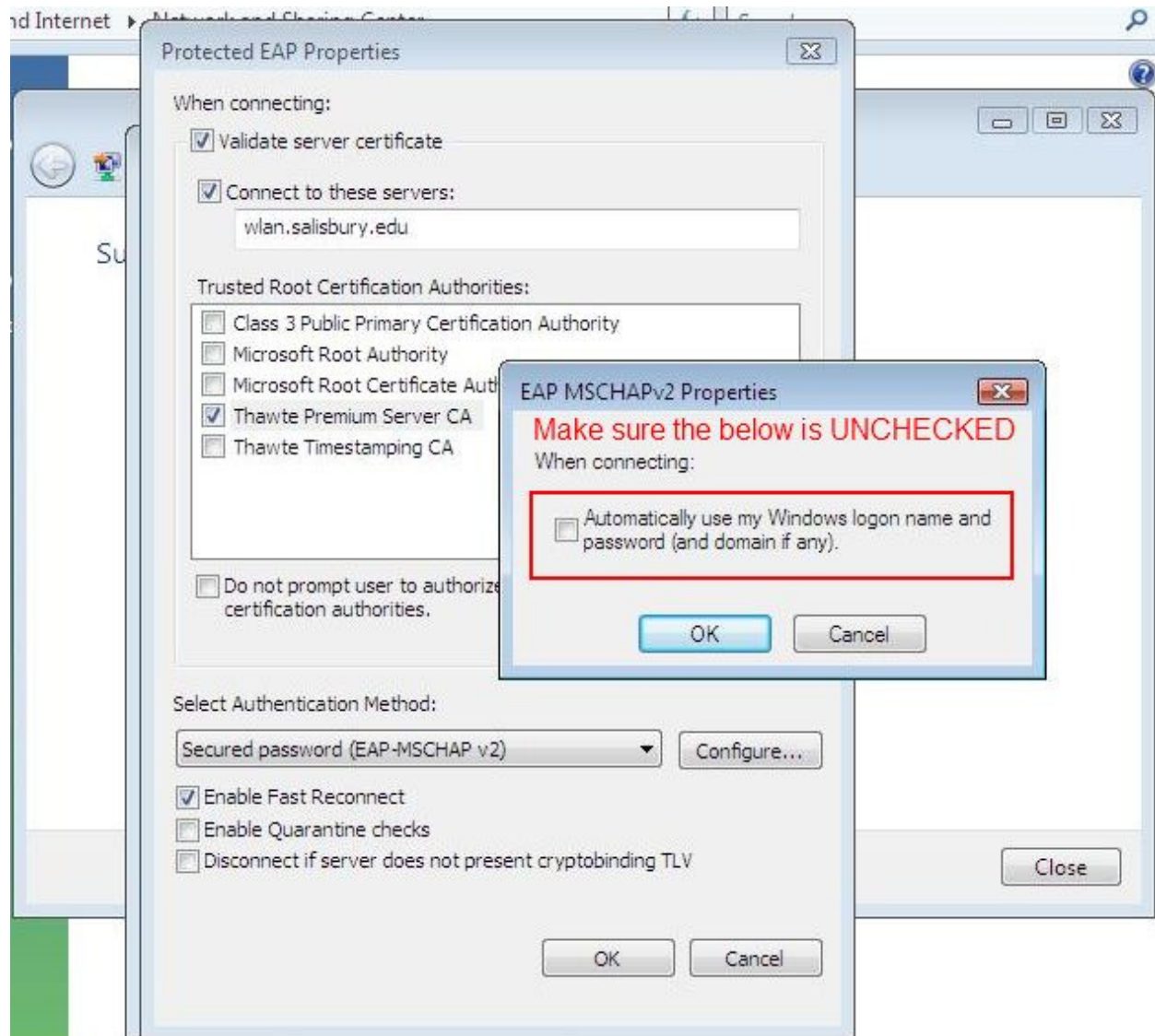
Enter the options shown below. If you do not have “Thawte Premium Server CA” in your Trusted Root Certification Authorities list, then you can leave the checkboxes in that section blank and you will be prompted to “trust” the certificate when you connect (you will want to trust it). Make sure the “Do not prompt user to authorize new servers or trusted certification authorities” is UNCHECKED, as this will help you in connecting to SU-Secure if you do not have the certificate listed below.

When finished here, click the “Configure” button and proceed to the next step.



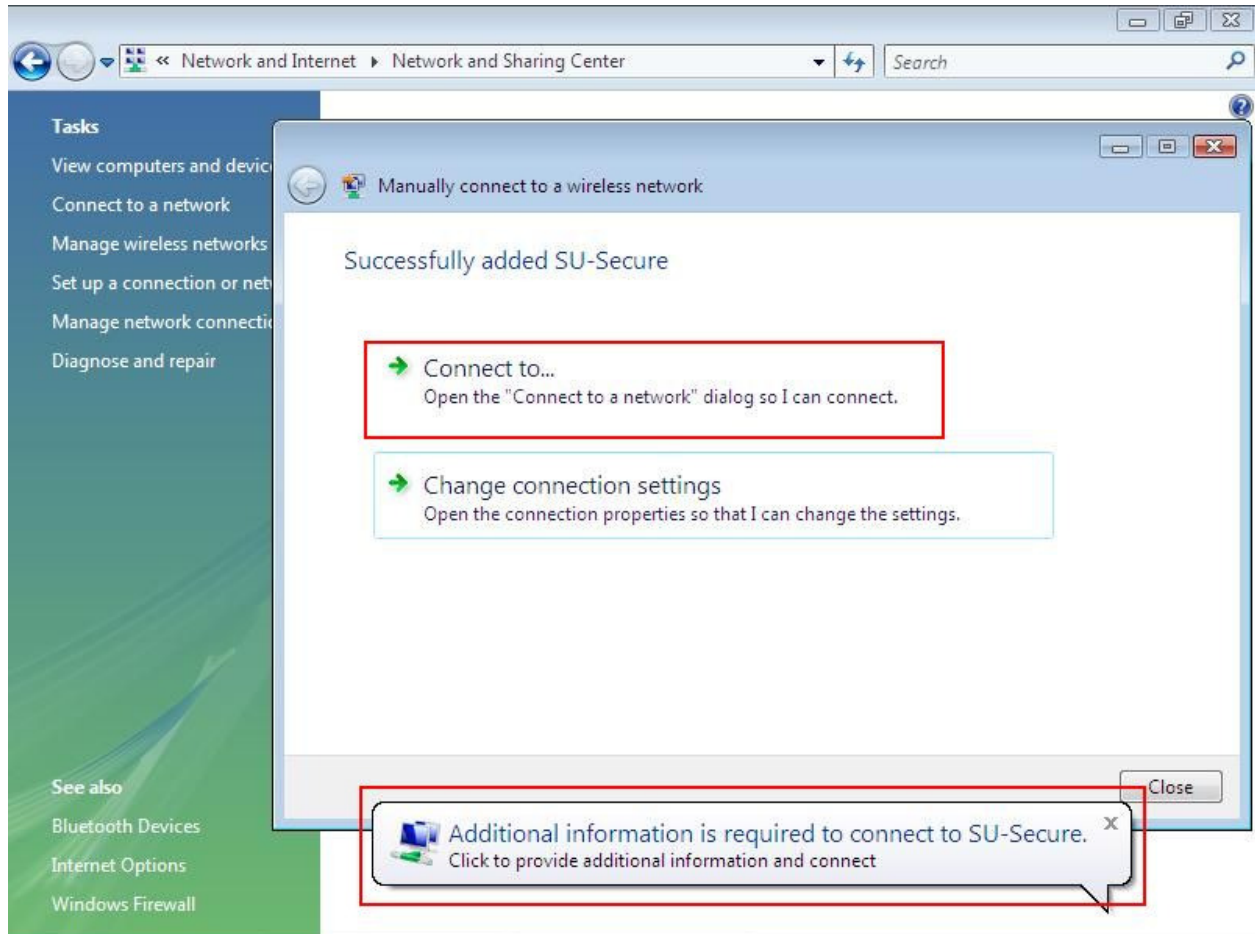
## Step 10

After clicking Configure, please make sure the highlighted checkbox below is UNCHECKED. Then click OK. You then want to click OK on the “Protected EAP Properties” window you were just at, with the Configure button.



## Step 11

If you have the prompt displayed at the bottom of this image (Additional information is required to connect to SU-Secure) then click that. Otherwise, click "Connect to..." and select SU-Secure from the list and "connect".



## Step 12

Once you try to connect to SU-Secure after configuring that network, you will get the prompt shown below. Please make sure you enter your User name and Password, just as you would if you were accessing a lab machine on campus. Please type "SALISBURY" for the Logon domain. If it isn't greyed out, you can click on "Save this user name and password for future use" to prevent this step in the future.



Enter Credentials



User name:

Password:

Logon domain: **SALISBURY**

Save this user name and password for future use

OK Cancel