



IN THIS ISSUE:

- *MyClasses Learn Tip*—2
- *Teaching & Learning Conference*—2
- *Migration Help*—3
- *Educause*—4
- *Website to Visit*—4
- *Winter Calendar*—5



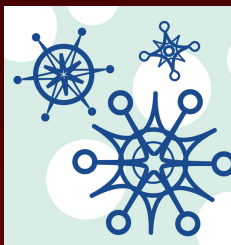
MyClasses@SU
Migration from
"Campus Edition" to "Learn"
Information

**Visit our new
Migration website!**



**ID&D Closes December
17th at 5pm.**

**We will reopen at 8am
on January 3rd.**



DEC 2010 / JAN 2011

Blackboard Learn Gets an Upgrade, Already!

MyClasses Learn launched just this fall and already we have started to make improvements upon the system. Throughout the first half of the semester, we received multiple improvement suggestions and have forwarded them to Blackboard. A lot, but not all, of those concerns have been addressed in the latest release of Blackboard Learn 9.1 (referred to as Service Pack 2—SP2).

We held a MyClasses Users Group in November to debut these changes to faculty. Faculty and Students were effected by this upgrade, which occurred on Monday, November 22nd. Some of the most prominent fixes and improvements include:

For Students

- Test-takers are reminded to submit answers before they are allowed to leave an assessment.
- Test-takers who previously clicked Save All might have experienced inconsistent behavior where it erased all answers. This has been corrected.
- Students who attempt to submit a blank assignment will be warned before submitting.
- Students can see submitted files and feedback from instructors in the Grade Center.
- Students can see indexed blogs or journals from previous months.

For Faculty

- Move and Copy are now two distinct options for content items. This allows items that cannot be copied such as Tests, Surveys, and Assignments to be moved to another location.

- Banner images will display on the Dashboard as well as the Announcements and Content Areas.
- Items hidden in the table of contents in Learning Modules are made unavailable so they cannot be accessed directly.
- Learning Modules have been enhanced so that when they are copied, links to any tests, assignments, or surveys, are created.
- Learning Modules originally setup to open in a new window can be changed back to open in the same window. This alleviates the problem of student not seeing content when it opened in the original window and not the new window.
- Instructors can view images added to blogs or discussions by students.
- Instructors can clearly identify and grade users who are members of Groups participating in group discussions.
- Instructors can enter grades, comments, and feedback when viewing Discussions similar to the experience in Wikis Blogs, and Journals.
- Instructors are prompted to save or delete specific Grade Center columns when deleting a Group with gradable Blogs, Journals, Wikis, or Discussion Forums or Threads.
- Instructors navigating away and then back to the Grade Center in one login session are returned to the last scroll point they viewed or graded in the grid.
- When copying content from one course to another, any files attached to an assignment will remain linked to the assignment.

Deadlines Approaching for Winter and Spring 2011 MyClasses Course Requests

If you need a MyClasses course in either the Campus Edition or Learn version – request your courses at

<http://www.salisbury.edu/instructionaldesign/cms/courserequest.html> by the following dates:

- Winter 2011 Deadline: December 15, 2010
- Spring 2011 Deadline: January 14, 2011

What happens if you miss the deadline? We will still create the courses, but will have a waiting period of about three to seven days after the beginning of the semester.

MyClasses Learn Tip



Want a column to represent a negative number in MyClasses Learn? After service pack 2, faculty who try to enter a negative number into a column may be presented with a message to “Error: A numeric value must be entered”. A solution is to convert the primary display to Text. To do this:

- Enter the Grade Center and select the action link to the right of the desired column name.
- Select Edit Column Information
- In section one, scroll down to Primary Display. Select Text.
- Then click Submit.

Teaching & Learning Conference

The program for the first SU Teaching & Learning conference on Thursday, January 20, 2011 is now available at :

<http://www.salisbury.edu/instructionaldesign/tlc/2010program.htm>



Paula Morris, Department of Management and Marketing, will open the conference talking about “Teaching and Learning – When Does it CLICK?” Following, join your colleagues on various topics such as service learning, creative writing, various teaching strategies and modalities, and integrating technology.

Course Migration Help Available in January

January is a wonderful time for faculty to seek assistance in transferring their courses from MyClasses Campus Edition to MyClasses Learn. After attending a Fast Track to MyClasses workshop, faculty can receive development areas for any course in which they need to develop. Appointments can be made throughout January with our Instructional Designers and our Learning Assistants for course conversions to Learn. To setup an appointment, faculty can contact:

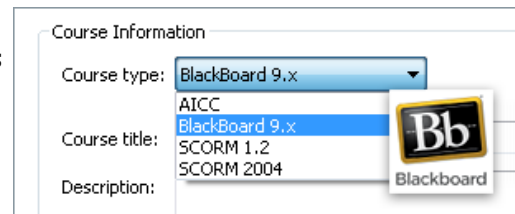
Constance Beckwith – csbeckwith@salisbury.edu or at 410-677-6585

Robin Hoffman – rjhoffman@salisbury.edu or at 410-548-4763

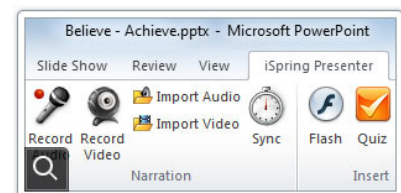
Melissa Thomas – mdthomas@salisbury.edu or at 410-543-6510

iSpring for MyClasses Learn

Faculty who are using iSpring to present their content to students now have a new feature that is available right now. When publishing your video lecture, you can now choose to publish to Blackboard Learn 9.1! iSpring Presenter works as a PowerPoint Add-In. It transforms your PowerPoint into a high end tool for creating engaging and interactive Flash based e-learning courses that can be viewed within MyClasses. You can make your web-enhanced, blended, or fully-online courses more vivid and engaging with iSpring. You can create quizzes with 10 types of questions, record and sync presenter video, add Flash and YouTube videos, import or record new audio narrations, create unique navigation and design with customizable player skins.



Now, with the addition of iSpring inside MyClasses Learn, you can make quizzes inside your e-lectures and have that data directly imported into your Grade Center. You can also track student results and use Question Pools. There is a lot of new functionality that is available. Please contact Robin Hoffman (rjhoffman@salisbury.edu) for more information or a preview.



Faculty Development Studio Improvements



Faculty visit the ID&D Studio throughout the year to attend workshops, get one on one assistance or to use some of the instructional software that is provided. Soon, faculty will notice an improvement in performance as new PCs will be installed by the Spring 2011 semester. The addition of these new PCs also allows ID&D to debut a new Quick Access Workstation. This workstation will be housed near the entrance to the studio (TE-213G) and can be used by faculty who need to quickly print out a document, change a setting in MyClasses or check their email. The computer will have a constant log-in so there will be no need for faculty to wait for the computer to log them in before completing a quick task. Look for the new Quick Access Workstation this Spring!

EDUCAUSE Mid-Atlantic Regional Conference

Melissa Thomas and Robin Hoffman will be presenting at this year's MARC Conference in Baltimore. Our presentation will focus on the Soaring with Online Learning program that we offer. Session Information: At Salisbury University, Soaring with Online Learning is a six-week faculty development program to prepare faculty for designing and delivering a hybrid or online course. The program immerses participants in an online course and guides them to the development of their own hybrid or online course. During this session we will describe how the program was developed, the topics covered during the program, the application process and incentives for faculty, and what future opportunities are planned to follow up after faculty complete the program. The session will take place Friday, Jan 14th, 2011 from 9:30 AM - 10:15 AM in Harborside Ballroom B.

MID-ATLANTIC
REGIONAL CONFERENCE
BALTIMORE | JAN 12 - 14

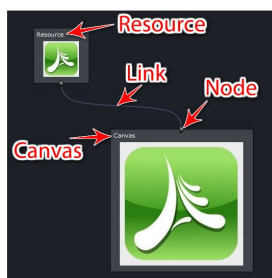
Melissa and Robin will also be presenting a poster: Migrating from WebCT Campus Edition 8 to Blackboard Learn 9. Poster Information: After 10 years of using the WebCT Campus Edition products, Salisbury University is embarking on migrating to the Blackboard Learn 9.1 platform from Campus Edition 8. A pilot group of faculty were trained during summer 2010 and piloted Blackboard Learn during the fall 2010 semester. Full production of Learn 9 is planned for fall 2011. This session will describe the strategies, challenges, and resources required to make such a transition a success. We will share faculty reactions to the differences between the systems including strengths and weaknesses of Learn 9 from the perspective of Campus Edition users.

Information on the event from the Educause website:

This year's conference, "Setting a New Course for the Future," will focus on meeting the changing needs of learners, faculty, researchers, and administrators through innovation—while continuing to support the critical IT infrastructure. We'll emphasize the importance of working together to develop the most effective practices for the future as well as providing strategic leadership from wherever we are in our organizations to achieve our mutual goals. As EDUCAUSE President Diana Oblinger has noted, "the future of higher

Website Of Interest

Wish you had Adobe Photoshop on your computer? Always wanted to edit photos, with a professional look? You can do ALL of that and more with the FREE interactive website, Aviary. This robust site allows users to edit images, capture screen images, create clipart and vector images, add effects, edit audio and create music.



With the millions of users on Aviary, you can share images or keep them private. You can download your content or have it hosted on the cloud, for free. Take a moment to visit their website for some great features you've been missing without having to spend the money to do so!

Winter 2011 ID&D Calendar

Workshop	Date	Time
Getting Started with MyClasses Learn	1/4/2011	10am-12pm
Fast Track to MyClasses Learn	1/4/2011	1pm-3pm
Presenting Content in MyClasses Learn	1/5/2011	10am-12pm
Communicating with Students in MyClasses Learn	1/6/2011	10am-12pm
Making the Most of Discussions in MyClasses Learn	1/6/2011	1pm-3pm
Fast Track to MyClasses Learn	1/7/2011	10am-12pm
Assignments & Groups in MyClasses Learn	1/10/2011	10am-12pm
Fast Track to MyClasses Learn	1/11/2011	10am-12pm
Creating and Managing Assessments in MyClasses Learn	1/11/2011	1pm-3pm
Working with the Grade Center in MyClasses Learn	1/18/2011	1pm-3pm
SU's 1st Teaching and Learning Conference	1/20/2011	See website for detailed sessions.

Office of Instructional Design & Delivery

TETC—Suite 213

www.salisbury.edu/instructionaldesign

www.twitter.com/su_idd

Melissa Thomas 410.543.6510

Robin Hoffman 410.548.4763

Connie Beckwith 410.677.6585

