

Summer 2007 Enrollment Data

**University Analysis,
Reporting, & Assessment**
<http://www.salisbury.edu/iara>

TABLE OF CONTENTS

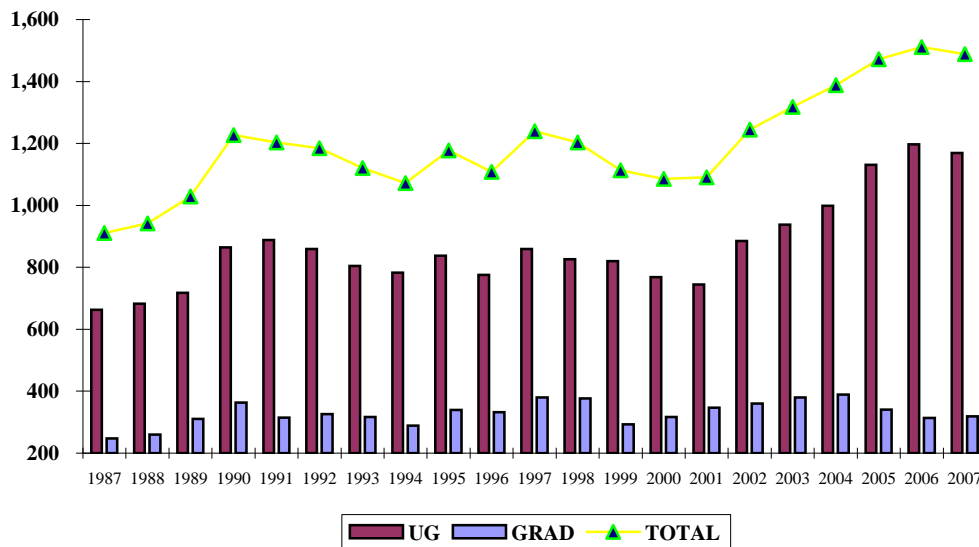
	<u>Page</u>
Headcount, Student Credit Hours, and FTES: Summer Sessions 1987 to 2007.....	1
<i>Summer Enrollment by Career: 1987 – 2007, Chart</i>	1
Enrollment by Sex, Age, & Career: Summer 2007	2
Total Institutional Enrollment by Career & State: Summer 2007	3
Total Enrollment by County of Origin: Summer 2002-2007.....	4
Enrollment in Degree Programs by School, Program, and Race/Ethnicity: Summer 2007	5
Enrollment by School and Program: Summer 2002-2007	6
Total Student Credit Hours and FTES by School, Program, & Course Level: Summer 2007	7
Grade Distribution Summary Report, Undergraduate Level: Summer 2007	8
Grade Distribution, Summary Report, Graduate Level: Summer 2007.....	8
Total SCH and FTES by School and Program: Summer 2003-2007.....	9

**Headcount, Student Credit Hours, and FTES
Summer Sessions
1987 to 2007**

Year	Headcount			Student Credit Hours			FTES*		
	UG	GRAD	TOTAL	UG	GRAD	TOTAL	UG	GRAD	TOTAL
1987	663	248	911	2,816	950	3,766	188	79	267
1988	682	260	942	2,925	983	3,908	195	82	277
1989	718	311	1,029	3,079	1,302	4,381	205	109	314
1990	864	363	1,227	3,488	1,560	5,048	233	130	363
1991	888	315	1,203	3,681	1,242	4,923	245	104	349
1992	859	326	1,185	3,557	1,191	4,748	237	99	336
1993	804	317	1,121	3,281	1,211	4,492	219	101	320
1994	783	289	1,072	3,215	1,026	4,241	214	86	300
1995	837	340	1,177	3,462	1,247	4,709	231	104	335
1996	776	332	1,108	3,272	1,212	4,484	218	101	319
1997	859	380	1,239	3,474	1,588	5,062	232	132	364
1998	826	377	1,203	3,760	1,407	5,167	251	117	368
1999	820	293	1,113	3,761	1,089	4,850	250	91	341
2000	768	317	1,085	3,110	1,170	4,280	207	98	305
2001	744	347	1,091	3,108	1,528	4,636	207	127	334
2002	885	360	1,245	3,682	1,530	5,212	245	127	372
2003	938	380	1,318	3,950	1,757	5,707	263	146	409
2004	999	389	1,388	3,950	1,757	5,707	263	146	409
2005	1,131	341	1,472	4,847	1,472	6,319	323	123	446
2006	1,197	314	1,511	5,292	1,383	6,675	353	115	468
2007	1,169	319	1,488	5,436	1,462	6,898	362	122	484

* The FTES, calculated by dividing by 15 SCHs at Lower and Upper levels, and 12 for Graduate, are based on FA/SP standards.

Summer Enrollment by Career: 1987 - 2007



**Enrollment by Sex, Age, & Career
Summer 2007**

Age Group	MALE	FEMALE	TOTAL BOTH SEXES
Undergraduate			
20 and younger	89	136	225
21 - 24	365	427	792
25 - 29	42	49	91
30 - 34	9	15	24
35 - 39	1	8	9
40 - 49	3	15	18
50 - 59	1	5	6
60 and over	2	2	4
Unknown	-	-	-
Subtotal	512	657	1,169
% Male/Female	44%	56%	100%
Graduate			
20 and younger	-	-	-
21 - 24	23	48	71
25 - 29	23	62	85
30 - 34	13	43	56
35 - 39	9	23	32
40 - 49	7	43	50
50 - 59	5	17	22
60 and over	-	3	3
Unknown	-	-	-
Subtotal	80	239	319
% Male/Female	25%	75%	100%
TOTAL			
20 and younger	89	136	225
21 - 24	388	475	863
25 - 29	65	111	176
30 - 34	22	58	80
35 - 39	10	31	41
40 - 49	10	58	68
50 - 59	6	22	28
60 and over	2	5	7
Unknown	-	-	-
GRAND TOTAL	592	896	1,488
% Male/Female	40%	60%	100%

**Total Institutional
Enrollment by Career & State
Summer 2007**

STATE	UG	GRADUATE	TOTAL
Alabama	-	-	-
Alaska	-	-	-
Arizona	1	-	1
Arkansas	-	-	-
California	-	2	2
Colorado	-	-	-
Connecticut	2	-	2
Delaware	30	12	42
District of Columbia	1	-	1
Florida	4	-	4
Georgia	-	-	-
Hawaii	-	-	-
Idaho	-	-	-
Illinois	-	-	-
Indiana	-	-	-
Iowa	-	-	-
Kansas	-	-	-
Kentucky	-	-	-
Louisiana	-	-	-
Maine	1	-	1
Maryland	1,022	286	1,308
Massachusetts	-	-	-
Michigan	-	-	-
Minnesota	-	-	-
Mississippi	-	-	-
Missouri	-	-	-
Montana	-	-	-
Nebraska	-	-	-
Nevada	-	-	-
New Hampshire	1	-	1
New Jersey	50	-	50
New Mexico	-	1	1
New York	19	3	22
North Carolina	-	-	-
North Dakota	-	-	-
Ohio	1	-	1
Oklahoma	-	-	-
Oregon	-	-	-
Pennsylvania	15	1	16
Rhode Island	-	-	-
South Carolina	-	-	-
South Dakota	-	-	-
Tennessee	-	-	-
Texas	1	-	1
Utah	-	-	-
Vermont	1	-	1
Virginia	13	5	18
Washington	-	-	-
West Virginia	1	-	1
Wisconsin	-	-	-
Wyoming	1	-	1
Puerto Rico	-	-	-
Foreign Countries/NRA	5	9	14
Unknown	-	-	-
TOTAL	1,169	319	1,488
% UG/Graduate	79%	21%	100%

TOTAL ENROLLMENT
by County of Origin
Summer 2002 - 2007

Maryland Counties	2002	2003	2004	2005	2006	2007	1-Yr. Change (%)	5-Yr. Change (%)
Allegany	5	3	2	1	1	2		
Anne Arundel	81	83	77	97	128	113	-11.7%	39.5%
Baltimore	50	52	74	58	68	87	27.9%	74.0%
Baltimore City	3	4	5	6	5	7		
Calvert	9	13	23	23	24	34	41.7%	277.8%
Caroline	39	23	36	30	47	44	-6.4%	12.8%
Carroll	20	22	33	25	38	34	-10.5%	70.0%
Cecil	17	18	17	15	25	24	-4.0%	41.2%
Charles	13	18	22	20	29	29	0.0%	123.1%
Dorchester	61	54	51	57	38	50	31.6%	-18.0%
Frederick	19	36	36	49	47	43	-8.5%	126.3%
Garrett	1	1	2	-	-	-		
Harford	30	30	36	42	49	38	-22.4%	26.7%
Howard	34	37	43	62	63	66	4.8%	94.1%
Kent	4	8	7	8	13	9		
Montgomery	62	78	94	96	119	98	-17.6%	58.1%
Prince George's	28	36	61	50	63	64	1.6%	128.6%
Queen Anne's	22	16	22	35	27	42	55.6%	90.9%
St. Mary's	19	20	18	14	18	20	11.1%	5.3%
Somerset	49	37	40	38	44	36	-18.2%	-26.5%
Talbot	47	36	40	40	27	38	40.7%	-19.1%
Washington	17	20	12	19	23	21	-8.7%	23.5%
Wicomico	325	348	375	402	335	306	-8.7%	-5.8%
Worcester	109	103	133	120	115	103	-10.4%	-5.5%
Unknown County	1	17	-	-	-	-		
Total MD Residents	1,065	1,113	1,259	1,307	1,346	1,308	-2.8%	22.8%
Out-of-State	160	179	116	149	152	166	9.2%	3.8%
Nonresident Aliens	19	14	13	16	13	14	7.7%	-26.3%
Residence Unknown	1	12	-	-	-	-		
Total Nonresidents	180	205	129	165	165	180	9.1%	0.0%
% Non-Maryland	14%	16%	9%	11%	11%	12%	10.8%	-16.3%
Total Combined	1,245	1,318	1,388	1,472	1,511	1,488	-1.5%	19.5%

NOTE: Percent change is not reported for counties sending less than 20 students.

ENROLLMENT IN DEGREE PROGRAMS
by School, Program, and Race/Ethnicity
Summer 2007

School and Degree Program	African-American	American Indian	Asian/Pacific Islander	Hispanic	White	Nonresident Alien	Other/Unknown	TOTAL
Fulton School of Liberal Arts								
Art	2	-	-	2	14	-	1	19
Art (Fine)	-	1	1	2	28	-	5	37
Communication Arts	15	1	4	4	89	1	3	117
Conflict Resolution	2	-	-	-	5	-	-	7
English	4	1	2	1	22	-	2	32
Environmental Issues	-	-	-	-	3	-	-	3
History	-	1	2	1	21	-	4	29
French	-	-	-	-	-	-	1	1
Interdisciplinary Studies	8	-	-	-	18	-	1	27
International Studies	-	-	-	-	3	-	-	3
Music	-	-	-	-	2	-	-	2
Philosophy	-	-	-	1	7	-	-	8
Political Science	2	-	-	-	9	-	-	11
Psychology	3	-	-	1	35	-	3	42
Sociology	2	-	-	-	4	-	-	6
Spanish	-	-	-	-	3	-	-	3
Theatre	-	-	-	-	9	-	-	9
Subtotal	38	4	9	12	272	1	20	356
Henson School of Science & Technology								
Biology	3	-	3	1	38	1	1	47
Chemistry	1	-	-	-	4	-	-	5
CLS/Medical Technology	-	-	-	-	3	-	-	3
Computer Science	-	-	-	-	3	-	1	4
Geography	-	-	-	-	11	-	-	11
Mathematics	-	-	-	-	9	-	-	9
Nursing	4	-	1	-	39	-	2	46
Physics	1	-	-	-	1	-	-	2
Respiratory Therapy	2	-	1	-	4	-	-	7
Subtotal	11	-	5	1	112	1	4	134
Perdue School of Business								
Accounting	4	1	2	2	41	1	2	53
Business Administration	9	-	2	1	59	1	1	73
Economics	-	-	-	-	4	-	-	4
Finance	-	-	3	1	26	1	-	31
Information Systems	2	-	1	-	18	-	1	22
Management	1	-	1	1	63	-	1	67
Marketing	5	-	-	-	77	-	5	87
Subtotal	21	1	9	5	288	3	10	337
Seidel School of Education and Professional Studies								
Athletic Training	1	-	-	1	3	-	-	5
Early Childhood Education	1	-	-	-	28	-	1	30
Elementary Education	6	-	1	1	59	-	2	69
Exercise Science	6	3	-	1	29	-	2	41
Health Education	-	-	-	-	3	-	-	3
Physical Education	3	-	-	-	17	-	-	20
Social Work	7	-	1	-	16	-	1	25
Subtotal	24	3	2	3	155	-	6	193
Undeclared Major	3	-	2	1	12	-	-	18
Non-Degree UG	28	1	4	2	87	-	9	131
TOTAL UNDERGRADUATE	125	9	31	24	926	5	49	1,169
GRADUATE								
Applied Physiology	1	-	-	1	6	-	-	8
Business Administration	-	-	1	2	43	9	-	55
Education	1	-	-	-	39	-	1	41
Education, MA in Teaching	-	-	-	-	15	-	1	16
Education, Math	-	-	-	-	11	-	-	11
Educational Leadership	-	-	-	-	18	-	1	19
English	2	-	-	2	16	-	1	21
Geog Infosystems Public Admin	-	-	-	-	10	-	-	10
History	-	-	-	-	3	-	-	3
Nursing	-	-	-	-	1	-	-	1
Reading Specialist	1	-	-	-	12	-	-	13
Social Work	7	-	1	1	17	-	2	28
Undeclared Major	-	-	-	-	2	-	-	2
Non-Degree Graduate	6	-	-	2	81	-	2	91
TOTAL GRADUATE	18	-	2	8	274	9	8	319

**Enrollment
by School and Program
Summer 2002-2007**

School and Degree Program	2002	2003	2004	2005	2006	2007	1-Yr. Change (%)	3-Year Average ²	5-Yr. Change (%)
Fulton School of Liberal Arts									
Art	31	24	27	24	22	19	-13.6%	22	-38.7%
Art (Fine)	-	7	2	15	21	37	76.2%	24	
Communication Arts	55	82	71	86	106	117	10.4%	103	112.7%
Conflict Analysis/Dispute Res.	1	-	2	6	9	7			
English	16	17	20	33	26	32	23.1%	30	100.0%
Environmental Issues	-	-	-	-	1	3			
French	-	2	1	-	-	1			
General Studies	8	1	-	-	-	-			
History	31	33	30	23	34	29	-14.7%	29	-6.5%
Interdisciplinary Studies	19	11	26	30	26	27	3.8%	28	42.1%
International Studies	-	2	1	5	3	3			
Music	2	1	6	5	7	2			
Philosophy	4	2	4	10	8	8			
Political Science	14	23	20	19	12	11			
Psychology	52	52	44	53	48	42	-12.5%	48	-19.2%
Sociology	-	5	5	2	10	6			
Spanish	5	4	13	16	9	3			
Theatre	2	1	2	1	2	9			
Subtotal	240	267	274	328	344	356	3.5%	343	48.3%
Henson School of Science & Technology									
Biology	42	47	49	31	52	47	-9.6%	43	11.9%
Chemistry	3	4	6	10	8	5			
CLS/Medical Technology	4	4	1	1	1	3			
Computer Science	16	17	8	12	7	4			
Environmental Health	2	3	1	3	3	-			
Geography	7	11	9	9	7	11			
Mathematics	6	7	8	9	6	9			
Nursing	32	48	58	35	48	46	-4.2%	43	43.8%
Physics	4	2	3	2	-	2			
Respiratory Therapy	1	10	10	6	11	7			
Subtotal	117	153	153	118	143	134	-6.3%	132	14.5%
Perdue School of Business									
Accounting	20	28	32	51	49	53	8.2%	51	165.0%
Business Administration	149	99	54	55	95	73	-23.2%	74	-51.0%
Economics	4	-	2	9	6	4			
Finance	-	15	21	37	44	31	-29.5%	37	
Information Systems	37	22	21	70	27	22	-18.5%	40	-40.5%
Management	-	4	51	22	71	67	-5.6%	53	
Marketing	-	16	49	48	56	87	55.4%	64	
Subtotal	210	184	230	292	348	337	-3.2%	326	60.5%
Seidel School of Education and Professional Studies									
Athletic Training	3	3	5	2	7	5			
Early Childhood Education	-	3	10	13	30	30	0.0%	24	
Elementary Education	85	84	67	84	59	69	16.9%	71	-18.8%
English for Spkr of Other Lang.	-	-	-	-	2	-			
Exercise Science	1	20	25	37	44	41	-6.8%	41	4000.0%
Health Education	-	2	4	7	1	3			
Physical Education	38	33	27	43	27	20	-25.9%	30	-47.4%
Social Work	22	22	19	23	12	25			
Subtotal	149	167	157	209	182	193	6.0%	195	29.5%
Undeclared Major	10	10	14	14	20	18			
Non-Degree UG	159	157	171	170	160	131	-18.1%	154	-17.6%
TOTAL UNDERGRADUATE	885	938	999	1,131	1,197	1,169	-2.3%	1,166	32.1%
GRADUATE									
Applied Physiology	-	1	6	12	10	8			
Business Administration	41	37	43	46	45	55	22.2%	49	34.1%
Education	115	88	76	67	52	41	-21.2%	53	-64.3%
Education, MA in Teaching	-	-	14	17	4	16			
Education, Math	-	-	10	8	6	11			
Educational Leadership	13	17	15	-	17	19			
English	25	25	10	21	24	21	-12.5%	22	-16.0%
Geog Infosystems Public Admin	-	-	-	-	-	10			
History	1	4	4	5	4	3			
Nursing	4	4	2	11	-	1			
Psychology	-	1	-	-	-	-			
Reading Specialist	-	-	3	7	10	13			
Social Work	28	19	29	30	12	28	133.3%	23	0.0%
TESOL	-	-	16	-	-	-			
Undeclared Major	-	-	1	-	-	2			
Non-Degree Graduate	133	184	160	117	130	91	-30.0%	113	-31.6%
TOTAL GRADUATE	360	380	389	341	314	319	1.6%	325	-11.4%

¹The criterion for calculating percentages is a program enrollment greater than 20.

²For programs in existence for less than 3 years, the average has not been calculated.

**TOTAL Student Credit Hours and FTES by School, Program & Course Level
Summer 2007**

Program	Student Credit Hours by Course Level			Total SCH	Highlighted Programs % of Total
	Lower (100-200)	Upper (300-400)	Graduate (400G-600)		
Fulton School of Liberal Arts					
Art	99	222	-	321	20.7%
Communication Arts	305	234	-	539	7.8%
Conflict Resolution	18	6	-	24	
Dance	-	6	-	6	
English	162	165	312	639	9.3%
History	246	120	9	375	5.4%
Music	66	-	-	66	
Music-Applied	-	1	-	1	
Political Science	12	3	30	45	
Psychology	45	474	-	519	7.5%
Sociology	-	30	-	30	
Spanish	-	76	-	76	
Theatre	-	21	-	21	
Subtotal	953	1,358	351	2,662	38.6%
Henson School of Science & Technology					
Applied Health Physiology	-	-	27	27	
Biology	208	106	4	318	4.6%
Chemistry	136	3	-	139	
Computer Science	-	3	-	3	
Geography	113	16	28	157	
Geology	68	-	-	68	
Mathematics	294	12	52	358	5.2%
Nursing	-	60	1	61	
Respiratory Therapy	-	5	-	5	
Subtotal	819	205	112	1,136	16.5%
Perdue School of Business					
Accounting	81	69	-	150	
Business Administration	-	267	-	267	
Economics	165	12	-	177	
Finance	-	135	111	246	3.6%
Information Systems	82	24	54	160	
Management	-	222	108	330	4.8%
Marketing	-	216	3	219	
Subtotal	328	945	276	1,549	22.5%
Seidel School of Education & Professional Studies					
Athletic Training	237	116	3	356	5.2%
Education, Administration	-	-	216	216	
Education, Early Childhood	-	30	-	30	
Education, Elementary	-	168	9	177	
Education, General	57	69	210	336	4.9%
Education, Reading	-	-	129	129	
Exercise Science	-	141	-	141	
Social Work	-	10	108	118	
General Studies	-	-	48	48	
Subtotal	294	534	723	1,551	22.5%
GRAND TOTAL	2,394	3,042	1,462	6,898	
All Disciplines	159.6	202.8	121.8	484.2	

NOTE: The FTE calculations, divide by 15 at Lower and Upper levels, and 12 for Graduate, are based on FA/SP standards.

Grade Distribution Summary Report
Undergraduate and Graduate Levels: Summer 2007

DISCIPLINE	No. of Grades	(In Percentages)										
		A	B	C	D	F	I	W	WF	WP	IP	TOTAL
Accounting	27	19%	19%	30%	11%	19%	4%	0%	0%	0%	0%	100%
Art	98	55%	35%	4%	2%	1%	3%	0%	0%	0%	0%	100%
Biology	75	33%	28%	24%	11%	1%	3%	0%	0%	0%	0%	100%
Business Administration	8	13%	0%	0%	0%	0%	88%	0%	0%	0%	0%	100%
Conflict Analysis	8	88%	13%	0%	0%	0%	0%	0%	0%	0%	0%	100%
Chemistry	29	17%	38%	24%	7%	14%	0%	0%	0%	0%	0%	100%
Communication Arts	140	29%	41%	12%	2%	13%	1%	1%	0%	0%	0%	100%
Dance	1	0%	0%	100%	0%	0%	0%	0%	0%	0%	0%	100%
Economics	52	13%	31%	35%	15%	4%	0%	0%	2%	0%	0%	100%
Education, Elementary	17	100%	0%	0%	0%	0%	0%	0%	0%	0%	0%	100%
Education, General	39	69%	18%	8%	0%	5%	0%	0%	0%	0%	0%	100%
English	115	49%	37%	10%	3%	3%	0%	0%	0%	0%	0%	100%
Exercise Science	22	50%	0%	0%	0%	0%	0%	0%	0%	0%	50%	100%
Finance	28	7%	18%	50%	11%	7%	4%	0%	0%	4%	0%	100%
Geography	32	31%	38%	22%	6%	3%	0%	0%	0%	0%	0%	100%
Geology	16	31%	31%	38%	0%	0%	0%	0%	0%	0%	0%	100%
History	99	49%	32%	13%	2%	2%	0%	1%	0%	0%	0%	100%
Information Systems	51	63%	20%	6%	6%	2%	2%	2%	0%	0%	0%	100%
Mathematics	93	28%	27%	29%	2%	12%	0%	1%	0%	1%	0%	100%
Management	57	46%	35%	12%	0%	2%	5%	0%	0%	0%	0%	100%
Marketing	48	13%	33%	40%	10%	0%	4%	0%	0%	0%	0%	100%
Music	21	43%	24%	19%	5%	10%	0%	0%	0%	0%	0%	100%
Physical Education	187	73%	18%	6%	0%	2%	1%	0%	0%	0%	0%	100%
Political Science	5	0%	40%	40%	0%	20%	0%	0%	0%	0%	0%	100%
Psychology	162	46%	26%	19%	2%	6%	0%	0%	0%	1%	0%	100%
Sociology	10	60%	20%	0%	0%	0%	10%	0%	10%	0%	0%	100%
Social Work	2	100%	0%	0%	0%	0%	0%	0%	0%	0%	0%	100%
Spanish	4	75%	25%	0%	0%	0%	0%	0%	0%	0%	0%	100%
Theatre	6	100%	0%	0%	0%	0%	0%	0%	0%	0%	0%	100%
TOTAL UNDERGRADUATE	1,452	45%	28%	16%	4%	5%	2%	0%	0%	0%	1%	100%
DISCIPLINE	No. of Grades	(In Percentages)										
		A	B+	B	C+	C	D	F	I	IP	Other	TOTAL
Applied Physiology	8	100%	0%	0%	0%	0%	0%	0%	0%	0%	0%	100%
Biology	1	0%	0%	100%	0%	0%	0%	0%	0%	0%	0%	100%
Educational Leadership	87	100%	0%	0%	0%	0%	0%	0%	0%	0%	0%	100%
Education, General	98	92%	3%	2%	0%	2%	0%	0%	1%	0%	0%	100%
Education, Reading	32	97%	0%	3%	0%	0%	0%	0%	0%	0%	0%	100%
English	72	88%	6%	7%	0%	0%	0%	0%	0%	0%	0%	100%
Finance	33	27%	12%	24%	9%	15%	12%	0%	0%	0%	0%	100%
Geography	7	71%	0%	14%	0%	14%	0%	0%	0%	0%	0%	100%
History	1	100%	0%	0%	0%	0%	0%	0%	0%	0%	0%	100%
Information Systems	17	76%	6%	18%	0%	0%	0%	0%	0%	0%	0%	100%
Management	35	91%	9%	0%	0%	0%	0%	0%	0%	0%	0%	100%
Math	34	88%	6%	6%	0%	0%	0%	0%	0%	0%	0%	100%
Physical Education	1	100%	0%	0%	0%	0%	0%	0%	0%	0%	0%	100%
Political Science	9	22%	0%	78%	0%	0%	0%	0%	0%	0%	0%	100%
Social Work	29	59%	17%	10%	0%	0%	0%	0%	0%	14%	0%	100%
TOTAL GRADUATE	464	84%	5%	7%	1%	2%	1%	0%	0%	1%	0%	100%

Note: I = Incomplete, IP = In-progress, W = Withdrawal, WP = Withdrawal Passing, WF = Withdrawal Failing .

**TOTAL Student Credit Hours and FTES by School and Program
Summer 2003-2007**

Program	2003	2004	2005	2006	2007	1-Yr. Change	3-Yr. Avg.
Fulton School of Liberal Arts							
Anthropology	-	-	33	27	-		
Art	163	299	301	354	321	-9.3%	325
Communication Arts	309	326	276	416	539	29.6%	410
Conflict Resolution	-	3	9	9	24	166.7%	14
Dance	7	1	-	3	6	100.0%	3
English	549	703	633	678	639	-5.8%	650
German	-	9	-	13	-		
History	315	369	273	432	375	-13.2%	360
Interdisciplinary Studies	-	-	3	-	-		
Modern Foreign Languages	108	6	-	6	-		
Music	-	21	18	21	66	214.3%	35
Music-Applied	3	2	3	-	1		
Philosophy	27	-	6	-	-		
Political Science	3	9	15	3	45	1400.0%	21
Psychology	288	329	340	409	519	26.9%	423
Social Science	9	15	6	6	-		
Sociology	42	54	66	12	30	150.0%	36
Spanish	-	155	169	78	76	-2.6%	108
Theatre	-	12	-	13	21	61.5%	11
Subtotal	1,823	2,313	2,151	2,480	2,662	7.3%	2,431
Henson School of Science & Technology							
Applied Health Physiology	3	21	-	36	27	-25.0%	21
Biology	352	457	415	363	318	-12.4%	365
Chemistry	164	149	12	186	139	-25.3%	112
Computer Science	11	6	20	3	3	0.0%	9
Geography	126	75	74	34	157	361.8%	88
Geology	76	64	48	100	68	-32.0%	72
Mathematics	358	370	363	375	358	-4.5%	365
Nursing	71	47	64	54	61	13.0%	60
Physics	64	3	120	48	-		
Respiratory Therapy	7	7	2	4	5	25.0%	4
Subtotal	1,232	1,199	1,118	1,203	1,136	-5.6%	1,152
Perdue School of Business							
Accounting	33	90	165	123	150	22.0%	146
Business Administration	72	60	171	242	267	10.3%	227
Economics	66	105	87	111	177	59.5%	125
Finance	159	222	213	252	246	-2.4%	237
Information Systems	95	62	79	162	160	-1.2%	134
Management	198	270	312	336	330	-1.8%	326
Marketing	126	171	174	177	219	23.7%	190
Subtotal	749	980	1,201	1,403	1,549	10.4%	1,384
Seidel School of Education & Professional Studies							
Athletic Training	9	-	-	-	356		
Education, Administration	120	117	84	96	216	125.0%	132
Education, Early Childhood	-	-	-	18	30	66.7%	16
Education, Elementary	198	72	168	267	177	-33.7%	204
Education, General	666	777	582	522	336	-35.6%	480
Education, Master of Arts	48	57	3	36	-		
Education, Reading	222	195	96	120	129	7.5%	115
Education, Secondary	36	15	3	-	-		
Exercise Science	108	147	207	84	141	67.9%	144
Health	36	45	54	-	-		
Physical Education	301	384	408	327	-		
Physical Education, Teacher Ed	-	20	52	22	-		
Social Work	108	3	192	97	118	21.6%	136
General Studies	51	-	48	-	48		
Subtotal	1,903	1,832	1,897	1,589	1,551	-2.4%	1,679
GRAND TOTAL	5,707	6,324	6,367	6,675	6,898	3.3%	6,647
All Disciplines-FTES	409.7	451.0	449.8	468.1	484.2	3.4%	467.4

NOTE: The FTE calculations, divide by 15 at Lower and Upper levels, and 12 for Graduate, are based on FA/SP standards.