



SUMMER 2006 Enrollment Data



University Analysis,
Reporting, & Assessment
<http://www.salisbury.edu/iara>

TABLE OF CONTENTS

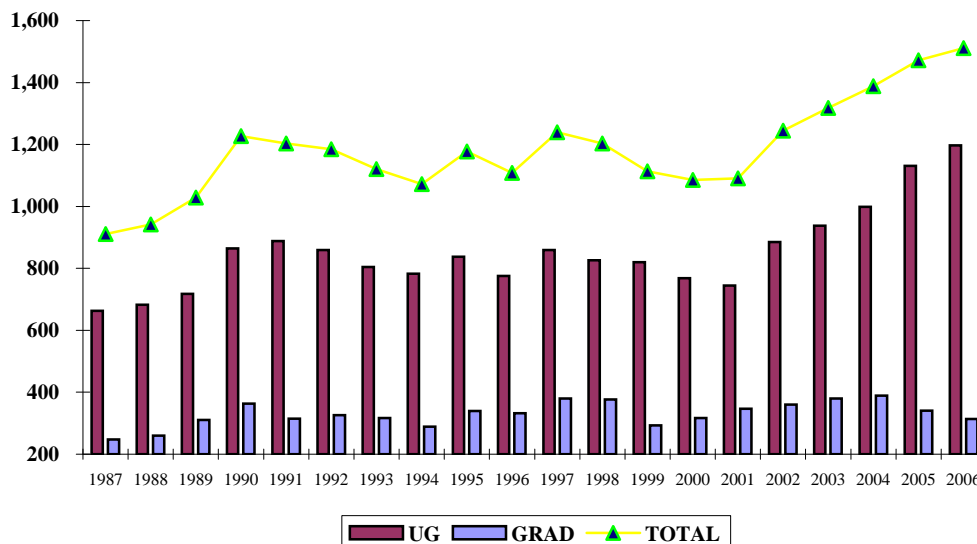
	<u>Page</u>
Headcount, Student Credit Hours, and FTES: Summer Sessions 1987 to 2006.....	1
<i>Summer Enrollment by Career: 1987 – 2006, Chart</i>	1
Enrollment by Sex, Age, & Career: Summer 2006	2
Total Institutional Enrollment by Career & State: Summer 2006	3
Total Enrollment by County of Origin: Summer 2001-2006.....	4
Enrollment in Degree Programs by School, Program, and Race/Ethnicity: Summer 2006	5
Enrollment by School and Program: Summer 2001-2006.....	6
Total Student Credit Hours and FTES by School, Program, & Course Level: Summer 2006.....	7
Grade Distribution Summary Report, Undergraduate Level, Summer 2006.....	8
Grade Distribution, Summary Report, Graduate Level, Summer 2006.....	8

Headcount, Student Credit Hours, and FTES Summer Sessions 1987 to 2006

Year	Headcount			Student Credit Hours			FTES*		
	UG	GRAD	TOTAL	UG	GRAD	TOTAL	UG	GRAD	TOTAL
1987	663	248	911	2,816	950	3,766	188	79	267
1988	682	260	942	2,925	983	3,908	195	82	277
1989	718	311	1,029	3,079	1,302	4,381	205	109	314
1990	864	363	1,227	3,488	1,560	5,048	233	130	363
1991	888	315	1,203	3,681	1,242	4,923	245	104	349
1992	859	326	1,185	3,557	1,191	4,748	237	99	336
1993	804	317	1,121	3,281	1,211	4,492	219	101	320
1994	783	289	1,072	3,215	1,026	4,241	214	86	300
1995	837	340	1,177	3,462	1,247	4,709	231	104	335
1996	776	332	1,108	3,272	1,212	4,484	218	101	319
1997	859	380	1,239	3,474	1,588	5,062	232	132	364
1998	826	377	1,203	3,760	1,407	5,167	251	117	368
1999	820	293	1,113	3,761	1,089	4,850	250	91	341
2000	768	317	1,085	3,110	1,170	4,280	207	98	305
2001	744	347	1,091	3,108	1,528	4,636	207	127	334
2002	885	360	1,245	3,682	1,530	5,212	245	127	372
2003	938	380	1,318	3,950	1,757	5,707	263	146	409
2004	999	389	1,388	3,950	1,757	5,707	263	146	409
2005	1,131	341	1,472	4,847	1,472	6,319	323	123	446
2006	1,197	314	1,511	5,292	1,383	6,675	353	115	468

* The FTES, calculated by dividing by 15 SCHs at Lower and Upper levels, and 12 for Graduate, are based on FA/SP standards.

Summer Enrollment by Career: 1987 - 2006



**Enrollment by Sex, Age, & Career
Summer 2006**

Age Group	MALE	FEMALE	TOTAL BOTH SEXES
Undergraduate			
20 and younger	102	155	257
21 - 24	382	410	792
25 - 29	46	32	78
30 - 34	15	13	28
35 - 39	4	9	13
40 - 49	4	17	21
50 - 59	1	3	4
60 and over	3	-	3
Unknown	1	-	1
Subtotal	558	639	1,197
% Male/Female	47%	53%	100%
Graduate			
20 and younger	-	-	-
21 - 24	16	45	61
25 - 29	24	74	98
30 - 34	13	23	36
35 - 39	13	29	42
40 - 49	7	40	47
50 - 59	4	19	23
60 and over	3	4	7
Unknown	-	-	-
Subtotal	80	234	314
% Male/Female	25%	75%	100%
TOTAL			
20 and younger	102	155	257
21 - 24	398	455	853
25 - 29	70	106	176
30 - 34	28	36	64
35 - 39	17	38	55
40 - 49	11	57	68
50 - 59	5	22	27
60 and over	6	4	10
Unknown	1	-	1
GRAND TOTAL	638	873	1,511
% Male/Female	42%	58%	100%

**Total Institutional
Enrollment by Career & State
Summer 2006**

STATE	UG	GRADUATE	TOTAL
Alabama	-	-	-
Alaska	-	-	-
Arizona	1	-	1
Arkansas	-	-	-
California	-	-	-
Colorado	-	-	-
Connecticut	-	-	-
Delaware	22	19	41
District of Columbia	1	-	1
Florida	4	-	4
Georgia	-	-	-
Hawaii	-	-	-
Idaho	-	-	-
Illinois	-	-	-
Indiana	-	-	-
Iowa	-	-	-
Kansas	-	-	-
Kentucky	-	-	-
Louisiana	-	-	-
Maine	-	-	-
Maryland	1,072	274	1,346
Massachusetts	1	-	1
Michigan	-	-	-
Minnesota	-	-	-
Mississippi	-	-	-
Missouri	-	-	-
Montana	-	-	-
Nebraska	-	-	-
Nevada	-	-	-
New Hampshire	-	-	-
New Jersey	36	2	38
New Mexico	-	-	-
New York	20	1	21
North Carolina	2	-	2
North Dakota	-	-	-
Ohio	-	-	-
Oklahoma	-	-	-
Oregon	-	-	-
Pennsylvania	14	5	19
Rhode Island	-	-	-
South Carolina	1	-	1
South Dakota	-	-	-
Tennessee	-	-	-
Texas	-	-	-
Utah	-	-	-
Vermont	-	-	-
Virginia	13	7	20
Washington	-	-	-
West Virginia	2	-	2
Wisconsin	-	-	-
Wyoming	1	-	1
Puerto Rico	-	-	-
Foreign Countries/NRA	7	6	13
Unknown	-	-	-
TOTAL	1,197	314	1,511
% UG/Graduate	79%	21%	100%

TOTAL ENROLLMENT
by County of Origin
Summer 2001 - 2006

Maryland Counties	2001	2002	2003	2004	2005	2006	1-Yr.	5-Yr.
							Change (%)	Change (%)
Allegany	1	5	3	2	1	1	-	-
Anne Arundel	56	81	83	77	97	128	32.0%	128.6%
Baltimore	48	50	52	74	58	68	17.2%	41.7%
Baltimore City	4	3	4	5	6	5	-	-
Calvert	12	9	13	23	23	24	4.3%	100.0%
Caroline	35	39	23	36	30	47	56.7%	34.3%
Carroll	14	20	22	33	25	38	52.0%	171.4%
Cecil	21	17	18	17	15	25	66.7%	19.0%
Charles	15	13	18	22	20	29	45.0%	93.3%
Dorchester	49	61	54	51	57	38	-33.3%	-22.4%
Frederick	18	19	36	36	49	47	-4.1%	161.1%
Garrett	-	1	1	2	-	-	-	-
Harford	33	30	30	36	42	49	16.7%	48.5%
Howard	32	34	37	43	62	63	1.6%	96.9%
Kent	4	4	8	7	8	13	-	-
Montgomery	56	62	78	94	96	119	24.0%	112.5%
Prince George's	25	28	36	61	50	63	26.0%	152.0%
Queen Anne's	21	22	16	22	35	27	-22.9%	28.6%
St. Mary's	12	19	20	18	14	18	28.6%	50.0%
Somerset	32	49	37	40	38	44	15.8%	37.5%
Talbot	33	47	36	40	40	27	-32.5%	-18.2%
Washington	10	17	20	12	19	23	21.1%	130.0%
Wicomico	263	325	348	375	402	335	-16.7%	27.4%
Worcester	94	109	103	133	120	115	-4.2%	22.3%
Unknown County	1	1	17	-	-	-	-	-
Total MD Residents	889	1,065	1,113	1,259	1,307	1,346	3.0%	51.4%
Out-of-State	180	160	179	116	149	152	2.0%	-15.6%
Nonresident Aliens	22	19	14	13	16	13	-18.8%	-40.9%
Residence Unknown	-	1	12	-	-	-	-	-
Total Nonresidents	202	180	205	129	165	165	-	-18.3%
% Non-Maryland	19%	14%	16%	9%	11%	11%		
Total Combined	1,091	1,245	1,318	1,388	1,472	1,511	2.6%	38.5%

NOTE: Percent change is not reported for counties sending less than 20 students.

ENROLLMENT IN DEGREE PROGRAMS
by School, Program, and Race/Ethnicity
Summer 2006

School and Degree Program	African-American	American Indian	Asian/Pacific Islander	Hispanic	White	Nonresident Alien	Other/Unknown	TOTAL
Fulton School of Liberal Arts								
Art	2	-	2	-	15	-	3	22
Art (Fine)	1	1	1	1	16	1	-	21
Communication Arts	13	-	1	4	86	-	2	106
Conflict Resolution	1	-	1	-	6	1	-	9
English	3	-	1	-	21	-	1	26
Environmental Issues	-	-	-	-	1	-	-	1
History	1	1	1	1	28	-	2	34
Interdisciplinary Studies	3	-	-	1	20	-	2	26
International Studies	-	-	-	-	3	-	-	3
Music	-	-	-	-	7	-	-	7
Philosophy	-	-	-	-	8	-	-	8
Political Science	1	-	1	-	9	-	1	12
Psychology	5	-	2	-	37	-	4	48
Sociology	3	-	-	-	7	-	-	10
Spanish	1	-	-	2	6	-	-	9
Theatre	-	-	-	-	2	-	-	2
Subtotal	34	2	10	9	272	2	15	344
Henson School of Science & Technology								
Biology	3	-	3	1	40	1	4	52
Chemistry	1	-	-	-	7	-	-	8
CLS/Medical Technology	-	-	-	-	1	-	-	1
Computer Science	1	-	-	-	5	-	1	7
Environmental Health	-	-	-	-	3	-	-	3
Geography	-	-	-	-	7	-	-	7
Mathematics	-	-	-	-	5	-	1	6
Nursing	3	-	1	1	41	-	2	48
Physics	-	-	-	-	-	-	-	-
Respiratory Therapy	2	-	1	-	7	-	1	11
Subtotal	10	-	5	2	116	1	9	143
Perdue School of Business								
Accounting	4	-	2	4	36	1	2	49
Business Administration	11	2	3	2	76	-	1	95
Economics	1	-	-	1	4	-	-	6
Finance	4	-	-	2	33	2	3	44
Information Systems	7	-	2	1	14	1	2	27
Management	5	-	4	4	54	-	4	71
Marketing	6	-	1	1	45	-	3	56
Subtotal	38	2	12	15	262	4	15	348
Seidel School of Education and Professional Studies								
Athletic Training	2	-	-	-	3	-	2	7
Early Childhood Education	1	-	1	1	24	-	3	30
Elementary Education	1	-	-	2	53	-	3	59
English for Spkr of Other Lang.	-	-	-	-	2	-	-	2
Exercise Science	3	1	3	-	35	-	2	44
Health Education	-	-	-	-	-	-	1	1
Physical Education	8	-	-	-	19	-	-	27
Social Work	2	-	-	-	9	-	1	12
Subtotal	17	1	4	3	145	-	12	182
Undeclared Major	4	-	1	1	14	-	-	20
Non-Degree UG	33	1	5	5	105	-	11	160
TOTAL UNDERGRADUATE	136	6	37	35	914	7	62	1,197
GRADUATE								
Applied Physiology	2	-	-	-	8	-	-	10
Business Administration	-	-	1	1	36	6	1	45
Education	3	-	-	1	48	-	-	52
Education, MA in Teaching	1	-	-	-	2	-	1	4
Education, Math	-	-	-	-	6	-	-	6
Education, School Admin.	2	-	-	-	15	-	-	17
English	3	-	-	1	20	-	-	24
History	2	-	-	-	2	-	-	4
Reading Specialist	-	-	-	-	10	-	-	10
Social Work	2	-	-	1	9	-	-	12
Non-Degree Graduate	6	-	-	2	112	-	10	130
TOTAL GRADUATE	21	-	1	6	268	6	12	314

**Enrollment
by School and Program
Summer 2001-2006**

School and Degree Program	2001	2002	2003	2004	2005	2006	1-Yr. Change (%)	3-Year Average ²	5-Yr. Change (%)
Fulton School of Liberal Arts									
Art	14	31	24	27	24	22	-9.1%	24	57.1%
Art (Fine)	-	-	7	2	15	21	28.6%	13	
Communication Arts	69	55	82	71	86	106	18.9%	88	53.6%
Conflict Analysis/Dispute Res.	2	1	-	2	6	9		6	
English	12	16	17	20	33	26	-26.9%	26	116.7%
Environmental Issues	-	-	-	-	-	1			
French	-	-	2	1	-	-			
History	14	31	33	30	23	34	32.4%	29	142.9%
General Studies	24	8	1	-	-	-			
Interdisciplinary Studies	-	19	11	26	30	26	-15.4%	27	
International Studies	-	-	2	1	5	3		3	
Music	6	2	1	6	5	7		6	
Philosophy	6	4	2	4	10	8		7	
Political Science	9	14	23	20	19	12		17	
Psychology	32	52	52	44	53	48	-10.4%	48	50.0%
Sociology	1	-	5	5	2	10		6	
Spanish	7	5	4	13	16	9		13	
Theatre	-	2	1	2	1	2		2	
Subtotal	196	240	267	274	328	344	4.7%	315	75.5%
Henson School of Science & Technology									
Biology	39	42	47	49	31	52	40.4%	44	33.3%
Chemistry	5	3	4	6	10	8		8	
CLS/Medical Technology	4	4	4	1	1	1		1	
Computer Science	6	16	17	8	12	7		9	
Environmental Health	-	2	3	1	3	3		2	
Geography	8	7	11	9	9	7		8	
Mathematics	6	6	7	8	9	6		8	
Nursing	28	32	48	58	35	48	27.1%	47	71.4%
Physics	3	4	2	3	2	-		2	
Respiratory Therapy	1	1	10	10	6	11		9	
Subtotal	100	117	153	153	118	143	17.5%	138	43.0%
Perdue School of Business									
Accounting	28	20	28	32	51	49	-4.1%	44	75.0%
Business Administration	133	149	99	54	55	95	42.1%	68	-28.6%
Economics	2	4	-	2	9	6		6	
Finance	-	-	15	21	37	44	15.9%	34	
Information Systems	52	37	22	21	70	27	-159.3%	39	-48.1%
Management	-	-	4	51	22	71	69.0%	48	
Marketing	-	-	16	49	48	56	14.3%	51	
Subtotal	215	210	184	230	292	348	16.1%	290	61.9%
Seidel School of Education and Professional Studies									
Athletic Training	-	3	3	5	2	7		5	
Early Childhood Education	-	-	3	10	13	30	56.7%	18	
Elementary Education	67	85	84	67	84	59	-42.4%	70	-11.9%
English for Spkr of Other Lang.	-	-	-	-	-	2		1	
Exercise Science	-	1	20	25	37	44	15.9%	35	
Health Education	-	-	2	4	7	1		4	
Physical Education	31	38	33	27	43	27	-59.3%	32	-12.9%
Social Work	11	22	22	19	23	12	-91.7%	18	9.1%
Subtotal	109	149	167	157	209	182	-14.8%	183	67.0%
Undeclared Major	10	10	10	14	14	20	30.0%	16	100.0%
Non-Degree UG	114	159	157	171	170	160	-6.3%	167	40.4%
TOTAL UNDERGRADUATE	744	885	938	999	1,131	1,197	5.5%	1,109	60.9%
GRADUATE									
Applied Physiology	-	-	1	6	12	10		9	
Business Administration	28	41	37	43	46	45	-2.2%	45	60.7%
Education	105	115	88	76	67	52	-28.8%	65	-50.5%
Education, MA in Teaching	-	-	-	14	17	4		12	
Education, Math	-	-	-	10	8	6		8	
Education, School Admin.	18	13	17	15	-	17		11	
English	19	25	25	10	21	24	12.5%	18	26.3%
History	4	1	4	4	5	4		4	
Nursing	11	4	4	2	11	-		4	
Psychology	-	-	1	-	-	-		-	
Reading Specialist	-	-	-	3	7	10		7	
Social Work	-	28	19	29	30	12	-150.0%	24	
TESOL	-	-	-	16	-	-		-	
Undeclared Major	-	-	-	1	-	-		-	
Non-Degree Graduate	162	133	184	160	117	130	10.0%	136	-19.8%
TOTAL GRADUATE	347	360	380	389	341	314	-8.6%	348	-9.5%

¹The criterion for calculating percentages is a program enrollment greater than 20.

²For programs in existence for less than 3 years, the average has not been calculated.

**TOTAL Student Credit Hours and FTES by School, Program & Course Level
Summer 2006**

Program	Student Credit Hours by Course Level			Total SCH	Highlighted Programs % of Total
	Lower (100-200)	Upper (300-400)	Graduate (400G-600)		
Fulton School of Liberal Arts					
Anthropology	27	-	-	27	
Art	216	135	3	354	22.9%
Communication Arts	237	179	-	416	6.2%
Conflict Resolution	-	9	-	9	
English	162	189	327	678	10.2%
German	6	2	5	13	
History	309	105	18	432	6.5%
Modern Foreign Languages	6	-	-	6	
Music	-	21	-	21	
Music-Applied	-	-	-	-	
Philosophy	-	-	-	-	
Political Science	-	3	-	3	
Psychology	108	301	-	409	6.1%
Social Science	-	6	-	6	
Sociology	-	12	-	12	
Spanish	27	51	-	78	
Theatre	-	13	-	13	
Subtotal	1,098	1,026	353	2,477	37.1%
Henson School of Science & Technology					
Biology	235	119	9	363	5.4%
Chemistry	177	9	-	186	
CLS/Medical Technology	-	-	-	-	
Computer Science	-	3	-	3	
Exercise Science	-	84	-	84	
Geography	28	6	-	34	
Geology	100	-	-	100	
Mathematics	363	-	12	375	5.6%
Nursing	-	54	-	54	
Physics	48	-	-	48	
Respiratory Therapy	-	4	-	4	
Subtotal	951	279	21	1,251	18.7%
Perdue School of Business					
Accounting	84	39	-	123	
Business Administration	-	233	9	242	
Economics	111	-	-	111	
Finance	-	177	75	252	3.8%
Information Systems	125	34	3	162	
Management	-	240	96	336	5.0%
Marketing	-	171	6	177	
Subtotal	320	894	189	1,403	21.0%
Seidel School of Education & Professional Studies					
Applied Health Physiology	-	-	36	36	
Athletic Training	-	-	-	-	
Dance	-	3	-	3	
Education, Administration	-	-	96	96	
Education, Early Childhood	-	18	-	18	
Education, Elementary	-	252	15	267	
Education, General	-	93	429	522	7.8%
Education, Master of Arts	-	-	36	36	
Education, Reading	-	-	120	120	
Education, Secondary	-	-	-	-	
Exercise Science	-	-	-	-	
General Studies	-	-	-	-	
Health	-	-	-	-	
Physical Education	183	138	6	327	4.9%
Physical Education, Teacher Ed	-	22	-	22	
Social Work	-	15	82	97	
Subtotal	183	541	820	1,544	23.1%
GRAND TOTAL	2,552	2,740	1,383	6,675	
FTES by Course Level					
All Disciplines	170.1	182.7	115.3	468.1	

NOTE: The FTE calculations, divide by 15 at Lower and Upper levels, and 12 for Graduate, are based on FA/SP standards.

GRADE DISTRIBUTION SUMMARY REPORT
Spring 2006
UNDERGRADUATE LEVEL

DISCIPLINE	No. of Grades	(in percentages)										
		A	B	C	D	F	I	S	W	PS	Other	TOTAL*
Accounting	11	45%	45%	9%	-	-	-	-	-	-	-	100%
Art	59	54%	37%	3%	-	3%	2%	-	-	-	-	100%
Biology	166	25%	17%	6%	1%	2%	46%	-	1%	1%	1%	100%
Business Administration	25	88%	8%	-	-	-	0%	-	4%	-	-	100%
CADR	2	100%	-	-	-	-	-	-	-	-	-	100%
Chemistry	84	5%	19%	17%	5%	1%	51%	-	2%	-	-	100%
Communication Arts	97	41%	37%	12%	2%	2%	-	-	4%	-	1%	100%
Computer Science	5	40%	-	-	-	-	-	-	-	60%	-	100%
Dance	3	33%	33%	33%	-	-	-	-	-	-	-	100%
Economics	22	23%	27%	50%	-	-	-	-	-	-	-	100%
Education, Elementary	62	73%	16%	3%	-	-	-	-	-	8%	-	100%
Education, General	43	63%	9%	7%	-	-	-	-	12%	9%	-	100%
Education, Phys. Ed., K-12	3	67%	33%	-	-	-	-	-	-	-	-	100%
Education, Secondary	10	50%	50%	-	-	-	-	-	-	-	-	100%
English	82	32%	40%	12%	4%	6%	-	-	5%	-	1%	100%
Exercise Science	19	95%	5%	-	-	-	-	-	-	-	-	100%
Finance	20	45%	15%	25%	15%	-	-	-	-	-	-	100%
Geography	55	13%	27%	20%	2%	-	-	-	2%	-	36%	100%
Geology	42	7%	17%	19%	5%	-	-	-	2%	-	50%	100%
Health	12	58%	25%	17%	-	-	-	-	-	-	-	100%
History	104	32%	36%	23%	4%	6%	-	-	-	-	-	100%
Information Systems	36	56%	28%	8%	3%	3%	-	-	-	-	3%	100%
Mathematics	85	25%	36%	21%	5%	6%	-	-	5%	2%	-	100%
Management	35	49%	29%	17%	3%	3%	-	-	-	-	-	100%
Marketing	41	56%	27%	10%	5%	2%	-	-	-	-	-	100%
Modern Languages	11	73%	27%	-	-	-	-	-	-	-	-	100%
Nursing	22	95%	-	-	-	-	-	-	5%	-	-	100%
Physical Education	105	57%	27%	11%	1%	3%	-	-	-	1%	-	100%
Philosophy	9	89%	11%	-	-	-	-	-	-	-	-	100%
Physics	38	16%	13%	18%	3%	-	50%	-	-	-	-	100%
Political Science	1	-	-	-	-	-	-	-	-	100%	-	100%
Psychology	108	27%	24%	31%	8%	6%	-	-	2%	1%	1%	100%
Respiratory Therapy	5	100%	-	-	-	-	-	-	-	-	-	100%
Sociology	13	46%	46%	8%	-	-	-	-	-	-	-	100%
Social Science	2	100%	-	-	-	-	-	-	-	-	-	100%
Social Work	6	33%	33%	-	-	-	-	-	-	17%	17%	100%
Spanish	20	45%	20%	20%	10%	-	5%	-	-	5%	-	105%
Theatre	11	73%	18%	9%	-	-	9%	-	-	-	-	109%
TOTAL UNDERGRADUATE	1,474	39%	25%	14%	3%	3%	12%	-	2%	1%	-	100%

GRADUATE LEVEL

DISCIPLINE	No. of Grades	(In percentages)										
		A	B	C	D	F	I	S	W	PS	Other	TOTAL
Applied Physiology	2	100%	-	-	-	-	-	-	-	-	-	100%
Art	1	100%	-	-	-	-	-	-	-	-	-	100%
Biology	1	100%	0%	-	-	-	-	-	-	-	-	100%
Education, Administration	38	84%	13%	-	-	-	-	-	3%	-	-	100%
Education, Elementary	2	-	100%	-	-	-	-	-	-	-	-	100%
Education, General	207	91%	7%	1%	-	0%	0%	-	-	-	-	100%
Education, MAT	15	67%	33%	-	-	-	-	-	-	-	-	100%
Education, Reading	85	96%	2%	-	-	1%	-	-	-	-	-	100%
English	112	84%	15%	-	-	-	-	-	1%	-	-	100%
Finance	33	21%	39%	36%	-	-	-	-	-	-	3%	100%
General Studies	2	0%	-	-	-	-	50%	-	50%	-	-	100%
History	8	100%	-	-	-	-	-	-	-	-	-	100%
Management	31	55%	39%	-	-	-	-	-	-	-	6%	100%
Marketing	1	100%	-	-	-	-	-	-	-	-	-	100%
Math	29	97%	-	-	-	-	-	-	-	-	3%	100%
Music Applied	1	100%	-	-	-	-	-	-	-	-	-	100%
Nursing	4	25%	25%	-	-	-	50%	-	-	-	-	100%
Psychology	1	-	100%	-	-	-	-	-	-	-	-	100%
Social Work	26	31%	38%	8%	-	-	-	-	-	23%	-	100%
Spanish	1	-	-	-	-	-	-	-	-	100%	-	100%
Theatre	1	100%	-	-	-	-	-	-	-	-	-	100%
TOTAL GRADUATE	601	80%	14%	3%	-	0%	-	-	1%	1%	1%	100%