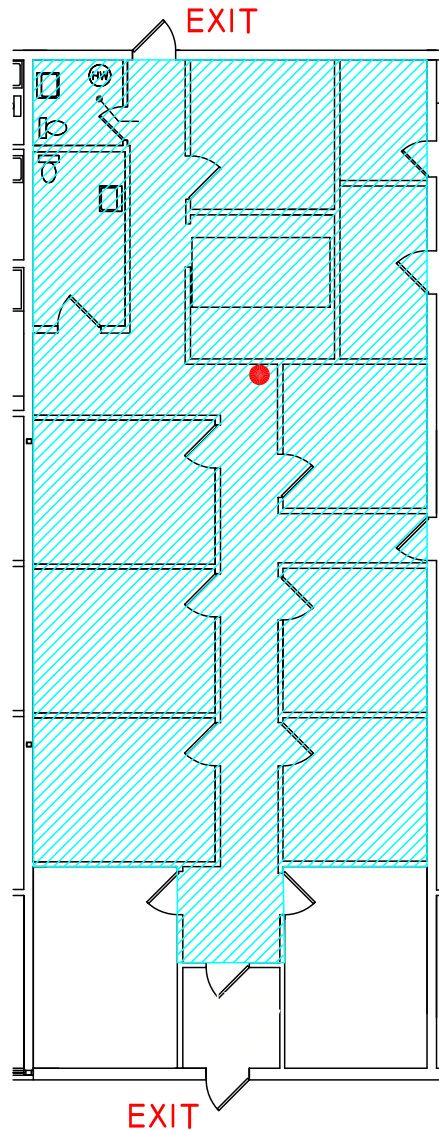


EMERGENCY INFORMATION

LEGEND	
●	FIRE EXTINGUISHER
▨	SHELTER IN PLACE



FIRE EMERGENCY

WHEN ALARM SOUNDS, TURN OFF ELECTRICAL EQUIPMENT, CLOSE THE DOOR AND WALK TO THE NEAREST EXIT. MOVE 500 FEET AWAY FROM THE BUILDING AND REMAIN THERE UNTIL NOTIFIED "ALL CLEAR". PLEASE REMEMBER THAT YOU MIGHT NOT BE ABLE TO RE-ENTER THE BUILDING.

SEVERE WEATHER

WHEN NOTIFIED OF SEVERE WEATHER, SEEK SHELTER IN AREAS WITHOUT GLASS. THESE AREAS ARE ILLUSTRATED WITH BLUE LINES. REMAIN THERE UNTIL NOTIFIED "ALL CLEAR" BY CAMPUS POLICE, A BUILDING MANAGER, OR THE LOCAL WEATHER STATION. DO NOT GO OUTDOORS UNTIL THE WEATHER EVENT HAS SUBSIDED.

MEDICAL EMERGENCY

IF A MEDICAL EMERGENCY OCCURS, CALL 911 AND PROVIDE AS MUCH INFORMATION AS POSSIBLE TO THE OPERATOR. STAY ON THE LINE UNTIL THE OPERATOR INDICATES YOU MAY HANG UP. THE 911 OPERATOR WILL CALL UNIVERSITY POLICE AND INFORM THEM OF THE EMERGENCY.

ALLENWOOD - SUITE 400