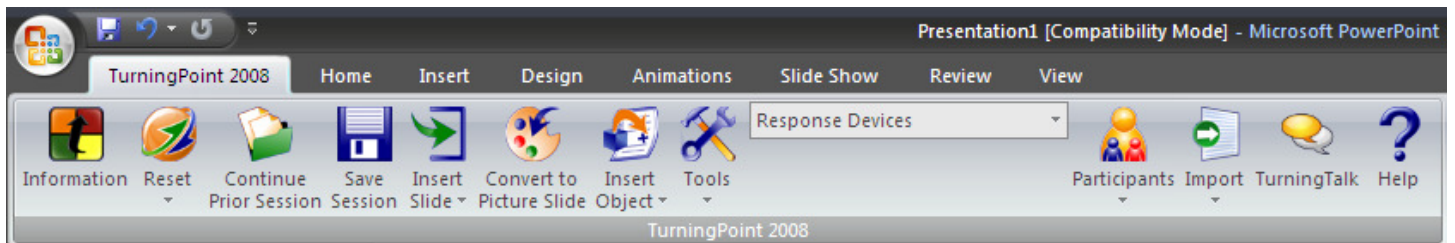


# TurningPoint Quick Sheet: Creating a TurningPoint Slide

TurningPoint slides can be used to poll, generate discussion, assess the audience and immediately view the results of the slide.

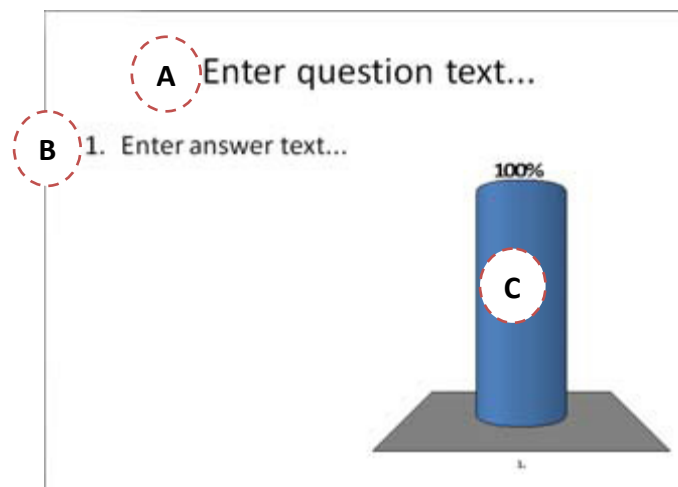
To create a basic TurningPoint Slide:

1. Click **Insert Slide** on the TurningPoint Ribbon.



2. Select the desired **chart slide type**.

3. TurningPoint inserts the new slide into the presentation, there are three components:



**A** • **Question Area** - Where the question being asked is typed.

**B** • **Answer Area** - Where up to ten answer choices for the question are typed.

**C** • **Results Area** - Where the results of the slide are displayed.