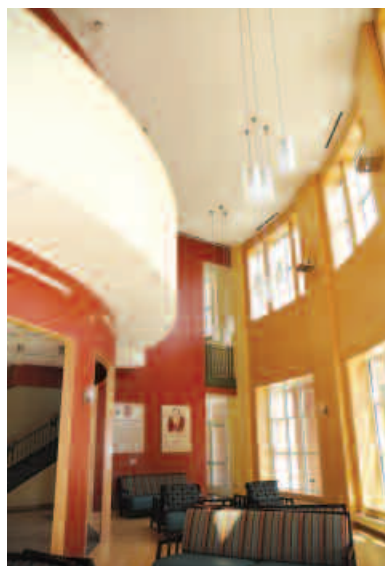


## Letter from the President

This fall will be a great time to visit campus. Not only is it the start of a new academic year, Homecoming Weekend and a time for class reunions, but there's a renewed enthusiasm that is clearly palpable.

When students return, they provide such energy for our entire campus community. Many alumni can remember that similar feeling of excitement upon returning to school from summer break to reconnect with friends and continue on their academic journey. It's still happening with each new academic year and it's something that energizes all faculty and staff.

This fall also will be a special time for the Salisbury University campus as we improve upon our physical facilities. We will officially celebrate the grand opening of the new Teacher Education and Technology Center (TETC). This



monumental occasion has been years in the making. The TETC, a 165,000-square-foot facility, will be a showcase building for education in Maryland and the entire mid-Atlantic region. With state-of-the-art technology, it will be the new home for the Samuel W. and Marilyn C. Seidel School of Education and Professional Studies.

We will also break ground this summer on a new parking garage, to be located on the corner of Bateman and Wayne streets. These new parking spaces will come in handy as we will break ground on the new Perdue School of Business building in less than a year. And plans are well underway for new residence halls on the main campus.

I hope you return to campus this fall. Ours is a campus on the move with a growing reputation as *A Maryland University of National Distinction*. I am proud to serve as your president and look forward to seeing you this fall.

Janet Dudley-Eshbach  
President, Salisbury University



Volume 37 • 2008

### PRESIDENT

Dr. Janet Dudley-Eshbach

### VICE PRESIDENT OF UNIVERSITY ADVANCEMENT

Dr. Rosemary M. Thomas

### DIRECTOR OF ALUMNI RELATIONS AND ANNUAL GIVING

Jason E. Curtin '98

### DIRECTOR OF MARKETING AND PUBLIC RELATIONS

Susan Maxwell Eagle

### COPY EDITOR

Christine B. Smith M'02

### ALUMNI RELATIONS AND ANNUAL GIVING STAFF

Kerrie Bunting '92

Sandy Griswold

Melinda B. Khazeh

### CONTRIBUTING PHOTOGRAPHERS

Visual Images Coordinator/Photographer: Kathy D. Pusey '86

Jason E. Curtin '98

Wes Demrest

Todd Dudek

Susan Maxwell Eagle

Joey Gardner

Samuel T. Gibson IV '95

Jim Seip

### CONTRIBUTING WRITERS

Dr. Alice Bahr

Dr. Harry Basehart

Richard Crumbacker '84

Dr. Janet Dudley-Eshbach

Candice Evans

Dr. Francis Kane

Titus Ledbetter III

Amy Gilbert '11

Janene Holzberg

Dwight "Duke" W. Marshall Jr. '88

### STAFF WRITERS

Sam Atkinson '00

Jayne Block '97, M'99

Kerrie Bunting '92

Paul Cantrell

Richard Culver '70

Jason E. Curtin '98

Katie Martin

Kim Nechay M'03

Jason Rhodes

Christine B. Smith M'02

Dr. Rosemary M. Thomas

Amy Waters

### CLASS NOTES EDITOR

Ashley Hill '08

The *SU Magazine* is published annually for alumni and friends of Salisbury University by the Office of Alumni Relations and Annual Giving in conjunction with the Office of Public Relations, with the generous support of the Salisbury University Foundation.

Please send comments, news and address changes to:

Office of Alumni Relations and Annual Giving

Salisbury University

1120 Camden Avenue

Salisbury, MD 21801-6837

call 410-543-6042 (toll free 888-729-2586)

or e-mail [alumni@salisbury.edu](mailto:alumni@salisbury.edu)

**We invite your comments, criticisms, compliments, corrections and contributions...**

Please write to:

Office of Alumni Relations and Annual Giving, Editor, SUMagazine, 1120 Camden Avenue, Salisbury University, Salisbury, MD 21801-6837.

Or e-mail us at [alumni@salisbury.edu](mailto:alumni@salisbury.edu).

The editor reserves the right to publish letters of interest.

Salisbury University has a strong institutional commitment to diversity and is an Equal Opportunity/Affirmative Action employer, providing equal employment and educational opportunities to all those qualified, without regard to race, color, religion, national origin, sex, age, marital status, disability or sexual orientation.

