

THE GUERRIERI STUDENT UNION

Your student center at Salisbury University





FUN FACTS ABOUT GSU

- 72,718 usable square feet
- Hours of Operation:
 - Normal Hours: Monday - Saturday 8am – Midnight, Sunday Noon – Midnight
 - Summer Hours: Monday – Friday 8am – 4:30pm
- 12 Reservable Rooms
- 9 Reservable Distribution areas (Indoor and Outdoor)
- 2 Eateries (Chick-fil-A & Cool Beans)
- The GSU facilitates over 6,500 events/ meetings
per calendar year

THE WICOMICO ROOM

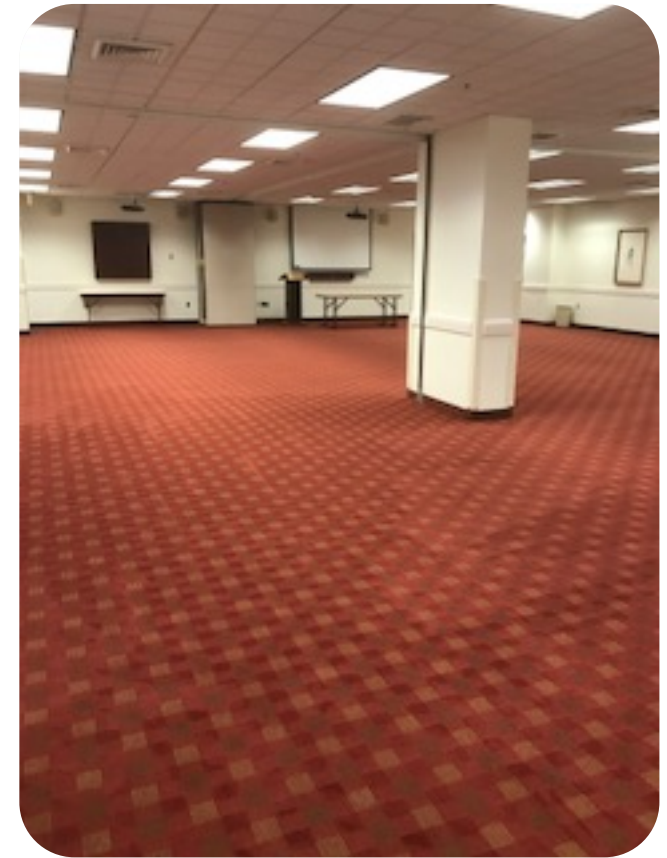


- Max 400 theater/ open room
- Stage is housed in GSU
- NEW podiums housed in GSU
- GSU provides Rectangular Tables 6'x30"
- Round Tables must be ordered from Support Services
- Use of Wicomico Room Booth must be ordered through ETS



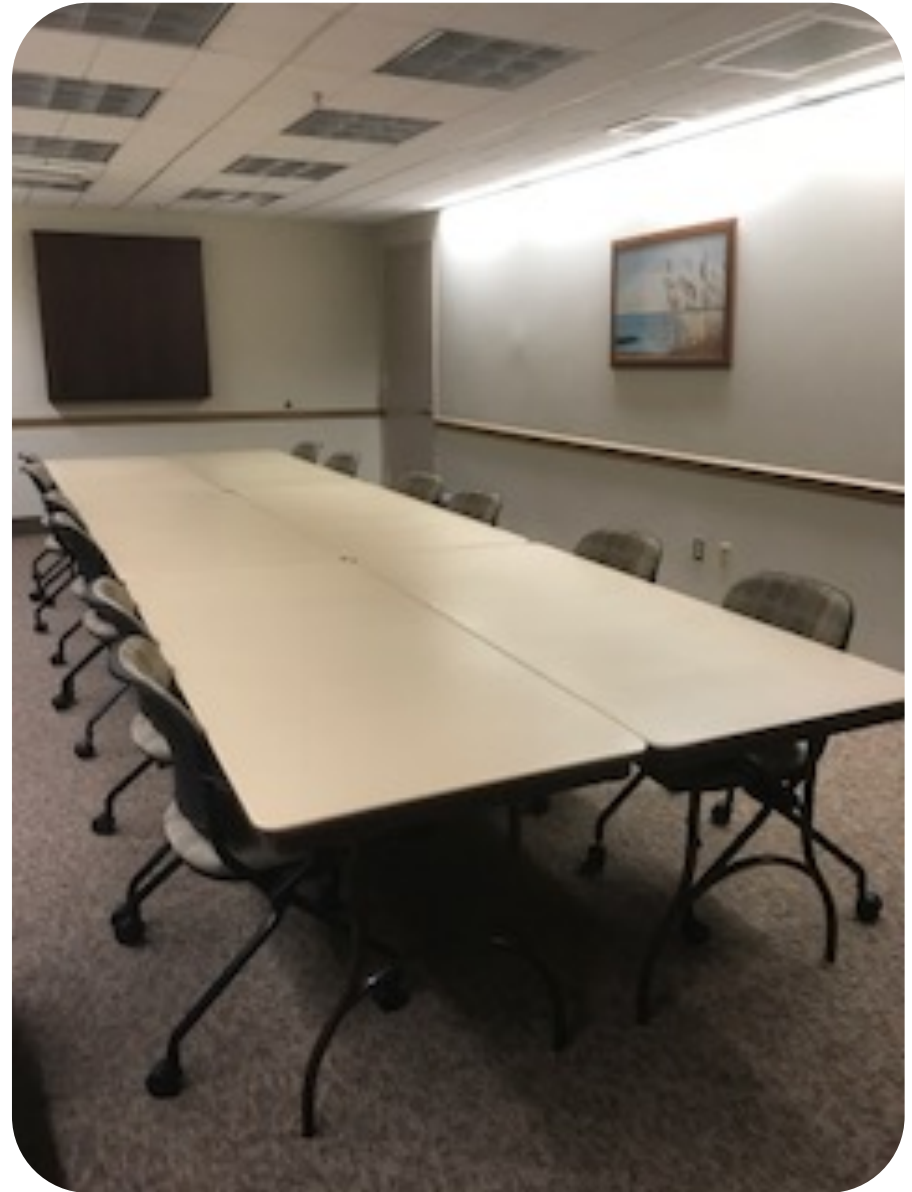
NANTICOKE A/B/C

- Can be booked/split into three rooms, two rooms or open to one room.
- Tables in Nanticoke 6'x18"
- Choptank opens into Nanticoke and could be utilized as well.
- ETS has two screens and two projectors in the room.
- There is a white board in each of the Nanticoke areas.
- Podium in room.
- If open to one large room, microphone is recommended.



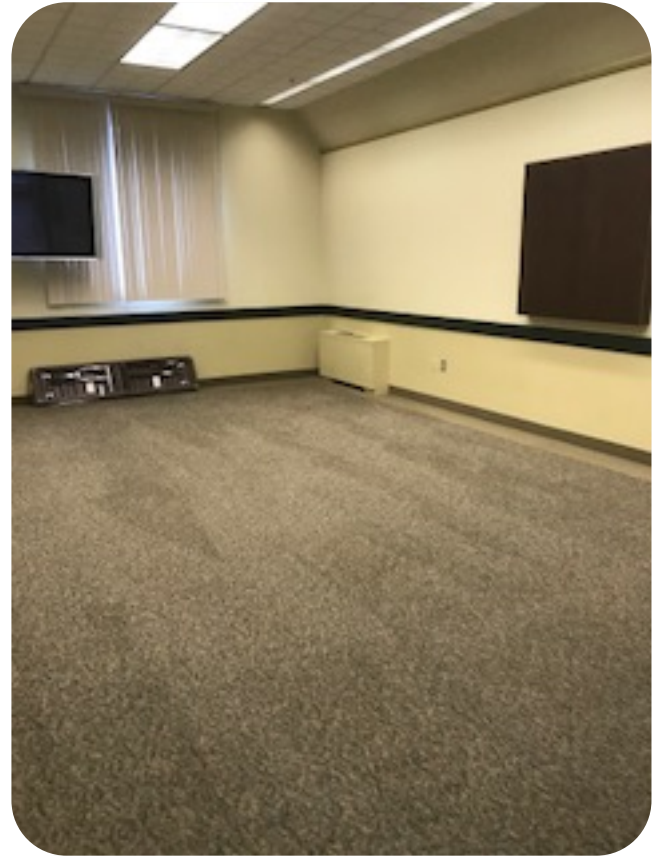
MANOKIN

- Conference Style Set-up
- 6 tables 8' x 30"
- Max 22 at Conference Table
- White Board in room
- Two Entrances



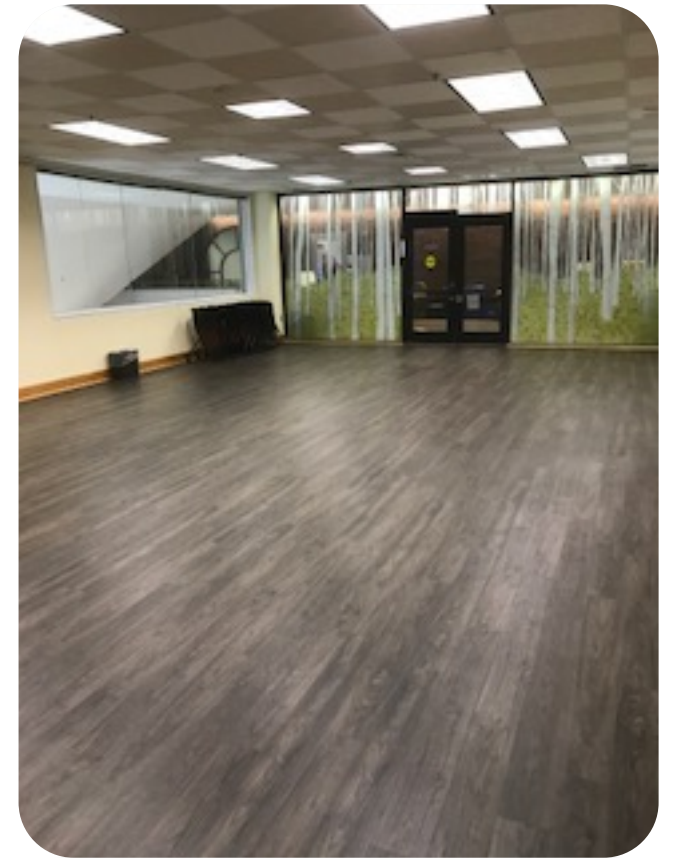
POCOMOKE

- 42 inch TV monitor.
- Rectangular Tables 6'x18"
- ETS to set-up laptop (must order)
- White Board in room
- Max 48 Theater Style



ROOM 206

- Studio Space
 - Yoga
 - Dance
 - Kick Boxing
 - Stepping
 - Max 40



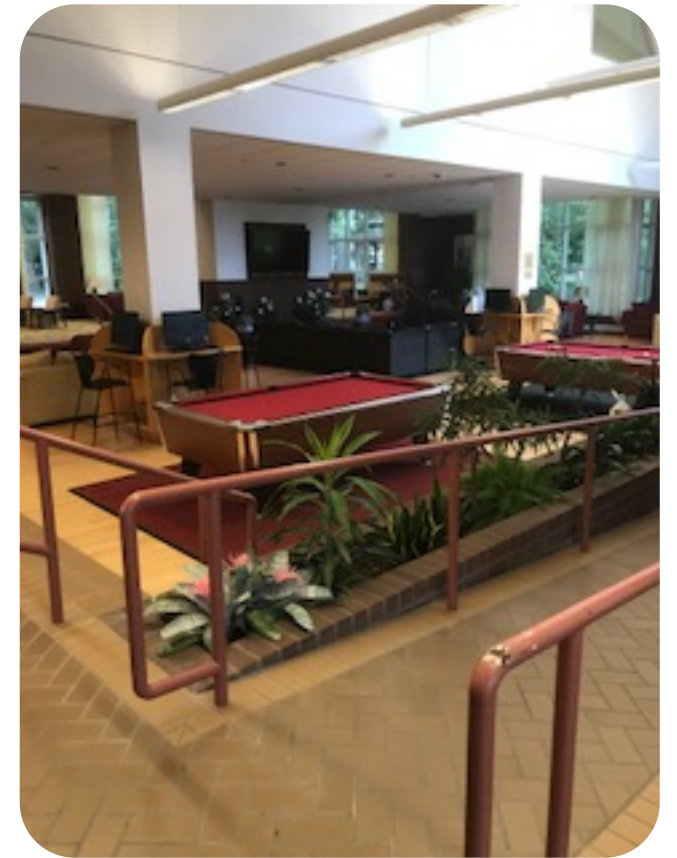
FIRESIDE LOUNGE

- The carpeted area
- Fire place
- 2 Pianos
- Relaxing atmosphere



HARDWOOD LOUNGE

- The hardwood floor area
- 72 inch TV
- 2 Pool Tables
- Ping Pong table
- Large U-Shaped Couch
 - Usually booked in conjunction with Fireside Lounge



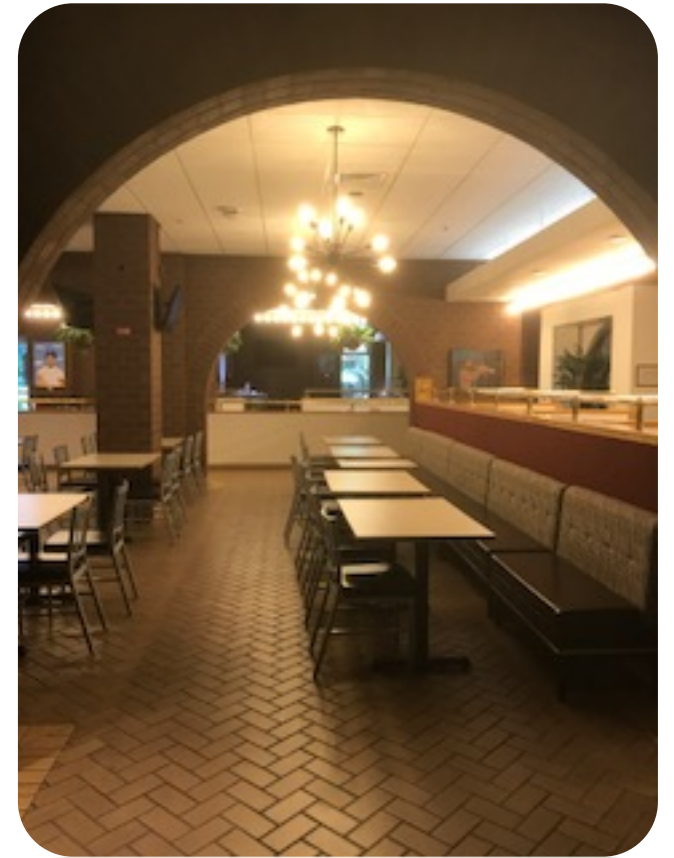
COMMUTER LOUNGE



- Large TV
- Lounge Chairs
- High Top Table Seating
- Community Bulletin Board

GULL'S NEST SEATING AREA

- Seating Area outside of Chick-fil-A
- 5 televisions
- Updated lighting, fans, seating areas.
- Max 144



EATERIES



ADDITIONAL AREAS

- Patio areas
- Lounge Areas
- Print Station
- Distribution Areas
- Gaming Area
 - Foosball Table
 - 2 Ping Pong Tables
 - 2 Pool Tables
- Vending Area



- If ordering catering in any room at GSU. You MUST put in the notes tables for catering. They do not come automatically.
- Noise in the GSU Rooms, Lounges, etc must be kept to a reasonable level during office hours.
- Diagrams can be provided by me or you can draw one.
- Do you need a registration table?
- Wi-Fi – Individual Accounts can be set up at the Information Desk. For groups please submit an ETS ticket.
- When in doubt, Call me 😊 Ext 66486 or email SAROGERS@Salisbury.edu

ADDITIONAL INFORMATION

