

Mission: Cultural Enrichment

Salisbury University's Office of Cultural Affairs and Museum Programs is one of the largest unified arts centers in Maryland. From acclaimed theatre productions to a regional symphony to a historical archive to a world-class museum facility, the University serves to enrich the cultural lives of its students as well as the surrounding community.

Professional Edge

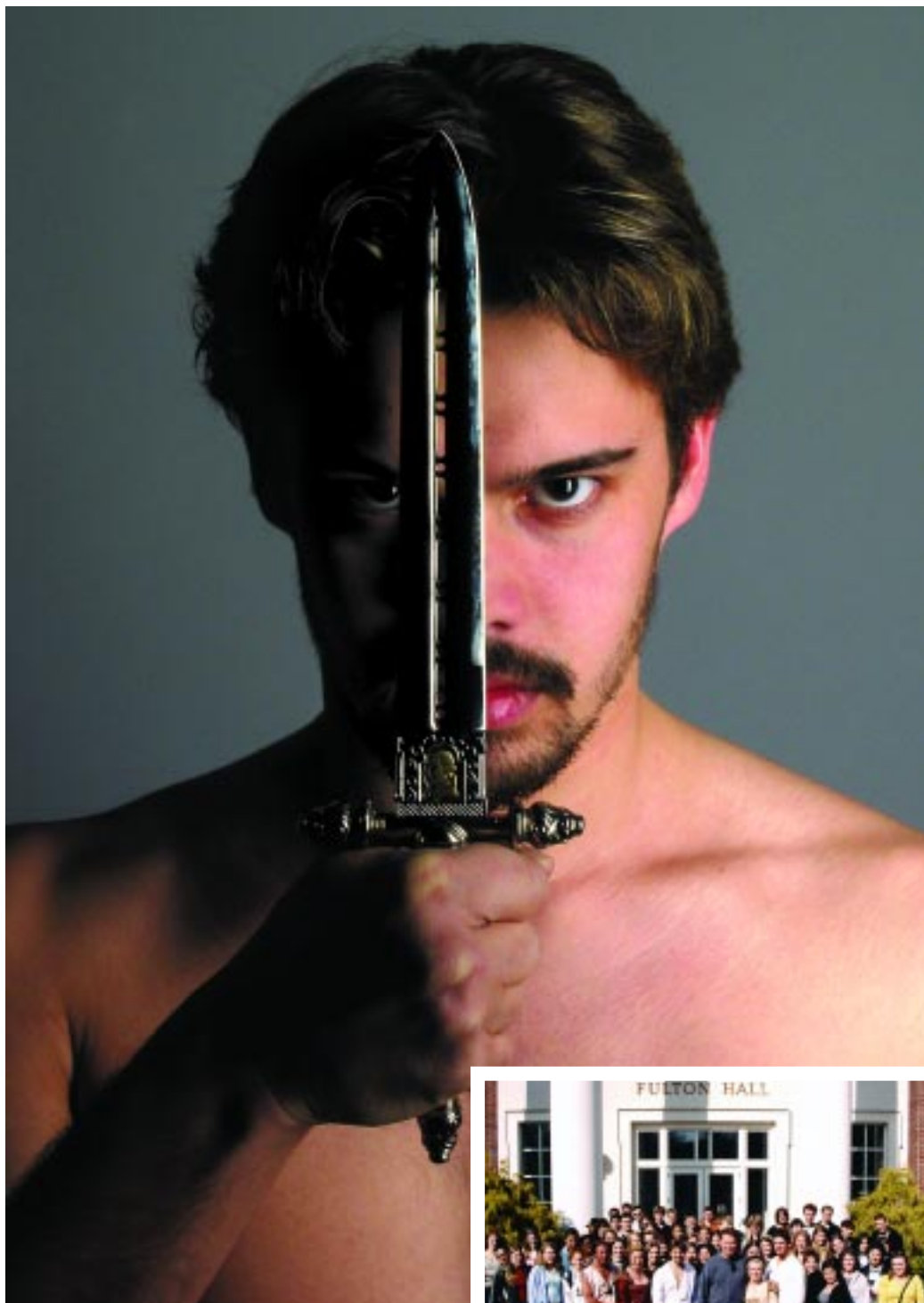
Many University organizations bring experts on campus to share their talents with our students. For example, the theatre works with international directors, the Dance Company welcomes guest choreographers and the Writers-on-the-Shore Series hosts many acclaimed writers, including Pulitzer Prize winning poet Stephen Dunn.

A World Of Opportunities

Variety is key when organizers plan cultural events for the academic year. Every semester there is a cultural events series that explores all facets of a given topic, such as "Peace and Conflict." Those wanting to combine their love of the environment and art find the Ward Museum of Wildfowl Art the perfect place to see world-caliber exhibits and learn about carving through its workshops and seminars. In addition, the Student Office of Activity Planning (SOAP) brings to campus first-run movies, comedians and other entertainers and hosts an annual outdoor rock festival at the local Shorebird Stadium.

Regional Heritage

For nearly 20 years, the Edward H. Nabb Research Center for Delmarva History and Culture has been dedicated to preserving the uniqueness of the history and culture of the Delmarva Peninsula. Among its many events that bring local history to life, the Nabb Center has hosted a series of workshops on Native American culture and several lectures ranging from the Maryland Campaign of 1862 to regional archaeology.



▲ A Future Star Is Born

Senior Justin Gallo (above) took full advantage of a professional director when he starred in the Bobbi Biron Theatre Program's production of *Hamlet*. Fresh from London's Globe Theater, Charles Duff gave SU's aspiring actors the benefit



of his years of directing experience. Honing his skills, Gallo caught the eye of the University of Florida's graduate theatre program which awarded him a scholarship valued at \$70 thousand.



▲ World-Class Carving

Every year thousands of the world's best carvers take part in the largest and most prestigious competition in the world. Drawing some 14,000 visitors and more than 1,000 carvers and artists, Salisbury University's Ward Museum hosts the



Ward World Championship Wildfowl Carving Competition every spring. The 33-year-old competition provides a showcase for carvers to display their artistic and technical talents and offers over \$100,000 in prizes to the most talented.

Latin Inspirations

For the fall 2002 cultural events series, the University celebrated Latin American culture with events that included a concert by classical guitarist Manuel Barrueco, an evening of innovative dance from Ballet Hispanico (left) and an exhibit of paintings and prints by Colombian-born artist Félix Ángel.



Cultural Opportunities

Salisbury University offers a wealth of cultural possibilities to its students and the community:

- Bobbi Biron Theatre Program
- Children's Theatre Ensemble
- Dance Company
- International Film Series
- Nabb Research Center for Delmarva History and Culture
- Salisbury Symphony Orchestra
- University Galleries
- Ward Museum of Wildfowl Art
- WSCL Radio
- Writers-on-the-Shore



30 Years Of Film

In May, SU celebrated the 30th anniversary of one of the most respected film journals in the United States, *Literature/Film Quarterly*. In the early 1970s, founders and editors, Dr. James Welsh and Dr. Thomas Erskine of the English Department (pictured with Fulton School Dean Timothy O'Rourke, right), were inspired to create a publication that would showcase their love for movies and adaptations. The publication began at a time when universities nationwide were beginning to boost film programs, and huge information databases such as the Internet were still decades away.