

# PANORAMA

Salisbury University's  
Guide to Cultural &  
Educational Events  
FALL 2020



**Fall Student Dance Showcase**  
Join the talented SU Dance Company for their premiere virtual performance • p. 7



**Sea Gull Century Virtual Ride**  
Cyclists can create routes in their own local areas and share photos with fellow cyclists via social media • p. 8

## Democracy Across the Disciplines

Take part in this political series with topics on the upcoming election • p. 4



## Not Just a Pretty Face

Learn about the role women played in the beauty industry in this virtual exhibit • p. 9

# welcome

## A Message from the President

Let me begin by saying I miss you. We miss you. We miss having you in our audiences. We miss having you on our campus. We miss having you cheer on our teams.



SU has a longstanding tradition of providing cultural and educational events that bring the campus and community together. These events help us connect with each other, expand our horizons and stretch our minds. So many things have changed during this time, but others have not. Our performers still want to perform. Great ideas still need to be shared. Pieces of art are still waiting to be seen. Like the spark of inspiration, the creation and sharing of art and ideas still find a way even in this unprecedented time.

As such, Salisbury University continues to present cultural and academic events – though not at the robust levels we’ve enjoyed in the past – and the publication of *Panorama* continues. However, what is different is that, due to the impact of COVID-19, all public events are shifted to a virtual format, with some of them requiring pre-registration. Instead of a calendar format, we’ve grouped events by sponsor to make it easier to understand the unique way you can interact with their offerings. For several events, we can’t tell you exactly when you’ll see them because we are still trying to figure out the best way to share our talents and thoughts.

We kick off our season with the Student Research Showcase, at which our best and brightest present the amazing activities they’ve pursued over the break. Our students in the Music, Theatre and Dance Department continue to put on great shows – you’ll just have to watch them from the comfort of your own home. I’m excited to see our student recitals, as well as the return of our senior student art exhibits (including our newest alumni who weren’t able to show in the spring). Speaking of exhibits, between the SU Art Galleries, Nabb Center and Ward Museum (which is now open to the public), there is a whole world of art and creation to explore from your computer screen. And throughout the semester, we invite you to delve into the nuances of the upcoming presidential election with our annual Democracy Across the Disciplines series. There is still something for everyone at SU, even if it all feels a little (or a lot) different.

Think of this issue of *Panorama* as a promise. I promise that we are still here producing amazing works. And I promise our students that there are still audiences for their talent. When this is all in the past and we can come together again, this time that we have spent virtually will be an important reminder of how vital it is to maintain the connection between the campus and our beloved community.

Be well and I hope to see you soon!

A handwritten signature in black ink, appearing to read 'C. Wight'.

Charles A. Wight  
President, Salisbury University



Josh Dennis &  
Sara Miller Voice  
Recital • p. 7



## What You Need to Know

### Everything Is Virtual & Can Change!

All events highlighted in this issue are available in a virtual format. As public response to COVID-19 evolves, please understand all information provided here is subject to change.

Visit SU's website for the most recent campus-related information: [www.salisbury.edu/coronavirus](http://www.salisbury.edu/coronavirus).

### Virtual Event Pre-Registration

Most events require pre-registration so you can receive a secure link to view them. For many, this is done through Eventbrite by creating a free, online account, which will provide links and reminders for the events for which you've registered. Instructions on how to register for Eventbrite are included on the Events page of the SU website at [www.salisbury.edu/events](http://www.salisbury.edu/events).

### Campus Buildings Are Closed To The Public

All buildings at SU are closed to the public except by invitation. The health and safety of our students are central to our mission, and as such, the University is limiting access to campus to our students and the faculty and staff necessary to educate them and provide integral services. Please note that the Guerrieri Academic Commons is among those buildings closed to the public, including the Nabb Research Center for Delmarva History and Culture, which is providing several offerings to the community virtually (see page 9). While exterior portions of the campus remain open, only those needing to be at SU for academic, residential or work purposes are encouraged to be on campus.

### Invited Guests

Those coming to campus as invited guests must follow SU's COVID-19 screening and face mask policies (see highlights below) and maintain a distance of at least 6 feet between themselves and others at all times. Visitors must display a daily visitor badge, available from the screening locations listed below. Invited guests planning to park on campus at any time must register for a printable permit at least 24 hours in advance of their visit at [www.salisbury.edu/parking](http://www.salisbury.edu/parking).

### Screening Policy

Any visitors invited to campus must go through the University's screening process. You must check in at the following locations to be screened and receive a visitor badge, which must be worn while on campus.

- Monday-Friday
  - Holloway Hall Entrance: 8 a.m. - 4:30 p.m.
  - Guerrieri Student Union Info Desk: 8 a.m. - 4:30 p.m.
  - Maintenance Building Room 111: 8 a.m. - 3:30 p.m.
  - Bookstore - Commons Lower Level: 8:30 a.m. - 4:30 p.m.
  - SU Art Galleries | Downtown

By Appointment Only: [www.suartgalleries.org/visit](http://www.suartgalleries.org/visit)

- Any Time – SU Police Department, East Campus Complex, Power Street (walk up, ring buzzer at door)

Please note: These times and locations may change as needed during the semester. For the most up-to-date information, visit [www.salisbury.edu/coronavirus](http://www.salisbury.edu/coronavirus).

### Face Mask Policy

Invited guests must wear masks indoors at all times. Masks also must be worn outdoors when appropriate physical distancing (at least 6 feet) is not possible. This policy extends to all of the University campus and other property owned, leased or controlled by the University. Failure to comply with this policy may result in limitation or denial of access to University facilities and services. Some exceptions and exemptions do exist. Those, along with the full policy can be found at [www.salisbury.edu/news/SU-Masking-Policy.pdf](http://www.salisbury.edu/news/SU-Masking-Policy.pdf).

## Other Ways to Stay Connected with SU

### Celebrate Our Diversity

Recognizing the inclusive nature of exposing campus and community members to diverse events and ideas, SU's Cultural Affairs Office has moved under the umbrella of the Office of Diversity and Inclusion (ODI). Once travel and gathering restrictions are lifted, look for the return of the University's celebrated Cultural Affairs offerings. In the meantime, stay tuned for fall programming from the ODI available to all.



### Explore SU

Know a student who is interested in attending SU? Currently, our Admissions team is able to offer limited daily tours to individual, registered families. You also can take a virtual tour, chat remotely with counselors, and view information sessions with current students, parents and faculty online. Learn more at [www.salisbury.edu/visit](http://www.salisbury.edu/visit). The Admissions team is on hand from 8 a.m.- 4:30 p.m. Monday-Friday to answer any questions you may have: [admissions@salisbury.edu](mailto:admissions@salisbury.edu) or 410-543-6161.



### Get Social With Us

Missing the Salisbury University campus? Check out a video tour on our YouTube channel: [www.youtube.com/salisburyuniversity](http://www.youtube.com/salisburyuniversity). View our playlists to learn more about SU, including spotlights on each of our academic programs and other areas of campus life. You can even take a virtual stroll through the Arboretum: [www.salisbury.edu/arboretum](http://www.salisbury.edu/arboretum). Be sure to follow SU on Facebook, Twitter and Instagram.

### Go Gulls!

Though all fall sports have been suspended, you can still stay up on the latest news and connect with other Gull enthusiasts. Fans can follow the SU Sea Gulls on Facebook, Twitter and Instagram @suseagulls.

On the Cover: *Storytelling with Purpose: Documentary Quilts of Dr. Joan M. E. Gaither* • p. 3

# SU Art Galleries

Exhibits and events are available virtually and at SU Art Galleries | Downtown.

SU Art Galleries | Downtown can accept visitors by appointment. Visitors must pass an on-site screening for COVID-19 symptoms, and adhere to face mask and social distancing guidelines (see page 2).

For virtual exhibit and event registration and to schedule an appointment, visit: [www.suartgalleries.org](http://www.suartgalleries.org)

## HERE NOT HERE Exhibit Through October 17

Maryland's Eastern Shore has many beautiful vistas of sandy beaches and bucolic farm land, but it also is filled with suburban sprawl, strip malls and chicken houses. The art depicting our area often captures our picturesque beaches, birds, barns and boats, but rarely do we see images of the forgotten and overlooked spaces that are equally a part of this place. This exhibit called on artists to capture, explore and depict those unscrubbed and often unseen places. Eighteen artists from the region were selected with work in a wide range of media.



## Eve Hennesa Performance Wednesday, September 23 6 p.m.

## Eve Hennesa Artist Talk Thursday, September 24 5:30 p.m.

In connection with the **HERE NOT HERE** exhibition, artist Hennesa presents a site-specific performance and the following day an artist talk, both of which can be viewed live virtually.



## Art That Connects Us September 1-December 18

SU's most recent art alumni return to show their work. These artists' and designers' senior exhibitions were canceled due to COVID-19, so the SU Art Galleries is excited to share their work in the Downtown gallery for the first time.

## Senior Exhibition: Fine Art & Graphic Design November 9-December 4

SU's biannual Senior Exhibitions continue this fall, with one big show including both fine arts and graphic design students.

# Ward Museum of Wildfowl Art

The Ward Museum is open to the public Wednesday-Sunday, 11 a.m.-4 p.m. There are special hours for seniors and vulnerable populations 9-11 a.m. Wednesday-Friday.

All visitors are required to:

- Wear masks covering their mouths and noses while inside. Masks are required outside on the grounds when social distancing is not possible.
- Stop at the health screening station at the front entrance of the Museum before entering the galleries, Treetops Gifts or other areas inside the Museum.
- Maintain a distance of at least 6 feet from others.

For Museum details and admission costs visit: [www.wardmuseum.org](http://www.wardmuseum.org)

## Nature in The Abstract: The Art of Eileen Olson Through February 14, 2021 Welcome Gallery

Become immersed in the vibrancy and power of nature, as interpreted through the work of Delaware-based fine artist Olson. The exhibit features the unique abstract expressionist style Olson is known for, and it includes brand new works debuting at the Museum, which explore the dynamic natural world around us.



## Storytelling with Purpose: Documentary Quilts of Dr. Joan M. E. Gaither

November 6-May 2021 • LaMay Gallery

From emancipation in Maryland, to life as a young woman in the 1960s, to Black watermen of the Chesapeake – Gaither's story quilts tell powerful biographical stories of her life, the lives of those around her and the lives of those who came before her. An artist, educator and 2017 Maryland Heritage Award winner, Gaither is a master at interpreting autobiographical and community stories through multimedia quilts – sometimes on her own and often with the assistance and vision of whole communities. View a made-for-exhibit Eastern Shore quilt created with the participation of regional communities engaged in workshops leading up to the show.

# Institute for Public Affairs and Civic Engagement (PACE)

For more information on PACE events: [www.salisbury.edu/pace](http://www.salisbury.edu/pace) • 410-677-5054



## IDIS 205: Democracy Across the Disciplines Series Politics & Elections

**Mondays • 6-7:15 p.m.**

More information and forms mentioned below are available at: [bit.ly/IDIS205](http://bit.ly/IDIS205)

There are several ways to participate virtually:

Community Members (2 options):

- Attend live-streamed, virtual sessions for free by emailing [PACE@salisbury.edu](mailto:PACE@salisbury.edu) with your full name and email address to gain access.
- Take for credit as a non-degree seeking student. Be sure to list: IDIS 205: Democracy Across the Disciplines

Teachers: CPD credit available (Contact your supervisor to learn more)

High School Students (to take for credit, you must complete each of the following):

- Form A: Non-Degree Registration - Be sure to list: IDIS 205: Democracy Across the Disciplines
- Form B: High School Students Application for Concurrent Enrollment
- Form C: Dual Enrollment Certification Form

- **August 31:** Elections & Voting from an Interdisciplinary Viewpoint: An Introduction - Catherine Jackson
- **September 7** (recorded lecture): The Power & Potential of the Youth Vote in National Elections - Adam Hoffman
- **September 14:** What Are Elections For? - Eric Rittinger
- **September 21:** Swimming in the Press Pool: The Journalist's Role in the Election Process - David Burns
- **September 28:** The Mathematics of Democracy - Alexander Halperin

- **October 5:** United Nations: The Right to Political Participation in International Law and Post-Conflict Elections - Brittany Foutz
- **October 12:** Polling: A Necessary Evil - Robert Barber
- **October 19:** Economics of the 2020 U.S. Presidential Election - Leonard Arvi
- **October 26:** Rhetorical Realness & Electability: Exploring Perceptions of Political Authenticity - Shannon O'Sullivan
- **November 2:** Election Day 2020: Reflections on the Campaigns & Predictions for Tomorrow - Political Science Department Faculty Panel



- **November 9:** The 2020 Presidential Election: Winners & Losers & What It All Means - Political Science Department Faculty Panel
- **November 16:** Hollywood on the Campaign Trail - Jim Burton
- **November 23:** The Historic Role of Education in National Elections & Politics - Douglas DeWitt
- **November 30:** Promoting Voter Engagement as a Social Work Intervention - Alessia Owens-King
- **December 7:** Elections and Voting from an Interdisciplinary Viewpoint: Integrating Perspectives - Catherine Jackson

# Fulton Faculty Colloquia

All colloquia are 3:30-5 p.m.  
For more information call 410-543-6450.

Register to receive live link:  
<https://bit.ly/FultonColloquia>

## The Rise of Political Ghosts: Counter-Protests of Ultra-Rights in South Korea

**Tuesday, September 1**

Featuring Taehyun Nam, Political Science. Part of the One Maryland One Book event series.

## Humanities Pedagogy

**Tuesday, October 6**

Featuring Fulton Remote Teaching Specialists Adam Woodis, Modern Languages and Intercultural Studies; Yujia Song, Philosophy; Paul Scovell, Communication; Tim Robinson, History; and Lilia Dobos, English.

## Social Science Pedagogy

**Tuesday, November 3**

Featuring Fulton Remote Teaching Specialists Sarah Surak, Political Science/Environmental Studies; Shane Hall, Environmental Studies; Echo Leaver, Psychology; Brittany Foutz, Conflict Analysis and Dispute Resolution; and Ryan Sporer, Sociology.

## Arts Pedagogy

**Tuesday, December 1**

Fulton Remote Teaching Specialists Eric Snee, Art; Louise Anderson, Music, Theatre and Dance; Michael Desper, Music, Theatre and Dance; Jennifer Cox, Communication; and Catherine Jackson, Interdisciplinary Studies.



## Constitution Day Lecture First Amendment & the Press

**Thursday, September 17 • 5:30 p.m.**

Register to receive live link: [bit.ly/PACECOMMFIRST](http://bit.ly/PACECOMMFIRST)

Colin Campbell is a lecturer of media, journalism and film at Howard University.

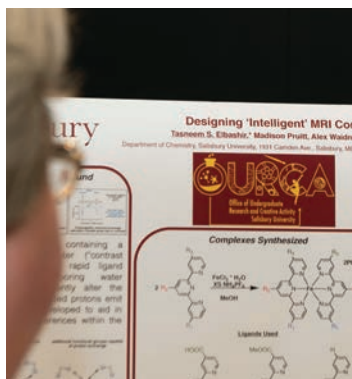
Sponsored by PACE, the Fulton School of Liberal Arts and the Communication Department.

## Summer Student Research Showcase

**Thursday, September 3  
3:30-5 p.m.**

For event and registration details visit: [www.salisbury.edu/student-summer-research](http://www.salisbury.edu/student-summer-research)

The Office of Undergraduate Research and Creative Activity (OURCA) welcomes students from across academic disciplines to present their research and creative work completed over the summer. Join them virtually to learn about the research and creative activities being completed on campus and celebrate the work of these students.



Join this group of professional women from SU and the greater Salisbury community who meet monthly for networking and professional development.

**First Fridays • 8-9 a.m.**

To register visit: [www.salisbury.edu/discover-su/community-outreach/peer2peer.aspx](http://www.salisbury.edu/discover-su/community-outreach/peer2peer.aspx) or email: [Peer2Peer@salisbury.edu](mailto:Peer2Peer@salisbury.edu)

## Racial Literacy September 4

With Dionne Rosser-Mims, dean and professor of education at Troy University, Alabama.

## When Impact Meets Passion October 2

With Sara Lowery, professional speaker and assistant director of fraternity and sorority leadership and learning at the University of Delaware.

## Graceful Self-Promotion November 6

With Page S. Morahan and Zareen Zaidi. Morahan is co-director of Drexel University's Hedwig van Ameringen Executive Leadership in Academic Medicine Program for Women and co-director of the Foundation for Advancement of International Medical Education and Research Institutes. Zaidi is professor of medicine at University of Florida College of Medicine.

## Everyone Can Be a Philanthropist December 4

With Erica Joseph, president of the Community Foundation of the Eastern Shore.

## English Department Creative Writing Program Student Showcase

**PAC-14 • Dates and times to be determined**

For more information contact the English Department: 410-543-6445.

During the fall semester, PAC 14 presents an hour-long show featuring readings by several SU student writers and moderated by John Nieves, head of SU's Creative Writing Program.

## Creative Writing Virtual Reading Series

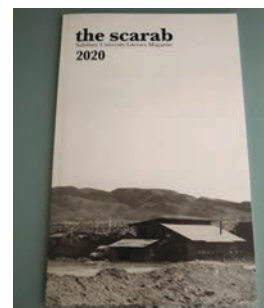
**All readings are at 8 p.m.**

For more information contact the English Department: 410-543-6445.

Visit [www.salisbury.edu/events](http://www.salisbury.edu/events) as the date approaches for details to register for the Zoom events.

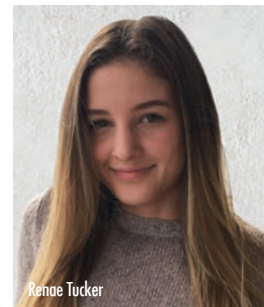
### ■ Wednesday, September 9: Scarab Celebration

Students read selections from their work in the 2020 edition of the Scarab, SU's in-house literary journal.



### ■ Wednesday, September 23: Renaë Tucker

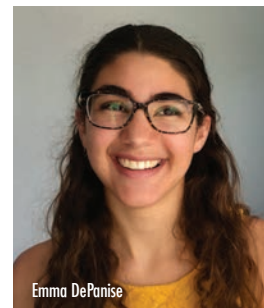
Tucker is an M.F.A. candidate in creative nonfiction at Florida Atlantic University where she teaches and works on *Swamp Ape Review*. Her work can be found in *Permafrost Magazine*, *Arkana* and *Red Earth Review*.



Renaë Tucker

### ■ Wednesday, October 14: Emma DePanise

DePanise's poems are forthcoming or have appeared recently in journals such as *River Styx*, *The Minnesota Review*, *The National Poetry Review*, *Passages North*, *Quarterly West* and elsewhere. A 2018 graduate of SU, she is a winner of a 2019 Association of Writers and Writing Programs (AWP) Intro Journals Award and the 2018 winner of the Pablo Neruda Prize for Poetry. She is an M.F.A. candidate in poetry and teaching assistant at Purdue University, a poetry editor for *Sycamore Review*, and a co-editor of *The Shore Poetry*.



Emma DePanise

### ■ Wednesday, November 4: Jordan Durham

Durham's poems have appeared or are forthcoming in *Blackbird*, *Cimarron Review*, *Quarterly West* and *Indiana Review*, among others. She won the 2019 *Construction Magazine* Poetry Prize and has been a finalist for the *Grist Pro-Forma* Poetry Prize, the *Arcadia* Editors' Poetry Prize and a National Parks Artists Fellowship. She lives in Columbia, MO, where she works at the University of Missouri and edits for *Narrative Magazine*.



Jordan Durham

# University System of Maryland United Benefit Show & Concert



**Saturday, September 12**

For more information contact the Center for Student Involvement and Leadership: 410-543-6125. Visit [www.salisbury.edu/events](http://www.salisbury.edu/events) as the date approaches for event details.

Staff from student activities offices across Maryland present this virtual benefit to raise money through sharing stories, student performances and a virtual concert. When COVID-19 hit Maryland, many students faced financial hardships, and proceeds will go to help those in need.

## Center for Healthy Communities



SU's Center for Healthy Communities benefits the local community through workforce development grants, professional continuing education opportunities, and partner engagement areas via community service grants and community-based learning.

The following professional development opportunities are virtual; to register or for more information, email: [HealthyCommunities@salisbury.edu](mailto:HealthyCommunities@salisbury.edu)

### Justice-Informed Ethics

**Friday, September 18 • 9 a.m. • Cost: \$40**

Justice is a core value of the social work profession, a virtue associated with professionalism, a central element of practice theorizing, and the primary ethical principle for meeting ethical challenges.

### Ethics & Family Engagement

**Monday, September 28 • 1-4 p.m. • Cost: \$40**

In this training, delve into the family practice and the ethical issues therein. Review situations and roles in which the social worker becomes involved in family practice and the ethical concerns that frequently arise.

### 10th Annual Eastern Shore School Mental Health Conference

**November 19 & 20 • 9 a.m.-12:30 p.m. • Cost: \$60**

The ESSMHC focuses on post-traumatic growth for 2020.

## Research Day

**Friday, September 25**

For information call 410-677-0052. Visit [www.salisbury.edu/events](http://www.salisbury.edu/events) as the date approaches for event and registration details.

This annual event spotlights the innovative work SU's faculty are currently exploring.

## Music, Theatre and Dance Department

For the fall, all performances will be presented online, either live-streamed or filmed for viewing.

For more information and to register to view a performance, visit: [www.salisbury.edu/performingarts](http://www.salisbury.edu/performingarts) • 410-543-6228

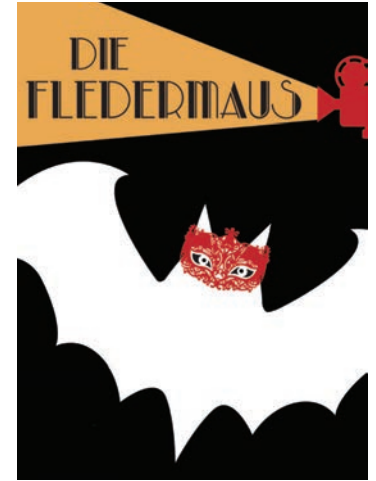
**Olivia Davidson & Emely Martin Voice Recital**  
**Saturday, October 3**  
**6 p.m.**



**SU Theatre Presents Everybody**

**October 15-18\***  
**7:30 p.m. & \*2 p.m.**

Branden Jacobs-Jenkins' play was a finalist for the 2018 Pulitzer Prize for Drama. This live-streamed modern riff on the 15th-century morality play *Everyman* follows *Everybody* (chosen from among the cast by lottery at each performance) as they journey through life's greatest mystery – the meaning of living.



**Opera Theatre Presents Die Fledermaus**

**Late Fall Streaming Date TBA**

Enjoy SU's filmed adaption of *Die Fledermaus* (*The Bat*) by Johann Strauss II. With events taking place at a costume ball, this comedic operetta's characters wear masks of a different sort than required in society today.

**Jessica Johnson & Katherine Schell Voice Recital**

**Saturday, October 31**  
**6 p.m.**



**Thomas Snyder & Miranda Wood Voice Recital**

**Sunday, November 1**  
**6 p.m.**

**Piano & Strings Recital**

**Tuesday, November 3**  
**Noon**

# Music, Theatre and Dance Department *continued*

## Allegheny Trio Ensemble

Wednesday, November 4 • 7 p.m.

Ernest Barretta, piano; Sachiko Murasugi, violin; and Jeffrey Schoyen, cello, present a concert of piano and string chamber music. The performance also features a showcase of talented string students.



## SU Theatre Presents The Baltimore Waltz

November 12-15\*  
7:30 p.m. & \*2 p.m.

Winner of the Obie Award, Paula Vogel's giddy, humorous fantasy follows the love and adventures of a brother and sister, one of whom has a fatal disease – ATD, Acquired Toilet Disease.

## Anthony Constantine Viola Recital

Friday, November 20  
7 p.m.



## Josh Dennis & Sara Miller Voice Recital

Saturday, November 21  
6 p.m.



## SU Dance Company Fall Student Dance Showcase

November 6-8\* • 7:30 p.m. & \*2 p.m.

The concert is a delightful mix of live-streamed and pre-recorded dances, all performed by members of the talented SU Dance Company. Join them for their premiere virtual performance.



Salisbury Pops  
Tuesday, November 17  
7:30 p.m.

## World Drum Experience

Wednesday, November 11  
7:30 p.m.

The ensemble performs under the direction of Ted Nichols. Inspiration for the performance comes from Babatunde Olatunji: "I am the drum, you are the drum, and we are the drum. Because the whole world revolves in rhythm, and rhythm is the soul of life, for everything that we do in life is in rhythm."

## Percussion Ensemble

Thursday, November 12  
7:30 p.m.

The ensemble, under the direction of Eric Shuster, presents *The City Wears a Slouch Hat*, a radio play by Kenneth Patchen with incidental music by John Cage.



Jazz Ensemble  
Thursday, November 19  
7:30 p.m.

## Anna Avrick, Piano, & Dylan Williams, Guitar, Recital

Sunday, November 22  
6 p.m.







## Sea Gull Century

**October 3-10 (virtual ride)**

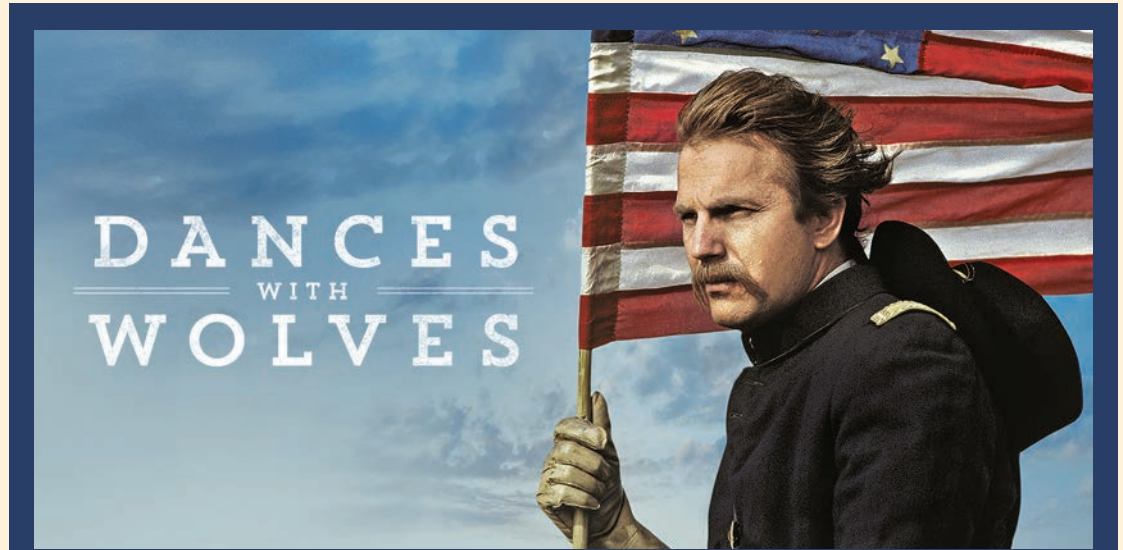
**Cost: \$35 per cyclist**

(reduced from the normal fee of \$75 to \$100); includes a 2020 Sea Gull Century T-shirt and exclusive gift package

For more information and to register: [seagullcentury.org](http://seagullcentury.org)

SU's 32nd Sea Gull Century goes virtual for 2020. Cyclists have the opportunity to create routes in their own local areas, with the option of sharing photos with fellow cyclists via social media.

Participants are encouraged to complete their rides during the designated week. Riders may choose between a 100-mile (traditional century) or 100-kilometer (63-mile metric century) route. Because of the virtual format, cyclists may choose to break up their rides into sections and, if desired, post about their daily progress. As in previous years, proceeds from the event provide scholarship funding and community support.



## Native American Heritage Month

### Dances with Wolves at 30: A Roundtable Discussion

**Tuesday, November 3 • 7 p.m.**

To receive link, register at: [www.salisbury.edu/dances-with-wolves-discussion](http://www.salisbury.edu/dances-with-wolves-discussion)

Community members are encouraged to watch the movie on their own prior to the discussion. The movie is available for free screening to members of the SU campus through the University's Library Swank database (link will be sent upon registration).

For more information contact Céline Carayon: [cxcarayon@salisbury.edu](mailto:cxcarayon@salisbury.edu)

Released in theatres in 1990, *Dances with Wolves* (directed by Kevin Costner) was an immediate box office success, hailed by critics for redefining the Western genre. In this epic, set in the rugged landscape of the Great Plains, Union Army Lieutenant John Dunbar settles in a remote frontier outpost, soon befriendng wolves and his Lakota Sioux neighbors and growing at odds with the military. How has the movie withstood the test of time? In 2020, are people feeling as positive about the representation of American Indians in the film as they did back then? What is the legacy of the film in terms of other Western epics and Native independent cinema? Roundtable participants include Ryan Conrath, SU English Department, film studies; Andy Fisher, The College of William and Mary History Department; and Céline Carayon, SU History Department.

Sponsored by the Fulton Public Humanities Program.

## Alumni Homecoming Virtual Events

**October 19-25**

Visit the Homecoming website for details as they develop:

[www.salisbury.edu/homecoming](http://www.salisbury.edu/homecoming)

There will be no on-campus, in-person alumni Homecoming events this fall, but the Alumni Office is planning virtual engagement opportunities. Organizers hope that alumni will be able to gather on campus in person in spring 2021.



## Salisbury Symphony Orchestra

### Holiday Reinventions Chamber Concert

**Saturday, December 12 • 7:30 p.m.**

Visit [www.salisbury.edu/events](http://www.salisbury.edu/events) as the date approaches for event and registration details.

For more information: [sso@salisbury.edu](mailto:sso@salisbury.edu)  
[www.SalisburySymphonyOrchestra.org](http://www.SalisburySymphonyOrchestra.org)

Featuring works by composers reflecting on the work of others and surprise appearances by SSO friends.



# Nabb Research Center for Delmarva History and Culture

Though its facilities are closed to the public, the Nabb Center still has much to share with the community virtually and will continue to respond to inquiries and assist researchers. Follow Nabb on Facebook and Instagram to learn about new activities and collections.

[www.salisbury.edu/libraries/nabb](http://www.salisbury.edu/libraries/nabb) • [nabbcenter@salisbury.edu](mailto:nabbcenter@salisbury.edu)

## ■ Online Exhibits

Online exhibits can be accessed at:

[libapps.salisbury.edu/nabb-online/current-exhibits](http://libapps.salisbury.edu/nabb-online/current-exhibits)



## Friends & Rivals: Baseball on Delmarva

Throughout the 20th century, in the ballparks and backyards of small towns on the Eastern Shore of Maryland, Delaware and Virginia, the most popular summer activity was attending or playing baseball. This exhibition looks at the history and heritage of baseball on the Delmarva Peninsula and the role it played in the local communities that embraced the national pastime.

## Not Just a Pretty Face

Curated by Emma Griebner, this exhibit is the culmination of her museum internship at the Nabb Center. The concept was inspired by vintage beauty advertisements and magazines in the Nabb collections and an interest in finding out more about the role women played in the beauty industry.



## Delmarva: People, Place & Time

This online version of our permanent exhibit highlights various aspects of Delmarva history and culture, including Native Americans and early settlers, slavery and the Underground Railroad, a glimpse of life in an early 19th-century homestead, and the importance and impact that working the land and the water has had on the region.



## Identidad Cultural en Colombia Caribeña

August 31-December 18  
Guerrieri Academic Commons, 1st Floor Lobby, & Online

The exhibit is part of a recent exchange between the Institución Universitaria ITSA, in Barranquilla, Colombia, and SU's Dudley-Eshbach Center for International Education. It features ITSA student artwork and photography that explores themes of cultural identity and pays tribute to Colombian Caribbean culture. Some of the work may seem familiar, as the student artists re-imagined well-known works of art inspired by Afro and indigenous Colombian beauty and aesthetics.

## ■ Internet Archive

The internet archive provides a free platform to preserve and make digital content accessible online, opening the door to Delmarva's rich history to the world. This has allowed the Nabb Center to share hundreds of previously inaccessible sources, including SU and Wicomico County public high school yearbooks, transcribed sources, audio recordings, digitized manuscripts, and more. [archive.org/details/salisbury\\_universitylibrariesnabb\\_researchcenter](http://archive.org/details/salisbury_universitylibrariesnabb_researchcenter)

Explore archival collections through the finding aid portal: [libapps.salisbury.edu/nabb-archives](http://libapps.salisbury.edu/nabb-archives)



## ■ Flickr Collections

Flickr is the home for the Nabb Center's online photograph collections and now includes nearly 10,000 images in 17 albums. Highlights include a treasure trove of 3,500 local photos from Walter Thurston, over 1,200 University Archive photos, hundreds of fire and disaster-related photos from Fred Grier, postcards from the John Jacob collection, the oldest known photo of downtown Salisbury, and several scrapbooks documenting various local histories. View the collections at: [flickr.com/nabbresearchcenter](http://flickr.com/nabbresearchcenter)

## ■ Archiving Projects Call for Collections

### COVID-19 Collection

The University Archives is collecting materials documenting personal experiences during the COVID-19 pandemic from SU students, faculty, staff and alumni. Donations can include, but are not limited to, digital or handwritten journal entries, photographs, vlogs, or artwork. For more information or to fill out a submission form and donate your materials, go to: [www.salisbury.edu/libraries/nabb/collections/covid19.aspx](http://www.salisbury.edu/libraries/nabb/collections/covid19.aspx)

Want to participate but don't know where to start? Check out the journal topics list and downloadable surveys on the website.

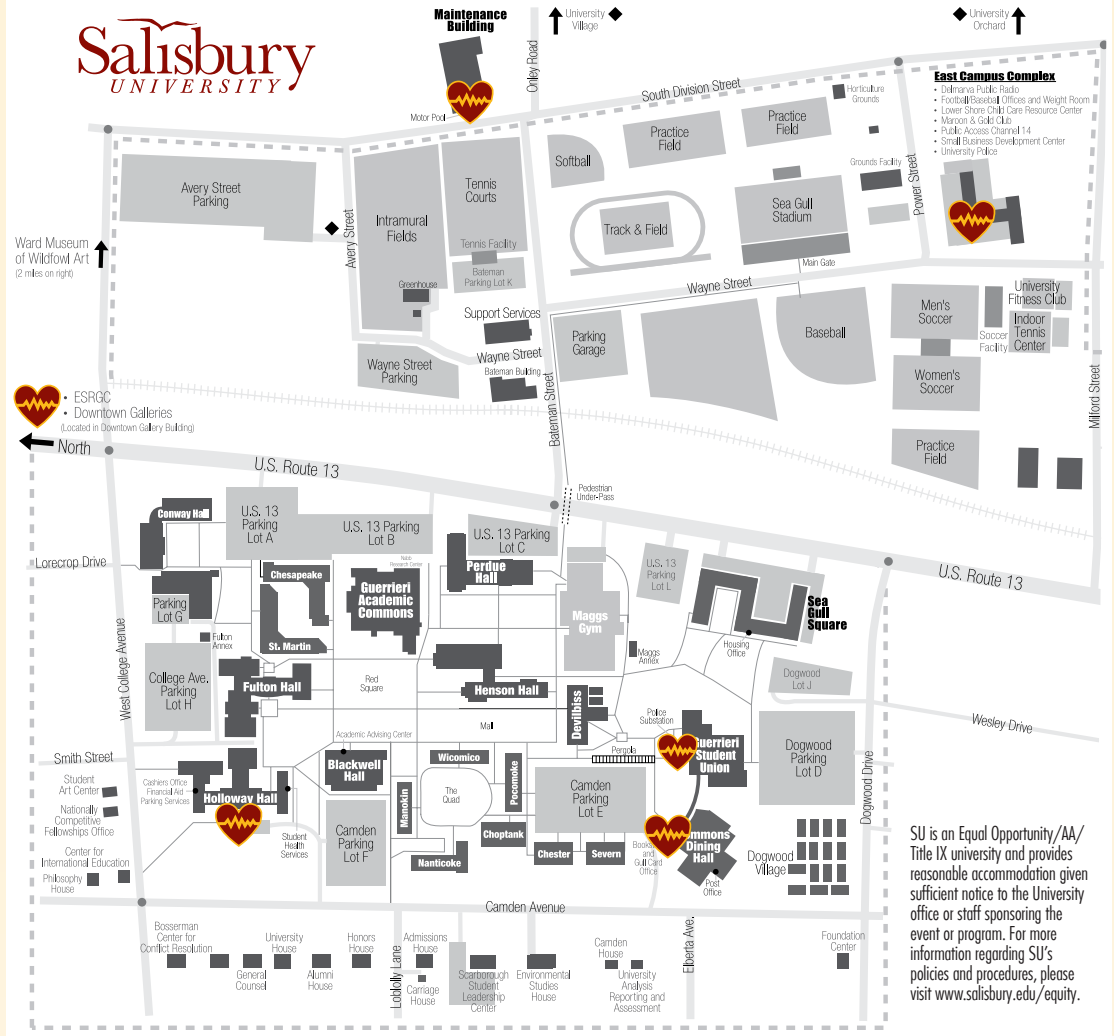
### Black Lives Matter Delmarva

The Nabb Center is collecting digital content to document Delmarva's activism and response to racial injustices in order to make sure this movement and the voices of the people are remembered. If you've documented recent protests or participated in other ways through social media, photos or writing, the Nabb Center staff want to ensure that it is preserved for future generations. Please contact Ian Post at [impost@salisbury.edu](mailto:impost@salisbury.edu).



MWD Photos,  
Courtesy Nabb  
Research Center

## COVID-19 SCREENING LOCATIONS



SU is an Equal Opportunity/AA/ Title IX university and provides reasonable accommodation given sufficient notice to the University office or staff sponsoring the event or program. For more information regarding SU's policies and procedures, please visit [www.salisbury.edu/equity](http://www.salisbury.edu/equity).

### SELF-SCREENING

- Available only to the campus community
  - Visitors must use the on-site locations listed below for screening and to receive a visitors badge

### ON-SITE SCREENING

- ♥ POLICE DISPATCH - EAST CAMPUS  
Any Time
- ♥ HOLLOWAY HALL ENTRANCE  
8 a.m. - 4:30 p.m.
- ♥ GUERRIERI STUDENT UNION INFO DESK  
8 a.m. - 4:30 p.m.
- ♥ MAINTENANCE BUILDING ROOM 111  
8 a.m. - 3:30 p.m.
- ♥ BOOKSTORE - COMMONS LOWER LEVEL  
8:30 a.m. - 4:30 p.m.
- ♥ SU ART GALLERIES | DOWNTOWN  
By Appointment Only: [www.suartgalleries.org/visit](http://www.suartgalleries.org/visit)

### BE PREPARED

- Have your ID ready
  - Campus members: SU ID
  - Visitors: Photo ID
- Wear your face covering
- Your temperature will be screened
- Answer a list of screening questions
  - Screening questions can be found here: [www.salisbury.edu/COVIDquestions](http://www.salisbury.edu/COVIDquestions)
  - If you answer "YES" to any questions, you will not be allowed on campus.

Would you like to support events like these, or other priorities including scholarships?

Become a part of The Campaign for Salisbury University as we fund the resources needed for the extraordinary people — students, faculty, staff and others — who are woven into the fabric of our campus. Together, We Are SU.

**WE ARE SU**  
THE CAMPAIGN FOR SALISBURY UNIVERSITY  
[campaign.salisbury.edu](http://campaign.salisbury.edu)

Events are subject to change;  
for updates and corrections, visit:  
[www.salisbury.edu/events](http://www.salisbury.edu/events)

# Art That Connects Us

September 1-December 18

Painting by Adde Gross

See page 3 for details

